

PANEL MP (Elec / Mech Rm) SECTION 1 120/208 3PH 4W 400 AMP BUS - MLO/MSB 42K AIC NEMA TYPE 1 (SURFACE)															
CKT #	LOAD DESCRIPTION	AF	AT	P	CA	DF	DA	CKT #	LOAD DESCRIPTION	AF	AT	P	CA	DF	DA
1	LIGHTS RM's 100, 101, 102, 103 & 104	20	20	1		1.00	0	2	LIGHTS RM's 112, 113, 114 & 115	20	20	1		1.00	0
3	OUTLETS RM 105	20	20	1	3	0.50	2	4	LIGHTS RM's 116 & 120	20	20	1		1.00	0
5	LIGHTS RM's 105 & 106	20	20	1		1.00	0	6	LIGHTS LOBBY	20	20	1		1.00	0
7	LIGHTS RM's 108, 119 & 121	20	20	1		1.00	0	8	LIGHTS RM's 117 & 122	20	20	1		1.00	0
9	OUTLETS RM 108	20	20	1	3	0.50	2	10	LIGHTS RM 200	20	20	1		1.00	0
11	LIGHTS RM's 109, 110 & 111	20	20	1		1.00	0	12	LIGHTS RM's 201, 202, 203, 204 & 205	20	20	1		1.00	0
13	DOOR PUSH BUTTONS RM 100	20	20	1		1.00	0	14	OUTLETS RM's 107 & 108	20	20	1	11	1.00	11
15	F A C P	20	20	1	4	1.00	4	16	COFFEE MAKER RM 108	20	20	1	15	1.00	15
17	OUTLETS RM's 100, 101, 102, 103 & 104	20	20	1	11	0.50	5	18	COFFEE MAKER RM 108	20	20	1	15	1.00	15
19	OUTLETS RM 105	20	20	1	12	0.50	6	20	OUTLETS RM's 119 & 121	20	20	1	8	0.50	4
21	OUTLET RM 105 COUNTER TOP	20	20	1	16	0.50	8	22	KIOSK RM 121	20	20	1	8	0.50	4
23	OUTLET RM 105 COUNTER TOP	20	20	1	16	0.50	8	24	OUTLETS TELLER POD RM 119	20	20	1	12	0.50	6
25	REFRIGERATOR RM 105	20	20	1	14	0.50	7	26	OUTLETS TELLER POD RM 119	20	20	1	12	0.50	6
27	OUTLETS RM 109	20	20	1	9	0.50	5	28	OUTLETS RM's 118 & 119	20	20	1	9	0.50	5
29	OUTLETS RM's 110 & 111	20	20	1	15	0.50	8	30	OUTLETS RM 116	20	20	1	5	0.50	2
31	OUTLETS RM's 112 & 113	20	20	1	9	0.50	5	32	OUTLETS RM 116	20	20	1	5	0.50	2
33	OUTLETS RM's 114 & 115	20	20	1	9	0.50	5	34	DEAL DRAWER	30	30	1	4	1.00	4
35	OUTLETS TELLER POD RM 120	20	20	1	12	0.50	6	36	VACUUM CONVEYOR	30	30	1	20	1.00	20
37	OUTLETS TELLER POD RM 120	20	20	1	12	0.50	6	38	OUTLET AT DRIVE THRU (VACUUM)	20	20	1	3	0.50	2
39	WIRE MOLD RM 116 (DRIVE THRU)	20	20	1	10	0.50	5	40	HEAT TRACE DRIVE THRU	30	30	1		1.00	0
41	VACUUM BLOWER	30	30	1			0	42	HEAT TRACE DRIVE THRU	30	30	1		1.00	0

ELECTRICAL / MECHANICAL ROOM

AF - Amp Frame
 AT - Amp Trip
 P - Poles
 A - Amperes
 CA - Connected Amperes
 DF - Demand Factor (1 - 1)
 DA - Demand Amperes
 MLO - Main Lug Only
 MCB - Main Circuit Breaker
 SEE SWITCHBOARD DATA FOR ELECTRONIC BREAKER SETTINGS

Section 1
Tot Amps/PH - Connected Load 93.17
Demand Factor 62%
Total Amps/PH - Demand 58.00
Connected KVA 33.53
Demand KVA 20.87
Min. Panel Size (Demand x 1.25) - Amps 72.50
Panel Size (Demand x 1.56) - Amperes 90.48

Section 2
Tot Amps/PH - Connected Load 277.40
Demand Factor 76%
Total Amps/PH - Demand 209.82
Connected KVA 99.82
Demand KVA 75.50
Min. Panel Size (Demand x 1.25) - Amps 262.27
Panel Size (Demand x 1.56) - Amperes 327.31

PANEL MP (Elec / Mech Rm) SECTION 2 120/208 3PH 4W 400 AMP BUS - MLO/MSB 42K AIC NEMA TYPE 1 (SURFACE)																
CKT #	LOAD DESCRIPTION	AF	AT	P	CA	DF	DA	CKT #	LOAD DESCRIPTION	AF	AT	P	CA	DF	DA	
43	WIRE MOLD RM 117 (WORK ROOM)	20	20	1	10	0.50	5	44	OUTLETS RM 108	20	20	1	6	0.50	3	
45	WIRE MOLD RM 117 (WORK ROOM)	20	20	1	10	0.50	5	46	OUTLETS RM 119	20	20	1	8	0.50	4	
47	WIRE MOLD RM 117 (WORK ROOM)	20	20	1	10	0.50	5	48	OUTLETS RM 108, 118 & 119	20	20	1	8	0.50	4	
49	WIRE MOLD RM 117 (WORK ROOM)	20	20	1	10	0.50	5	50	OUTLET RM 119 TELLER POD	20	20	1	2	0.50	1	
51	WIRE MOLD RM 117 (WORK ROOM)	20	20	1	10	0.50	5	52	OUTLET RM 120 TELLER POD	20	20	1	2	0.50	1	
53	NIGHT DEPOSIT	20	20	1	4	1.00	4	54	OUTLETS RM's 200, 201 & 205	20	20	1	9	0.50	5	
55	A T M RM 117	30	30	1		1.00	0	56	OUTLETS RM 204	20	20	1	6	0.50	3	
57	OUTLETS RM 122	20	20	1	6	0.50	3	58	REFRIGERATOR RM 205	20	20	1	14	0.50	7	
59	OUTLET IT RM	20	20	1	6	0.50	3	60	OUTLET RM 205 COUNTER TOP	20	20	1	16	0.50	8	
61	OUTLET IT RM	20	20	1	6	0.50	3	62	OUTLET RM 205 COUNTER TOP	20	20	1	16	0.50	8	
63	OUTLET IT RM	20	20	1	6	0.50	3	64	OUTLET RM 205 COUNTER TOP	20	20	1	16	0.50	8	
65	OUTLET IT RM	20	20	1	6	0.50	3	66	OUTLETS RM 202	20	20	1	5	0.50	2	
67	OUTLET IT RM	20	20	1	6	0.50	3	68	OUTLET AT TBB TOP (QUAD)	20	20	1	2	0.50	1	
69	DOOR KEY PADS	20	20	1	3	1.00	3	70	OUTLET AT TBB BOTTOM (QUAD)	20	20	1	2	0.50	1	
71	SPARE	20	20	1			0	72	SPACE						0	
73	SPARE	20	20	1			0	74	SPACE						0	
75	SPARE	20	20	1			0	76	SPACE						0	
77	SPARE	20	20	1			0	78	SPACE						0	
79	SPARE	20	20	1			0	80					117	1.00	117	
81	SPARE	20	20	1			0	82	PANEL "BP" FEEDER			3		117	1.00	117
83	SPARE	20	20	1			0	84					117	1.00	117	

ELECTRICAL / MECHANICAL ROOM

AF - Amp Frame
 AT - Amp Trip
 P - Poles
 A - Amperes
 CA - Connected Amperes
 DF - Demand Factor (1 - 1)
 DA - Demand Amperes
 MLO - Main Lug Only
 MCB - Main Circuit Breaker
 SEE SWITCHBOARD DATA FOR ELECTRONIC BREAKER SETTINGS

Section 2
Tot Amps/PH - Connected Load 184.23
Demand Factor 82%
Total Amps/PH - Demand 151.82
Connected KVA 66.29
Demand KVA 54.63
Min. Panel Size (Demand x 1.25) - Amps 189.77
Panel Size (Demand x 1.56) - Amperes 236.83

PANEL BP (Elec / Mech Rm) 120/208 3PH 4W 200 AMP BUS - MLO/MSB 42K AIC NEMA TYPE 1 (SURFACE)															
CKT #	LOAD DESCRIPTION	AF	AT	P	CA	DF	DA	CKT #	LOAD DESCRIPTION	AF	AT	P	CA	DF	DA
1	POLE MOUNTED SITE LIGHTS	20	20	2	6	1.00	6	2	ALLOWANCE FOR MECHANICAL LOADS. SEE NOTE BELOW	-	-	3	100	1.00	100
3					6	1.00	6	4					100	1.00	100
5	POLE MOUNTED SITE LIGHTS	20	20	2	3	1.00	3	6					100	1.00	100
7					3	1.00	3	8							0
9	BUILDING MOUNTED BANK SIGNS	20	20	1	14	1.00	14	10							0
11	SITE BANK SIGN	20	20	1	6	1.00	6	12							0
13	SITE BANK SIGN	20	20	1	6	1.00	6	14							0
15	SITE BANK SIGN	20	20	1	6	1.00	6	16							0
17	PHOTOCELL / CLOCK	20	20	1	2	1.00	2	18							0
19							0	20							0
21							0	22							0
23							0	24							0
25							0	26							0
27							0	28							0
29							0	30							0
31							0	32							0
33							0	34							0
35							0	36							0
37							0	38							0
39							0	40							0
41							0	42							0

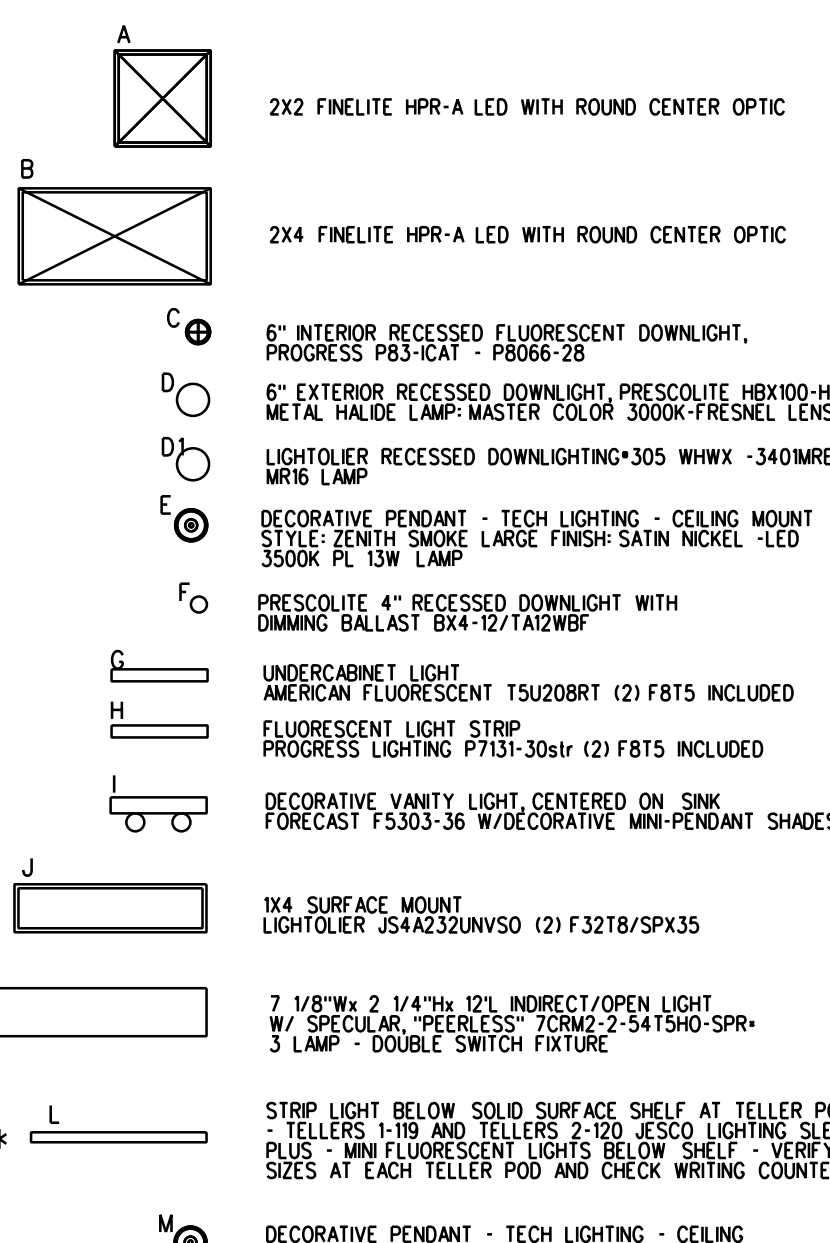
ELECTRICAL / MECHANICAL ROOM

AF - Amp Frame
 AT - Amp Trip
 P - Poles
 A - Amperes
 CA - Connected Amperes
 DF - Demand Factor (1 - 1)
 DA - Demand Amperes
 MLO - Main Lug Only
 MCB - Main Circuit Breaker
 SEE SWITCHBOARD DATA FOR ELECTRONIC BREAKER SETTINGS

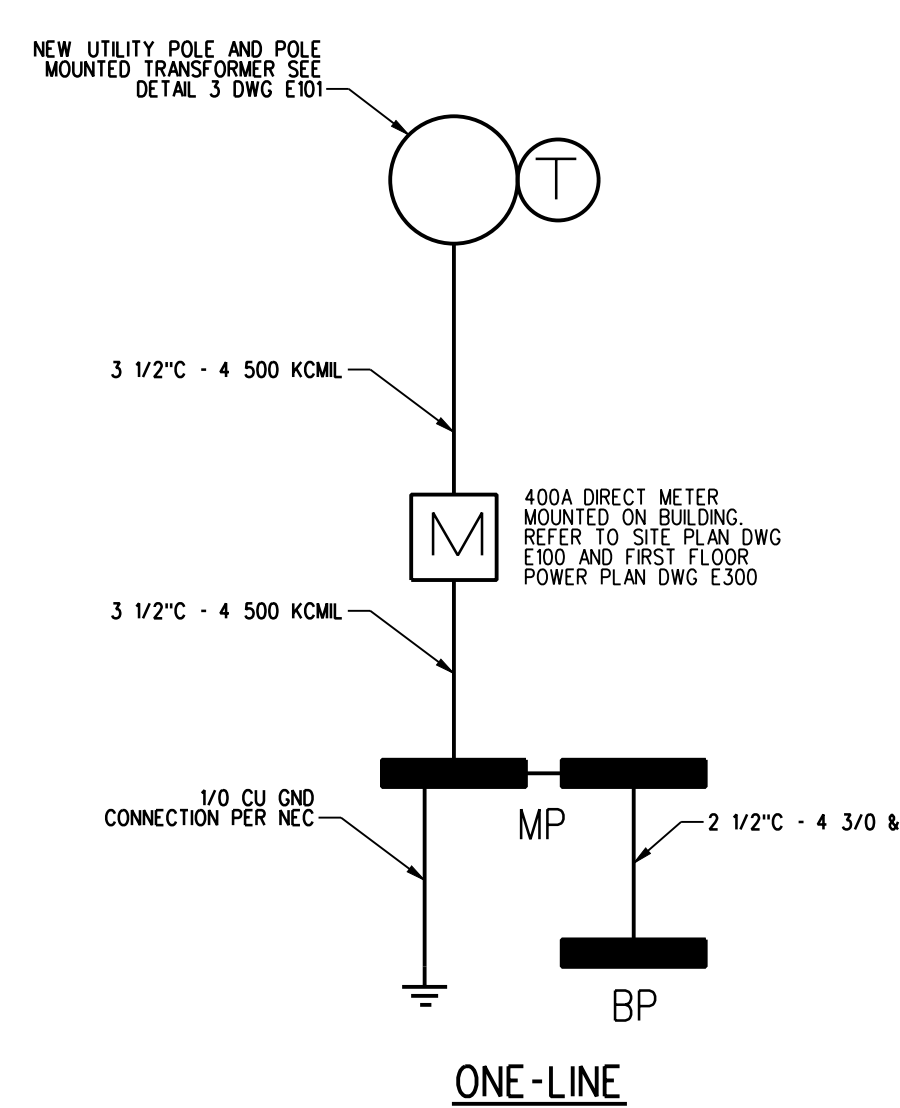
Section 2
Tot Amps/PH - Connected Load 117.07
Demand Factor 100.00%
Total Amps/PH - Demand 117.07
Connected KVA 42.13
Demand KVA 42.13
Min. Panel Size (Demand x 1.25) - Amps 146.33
Panel Size (Demand x 1.56) - Amperes 182.62

NOTE
 CONTRACTOR SHALL SUPPLY BREAKERS FOR MECHANICAL EQUIPMENT PER EQUIPMENT MANUFACTURER RECOMMENDATIONS.

LIGHT FIXTURE SCHEDULE



ALL LIGHTING FIXTURES SHALL BE ENERGY STAR RATED OR HAVE HIGH PERFORMANCE ELECTRONIC BALLAST AND LAMPS TO MEET EFFICIENCY MAINE CRITERIA ALL FLUORESCENT LAMPS 3500K.
 FOR SITE LIGHTING REFER TO DRAWING E100.
 PROVIDE PROGRAM START BALLASTS FOR OCCUPANCY SENSORS AND INSTANT START BALLASTS FOR SWITCHED LIGHTING. MN BF-1.0



ABBREVIATIONS

- A AMP
- AC ALTERNATING CURRENT, ABOVE COUNTER
- ADA AMERICANS WITH DISABILITIES ACT
- AMP FRAME
- AFCI ARC FAULT CIRCUIT INTERRUPTER
- AFB ABOVE FINISHED FLOOR
- AFG ABOVE FINISHED GRADE
- AC AMPERES INTERRUPTING CAPACITY
- AL ALUMINUM
- AT AMP TRIP
- ATC AUTOMATIC TEMPERATURE CONTROL
- ATS AUTOMATIC TRANSFER SWITCH
- AWG AMERICAN WIRE GAUGE
- BLDG BUILDING
- CONDUIT CONDUIT
- CB CIRCUIT BREAKER
- CI CAST IRON
- CKT CIRCUIT
- CL CENTERLINE
- COMP CENTRAL MAINE POWER (ELECTRIC UTILITY)
- CMU CONCRETE MASONRY UNIT
- CT CURRENT TRANSFORMER
- CONC CONCRETE
- CS CARBON STEEL
- CU COPPER
- CH CABINET UNIT HEATER
- EC ELECTRICAL CONTRACTOR
- EXHAUST FAN
- ER EXISTING REMAINS IN PLACE
- EXISTING RELOCATE
- ERM EXISTING REMOVE
- EUH ELECTRIC UNIT HEATER
- EWC ELECTRICAL WATER COOLER
- FACP FIRE ALARM CONTROL PANEL
- FAPS FIRE ALARM PULL STATION
- FIBER REINFORCED PLASTIC
- FV FULL VOLTAGE, NON-REVERSING
- REDUCED VOLTAGE, NON-REVERSING
- DIRCT DIRECT CURRENT
- GFI GROUND FAULT INTERRUPTER
- GROUND
- HI HIGH INTENSITY DISCHARGE
- HDA HAND-OFF-AUTOMATIC
- HP HORSEPOWER
- HPS HIGH PRESSURE SODIUM
- HERTZ
- ICB INSULATED CASE CIRCUIT BREAKER
- JB JUNCTION BOX
- KAC THOUSAND AMP INTERRUPTING CAPACITY
- KCMIL THOUSAND CIRCULAR MIL
- KV THOUSAND VOLTS
- KVA THOUSAND VOLT-AMPS
- KW THOUSAND WATTS (KILOWATT)
- LC LIGHTING CONTACTORS
- LCP LATERAL CONTROL PIT
- LED LIGHT EMITTING DIODE
- LP LIGHTING PANELBOARD
- LTC LIGHTING
- LONG TIME, SHORT TRIP, INSTANTANEOUS, GROUND FAULT CIRCUIT BREAKER TRIP FUNCTIONS AS INDICATED
- MCC MOTOR CONTROL CENTER
- MCCB MOLDED CASE CIRCUIT BREAKER
- MCB MAIN CIRCUIT BREAKER
- MDP MAIN DISTRIBUTION PANEL
- MH MANHOLE
- MLO MAIN LUGS ONLY
- MTS MANUAL TRANSFER SWITCH
- NC NORMALLY CLOSED OF NURSE CALL
- NEC NATIONAL ELECTRICAL CODE
- NFPA NATIONAL FIRE PROTECTION ASSOCIATION
- NL NIGHT LIGHT
- NO NORMALLY OPEN
- NO. NUMBER
- OL OVERLOAD
- P POLE
- PA PUBLIC ADDRESS
- PB PUSH BUTTON
- PF POWER FACTOR
- PH PHASE
- PNL PANEL
- TP1-2 TELE-POWER POLE - POLE AND CIRCUIT NUMBER AS INDICATED
- PSNI PUBLIC SERVICE OF NEW HAMPSHIRE (ELECTRIC UTILITY)
- PT POTENTIAL TRANSFORMER
- PVC POLYVINYL CHLORIDE
- RSC RIGID STEEL CONDUIT
- RTU ROOF TOP UNIT
- SF SUPPLY FAN
- SLD SINGLE LINE DIAGRAM
- MANUAL MOTOR STARTER SWITCH WITH THERMAL OVERLOAD DEVICE, MOUNTED AT UNIT
- SOLID STATE
- SS SWITCHBOARD NUMBER AS DESIGNATED
- TC TIME CLOCK
- TS TRANSFER SWITCH
- T&B TOP AND BOTTOM
- TYP TYPICAL
- UG UNDERGROUND
- V VOLT
- VIA VOLT-AMPERE
- VFD VARIABLE FREQUENCY DRIVE
- W WATT
- W/ WITH
- WP WEATHERPROOF
- XFMR TRANSFORMER
- XP EXPLOSION PROOF
- 3PH THREE PHASE
- 4W FOUR WIRE
- 3W THREE WIRE

SYMBOL LEGEND

- POWER PANEL, 120/208V, 3PH, 4WIRE
- ELECTRIC MOTOR DRIVEN EQUIPMENT, HP SHOWN
- JUNCTION BOX - "H" DENOTES RANGE HOOD, "DS" DENOTES DISPOSAL, "DW" DENOTES DISHWASHER
- SM MANUAL MOTOR STARTER SWITCH WITH THERMAL OVERLOAD DEVICE, MOUNTED AT UNIT
- LIGHTING FIXTURES - CAPITAL LETTERS DENOTE TYPE AS PER LIGHTING FIXTURE SCHEDULE, LOWER CASE LETTERS INDICATE SWITCH CONTROL, DIAGONAL LINE INDICATES NIGHT LIGHT - UNSWITCHED
- DISCONNECT SWITCH - 250 VOLT - SIZE AND NUMBER OF POLES AS INDICATED ON DRAWING, PROVIDED AND INSTALLED BY E.C. - UNLESS OTHERWISE NOTED, PROVIDE FUSES WHERE RECOMMENDED BY MANUFACTURER.
- COMBINATION MOTOR STARTER/ DISCONNECT SWITCH - WITH AUXILIARY CONTACTS AND HAND-OFF-AUTO SWITCH AND RED RUN LIGHT PROVIDED AND INSTALLED BY E.C. - UNLESS OTHERWISE NOTED.
- VARIABLE FREQUENCY DRIVE - PROVIDED BY M.C., INSTALLED AND WIRED BY E.C.
- RACEWAY & WIRING OR MC CABLE RUN CONCEALED IN WALLS/CEILING.
- RACEWAY & WIRING RUN EXPOSED
- RACEWAY & WIRING RUN CONCEALED UNDER FLOOR OR BURIED 30" BELOW FINISH GRADE
- HOME RUN TO PANEL - ARROWS INDICATE QUANTITY OF CIRCUITS - NUMERALS DENOTE CIRCUIT NUMBERS
- SINGLE POLE SWITCH, 120 VOLT, 20 AMP, SPEC. GRADE, GROUNDING TYPE, MOUNT 48" AFF
- 3-3-WAY, 4-4 WAY, P-PILOT LOWER CASE LETTER INDICATES FIXTURE OR CONTROLLED PILOT LIGHT SWITCHES SHALL BE PROVIDED W/ ENGRAVED
- BURNER SAFETY SWITCH - PROVIDE WITH RED PLATE - MOUNTED 72" AFF
- SELF CONTAINED EMERGENCY LIGHTING UNIT, W/2 HEADS DUAL-LITE, 4-22 - 10 WATTS FOR 90 MINUTES, 6V D.C. CVSDI IN CAR WASH AREA
- CSSH0605 AT DOORS (EXTERIOR)
- DUAL-LITE - CVSDI WITH REMOTE EXT. HEADS (2)
- EXIT LIGHT FIXTURE - UNSWITCHED - SEE LIGHTING FIXTURE SCHEDULE
- TEMPERATURE CONTROL PANEL - PROVIDED BY M.C. WIRED BY E.C.
- DUPLEX RECEPTACLE - 20A, 125V SPEC. GRADE GROUNDING TYPE, TAMPER PROOF AND MATCHING PLATE - MOUNT 18" AFF. "R" DENOTES REFRIGERATOR, "D" DENOTES DOUBLE DUPLEX
- DUPLEX RECEPTACLE - 20A, 125V SPEC. GRADE GROUNDING TYPE, TAMPER PROOF AND MATCHING PLATE - MOUNT 18" AFF. BOTTOM RECEPTACLE SWITCHED
- DUPLEX RECEPTACLE - GROUND FAULT OUTLET 20A, 125V, TAMPER PROOF WITH MATCHING PLATE FURNISHED W/ OUTLET, FLUSH MOUNTED 45" AFF EXCEPT AS NOTED
- DUPLEX RECEPTACLE - 15A, 125V SPEC. GRADE GROUNDING TYPE - FLUSH FLOOR MOUNT
- RANGE OUTLET 50 AMP, 250 VOLT, GROUNDING TYPE FLUSH MOUNTED 18" AFF
- DRYER OUTLET 30 AMP, 250 VOLT, GROUNDING TYPE FLUSH MOUNTED 18" AFF
- FIRE ALARM CONTROL PANEL
- PUBLIC ADDRESS
- FIRE ALARM AUDIO/VISUAL, MOUNT 6'-8" AFF - NUMERAL DENOTES CANDELA RATING "MH" DENOTES MINIHORN, NO DESIGNATION EQUOLS A 15cd.
- FIRE ALARM VISUAL STROBE ONLY - FLUSH MOUNT 6'-8" AFF NUMERALS DENOTE CANDELA RATINGS.
- SYSTEM CONNECTED FIXED TEMPERATURE HEAT DETECTOR
- SMOKE DETECTOR, PHOTOELECTRIC TYPE - SYSTEM CONNECTED, "ER" - ELEV. RECALL
- SYSTEM CONNECTED SMOKE DETECTOR, PHOTOELECTRIC TYPE - W/ SOUNDER BASE - "SB" DENOTES SOUNDER BASE.
- DUCT SMOKE DETECTOR & TEST STATION
- FIRE ALARM PULL STATION - MOUNT 48" AFF
- CABLE TV JUNCTION BOX "CTV" - SIZE AS REQUIRED BY CABLE TV CO.
- TV OUTLET LOCATION