

DRIVE-UP ATM HOLE IN THE WALL

Drive-Up New Hole

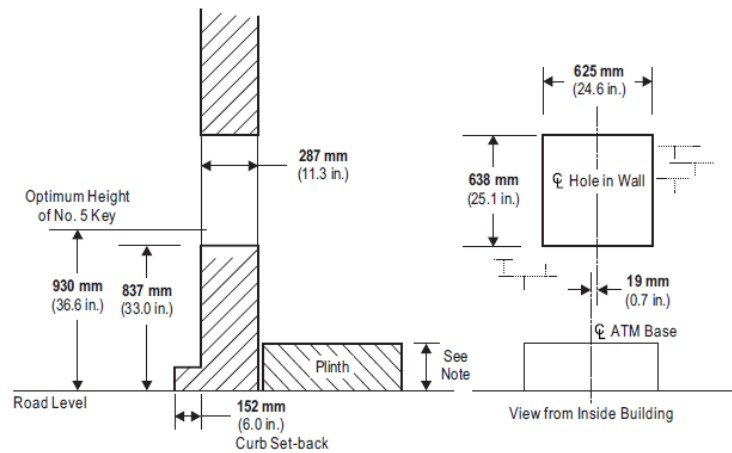
It is the responsibility of the owning institution to ensure that the heights from the sidewalk level to the fascia items comply with any local regulations.

Note 1: The open advert and ADA collars are not available on drive-up ATMs.

Note 2: The height of the plinth depends upon the difference in height between the sidewalk and the interior floor. If there is no difference, as the illustrations show, the plinth must have the height that is specified below.

Standard Sleeve

The standard sleeve ATM can be installed through a wall that is a maximum of **287 mm** (11.3 in.) thick.



Note: For UL security enclosures, this dimension is **271 mm** (10.7 in.). For CEN security enclosures, this dimension is **262 mm** (10.3 in.).