

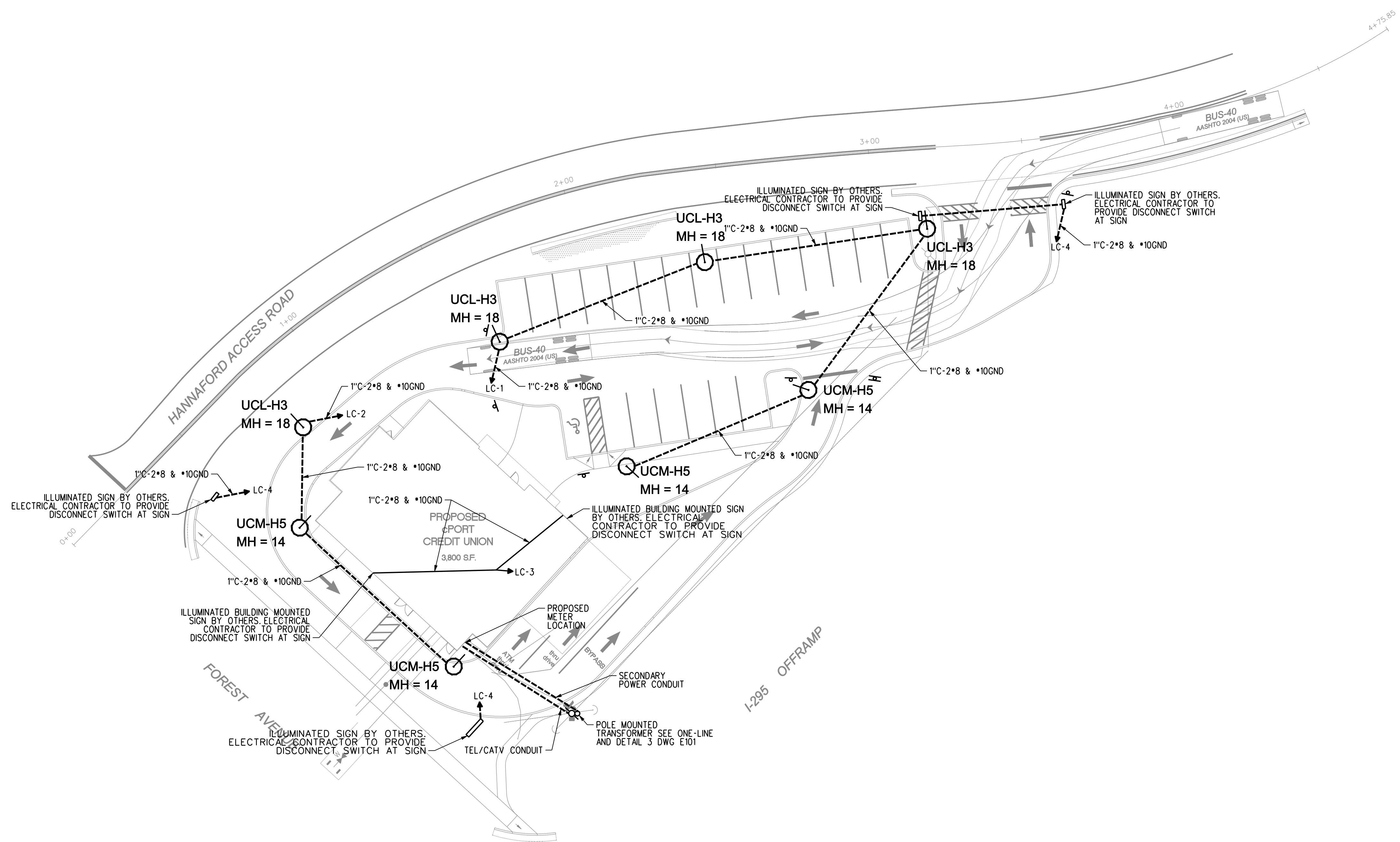
REVISIONS		
#	DATE	DESCRIPTION
1	8/19/11	Revised 90% Review Set Issued For Construction

DATE:	11.8.11
PROJECT #:	090609
DRAWN BY:	twg
CHECKED BY:
DRAWING SCALE:	AS NOTED

SHEET TITLE
SITE POWER PLAN

E100

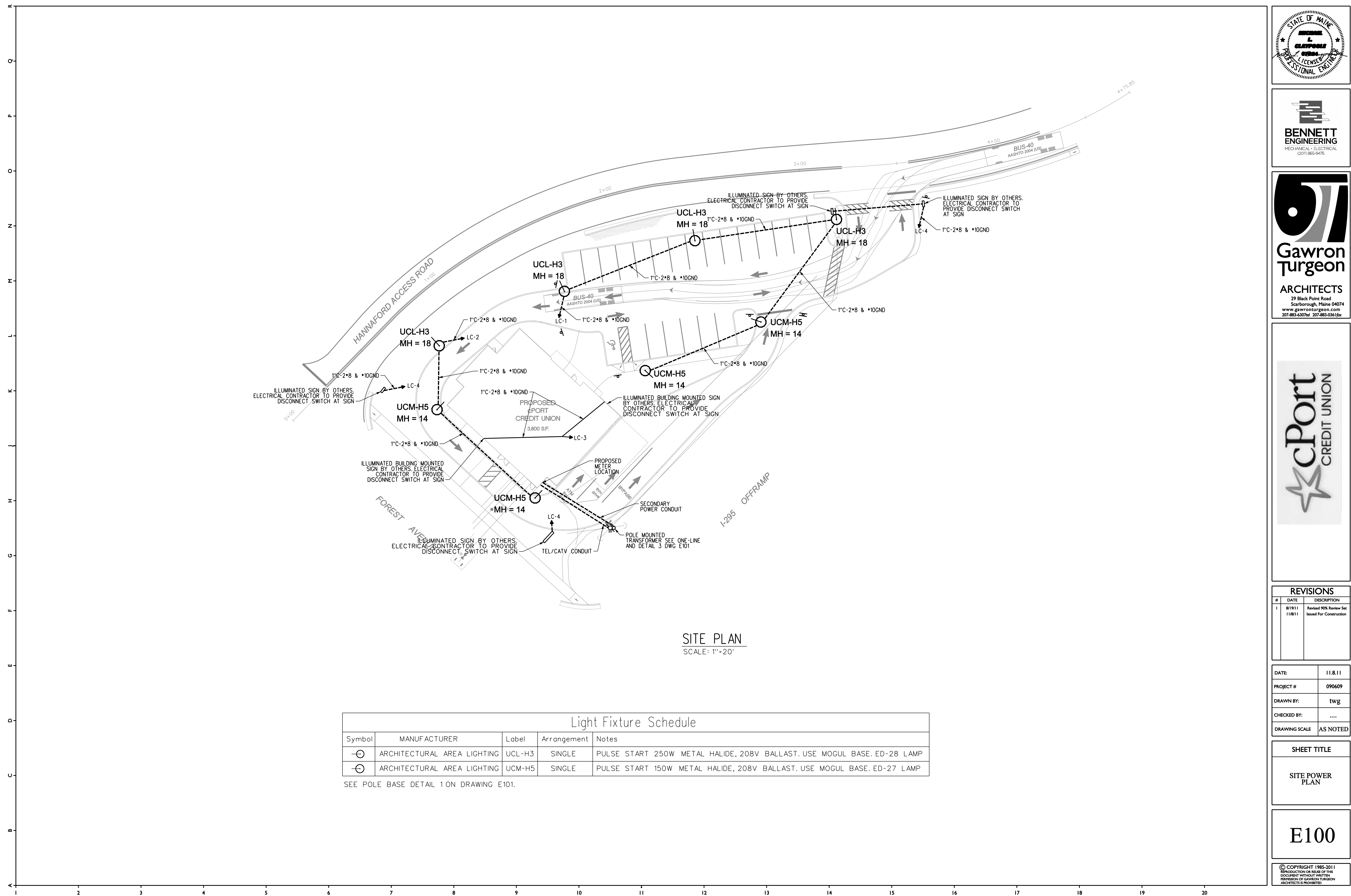
© COPYRIGHT 1985-2011
REPRODUCTION OR USE OF THIS DOCUMENT WITHOUT WRITTEN PERMISSION OF GAWRON TURGEON ARCHITECTS IS PROHIBITED.



SITE PLAN
SCALE: 1"=20'

Light Fixture Schedule				
Symbol	MANUFACTURER	Label	Arrangement	Notes
⊙	ARCHITECTURAL AREA LIGHTING	UCL-H3	SINGLE	PULSE START 250W METAL HALIDE, 208V BALLAST. USE MOGUL BASE. ED-28 LAMP
⊙	ARCHITECTURAL AREA LIGHTING	UCM-H5	SINGLE	PULSE START 150W METAL HALIDE, 208V BALLAST. USE MOGUL BASE. ED-27 LAMP

SEE POLE BASE DETAIL 1 ON DRAWING E101.

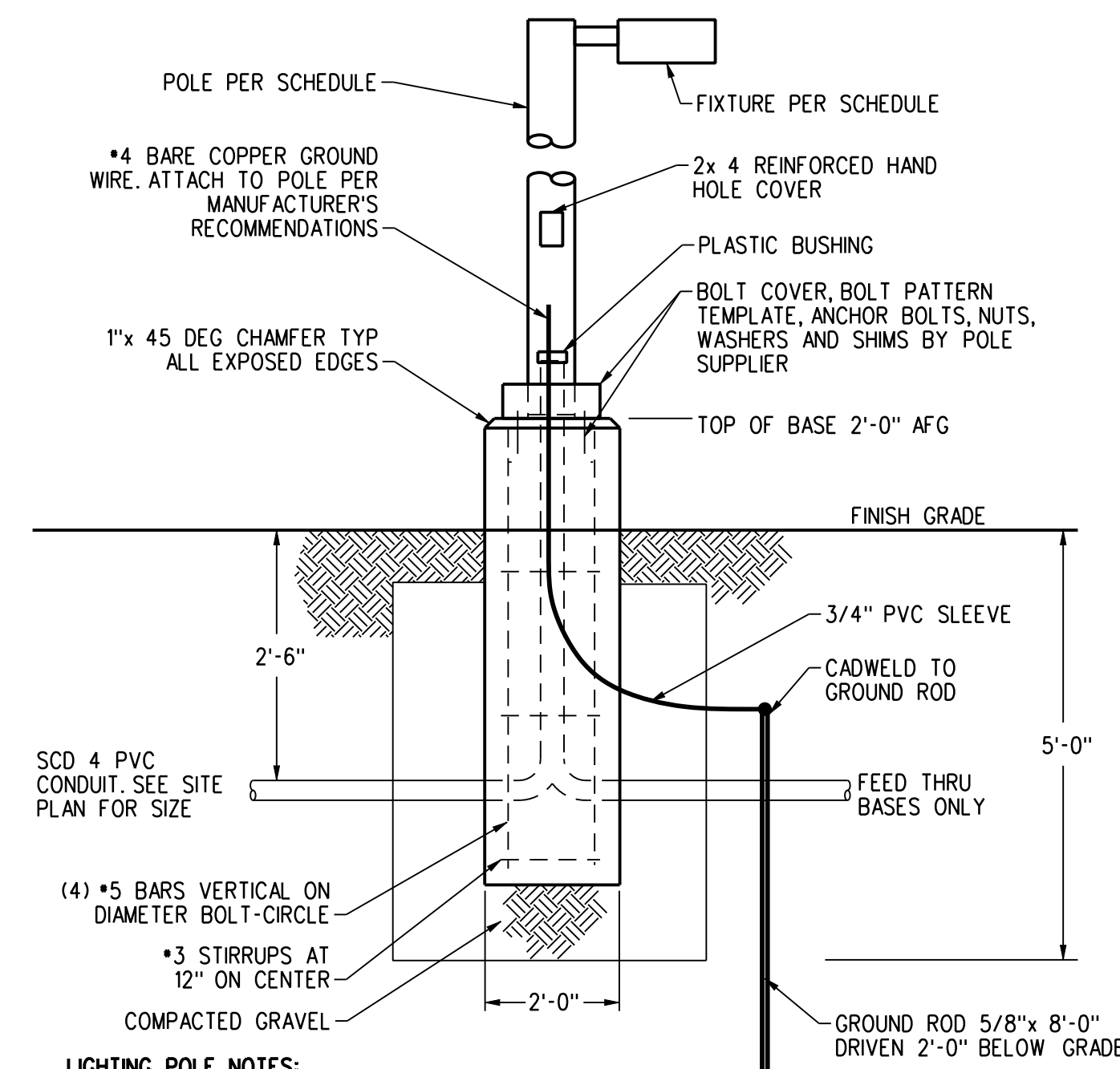


GENERAL NOTES

- NOT ALL SYMBOLS INDICATED IN THE LEGEND APPEAR ON THE DRAWINGS. COORDINATE WORK ACCORDINGLY. COMPLY WITH SPECIFICATIONS AND NOTES BELOW AS APPLICABLE.
- ALL RECEPTACLES SHALL BE INSTALLED 18" AFF TO CENTERLINE OF BOX UNLESS NOTED OTHERWISE.
- PROVIDE PANELBOARDS AS MANUFACTURED BY SQUARE D, GENERAL ELECTRIC, SIEMENS, CUTLER HAMMER OR APPROVED EQUAL.
- ALL WIRING SHALL BE COPPER UNLESS DESIGNATED AS "AL" UNLESS OTHERWISE NOTED. ALL WIRING SHALL BE #12 AWG, AND #12 EQUIPMENT GROUNDING CONDUCTOR, HOMERUNS FED FROM A 20A-1P, 120V CIRCUIT IN EXCESS OF 70' SHALL BE #10 AWG.
- CONNECT BATTERY BACKED EMERGENCY AND EXIT LIGHTING TO NEAREST LIGHTING CIRCUIT AHEAD OF ANY SWITCHING. CONNECT REMOTE HEADS WITH #10 AWG COPPER CONDUCTORS. AC EXIT FIXTURES SHALL BE CONNECTED TO NEAREST EMERGENCY CIRCUIT OR AS INDICATED.
- TEST ALL EMERGENCY LIGHTING UNITS FOR PROPER OPERATION OF LAMPS AND BATTERIES.
- FUSES AND OVERLOAD UNITS FOR MOTORS SHALL BE SIZED BASED ON ACTUAL MOTOR NAMEPLATE DATA AND IN ACCORDANCE WITH NEC CIRCUIT BREAKERS FOR MOTORS ARE SUPPLIED AT MAX VALUE PER NEC (2.5 x FLA). SIZE IN THE FIELD IN ACCORDANCE WITH MFR. RECOMMENDATION.
- ALL WORK SHALL COMPLY WITH NFPA70, NFPA72, NFPA101 & ALL FEDERAL, STATE & LOCAL REGULATIONS.
- ALL PENETRATIONS THROUGH FLOORS, RATED WALLS AND PARTITIONS SHALL BE SEALED WITH UL APPROVED FIRE SEALANT MATERIAL TO MAINTAIN FIRE RATING FOR THE SEPARATION.
- ALL ENCLOSURES, CONDUIT BODIES AND THEIR COVERS CONTAINING FIRE ALARM SYSTEM CONDUCTORS SHALL BE PAINTED RED.
- AN EQUIPMENT GROUNDING CONDUCTOR SHALL BE INSTALLED WITH ALL FEEDERS AND BRANCH CIRCUITS. SIZE IN ACCORDANCE WITH NFPA 70 ARTICLE 250.
- PROVIDE TWO BALLASTS FOR EACH FIXTURE INDICATED AS REQUIRING DUAL LEVEL SWITCHING. ONE BALLAST TO CONTROL OUTER LAMPS AND THE SECOND BALLAST TO CONTROL INNER LAMP(S).
- COORDINATE INSTALLATION OF VOICE/DATA OUTLETS WITH OWNER, MIS OR COMMUNICATIONS CONTRACTOR. PROVIDE HOMERUNS FROM EACH TO BACKBOARD (CATSE CABLE).
- LOCATE DISCONNECTS AT EQUIPMENT AS REQUIRED BY MANUFACTURER. LOCATIONS ON DRAWINGS ARE APPROXIMATE.
- OPERATE ALL FLUORESCENT AND METAL HALIDE LAMPS FROM INITIAL INSTALLATION FOR 100 HOURS AT FULL OUTPUT (NO DIMMING) TO SEASON LAMPS AND STABILIZE LAMP COLOR.
- PROVIDE RISER OR PLENUM RATED CABLES ABOVE SUSPENDED CEILINGS.
- THE CONTRACTOR SHALL SET ALL ELECTRONIC BREAKERS TO SPECIFIED TRIP SETTINGS BEFORE ENERGIZING EQUIPMENT.
- PROVIDE EXPANSION FITTINGS FOR ALL UNDERGROUND RACEWAYS ENTERING ENCLOSURES ATTACHED TO FIXED STRUCTURES.
- OUTDOOR RECEPTACLE COVERS SHALL COMPLY WITH NFPA 70 - ARTICLE 406.9.
- ALL CONDUCTOR INSULATION FOR BUILDING WIRE SHALL BE THWN/THNN UNLESS NOTED OTHERWISE.
- PROVIDE LABEL ON SERVICE EQUIPMENT INDICATING AVAILABLE SHORT CIRCUIT CURRENT ADD TO MASTER AND DATE. OBTAIN VALUES FROM ENGINEER.
- PROVIDE ARC FAULT LABELS PER NFPA 70 - ARTICLE 110.24
- PROVIDE UL APPROVED BONDING CONNECTION FOR EXTERIOR CONDUCTORS FOR COMMUNICATIONS, LOW VOLTAGE AND POWER SYSTEMS.

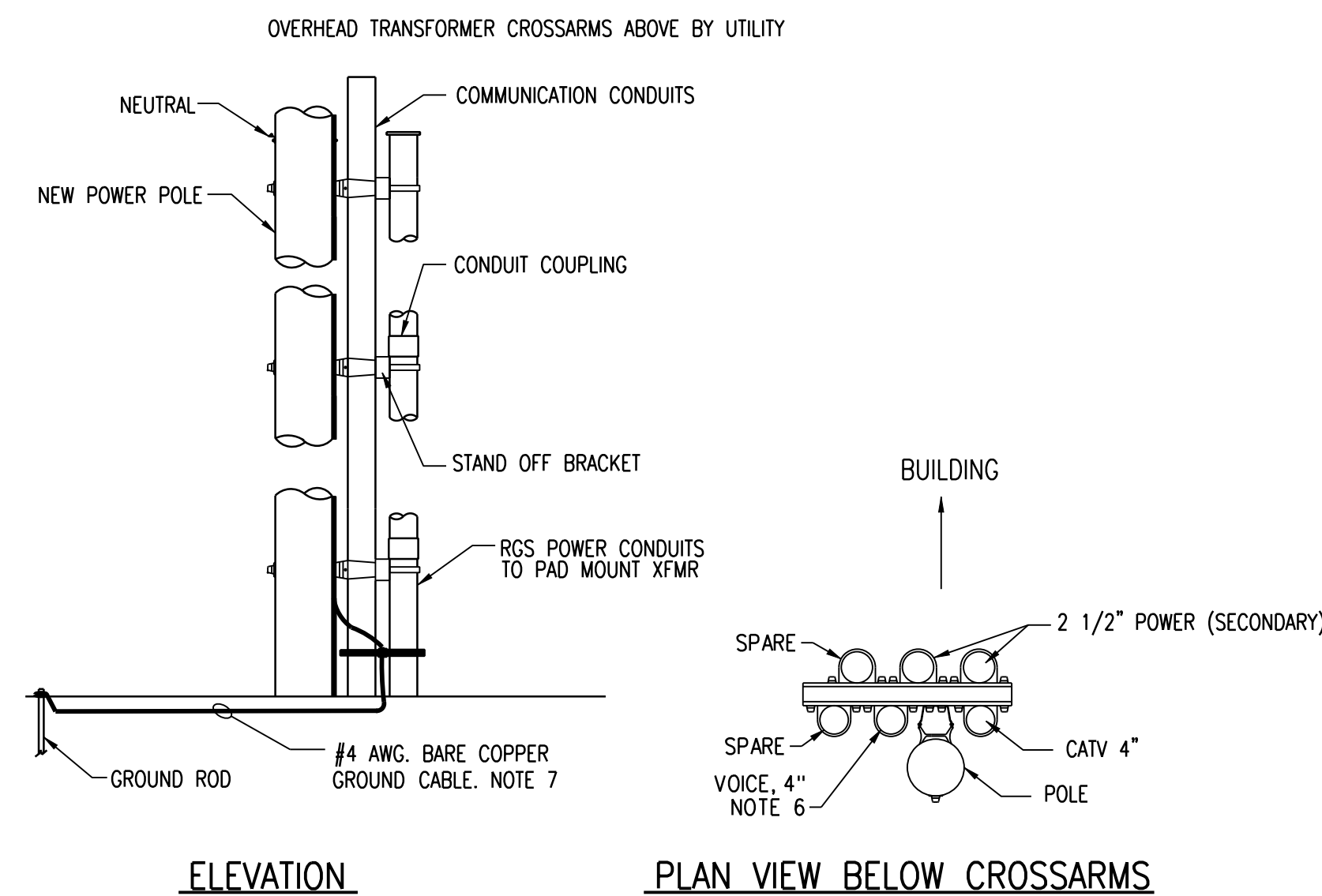
SITE ELECTRICAL - GENERAL NOTES

- THE COMPLETE INSTALLATION SHALL CONFORM WITH ALL APPLICABLE FEDERAL, STATE AND LOCAL LAWS, CODES AND ORDINANCES, INCLUDED BUT NOT LIMITED TO APPROVED EDITIONS OF THE FOLLOWING: NATIONAL ELECTRICAL SAFETY CODE (ANSI/C2); NATIONAL ELECTRICAL CODE (NFPA 70); OCCUPATIONAL SAFETY AND HEALTH ACT (OSHA) AND ALL AMENDMENTS THERETO. NOTHING CONTAINED IN THE DRAWINGS AND SPECIFICATIONS SHALL BE CONSTRUED TO CONFLICT WITH THESE LAWS, CODES, AND ORDINANCES, AND THEY ARE THEREBY INCLUDED IN THESE SPECIFICATIONS. OBTAIN PERMITS AND REQUEST INSPECTIONS FROM ALL AUTHORITIES HAVING JURISDICTION. COMPLY WITH ALL CMP, FAIRPOINT COMMUNICATIONS, CABLE TELEVISION PROVIDER REGULATIONS AND STANDARDS.
- THE FOLLOWING ELECTRICAL WORK SHALL BE PERFORMED UNDER THIS CONTRACT: UNDERGROUND CONDUIT, FITTINGS, AND ALL DEVICES; PROVISION OF HAND HOLES, NEW LIGHTING FIXTURES, POLES WITH ALL ACCESSORIES INCLUDING ANCHOR BOLTS AND POLE BASES; PROVISION OF UNDERGROUND CONDUIT AND WIRE TO SERVE NEW LIGHTING EQUIPMENT AND RECEPTACLES; PROVISION OF SERVICE EQUIPMENT INCLUDING OUTDOOR CABINETS, GROUNDING, METER ENCLOSURES, AND WEATHERPROOF RECEPTACLES.
- CMP (ELECTRICAL UTILITY) SHALL PROVIDE ALL ASSOCIATED OVERHEAD AND UNDERGROUND PRIMARY WIRING, PRIMARY TERMINATIONS, NEW UTILITY POLE TRANSFORMERS, AND CONNECTIONS TO EXISTING OVERHEAD LINES.
- PROVIDE UNDERGROUND ELECTRICAL WARNING TAPE: 6" WIDE PLASTIC TAPE, COLORED RED WITH SUITABLE LEGEND DESCRIBING BURIED ELECTRICAL LINES FOR ALL UNDERGROUND CONDUITS. LOCATE 6 INCHES BELOW THE FINISHED GRADE.
- REFER TO CIVIL DRAWINGS FOR EXCAVATION AND BACKFILL OF ALL UNDERGROUND WORK.
- EXISTING UTILITY LOCATIONS ARE APPROXIMATE AND SHALL BE FIELD VERIFIED. CONTRACTORS SHALL CONTACT DIG SAFE BEFORE BEGINNING ANY EXCAVATIONS.
- FINAL LOCATION OF UTILITIES MAY VARY FROM PLANS PENDING UTILITY COMPANY FIELD COORDINATION.
- SEE THIS DRAWING FOR ADDITIONAL SITE DETAILS.
- THE LOCAL TELEPHONE SERVICE PROVIDER AND THE CABLE TV COMPANY SHALL PROVIDE AND INSTALL ALL THE SITE UTILITY SERVICE CABLE TO NEW ELECTRICAL ROOM BACKBOARD IN THE CONDUITS PROVIDED AS PART OF THE SITE WORK.
- OBTAIN THE SERVICES OF DIG SAFE TO CONFIRM LOCATIONS OF EXISTING UTILITIES.
- UNDERGROUND CONDUIT SHALL BE SCHED 40 PVC. ABOVE GRADE CONDUIT SHALL BE RGS. ALL CONDUIT SWEEPS SHALL BE RGS LONG SWEEPS.
- PROVIDE EXPANSION FITTINGS FOR ALL UNDERGROUND CONDUIT CONNECTED TO ABOVE GROUND STRUCTURES.



- LIGHTING POLE NOTES:**
- POLE BASE MAY BE PRECAST.
 - PAINT EXPOSED CONCRETE WITH (2) TWO COATS OF BRONZE MASONRY PAINT.
 - CONCRETE WITH AIR ENTRAINED AGENT. 4000 P.S.I. AFTER 30 DAYS

1 POLE BASE DETAIL
SCALE: NONE



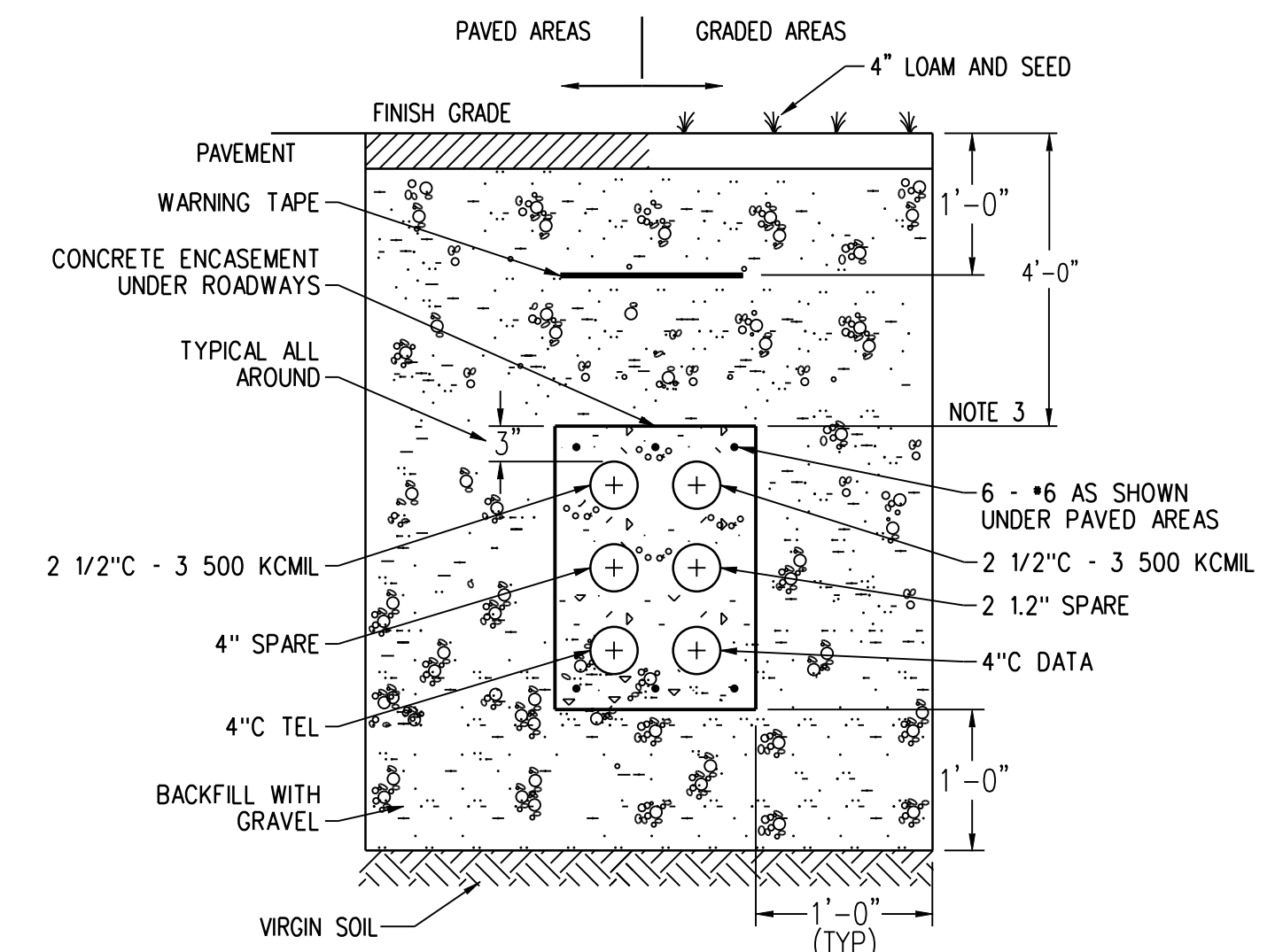
3 RISER POLE P1 - BRACKET DETAIL
SCALE: NONE

NOTES:

- PROVIDE STANDOFF BRACKETS AS INDICATED.
- CONDUIT SHALL BE RGS CONDUIT ONLY.
- TOP CONDUIT SECTIONS LONGER THAN 24" SHALL BE SUPPORTED.
- LOWEST BRACKET SHALL BE MINIMUM OF 8' ABOVE FINISHED GRADE.
- ONE BRACKET SHALL BE USED TO SUPPORT EACH 10' SECTION OF CONDUIT WITH THE BRACKET PLACED JUST BELOW THE RISER CONDUIT COUPLING.
- LOCATION FOR COMMUNICATION CONDUITS.
- GROUND RGS RISERS TO GROUND ROD, PIPE CLAMP AND EXTEND #4 AWG CONDUCTOR UP RISER POLE TO NEUTRAL. BOND GUY WIRE TO SYSTEM NEUTRAL. PROVIDE A YELLOW, PVC U GUARD FOR THE GROUND WIRE.

UTILITY COORDINATION NOTES:

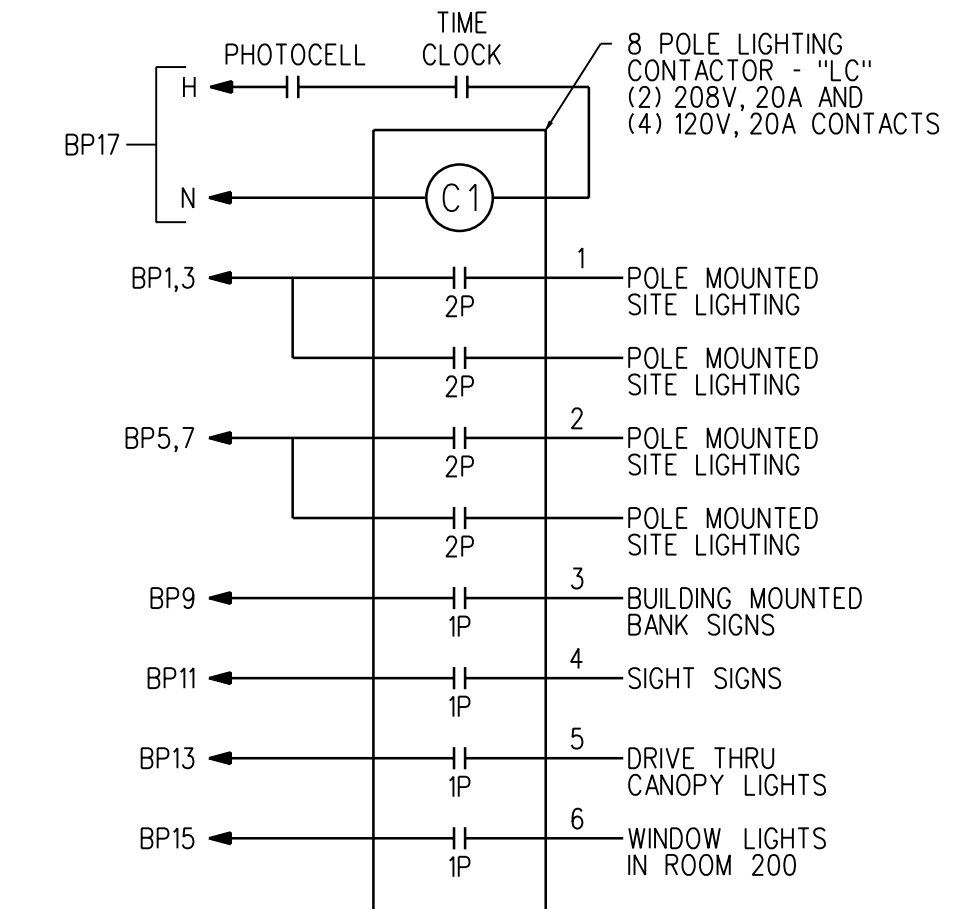
- A TELEPHONE CABLE WILL BE INSTALLED TO THE MECHANICAL ROOM BY THE UTILITY (FAIRPOINT). PROVIDE CONDUIT AS INDICATED ON DRAWINGS. FAIRPOINT WILL TERMINATE PAIRS AT THE EQUIPMENT INSIDE THE MECHANICAL ROOM.
- A CATV CABLE SHALL BE INSTALLED TO THE MECHANICAL ROOM BY UTILITY INSTALL TERMINATIONS FOR CATV HOMERUNS.
- COORDINATE INSTALLATION WITH ALL UTILITY REGULATIONS.



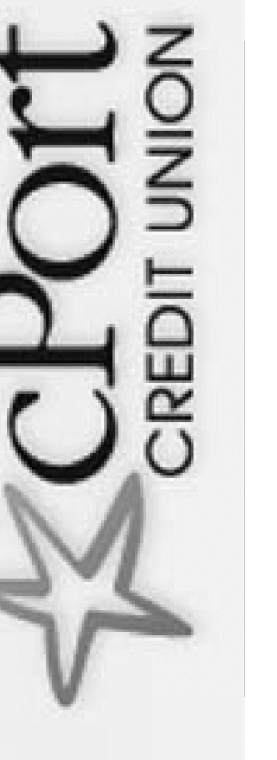
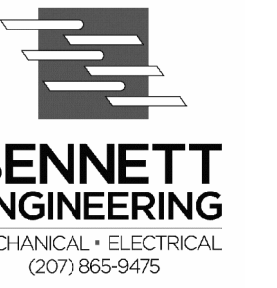
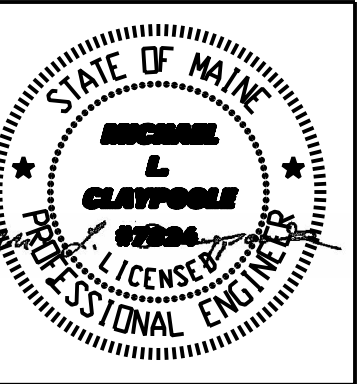
2 SECONDARY ELECTRICAL DUCT BANK SECTION
SCALE: NONE

NOTES:

- USE RIGID STEEL GALVANIZED LONG SWEEPS AND RIGID STEEL GALVANIZED CONDUIT FROM DUCT BANKS INTO EQUIPMENT PADS.
- SITE LIGHTING CONDUIT 30" BELOW GRADE. CONCRETE ENCASED UNDER ROADWAYS. OTHER SITE CONDUITS SIMILAR BUT SMALLER TRENCH AND CONDUIT SIZES AS INDICATED.
- PROVIDE PULL STRING IN CATV AND TELEPHONE CONDUITS. ROUTE CONDUITS TO BACKBOARD.



4 LIGHTING CONTACTOR "LC" DETAIL
SCALE: NONE



REVISIONS

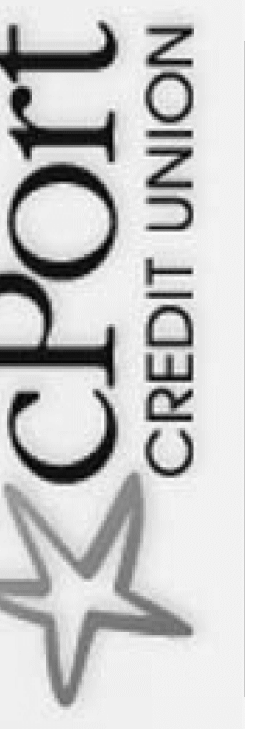
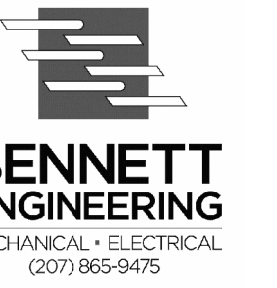
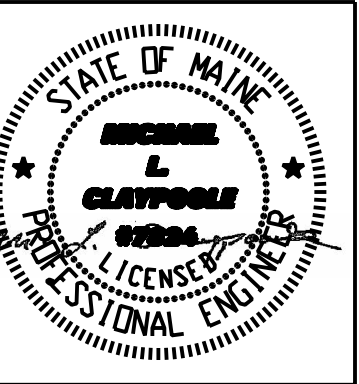
#	DATE	DESCRIPTION
1	8/19/11	Revised 90% Review Set
	11/8/11	Issued For Construction

DATE:	11.8.11
PROJECT #:	090609
DRAWN BY:	twg
CHECKED BY:
DRAWING SCALE:	AS NOTED

SHEET TITLE

SITE ELECTRICAL DETAILS

E101



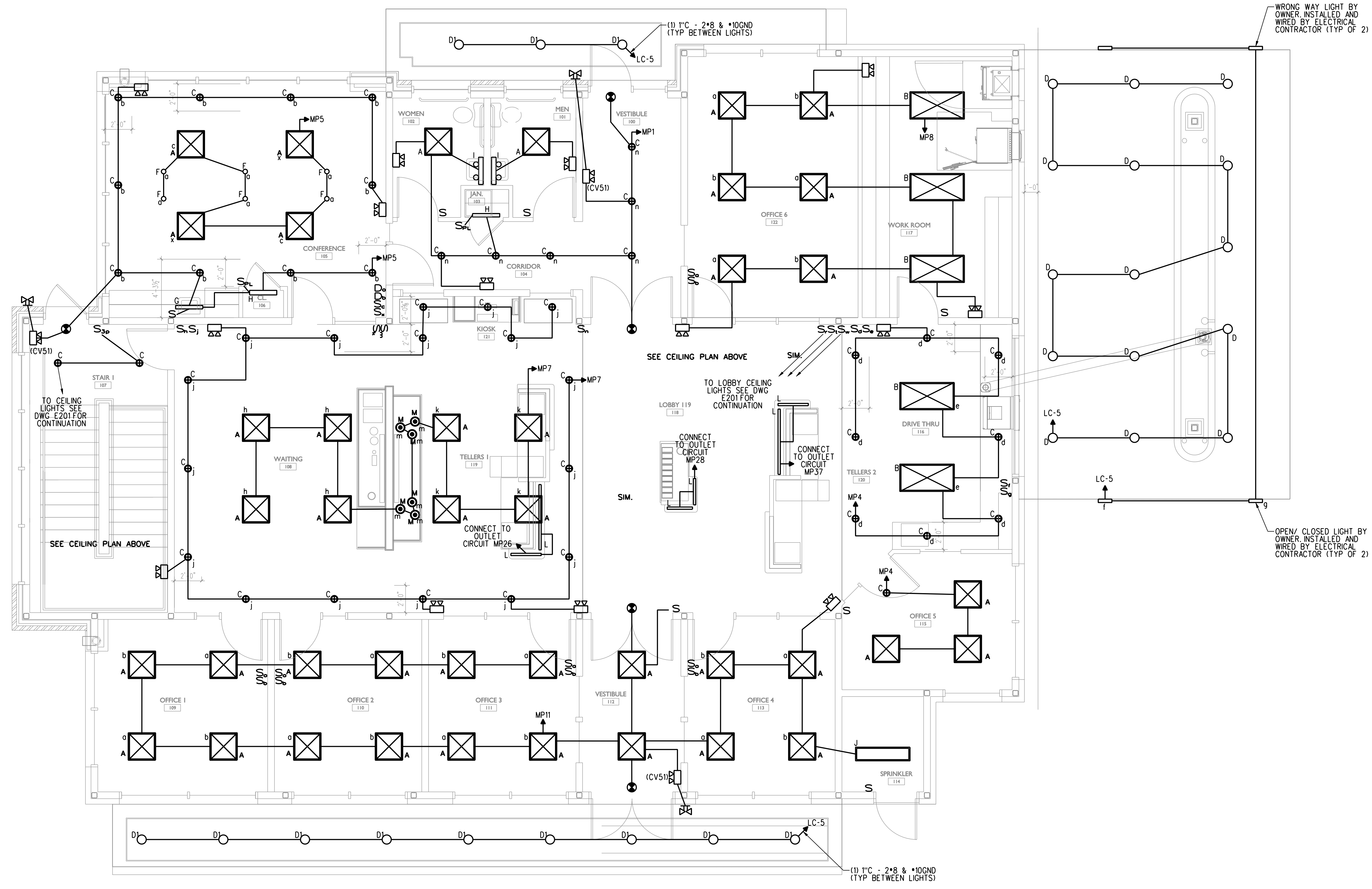
REVISIONS		
#	DATE	DESCRIPTION
1	8/19/11	Revised 90% Review Set Issued For Construction

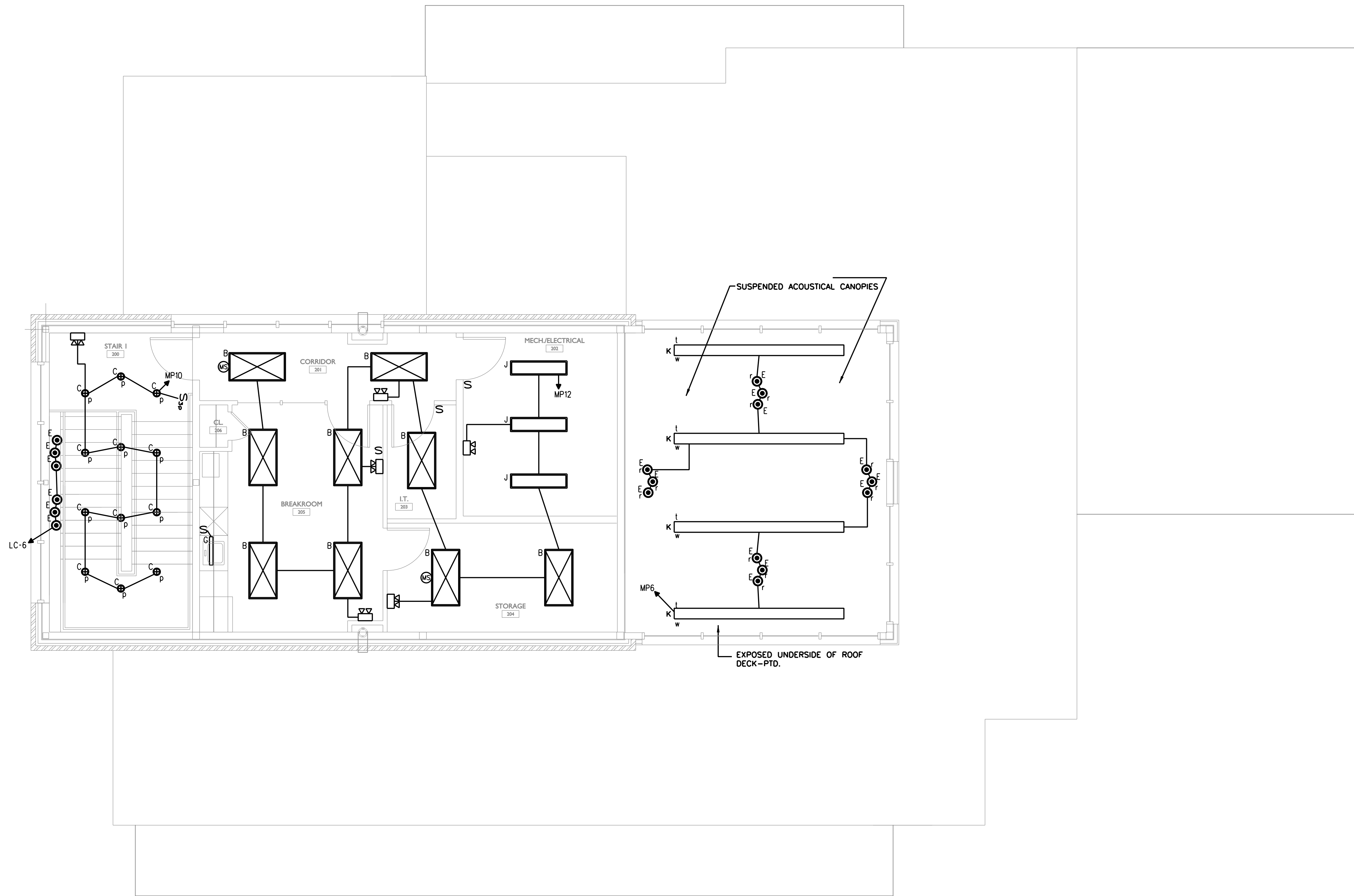
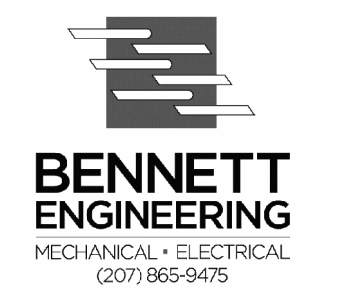
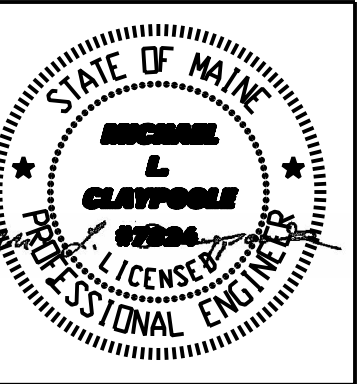
DATE:	11.8.11
PROJECT #:	090609
DRAWN BY:	twg
CHECKED BY:
DRAWING SCALE:	1/4"=1'-0"

SHEET TITLE
 FIRST FLOOR LIGHTING
 AND
 LIFE SAFETY LIGHTING
 PLAN

E200

© COPYRIGHT 1985-2011
 REPRODUCTION OR USE OF THIS
 DOCUMENT WITHOUT WRITTEN
 PERMISSION OF GAWRON TURGEON
 ARCHITECTS IS PROHIBITED.





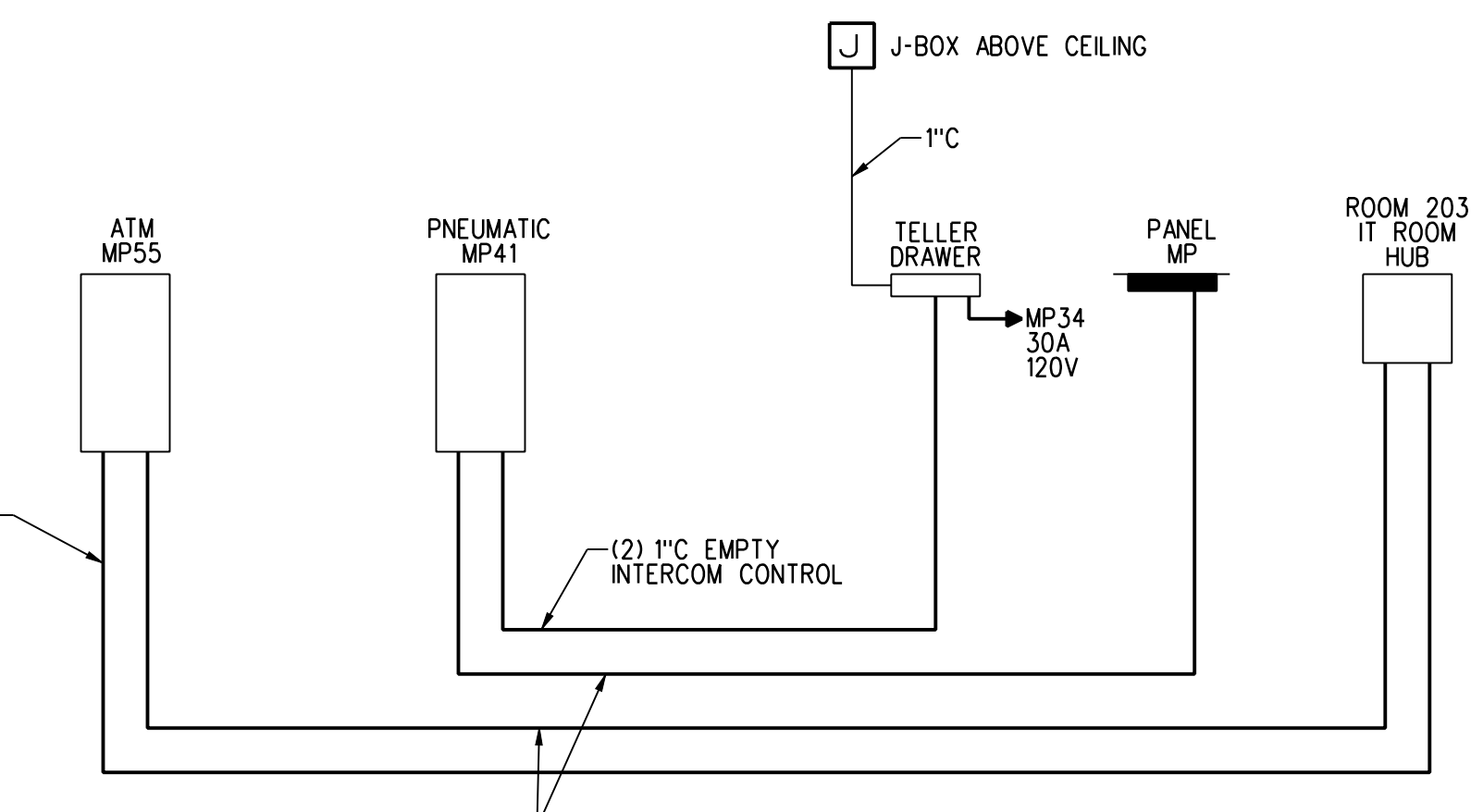
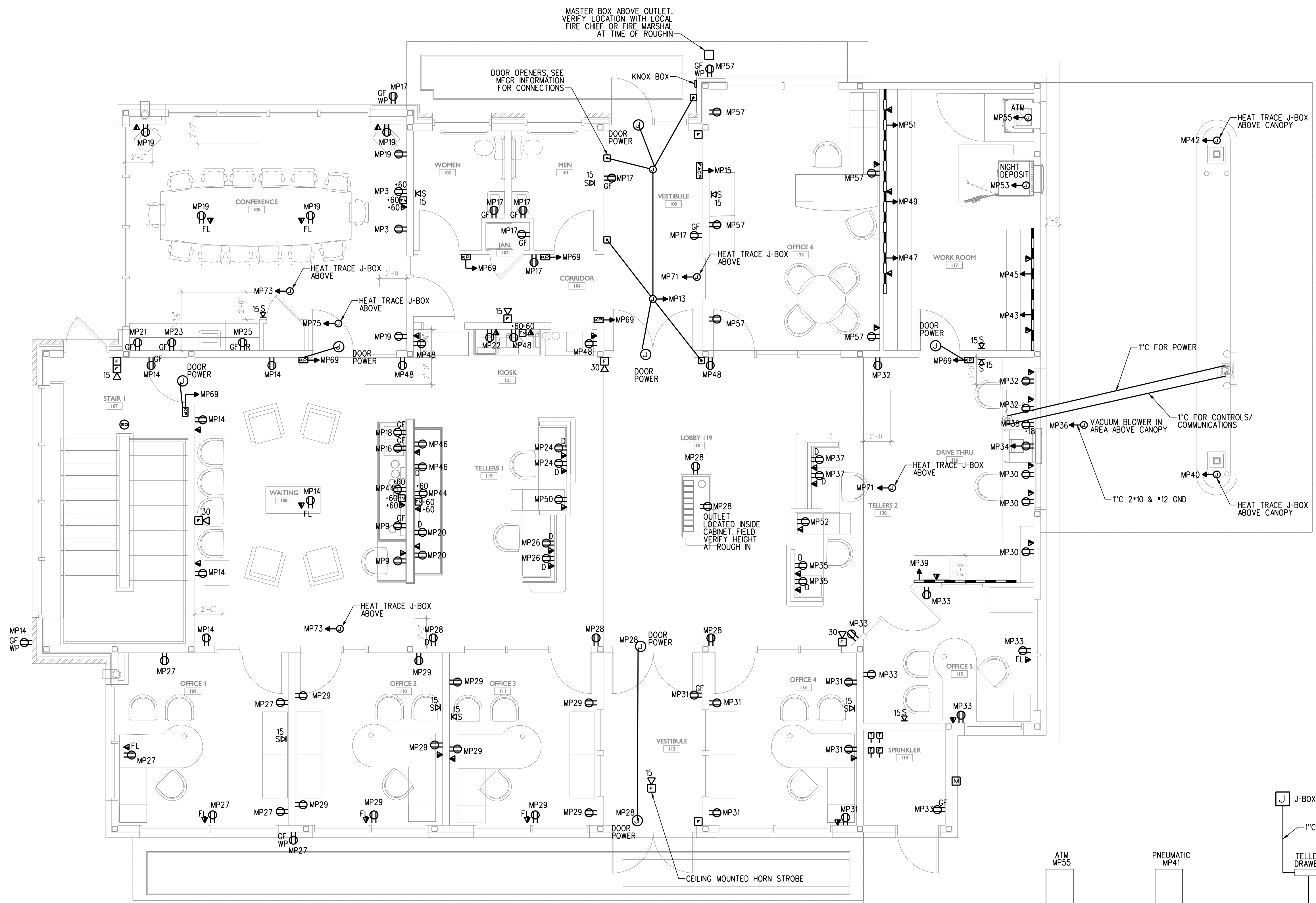
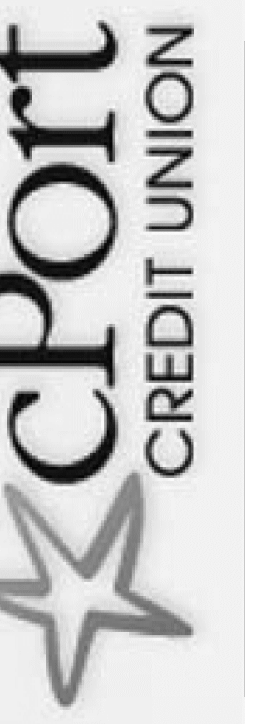
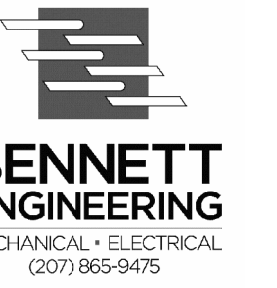
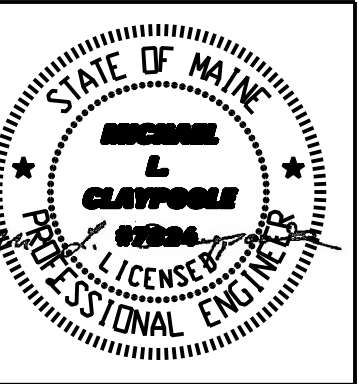
REVISIONS		
#	DATE	DESCRIPTION
1	8/19/11	Revised 90% Review Set
	11/8/11	Issued For Construction

DATE:	11.8.11
PROJECT #:	090609
DRAWN BY:	twg
CHECKED BY:
DRAWING SCALE:	1/4"=1'-0"

SHEET TITLE
 SECOND FLOOR LIGHTING
 AND
 LIFE SAFETY LIGHTING
 PLAN

E201

© COPYRIGHT 1985-2011
 REPRODUCTION OR RELEASE OF THIS
 DOCUMENT WITHOUT WRITTEN
 PERMISSION OF GAWRON TURGEON
 ARCHITECTS IS PROHIBITED.



TELLER RISER DETAIL

NOTE, COORDINATE ALL WORK WITH PORTLAND SAFE CONSULTING: JOHN FECTEAU 207 893 1800

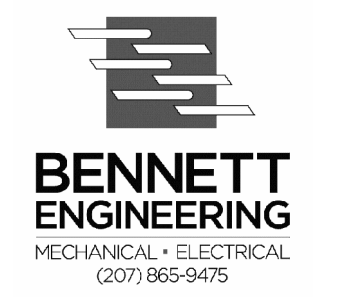
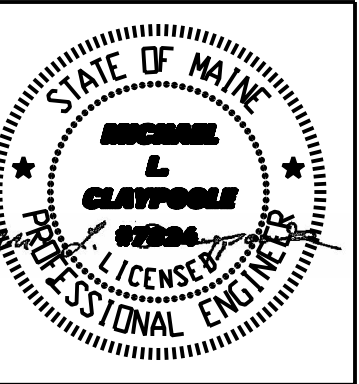
REVISIONS		
#	DATE	DESCRIPTION
1	8/19/11	Revised 90% Review Set Issued For Construction

DATE:	11.8.11
PROJECT #:	090609
DRAWN BY:	twg
CHECKED BY:
DRAWING SCALE:	1/4"=1'-0"

SHEET TITLE
FIRST FLOOR POWER PLAN

E300

© COPYRIGHT 1985-2011 REPRODUCTION OR USE OF THIS DOCUMENT WITHOUT WRITTEN PERMISSION OF GAWRON TURGEON ARCHITECTS IS PROHIBITED.



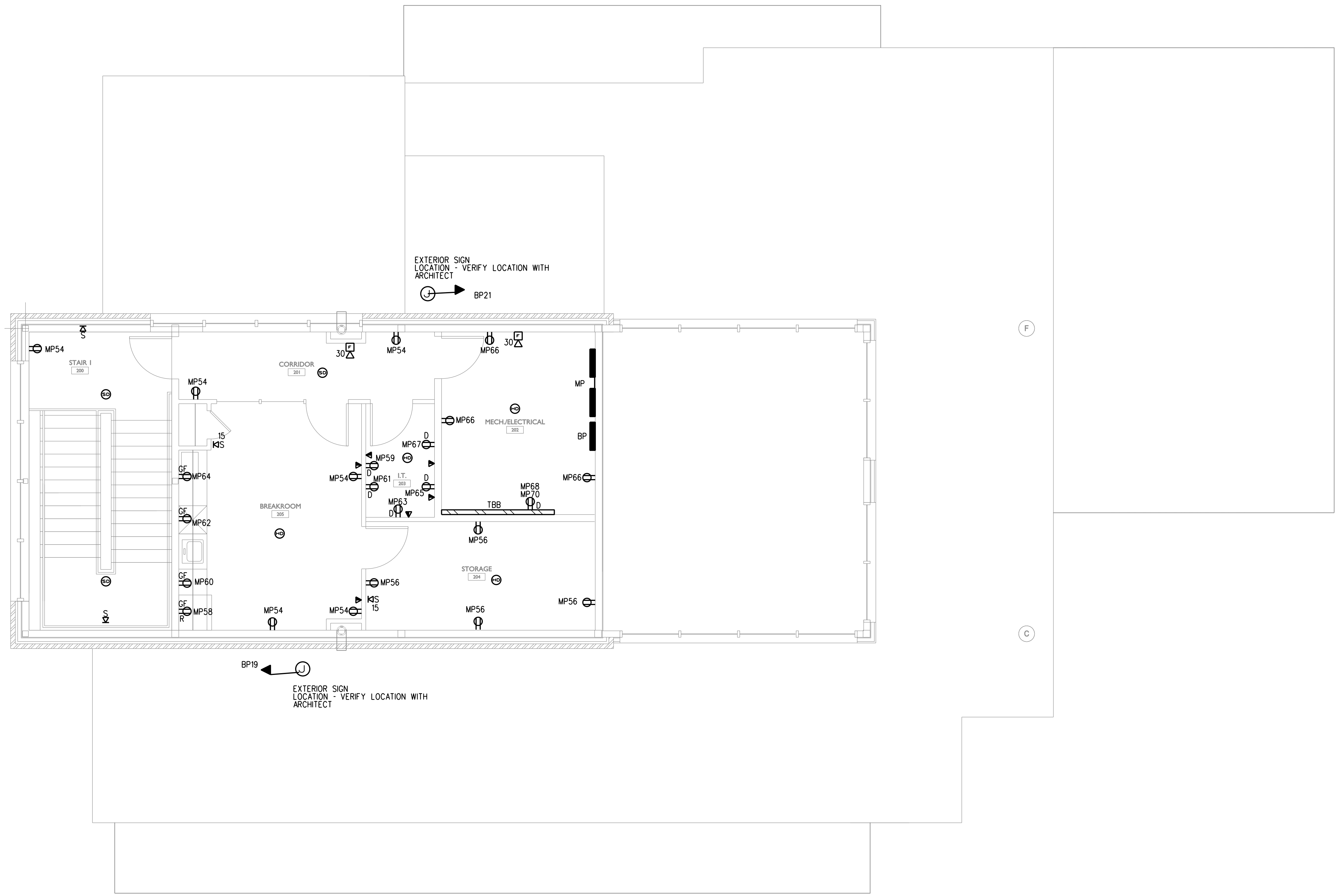
REVISIONS		
#	DATE	DESCRIPTION
1	8/19/11 11/8/11	Revised 90% Review Set Issued For Construction

DATE:	11.8.11
PROJECT #:	090609
DRAWN BY:	twg
CHECKED BY:
DRAWING SCALE:	1/4"=1'-0"

SHEET TITLE
SECOND FLOOR
POWER PLAN

E301

© COPYRIGHT 1985-2011
REPRODUCTION OR RELEASE OF THIS
DOCUMENT WITHOUT WRITTEN
PERMISSION OF GAWRON TURGEON
ARCHITECTS IS PROHIBITED.



V
O
P
O
Z
X
J
Y
I
I
G
L
U
D
U
A
←

1 2 3 4 5 6 7 8 9 10 11 12 13 14 15 16 17 18 19 20

PANEL MP (Elec / Mech Rm) SECTION 1 120/208 3PH 4W 400 AMP BUS - MLO/MCB 42K AIC NEMA TYPE 1 (SURFACE)															
CKT#	LOAD DESCRIPTION	AF	AT	P	CA	DF	DA	CKT#	LOAD DESCRIPTION	AF	AT	P	CA	DF	DA
1	LIGHTS RM's 100, 101, 102, 103 & 104	20	20	1		1.00	0	2	LIGHTS RM's 112, 113, 114 & 115	20	20	1		1.00	0
3	OUTLETS RM 105	20	20	1	3	0.50	2	4	LIGHTS RM's 116 & 120	20	20	1		1.00	0
5	LIGHTS RM's 105 & 106	20	20	1		1.00	0	6	LIGHTS LOBBY	20	20	1		1.00	0
7	LIGHTS RM's 108, 119 & 121	20	20	1		1.00	0	8	LIGHTS RM's 117 & 122	20	20	1		1.00	0
9	OUTLETS RM 108	20	20	1	3	0.50	2	10	LIGHTS RM 200	20	20	1		1.00	0
11	LIGHTS RM's 109, 110 & 111	20	20	1		1.00	0	12	LIGHTS RM's 201, 202, 203, 204 & 205	20	20	1		1.00	0
13	DOOR PUSH BUTTONS RM 100	20	20	1		1.00	0	14	OUTLETS RM's 107 & 108	20	20	1	11	1.00	11
15	F A C P	20	20	1	4	1.00	4	16	COFFEE MAKER RM 108	20	20	1	15	1.00	15
17	OUTLETS RM's 100, 101, 102, 103 & 104	20	20	1	11	0.50	5	18	COFFEE MAKER RM 108	20	20	1	15	1.00	15
19	OUTLETS RM 105	20	20	1	12	0.50	6	20	OUTLETS RM's 119 & 121	20	20	1	8	0.50	4
21	OUTLET RM 105 COUNTER TOP	20	20	1	16	0.50	8	22	KIOSK RM 121	20	20	1	8	0.50	4
23	OUTLET RM 105 COUNTER TOP	20	20	1	16	0.50	8	24	OUTLETS TELLER POD RM 119	20	20	1	12	0.50	6
25	REFRIGERATOR RM 105	20	20	1	14	0.50	7	26	OUTLETS TELLER POD RM 119	20	20	1	12	0.50	6
27	OUTLETS RM 109	20	20	1	9	0.50	5	28	OUTLETS RM's 118 & 119	20	20	1	9	0.50	5
29	OUTLETS RM's 110 & 111	20	20	1	15	0.50	8	30	OUTLETS RM 116	20	20	1	5	0.50	2
31	OUTLETS RM's 112 & 113	20	20	1	9	0.50	5	32	OUTLETS RM 116	20	20	1	5	0.50	2
33	OUTLETS RM's 114 & 115	20	20	1	9	0.50	5	34	DEAL DRAWER	30	30	1	4	1.00	4
35	OUTLETS TELLER POD RM 120	20	20	1	12	0.50	6	36	VACUUM CONVEYOR	30	30	1	20	1.00	20
37	OUTLETS TELLER POD RM 120	20	20	1	12	0.50	6	38	OUTLET AT DRIVE THRU (VACUUM)	20	20	1	3	0.50	2
39	WIRE MOLD RM 116 (DRIVE THRU)	20	20	1	10	0.50	5	40	HEAT TRACE DRIVE THRU	30	30	1		1.00	0
41	VACUUM BLOWER	30	30	1			0	42	HEAT TRACE DRIVE THRU	30	30	1		1.00	0

ELECTRICAL / MECHANICAL ROOM

AF - Amp Frame
 AT - Amp Trip
 P - Poles
 A - Amperes
 CA - Connected Amperes
 DF - Demand Factor (1 - 1)
 DA - Demand Amperes
 MLO - Main Lug Only
 MCB - Main Circuit Breaker
 SEE SWITCHBOARD DATA FOR ELECTRONIC BREAKER SETTINGS

Section 1
Tot Amps/PH - Connected Load 93.17
Demand Factor 76%
Total Amps/PH - Demand 58.00
Connected KVA 33.53
Demand KVA 20.87
Min. Panel Size (Demand x 1.25) - Amps 72.50
Panel Size (Demand x 1.56) - Amperes 90.48

Section 1
Tot Amps/PH - Connected Load 277.40
Demand Factor 76%
Total Amps/PH - Demand 209.82
Connected KVA 99.82
Demand KVA 75.50
Min. Panel Size (Demand x 1.25) - Amps 262.27
Panel Size (Demand x 1.56) - Amperes 327.31

PANEL MP (Elec / Mech Rm) SECTION 2 120/208 3PH 4W 400 AMP BUS - MLO/MCB 42K AIC NEMA TYPE 1 (SURFACE)															
CKT#	LOAD DESCRIPTION	AF	AT	P	CA	DF	DA	CKT#	LOAD DESCRIPTION	AF	AT	P	CA	DF	DA
43	WIRE MOLD RM 117 (WORK ROOM)	20	20	1	10	0.50	5	44	OUTLETS RM 108	20	20	1	6	0.50	3
45	WIRE MOLD RM 117 (WORK ROOM)	20	20	1	10	0.50	5	46	OUTLETS RM 119	20	20	1	8	0.50	4
47	WIRE MOLD RM 117 (WORK ROOM)	20	20	1	10	0.50	5	48	OUTLETS RM 108, 118 & 119	20	20	1	8	0.50	4
49	WIRE MOLD RM 117 (WORK ROOM)	20	20	1	10	0.50	5	50	OUTLET RM 119 TELLER POD	20	20	1	2	0.50	1
51	WIRE MOLD RM 117 (WORK ROOM)	20	20	1	10	0.50	5	52	OUTLET RM 120 TELLER POD	20	20	1	2	0.50	1
53	NIGHT DEPOSIT	20	20	1	4	1.00	4	54	OUTLETS RM's 200, 201 & 205	20	20	1	9	0.50	5
55	A T M RM 117	30	30	1		1.00	0	56	OUTLETS RM 204	20	20	1	6	0.50	3
57	OUTLETS RM 122	20	20	1	6	0.50	3	58	REFRIGERATOR RM 205	20	20	1	14	0.50	7
59	OUTLET IT RM	20	20	1	6	0.50	3	60	OUTLET RM 205 COUNTER TOP	20	20	1	16	0.50	8
61	OUTLET IT RM	20	20	1	6	0.50	3	62	OUTLET RM 205 COUNTER TOP	20	20	1	16	0.50	8
63	OUTLET IT RM	20	20	1	6	0.50	3	64	OUTLET RM 205 COUNTER TOP	20	20	1	16	0.50	8
65	OUTLET IT RM	20	20	1	6	0.50	3	66	OUTLETS RM 202	20	20	1	5	0.50	2
67	OUTLET IT RM	20	20	1	6	0.50	3	68	OUTLET AT TBB TOP (QUAD)	20	20	1	2	0.50	1
69	DOOR KEY PADS	20	20	1	3	1.00	3	70	OUTLET AT TBB BOTTOM (QUAD)	20	20	1	2	0.50	1
71	SPARE	20	20	1			0	72	SPACE						0
73	SPARE	20	20	1			0	74	SPACE						0
75	SPARE	20	20	1			0	76	SPACE						0
77	SPARE	20	20	1			0	78	SPACE						0
79	SPARE	20	20	1			0	80					117	1.00	117
81	SPARE	20	20	1			0	82	PANEL "BP" FEEDER			3	117	1.00	117
83	SPARE	20	20	1			0	84					117	1.00	117

ELECTRICAL / MECHANICAL ROOM

AF - Amp Frame
 AT - Amp Trip
 P - Poles
 A - Amperes
 CA - Connected Amperes
 DF - Demand Factor (1 - 1)
 DA - Demand Amperes
 MLO - Main Lug Only
 MCB - Main Circuit Breaker
 SEE SWITCHBOARD DATA FOR ELECTRONIC BREAKER SETTINGS

Section 2
Tot Amps/PH - Connected Load 184.23
Demand Factor 82%
Total Amps/PH - Demand 151.82
Connected KVA 66.29
Demand KVA 54.63
Min. Panel Size (Demand x 1.25) - Amps 189.77
Panel Size (Demand x 1.56) - Amperes 236.83

PANEL BP (Elec / Mech Rm) 120/208 3PH 4W 200 AMP BUS - MLO/MCB 42K AIC NEMA TYPE 1 (SURFACE)															
CKT#	LOAD DESCRIPTION	AF	AT	P	CA	DF	DA	CKT#	LOAD DESCRIPTION	AF	AT	P	CA	DF	DA
1	POLE MOUNTED SITE LIGHTS	20	20	2	6	1.00	6	2	ALLOWANCE FOR MECHANICAL LOADS. SEE NOTE BELOW	-	-	3	100	1.00	100
3					6	1.00	6	4					100	1.00	100
5	POLE MOUNTED SITE LIGHTS	20	20	2	3	1.00	3	6					100	1.00	100
7					3	1.00	3	8							0
9	BUILDING MOUNTED BANK SIGNS	20	20	1	14	1.00	14	10							0
11	SITE BANK SIGN	20	20	1	6	1.00	6	12							0
13	SITE BANK SIGN	20	20	1	6	1.00	6	14							0
15	SITE BANK SIGN	20	20	1	6	1.00	6	16							0
17	PHOTOCELL / CLOCK	20	20	1	2	1.00	2	18							0
19							0	20							0
21							0	22							0
23							0	24							0
25							0	26							0
27							0	28							0
29							0	30							0
31							0	32							0
33							0	34							0
35							0	36							0
37							0	38							0
39							0	40							0
41							0	42							0

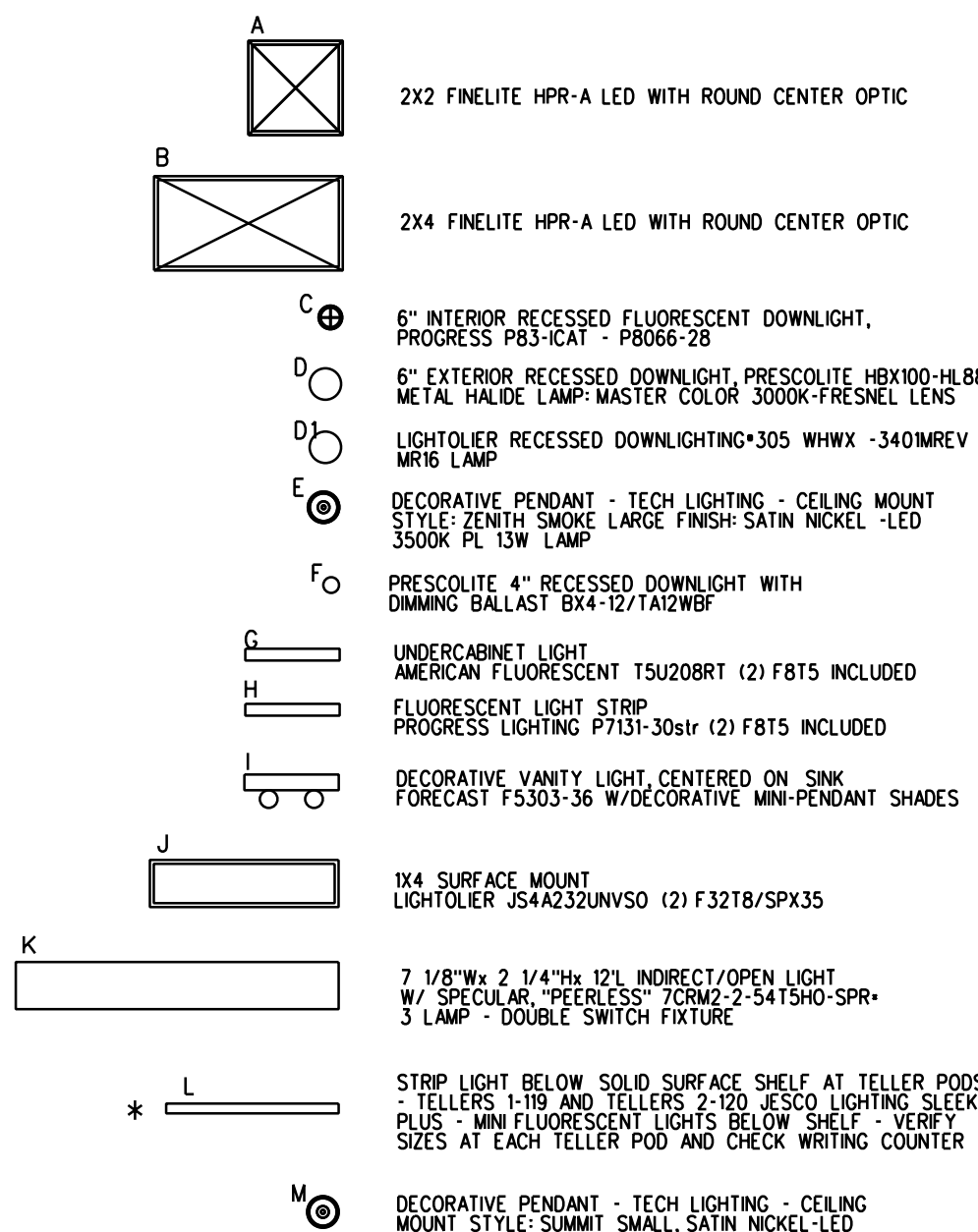
ELECTRICAL / MECHANICAL ROOM

AF - Amp Frame
 AT - Amp Trip
 P - Poles
 A - Amperes
 CA - Connected Amperes
 DF - Demand Factor (1 - 1)
 DA - Demand Amperes
 MLO - Main Lug Only
 MCB - Main Circuit Breaker
 SEE SWITCHBOARD DATA FOR ELECTRONIC BREAKER SETTINGS

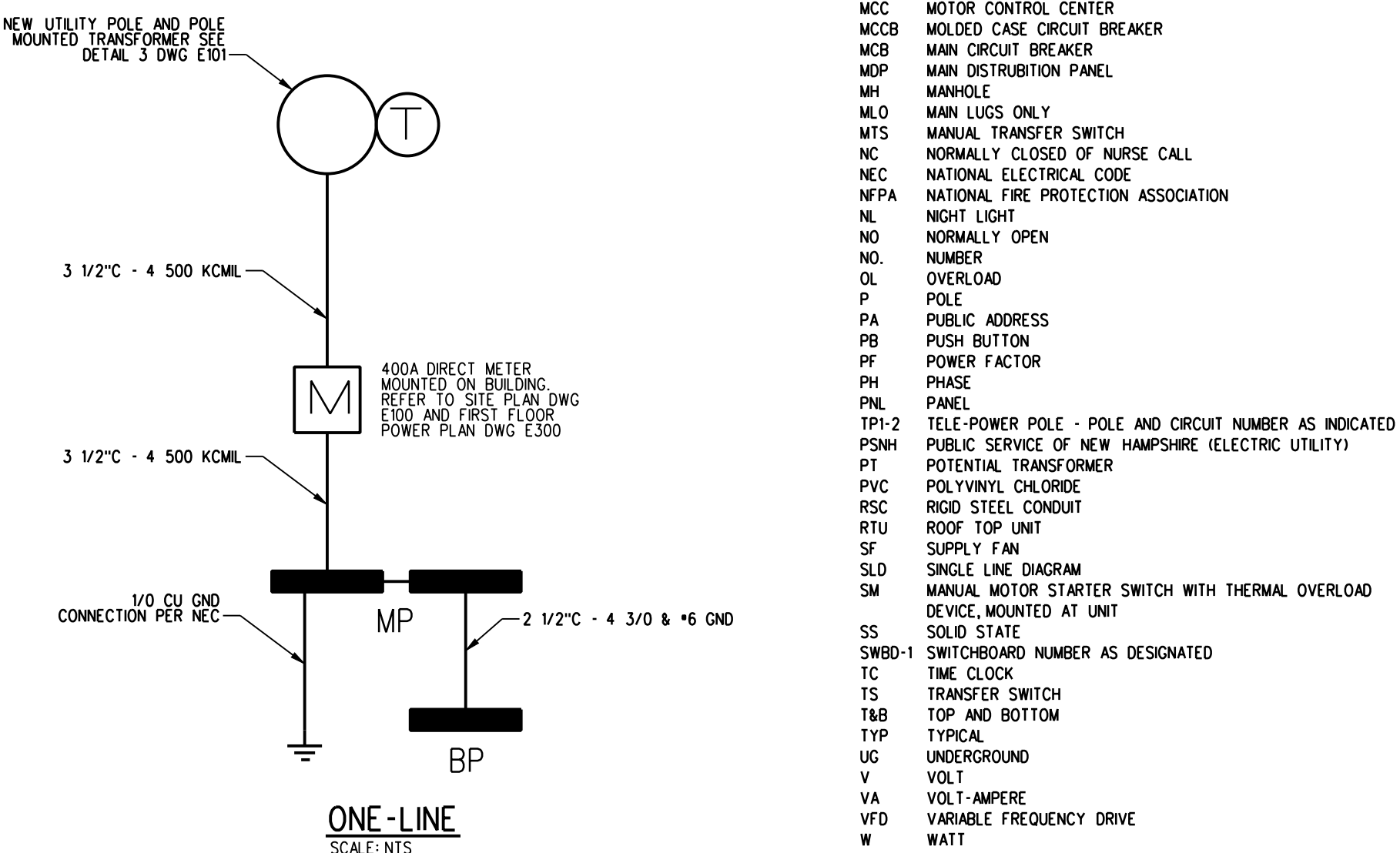
Section 2
Tot Amps/PH - Connected Load 117.07
Demand Factor 100.00%
Total Amps/PH - Demand 117.07
Connected KVA 42.13
Demand KVA 42.13
Min. Panel Size (Demand x 1.25) - Amps 146.33
Panel Size (Demand x 1.56) - Amperes 182.62

NOTE
 CONTRACTOR SHALL SUPPLY BREAKERS FOR MECHANICAL EQUIPMENT PER EQUIPMENT MANUFACTURER RECOMMENDATIONS.

LIGHT FIXTURE SCHEDULE



ALL LIGHTING FIXTURES SHALL BE ENERGY STAR RATED OR HAVE HIGH PERFORMANCE ELECTRONIC BALLAST AND LAMPS TO MEET EFFICIENCY MAINE CRITERIA ALL FLUORESCENT LAMPS 3500K.
 FOR SITE LIGHTING REFER TO DRAWING E100.
 PROVIDE PROGRAM START BALLASTS FOR OCCUPANCY SENSORS AND INSTANT START BALLASTS FOR SWITCHED LIGHTING. MN BF-1.0



ABBREVIATIONS

- A AMP
- AC ALTERNATING CURRENT, ABOVE COUNTER
- ADA AMERICANS WITH DISABILITIES ACT
- AMP FRAME
- AFCI ARC FAULT CIRCUIT INTERRUPTER
- AFB ABOVE FINISHED FLOOR
- AFG ABOVE FINISHED GRADE
- AC AMPERES INTERRUPTING CAPACITY
- AL ALUMINUM
- AT AMP TRIP
- ATC AUTOMATIC TEMPERATURE CONTROL
- ATS AUTOMATIC TRANSFER SWITCH
- AWG AMERICAN WIRE GAUGE
- BLDG BUILDING
- CONDUIT CONDUIT
- CB CIRCUIT BREAKER
- CI CAST IRON
- CKT CIRCUIT
- CL CENTERLINE
- COMP CENTRAL MAINE POWER (ELECTRIC UTILITY)
- CMU CONCRETE MASONRY UNIT
- CU CURRENT TRANSFORMER
- CONC CONCRETE
- CS CARBON STEEL
- CU COPPER
- CUH CABINET UNIT HEATER
- EC ELECTRICAL CONTRACTOR
- EXHAUST FAN
- ER EXISTING REMAINS IN PLACE
- ERL EXISTING RELOCATE
- ERM EXISTING REMOVE
- EUH ELECTRIC UNIT HEATER
- EWA ELECTRICAL WATER COOLER
- FACP FIRE ALARM CONTROL PANEL
- FAPS FIRE ALARM PULL STATION
- FPP FIBER REINFORCED PLASTIC
- FNR FULL VOLTAGE, NON-REVERSING
- FRV REDUCED VOLTAGE, NON-REVERSING
- DC DIRECT CURRENT
- GFI GROUND FAULT INTERRUPTER
- GROUND
- HI HIGH INTENSITY DISCHARGE
- HDA HAND-OFF-AUTOMATIC
- HP HORSEPOWER
- HPS HIGH PRESSURE SODIUM
- HZ HERTZ
- ICB INSULATED CASE CIRCUIT BREAKER
- JB JUNCTION BOX
- KAC THOUSAND AMP INTERRUPTING CAPACITY
- KCMIL THOUSAND CIRCULAR MIL
- KV THOUSAND VOLTS
- KVA THOUSAND VOLT-AMPS
- KW THOUSAND WATTS (KILOWATT)
- LC LIGHTING CONTACTORS
- LCP LATERAL CONTROL PIT
- LED LIGHT EMITTING DIODE
- LP LIGHTING PANELBOARD
- LTG LIGHTING
- LONG TIME, SHORT TRIP, INSTANTANEOUS, GROUND FAULT CIRCUIT BREAKER TRIP FUNCTIONS AS INDICATED
- MCC MOTOR CONTROL CENTER
- MCCB MOLDED CASE CIRCUIT BREAKER
- MCB MAIN CIRCUIT BREAKER
- MDP MAIN DISTRIBUTION PANEL
- MH MANHOLE
- MLO MAIN LUGS ONLY
- MTS MANUAL TRANSFER SWITCH
- NC NORMALLY CLOSED OF NURSE CALL
- NEC NATIONAL ELECTRICAL CODE
- NFPA NATIONAL FIRE PROTECTION ASSOCIATION
- NL NIGHT LIGHT
- NO NORMALLY OPEN
- NO. NUMBER
- OL OVERLOAD
- P POLE
- PA PUBLIC ADDRESS
- PB PUSH BUTTON
- PF POWER FACTOR
- PH PHASE
- PNL PANEL
- TP1-2 TELE-POWER POLE - POLE AND CIRCUIT NUMBER AS INDICATED
- PSNI PUBLIC SERVICE OF NEW HAMPSHIRE (ELECTRIC UTILITY)
- PT POTENTIAL TRANSFORMER
- PVC POLYVINYL CHLORIDE
- RSC RIGID STEEL CONDUIT
- RTU ROOF TOP UNIT
- SF SUPPLY FAN
- SLD SINGLE LINE DIAGRAM
- MCB MANUAL MOTOR STARTER SWITCH WITH THERMAL OVERLOAD DEVICE, MOUNTED AT UNIT
- SS SWITCHBOARD NUMBER AS DESIGNATED
- SWBD-1
- TC TIME CLOCK
- TS TRANSFER SWITCH
- T&B TOP AND BOTTOM
- TYP TYPICAL
- UG UNDERGROUND
- V VOLT
- VA VOLT-AMPERE
- VFD VARIABLE FREQUENCY DRIVE
- W WATT
- W/ WITH
- WP WEATHERPROOF
- XFMR TRANSFORMER
- XP EXPLOSION PROOF
- 3PH THREE PHASE
- 4W FOUR WIRE
- 3W THREE WIRE

SYMBOL LEGEND

- POWER PANEL, 120/208V, 3PH, 4WIRE
- ELECTRIC MOTOR DRIVEN EQUIPMENT, HP SHOWN
- JUNCTION BOX - "H" DENOTES RANGE HOOD, "DS" DENOTES DISPOSAL, "DW" DENOTES DISHWASHER
- SM MANUAL MOTOR STARTER SWITCH WITH THERMAL OVERLOAD DEVICE, MOUNTED AT UNIT
- LIGHTING FIXTURES - CAPITAL LETTERS DENOTE TYPE AS PER LIGHTING FIXTURE SCHEDULE, LOWER CASE LETTERS INDICATE SWITCH CONTROL, DIAGONAL LINE INDICATES NIGHT LIGHT - UNSWITCHED
- DISCONNECT SWITCH - 250 VOLT - SIZE AND NUMBER OF POLES AS INDICATED ON DRAWING, PROVIDED AND INSTALLED BY E.C. - UNLESS OTHERWISE NOTED, PROVIDE FUSES WHERE RECOMMENDED BY MANUFACTURER.
- COMBINATION MOTOR STARTER/ DISCONNECT SWITCH - WITH AUXILIARY CONTACTS AND HAND-OFF-AUTO SWITCH AND RED RUN LIGHT PROVIDED AND INSTALLED BY E.C. - UNLESS OTHERWISE NOTED.
- VARIABLE FREQUENCY DRIVE - PROVIDED BY M.C., INSTALLED AND WIRED BY E.C.
- RACEWAY & WIRING OR MC CABLE RUN CONCEALED IN WALLS/CEILING.
- RACEWAY & WIRING RUN EXPOSED
- RACEWAY & WIRING RUN CONCEALED UNDER FLOOR OR BURIED 30" BELOW FINISH GRADE
- HOME RUN TO PANEL - ARROWS INDICATE QUANTITY OF CIRCUITS - NUMERALS DENOTE CIRCUIT NUMBERS
- SINGLE POLE SWITCH, 120 VOLT, 20 AMP, SPEC. GRADE, GROUNDING TYPE, MOUNT 48" AFF
- 3-3-WAY, 4-4 WAY, P-PILOT LOWER CASE LETTER