

Gawron Turgeon
ARCHITECTS
39 Black Point Road
Scarborough, Maine 04074
www.gawronturjeon.com
207-883-6307 tel 207-883-0361 fax

CPORT
CREDIT UNION

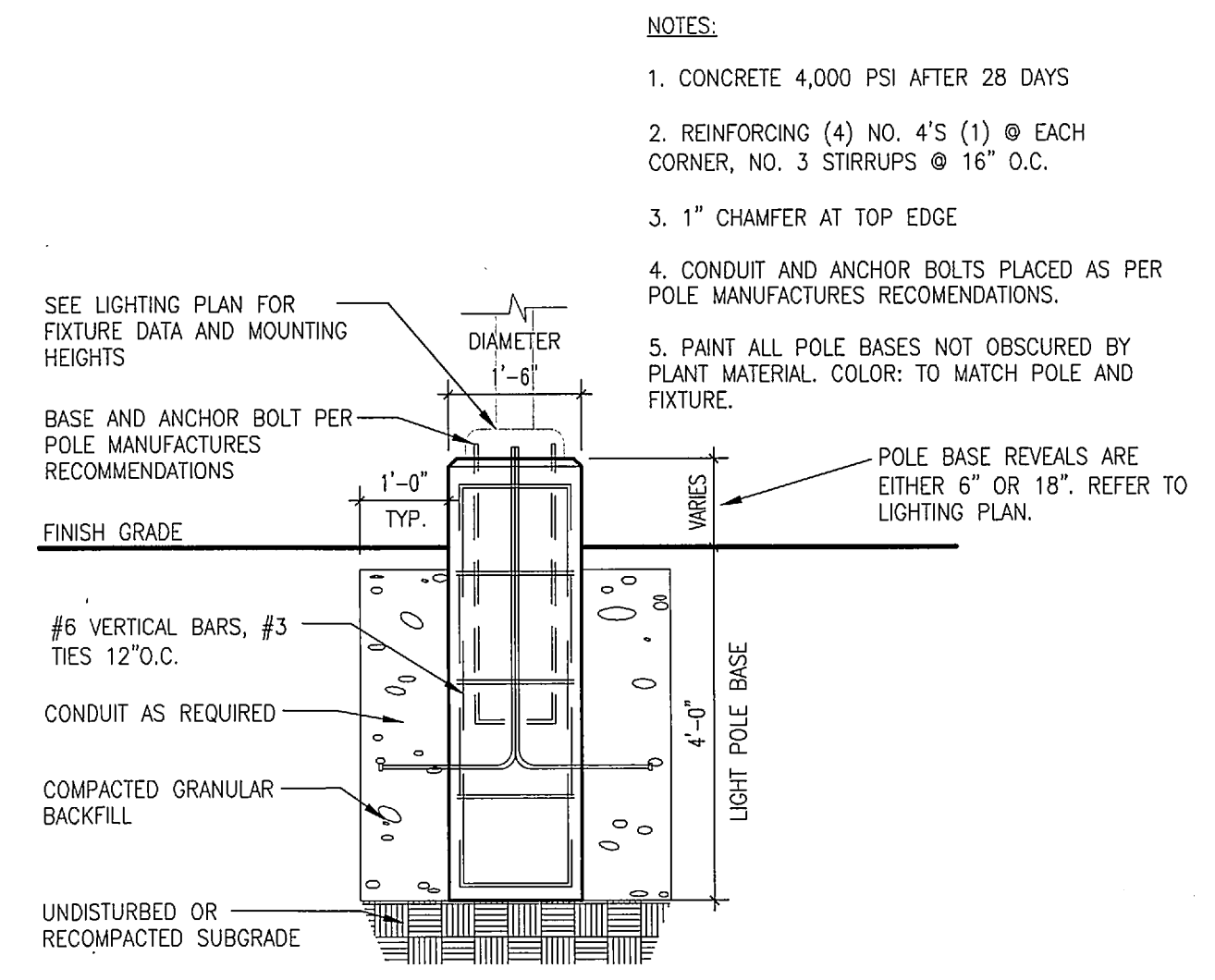
REVISIONS		
#	DATE	DESCRIPTION
1	06.17.11	PRELIM SITE PLAN REVIEW
2	07.28.11	STAFF REVIEW
3	09.27.11	PRICING

DATE:	09.27.11
PROJECT #:	030311
DRAWN BY:	KLD
CHECKED BY:	RS
DRAWING SCALE:	VARIES

SHEET TITLE
LANDSCAPE DETAILS

L103

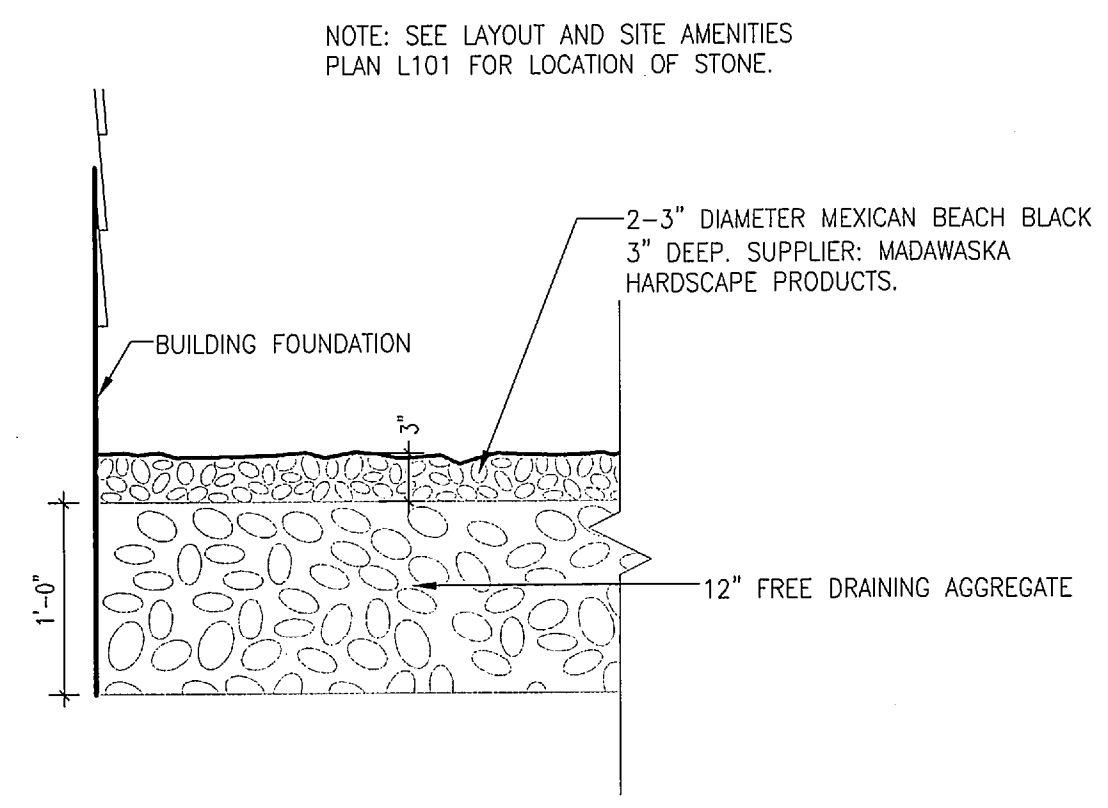
© COPYRIGHT 1985-2008
REPRODUCTION OR REUSE OF THIS DOCUMENT WITHOUT WRITTEN PERMISSION OF GAWRON TURGEON ARCHITECTS IS PROHIBITED



- NOTES:**
1. CONCRETE 4,000 PSI AFTER 28 DAYS
 2. REINFORCING (4) NO. 4'S (1) @ EACH CORNER, NO. 3 STIRRUPS @ 16" O.C.
 3. 1" CHAMFER AT TOP EDGE
 4. CONDUIT AND ANCHOR BOLTS PLACED AS PER POLE MANUFACTURER'S RECOMMENDATIONS.
 5. PAINT ALL POLE BASES NOT OBSERVED BY PLANT MATERIAL. COLOR: TO MATCH POLE AND FIXTURE.

L12 LIGHT POLE BASE SECTION

1/2" = 1'-0"



NOTE: SEE LAYOUT AND SITE AMENITIES PLAN L101 FOR LOCATION OF STONE.

F12 LANDSCAPE STONE SECTION

1" = 1'-0"

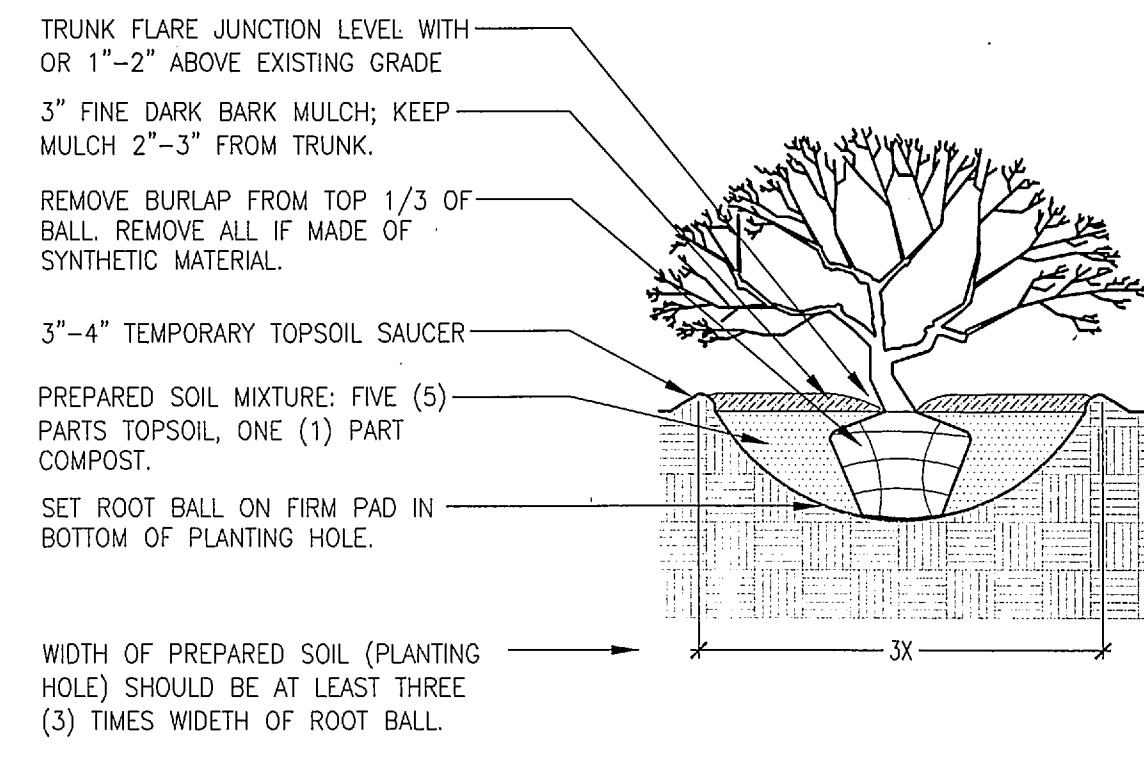
PLANTING NOTES:

1. ALL PLANTING BEDS TO RECEIVE 12" OF PREPARED SOIL MIXTURE: ALL PLANT MATERIAL - FIVE (5) PARTS TOPSOIL, ONE (1) PART COMPOST.
2. ALL DISTURBED AREAS TO RECEIVE 6" TOPSOIL AND SEED UNLESS OTHERWISE NOTED.
3. REFER TO THE PROJECT SPECIFICATIONS MANUAL FOR SOD INSTALLATION REQUIREMENTS AND SPECIFICATIONS
4. PRIOR TO PLANT INSTALLATION, LANDSCAPE CONTRACTOR SHALL MEET WITH LANDSCAPE ARCHITECT ON SITE FOR PRE-CONSTRUCTION WALKTHROUGH.
5. THE LANDSCAPE ARCHITECT SHALL APPROVE PLANT SPACING AND LAYOUT PRIOR TO PLANTING.
6. THE PLANT SCHEDULE SHALL HAVE PRECEDENCE OVER ANY CONFLICTS WITH PLANT QUANTITIES SHOWN ON THE PLAN.
7. INSTALLATION OF PLANT MATERIAL: AS SHOWN IN DETAILS. PLANTS SHALL MEET REQUIREMENTS SPECIFIED IN PLANT SCHEDULE ACCORDING TO "AMERICAN STANDARD FOR NURSERY STOCK - MAY 12, 2004".
8. LANDSCAPE CONTRACTOR SHALL STORE ALL TRANSPLANTED PLANT MATERIAL TOGETHER ON SITE IN A SHADY LOCATION AWAY FROM CONSTRUCTION DISTURBANCE. ALL TRANSPLANTED PLANT MATERIAL SHALL BE HEeled INTO MULCH OR SOIL AND WATERED NO LESS THAN TWICE PER WEEK. DAILY OR EVEN MORE FREQUENT IRRIGATION MAY BE NECESSARY IN SUMMER MONTHS OR IN TIMES OF EXTREME DROUGHT.
9. ALL PLANT MATERIAL SHALL BE INSTALLED IN MULCHED PLANT BEDS. TREES THAT ARE LOCATED IN LAWN AREA SHALL HAVE A MINIMUM 4" DIAMETER CIRCULAR MULCH BED.
10. ALL LABELS, TAGS OR OTHER FOREIGN MATERIAL SHALL BE REMOVED FROM PLANT MATERIAL LIMBS AND STEMS.
11. LANDSCAPE CONTRACTOR SHALL WATER PLANT MATERIAL SO THAT TOPSOIL IS UNIFORMLY MOIST TO A DEPTH OF 4" INCHES. FREQUENCY OF WATERING SHALL BE NO LESS THAN TWICE PER WEEK FROM INSTALLATION DATE TO SUBSTANTIAL COMPLETION. DAILY OR EVEN MORE FREQUENT IRRIGATION MAY BE NECESSARY IN SUMMER MONTHS OR IN TIMES OF EXTREME DROUGHT.
12. LANDSCAPE CONTRACTOR SHALL PROVIDE ONE (1) YEAR REPLACEMENT GUARANTEE FOR ALL NEW PLANT MATERIAL AND SHALL MAINTAIN AND WATER ALL PLANTS (INCLUDING GRASSES AND LAWN) UNTIL ACCEPTANCE.
13. PLANT BED PREPARATION: ALL PLANTING BEDS SHALL BE TILLED OR CULTIVATED TO A DEPTH OF NOT LESS THAN 18" WHERE THERE ARE CONSTRUCTION ACTIVITIES AND COMPACTED SOILS. ALL OTHER PLANTING BEDS SHALL BE CULTIVATED TO A DEPTH OF NOT LESS THAN 12".

SUBMITTALS AND SUBSTITUTIONS NOTES:

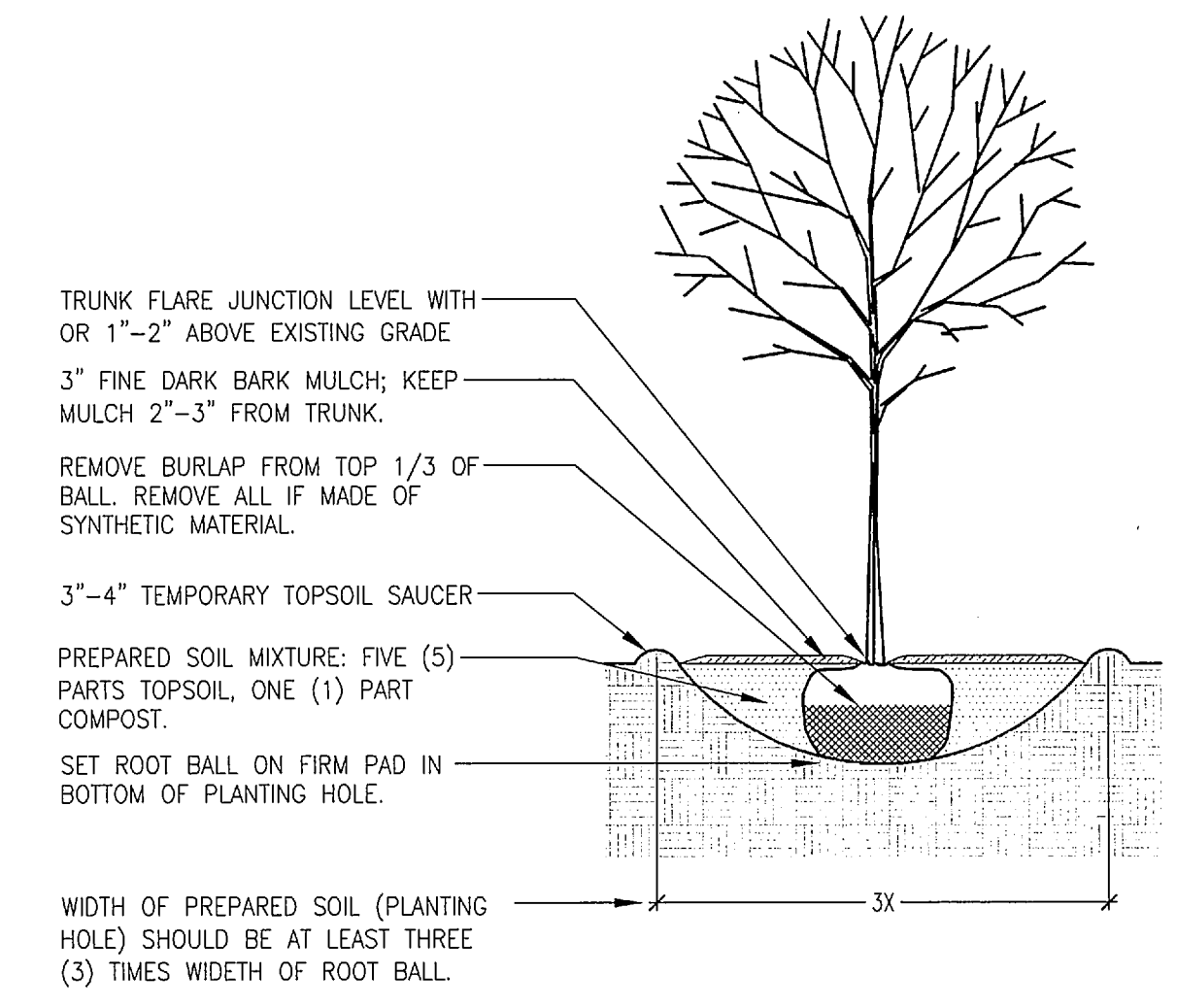
1. PLANT VARIETY SUBSTITUTIONS SHALL BE BASED ON SIMILAR CHARACTERISTICS OF THE SPECIFIED PLANT. APPROVALS SHALL BE BASED ON MATURE SIZE, COLOR, BLOOM TIMES, SHAPE, SOLAR AND SOIL PREFERENCES.
2. THE CONTRACTOR SHALL SUBMIT A PLANT LIST A MINIMUM OF 30 DAYS PRIOR TO INSTALLATION FOR APPROVAL.
3. ALL PLANT SUBSTITUTIONS SHALL BE REQUESTED IN WRITING AND APPROVED BY THE LANDSCAPE ARCHITECT.
4. THE CONTRACTOR SHALL NOT RECEIVE PAYMENT FOR ANY SUBSTITUTED PLANT MATERIAL THAT HAS NOT BEEN PRE-APPROVED.

NOT FOR CONSTRUCTION



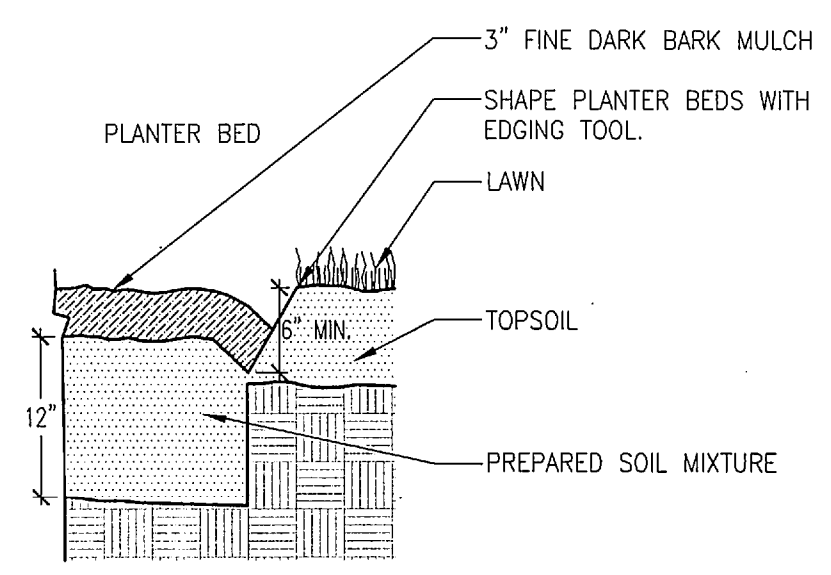
L6 SHRUB PLANTING SECTION

N.T.S.



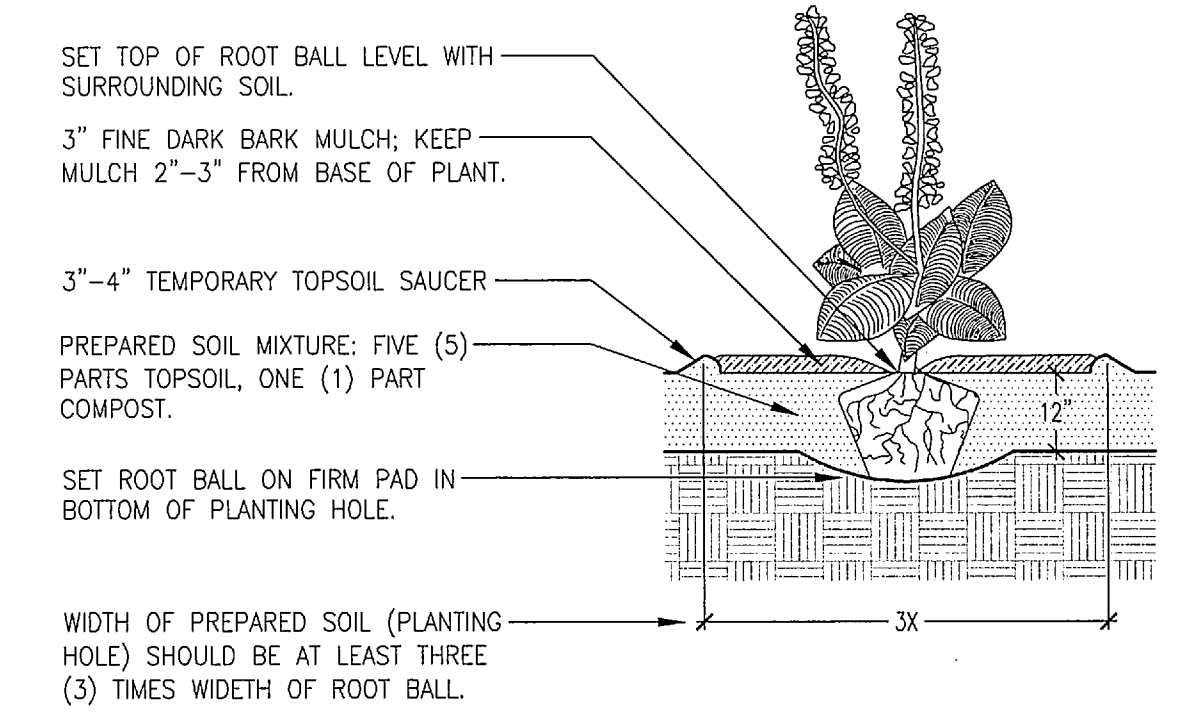
L1 DECIDUOUS TREE PLANTING SECTION

N.T.S.



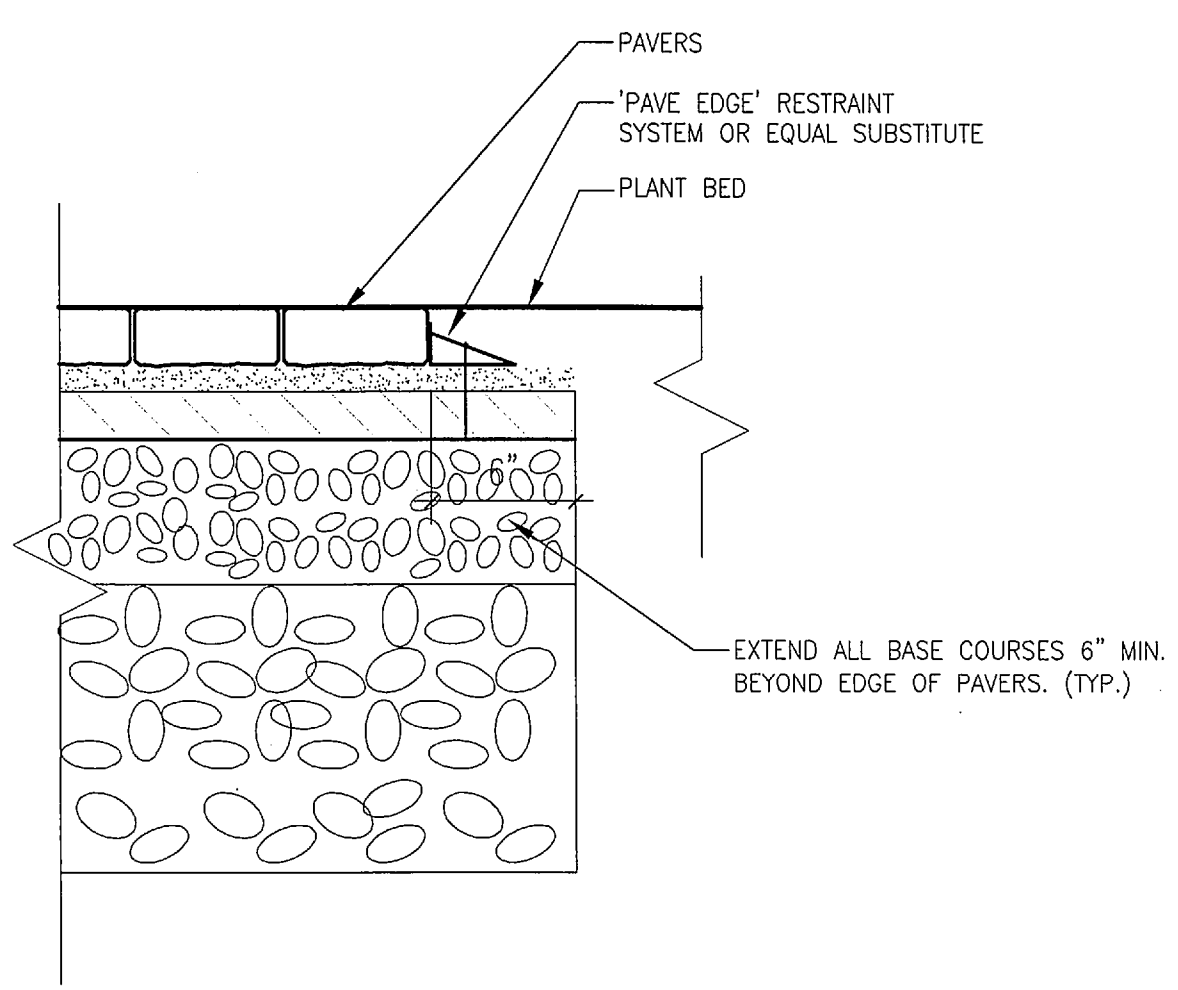
F6 PLANT BED EDGE SECTION

N.T.S.



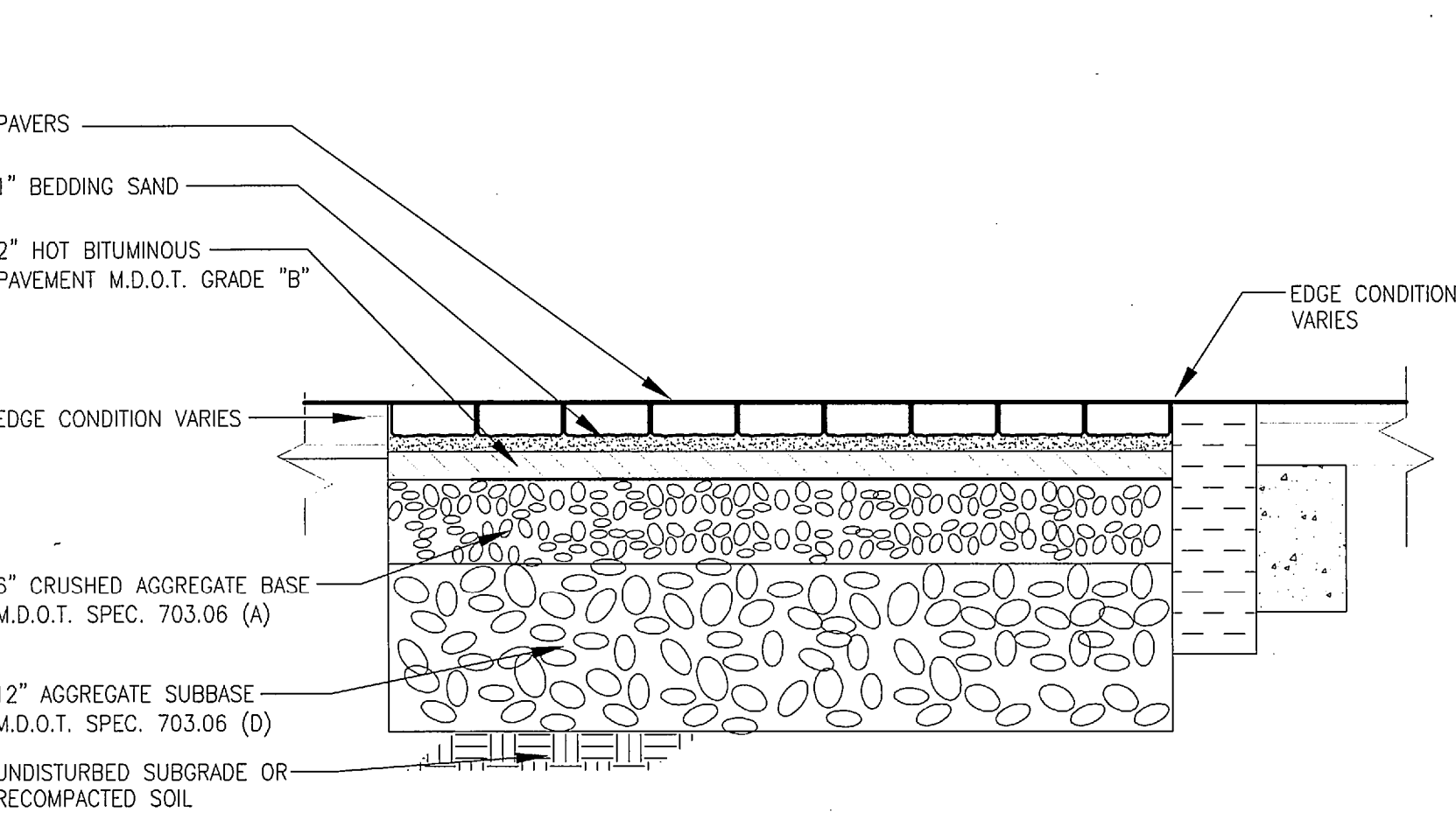
F1 PERENNIAL PLANTING SECTION

N.T.S.



A7 PAVER RESTRAINT SYSTEM SECTION

1-1/2" = 1'-0" NOTE: FOR USE WHERE PAVERS ARE NOT BOUND BY BITUMINOUS PAVEMENT OR CURBING.



A1 TYPICAL PAVER SECTION

1" = 1'-0"

A12 NOT USED

N/A

A17 PLANTING NOTES

N/A

1/20/11 10:01 AM C:\Users\Public\Desktop\110311\110311.dwg