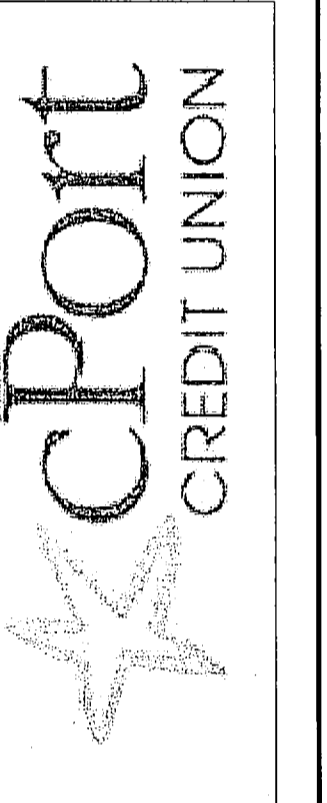


**Gawron Turgeon ARCHITECTS**  
 29 Black Point Road  
 Scarborough, Maine 04074  
 www.gawronturgeon.com  
 207-883-6307 tel 207-883-0361 fax



| # | DATE     | DESCRIPTION             |
|---|----------|-------------------------|
| 1 | 06.17.11 | PRELIM SITE PLAN REVIEW |
| 2 | 07.28.11 | STAFF REVIEW            |
| 3 | 09.27.11 | PRICING                 |

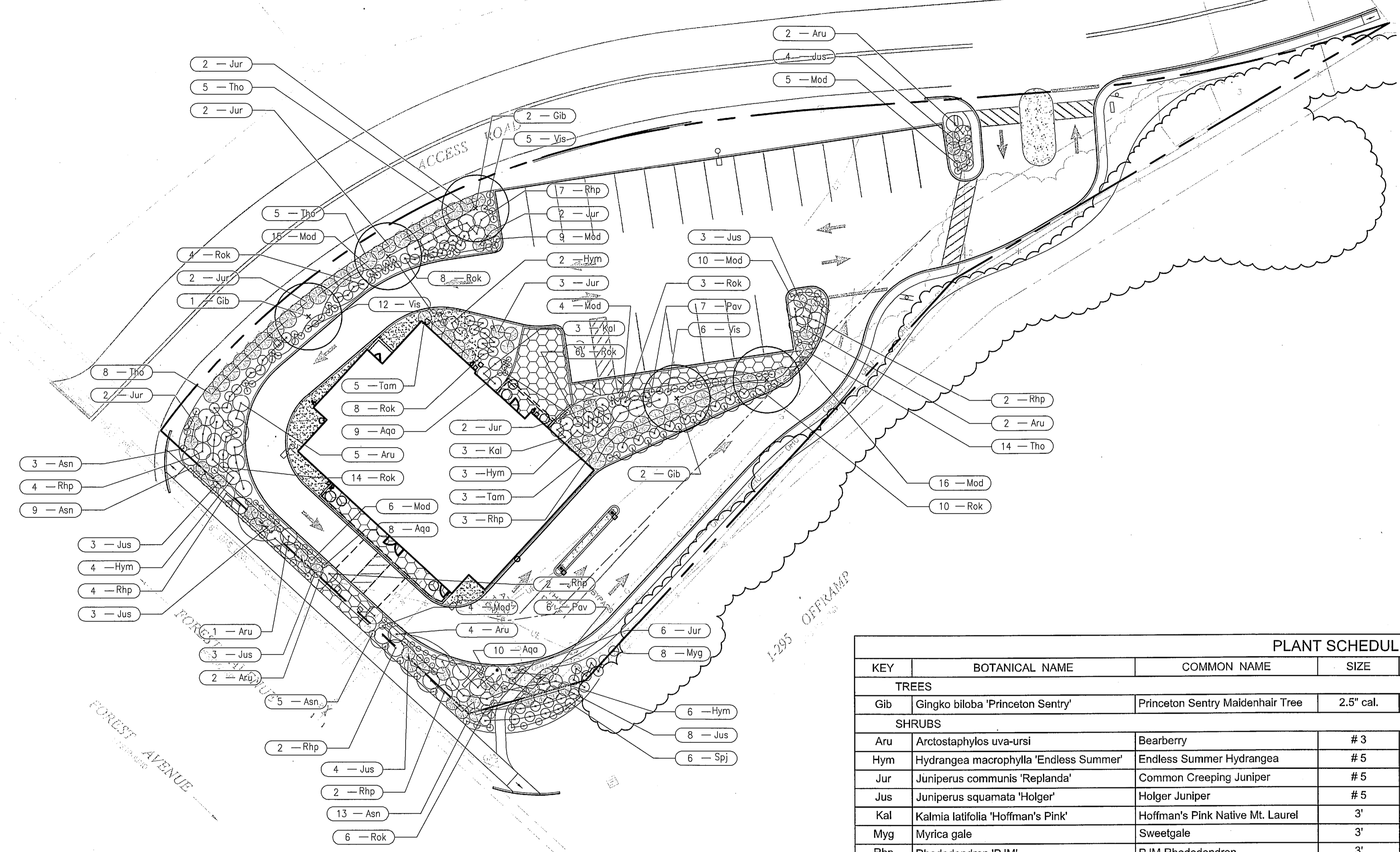
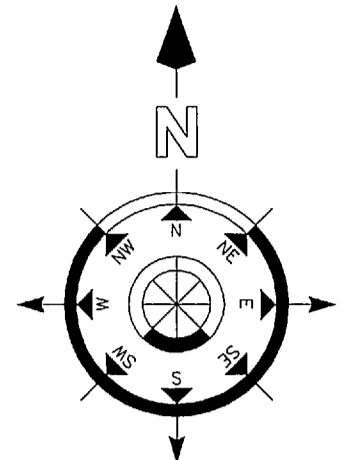
|                |          |
|----------------|----------|
| DATE:          | 09.27.11 |
| PROJECT #:     | 030311   |
| DRAWN BY:      | KLD      |
| CHECKED BY:    | RS       |
| DRAWING SCALE: | 1" = 20' |

SHEET TITLE

PLANTING PLAN

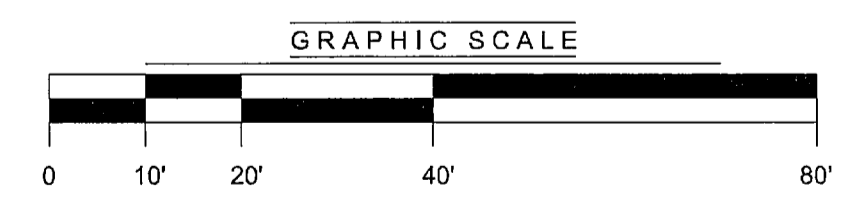
L102

© COPYRIGHT 1985-2008  
 REPRODUCTION OR REUSE OF THIS DOCUMENT WITHOUT WRITTEN PERMISSION OF GAWRON TURGEON ARCHITECTS IS PROHIBITED



| PLANT SCHEDULE    |   |                                  |           |      |           |  |
|-------------------|---|----------------------------------|-----------|------|-----------|--|
| KEY               | BOTANICAL NAME                                | COMMON NAME                      | SIZE      | QTY. | TYPE      | NOTES  |
| <b>TREES</b>      |   |                                  |           |      |           |  |
| Gib               | <i>Ginkgo biloba</i> 'Princeton Sentry'       | Princeton Sentry Maidenhair Tree | 2.5" cal. | 5    | Tree      | 70x20'; gold fall color; male                  |
| <b>SHRUBS</b>     |   |                                  |           |      |           |  |
| Aru               | <i>Arctostaphylos uva-ursi</i>                | Bearberry                        | # 3       | 16   | Shrub     | 6"x6'; broadleaf evergreen groundcover; native |
| Hym               | <i>Hydrangea macrophylla</i> 'Endless Summer' | Endless Summer Hydrangea         | # 5       | 15   | Shrub     | 4x5'; blue                                     |
| Jur               | <i>Juniperus communis</i> 'Replanda'          | Common Creeping Juniper          | # 5       | 21   | Shrub     | 1x5'; native                                   |
| Jus               | <i>Juniperus squamata</i> 'Holger'            | Holger Juniper                   | # 5       | 28   | Shrub     | 3x4'   |
| Kal               | <i>Kalmia latifolia</i> 'Hoffman's Pink'      | Hoffman's Pink Native Mt. Laurel | 3'        | 6    | Shrub     | 6x5'; pink; native                             |
| Myg               | <i>Myrica gale</i>                            | Sweetgale                        | 3'        | 8    | Shrub     | 3x3'; fragrant foliage and stems, native       |
| Rhp               | <i>Rhododendron</i> 'PJM'                     | PJM Rhododendron                 | 3'        | 26   | Shrub     | 6x6'; lavender                                 |
| Rok               | <i>Rosa</i> 'Rainbow Knockout'                | Rainbow Knockout Rose            | 2-2.5'    | 59   | Shrub     | 3x3'; coral, yellow, pink, cream               |
| Spj               | <i>Spiraea japonica</i> 'Magic Carpet'        | Magic Carpet Spirea              | 2-2.5'    | 6    | Shrub     | 3x4'; pink - summer                            |
| Tam               | <i>Taxus x media</i> 'Tauntonii'              | Taunton Yew                      | 2-2.5'    | 8    | Shrub     | 3x5'   |
| Tho               | <i>Thuja occidentalis</i> 'Woodwardii'        | Globe Arborvitae                 | 2-2.5'    | 32   | Shrub     | 6x6'; native                                   |
| <b>PERENNIALS</b> |   |                                  |           |      |           |  |
| Aqa               | <i>Aquilegia alpina</i>                       | Columbine                        | 1 gal.    | 29   | Perennial | 16"; violet blue-early summer                  |
| Asn               | <i>Aster novae-angliae</i> 'Purple Dome'      | Purple Dome New England Aster    | 1 gal.    | 30   | Perennial | 1.5x3"; deep purple - fall; native             |
| Mod               | <i>Monarda didyma</i> 'Marshalls Delight'     | Marshalls Delight Bee-Balm       | 1 gal.    | 68   | Perennial | 3'h; pink - summer; native                     |
| Pav               | <i>Panicum virgatum</i> 'Shenandoah'          | Shenandoah Switch Grass          | 1 gal.    | 13   | Perennial | 3x3'; native                                   |
| Vis               | <i>Viola sororia</i> 'Dark Freckles'          | Freckled Violet                  | 1 gal.    | 23   | Perennial | 3"h; violet - early spring; native             |

**NOTES:**  
 1. GENERAL CONTRACTOR TO PROVIDE SITE IRRIGATION. AUTOMATIC SPRINKLER SYSTEM SHALL BE IN ALL LAWNS AND PLANTER BEDS. COORDINATE WITH M.E.P. AND LANDSCAPE ARCHITECT.



A1 PLANTING PLAN

NOT FOR CONSTRUCTION

