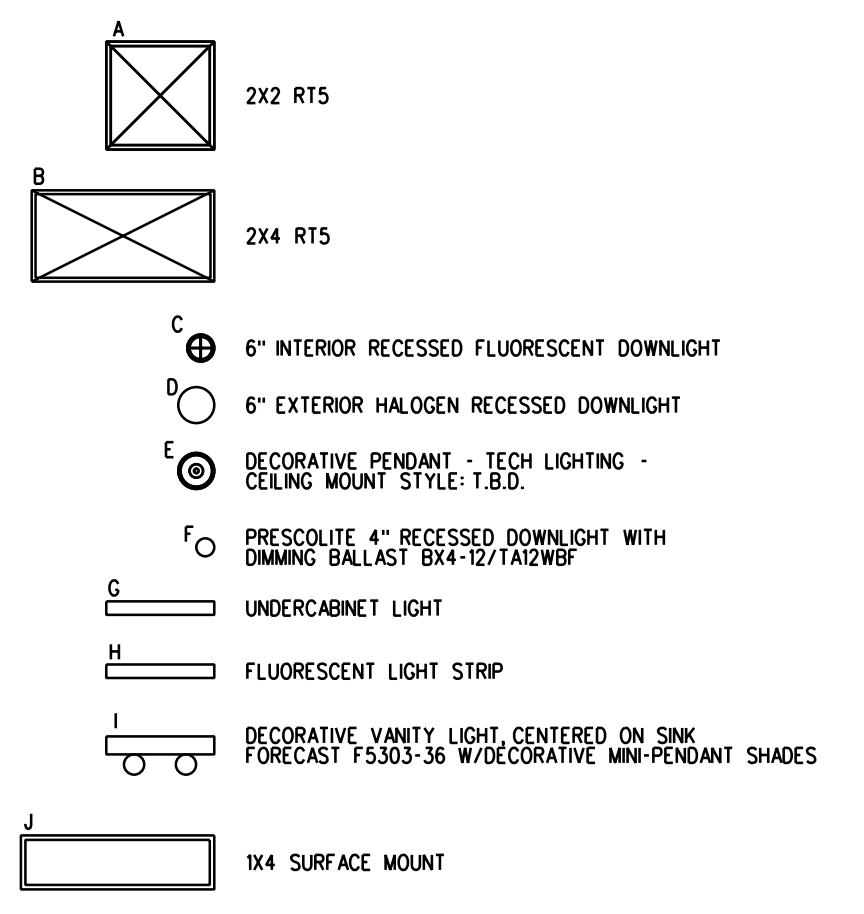


# ABBREVIATIONS

- A AMP
- AC ALTERNATING CURRENT, ABOVE COUNTER
- ADA AMERICANS WITH DISABILITIES ACT
- AF AMP FRAME
- AFCI ARC FAULT CIRCUIT INTERRUPTER
- AFF ABOVE FINISHED FLOOR
- AFG ABOVE FINISHED GRADE
- AC AMPERES INTERRUPTING CAPACITY
- AL ALUMINUM
- AMP TRIP
- ATC AUTOMATIC TEMPERATURE CONTROL
- ATS AUTOMATIC TRANSFER SWITCH
- AWG AMERICAN WIRE GAUGE
- BLDG BUILDING
- C CONDUIT
- CB CIRCUIT BREAKER
- CI CAST IRON
- CKT CIRCUIT
- E CENTERLINE
- CMP CENTRAL MAIN POWER (ELECTRIC UTILITY)
- CMU CONCRETE MASONRY UNIT
- CT CURRENT TRANSFORMER
- CONC CONCRETE
- CS CARBON STEEL
- CU COPPER
- CUH CABINET UNIT HEATER
- EC ELECTRICAL CONTRACTOR
- EF EXHAUST FAN
- ER EXISTING REMAINS IN PLACE
- ERL EXISTING RELOCATE
- ERM EXISTING REMOVE
- EUH ELECTRIC UNIT HEATER
- EWC ELECTRICAL WATER COOLER
- FACP FIRE ALARM CONTROL PANEL
- FAPS FIRE ALARM PULL STATION
- FRP FIBER REINFORCED PLASTIC
- FVNR FULL VOLTAGE, NON-REVERSING
- RVNR REDUCED VOLTAGE, NON-REVERSING
- DC DIRECT CURRENT
- GFI GROUND FAULT INTERRUPTER
- GND GROUND
- HD HIGH INTENSITY DISCHARGE
- HOA HAND-OFF-AUTOMATIC
- HP HORSEPOWER
- HPS HIGH PRESSURE SODIUM
- HZ HERTZ
- ICB INSULATED CASE CIRCUIT BREAKER
- JB JUNCTION BOX
- KAC THOUSAND AMP INTERRUPTING CAPACITY
- KMIL THOUSAND CIRCULAR MIL
- KV THOUSAND VOLTS
- KVA THOUSAND VOLT-AMPS
- KW THOUSAND WATTS (KILOWATT)
- LC LIGHTING CONTACTORS
- LCF LATERAL CONTROL PIT
- LED LIGHT EMITTING DIODE
- LP LIGHTING PANELBOARD
- LTG LIGHTING
- LSG LONG TIME, SHORT TIME, INSTANTANEOUS, GROUND FAULT CIRCUIT BREAKER TRIP FUNCTIONS AS INDICATED
- MCC MOTOR CONTROL CENTER
- MCCB MOLDED CASE CIRCUIT BREAKER
- MCB MAIN CIRCUIT BREAKER
- MDP MAIN DISTRIBUTION PANEL
- MH MANHOLE
- MLO MAIN LUGS ONLY
- MTS MANUAL TRANSFER SWITCH
- NC NORMALLY CLOSED OF NURSE CALL
- NEC NATIONAL ELECTRICAL CODE
- NFPA NATIONAL FIRE PROTECTION ASSOCIATION
- NL NIGHT LIGHT
- NO NORMALLY OPEN
- NO. NUMBER
- OL OVERLOAD
- P POLE
- PA PUBLIC ADDRESS
- PB PUSH BUTTON
- PF POWER FACTOR
- PH PHASE
- PNL PANEL
- TP1-2 TELE-POWER POLE - POLE AND CIRCUIT NUMBER AS INDICATED
- PSNH PUBLIC SERVICE OF NEW HAMPSHIRE (ELECTRIC UTILITY)
- PT POTENTIAL TRANSFORMER
- PVC POLYVINYL CHLORIDE
- RSC RIGID STEEL CONDUIT
- RTU ROOF TOP UNIT
- SF SUPPLY FAN
- SLD SINGLE LINE DIAGRAM
- SM MANUAL MOTOR STARTER SWITCH WITH THERMAL OVERLOAD DEVICE, MOUNTED AT UNIT
- SS SOLID STATE
- SWBD-1 SWITCHBOARD NUMBER AS DESIGNATED
- TC TIME CLOCK
- TS TRANSFER SWITCH
- T&B TOP AND BOTTOM
- TYP TYPICAL
- UG UNDERGROUND
- V VOLT
- VA VOLT-AMPERE
- VFD VARIABLE FREQUENCY DRIVE
- W WATT
- W/ WITH
- WP WEATHERPROOF
- XFMR TRANSFORMER
- XP EXPLOSION PROOF
- 3PH THREE PHASE
- 4W FOUR WIRE
- 3W THREE WIRE

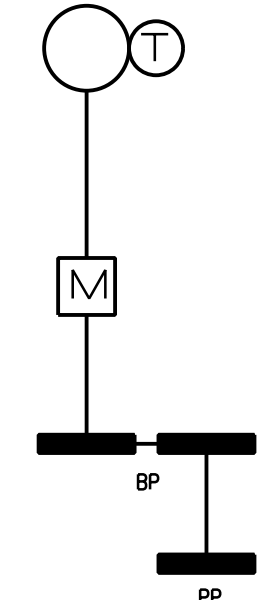
# LIGHT FIXTURE SCHEDULE



ALL LIGHTING FIXTURES SHALL BE ENERGY STAR RATED OR HAVE HIGH PERFORMANCE ELECTRONIC BALLASTS AND LAMPS TO MEET EFFICIENCY MAINE CRITERIA ALL FLUORESCENT LAMPS 3500K

FOR SITE LIGHTING REFER TO DRAWING E100.

PROVIDE PROGRAM START BALLASTS FOR OCCUPANCY SENSORS AND INSTANT START BALLASTS FOR SWITCHED LIGHTING. MIN BP-10

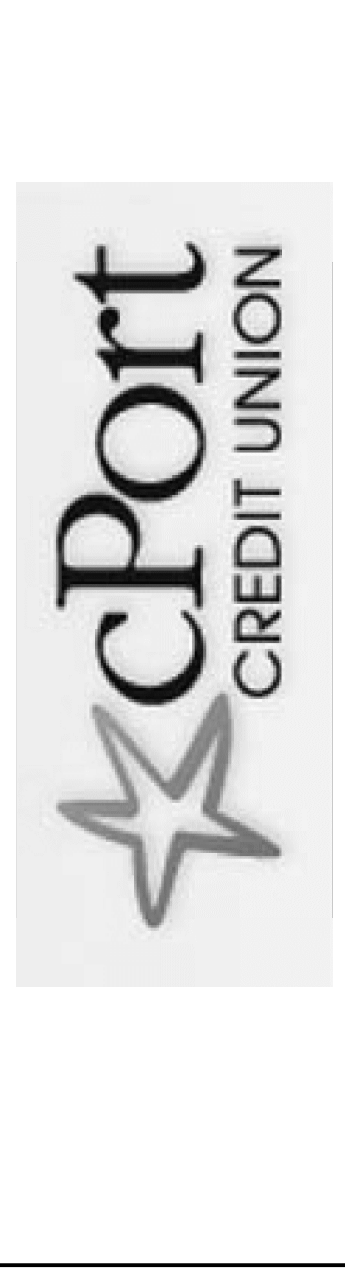
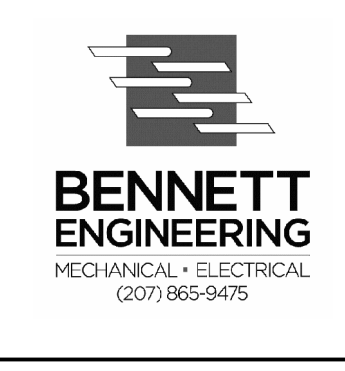


ONE-LINE

# SYMBOL LEGEND

- POWER PANEL, 120/208V, 3PHS, 4WIRE
- ELECTRIC MOTOR DRIVEN EQUIPMENT, HP SHOWN
- JUNCTION BOX - "H" DENOTES RANGE HOOD, "DS" DENOTES DISPOSAL, "DW" DENOTES DISHWASHER
- MANUAL MOTOR STARTER SWITCH WITH THERMAL OVERLOAD DEVICE, MOUNTED AT UNIT
- LIGHTING FIXTURES- CAPITAL LETTERS DENOTE TYPE AS PER LIGHTING FIXTURE SCHEDULE, LOWER CASE LETTERS INDICATE SWITCH CONTROL, DIAGONAL LINE INDICATES NIGHT LIGHT - UNSWITCHED
- DISCONNECT SWITCH - 250 VOLT- SIZE AND NUMBER OF POLES AS INDICATED ON DRAWING PROVIDED AND INSTALLED BY E.C. - UNLESS OTHERWISE NOTED, PROVIDE FUSES WHERE RECOMMENDED BY MANUFACTURER.
- COMBINATION MOTOR STARTER/ DISCONNECT SWITCH - WITH AUXILIARY CONTACTS AND HAND-OFF-AUTO SWITCH AND RED RUN LIGHT PROVIDED AND INSTALLED BY E.C. - UNLESS OTHERWISE NOTED.
- VARIABLE FREQUENCY DRIVE - PROVIDED BY M.C., INSTALLED AND WIRED BY E.C.
- RACEWAY & WIRING OR MC CABLE RUN CONCEALED IN WALLS/CEILING.
- RACEWAY & WIRING RUN EXPOSED
- RACEWAY & WIRING RUN CONCEALED UNDER FLOOR OR BURIED 30" BELOW FINISH GRADE
- HOME RUN TO PANEL- ARROWS INDICATE QUANTITY OF CIRCUITS- NUMERALS DENOTE CIRCUIT NUMBERS
- SINGLE POLE SWITCH 120 VOLT, 20 AMP, SPEC. GRADE, GROUNDING TYPE, MOUNT 48" AFF, 3-3-WAY, 4-4 WAY, P-PILOT LOWER CASE LETTER INDICATES FIXTURE OR CONTROLLED LOAD. PILOT LIGHT SWITCHES SHALL BE PROVIDED W/ ENGRAVED
- BURNER SAFETY SWITCH - PROVIDE WITH RED PLATE - MOUNTED 72" AFF
- SELF CONTAINED EMERGENCY LIGHTING UNIT, W/2 HEADS DUAL-LITE #LZ2 - 10 WATTS FOR 90 MINUTES, 6V D.C. CVSDI IN CAR WASH AREA
- CSHSW0605 AT DOORS (EXTERIOR)
- DUAL-LITE "CVSI" WITH REMOTE EXT. HEADS (2)
- EXIT LIGHT FIXTURE - UNSWITCHED - SEE LIGHTING FIXTURE SCHEDULE
- TEMPERATURE CONTROL PANEL - PROVIDED BY M.C. WIRED BY E.C.
- DUPLEX RECEPTACLE- 20A, 125V SPEC GRADE GROUNDING TYPE, TAMPER PROOF AND MATCHING PLATE - MOUNT 18" AFF. "R" DENOTES REFRIGERATOR, "D" DENOTES DOUBLE DUPLEX
- DUPLEX RECEPTACLE- 20A, 125V SPEC GRADE GROUNDING TYPE, TAMPER PROOF AND MATCHING PLATE - MOUNT 18" AFF. BOTTOM RECEPTACLE SWITCHED
- DUPLEX RECEPTACLE- GROUND FAULT OUTLET 20A, 125V- TAMPER PROOF WITH MATCHING PLATE FURNISHED W/ OUTLET, FLUSH MOUNTED 45" AFF EXCEPT AS NOTED.
- DUPLEX RECEPTACLE- 15A, 125V SPEC. GRADE GROUNDING TYPE - FLUSH FLOOR MOUNTED.
- RANGE OUTLET 50 AMP, 250 VOLT, GROUNDING TYPE FLUSH MOUNTED 18" AFF
- DRYER OUTLET 30 AMP, 250 VOLT, GROUNDING TYPE FLUSH MOUNTED 18" AFF
- FIRE ALARM CONTROL PANEL
- FIRE ALARM AUDIO/VISUAL, MOUNT 6'-8" AFF - NUMERAL DENOTES CANDELA RATING "MH" DENOTES MINIHORN, NO DESIGNATION EQUALS A 15cd.
- FIRE ALARM VISUAL STROBE ONLY - FLUSH MOUNT 6'-8" AFF NUMERALS DENOTE CANDELA RATINGS.
- SYSTEM CONNECTED FIXED TEMPERATURE HEAT DETECTOR
- SYSTEM CONNECTED SMOKE DETECTOR, PHOTOELECTRIC TYPE- "ER" - ELEV. RECALL
- SYSTEM CONNECTED SMOKE DETECTOR, PHOTOELECTRIC TYPE- W/ SOUNDER BASE- "SB" DENOTES SOUNDER BASE.
- DUCT SMOKE DETECTOR & TEST STATION
- FIRE ALARM PULL STATION - MOUNT 48" AFF
- CABLE TV JUNCTION BOX "CTV" - SIZE AS REQUIRED BY CABLE TV CO.
- TV OUTLET LOCATION - CABLE AND JACKS BY E.C.
- TELEPHONE/DATA DUAL JACK LOCATION MOUNT 18" AFF - TWO CAT 5E CABLES BACK TO TBB.
- TELEPHONE JACK LOCATION MOUNT 18" AFF - ONE CAT 5E CABLE BACK TO TBB.
- PHOTOCELL
- LIGHTING CONTACTOR
- TIMECLOCK
- PUSHBUTTON FOR ELECTRICALLY OPERATED DOOR - FURN. W/ DOOR OPERATOR - WIRED BY E.C.
- DOOR PUSHBUTTON
- INTERCOM PANEL IN UNIT
- DOOR ELECTRIC STRIKE
- INTERCOM PANEL AT RECEPTION
- SPRINKLER SYSTEM FLOW SWITCH
- SPRINKLER SYSTEM TAMPER SWITCH
- MOTION SENSOR (WATTSTOPPER OR EQUAL)
- CORRIDORS: WT-2255 SENSOR & B120E-P POWER PACK
- OTHER COMMON SPACES: WT-605 SENSOR & B120E-P POWER PACK
- SMOKE DAMPER

PROGRESS PRINT NOT FOR CONSTRUCTION



REVISIONS		
#	DATE	DESCRIPTION
1	8/19/11	Revised 90% Review Set

DATE:	08.19.11
PROJECT #:	090609
DRAWN BY:	twg
CHECKED BY:	....
DRAWING SCALE:	NONE

SHEET TITLE  
ABBREVIATIONS, SYMBOL LEGEND, LIGHT FIXTURE SCHEDULE AND ONE-LINE

E400

© COPYRIGHT 1985-2011 REPRODUCTION OR USE OF THIS DOCUMENT WITHOUT WRITTEN PERMISSION OF GAWRON TURGEON ARCHITECTS IS PROHIBITED.