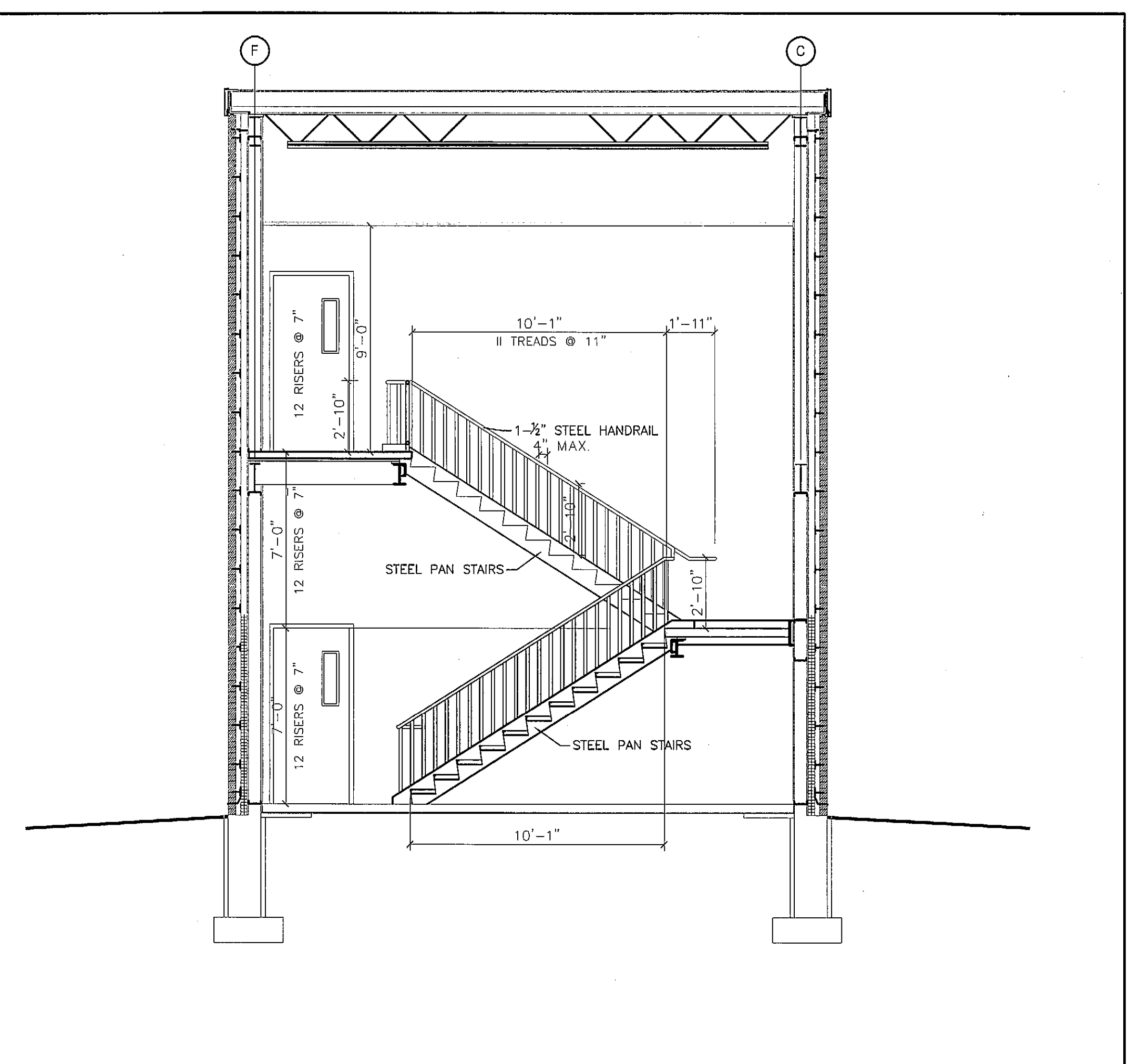


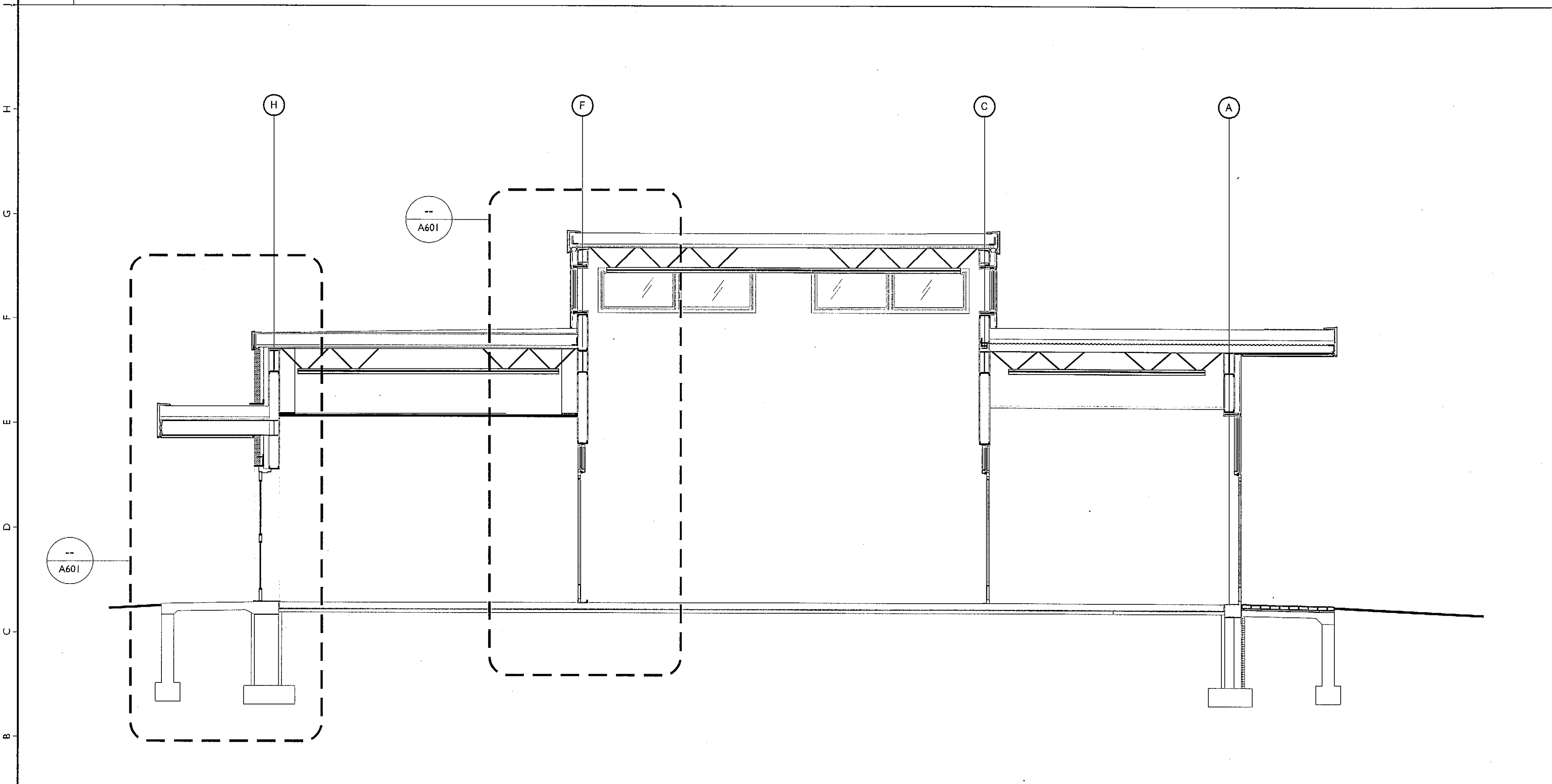
J1 BUILDING SECTION

1/4"=1'-0"



J14 BUILDING SECTION

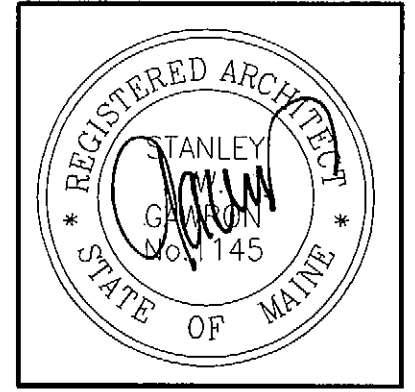
1/4"=1'-0"



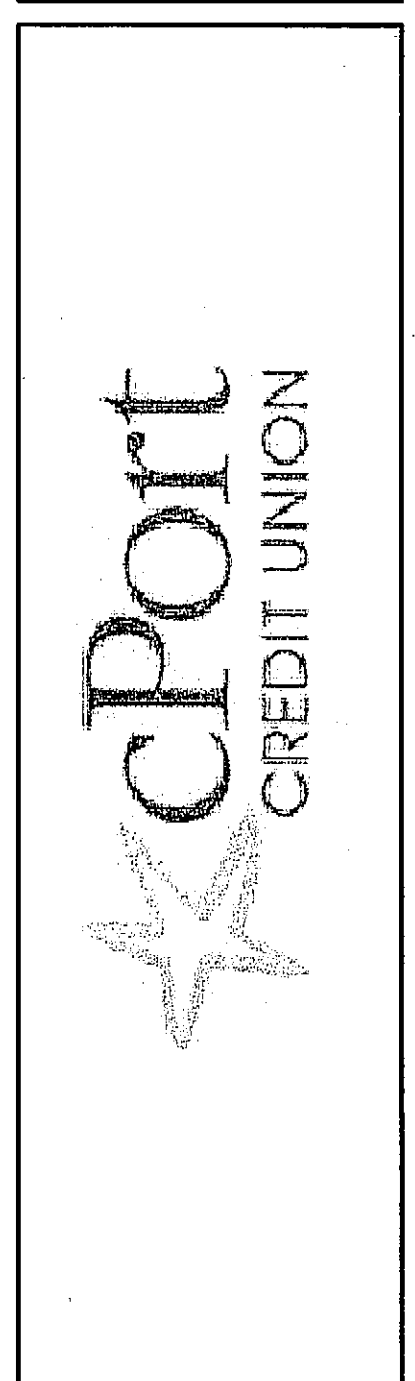
A1 BUILDING SECTION

1/4"=1'-0"

A14 NOTES



**Gawron
Turgeon
ARCHITECTS**
29 Black Point Road
Scarborough, Maine 04074
www.gawronturgeon.com
207-883-6307 ext. 207-883-0361 fax



REVISIONS		
#	DATE	DESCRIPTION
1	10/05/11	ISSUED FOR PERMITTING ONLY

DATE:	10-05-11
PROJECT #:	030311
DRAWN BY:	DLP
CHECKED BY:	SWG
DRAWING SCALE:	1/4"=1'-0"

SHEET TITLE
BUILDING SECTIONS
NOTES

A501

© COPYRIGHT 1985-2008
REPRODUCTION OR USE OF THIS
DOCUMENT WITHOUT WRITTEN
PERMISSION OF GAWRON TURGEON
ARCHITECTS IS PROHIBITED