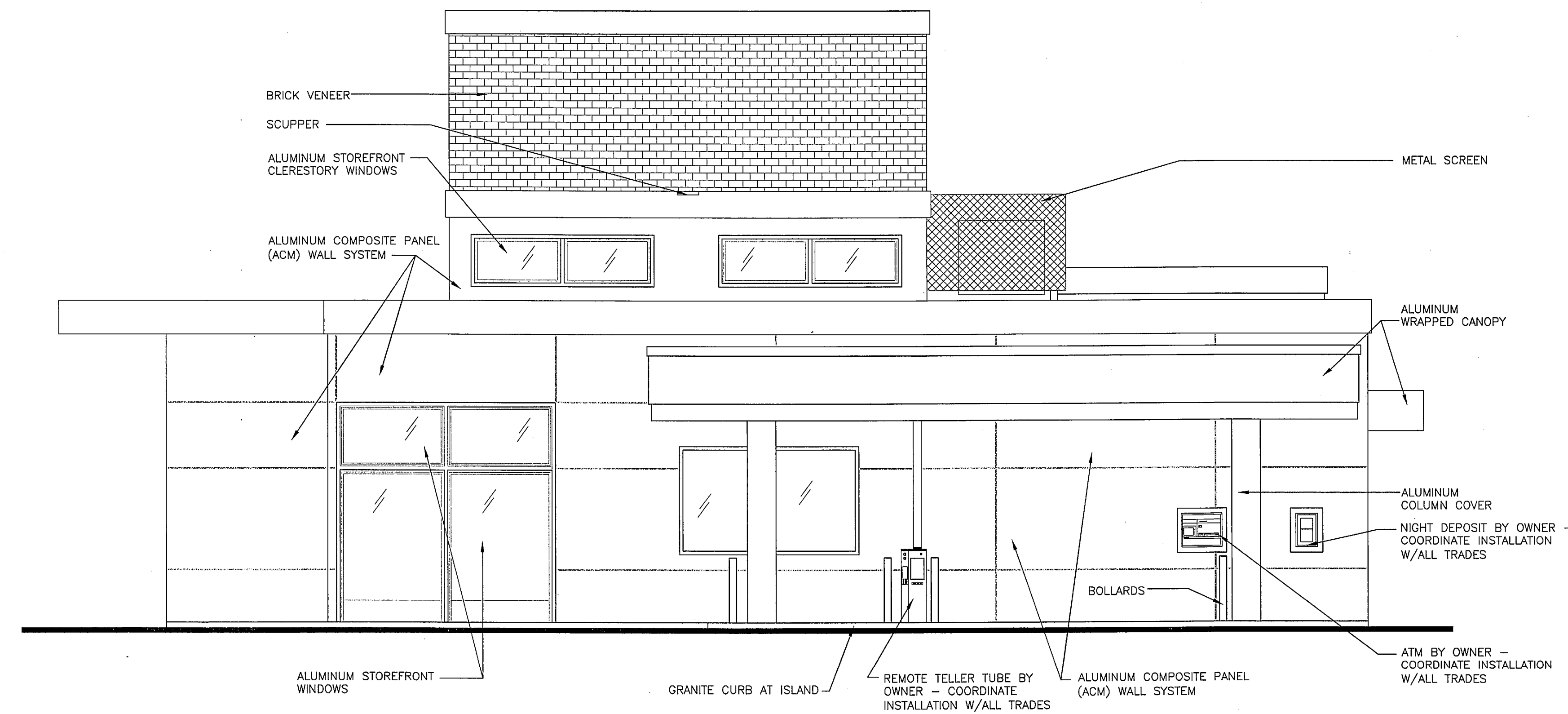
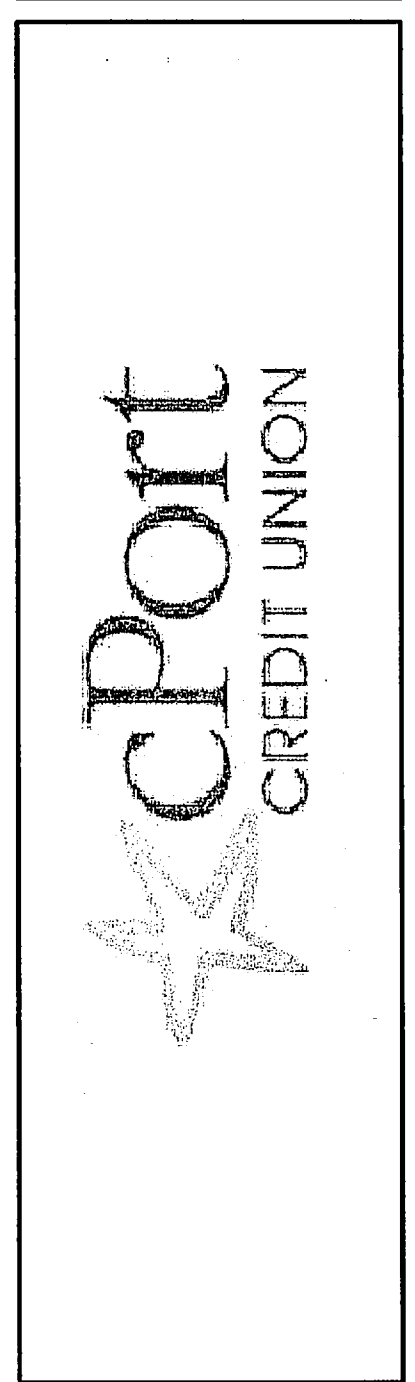
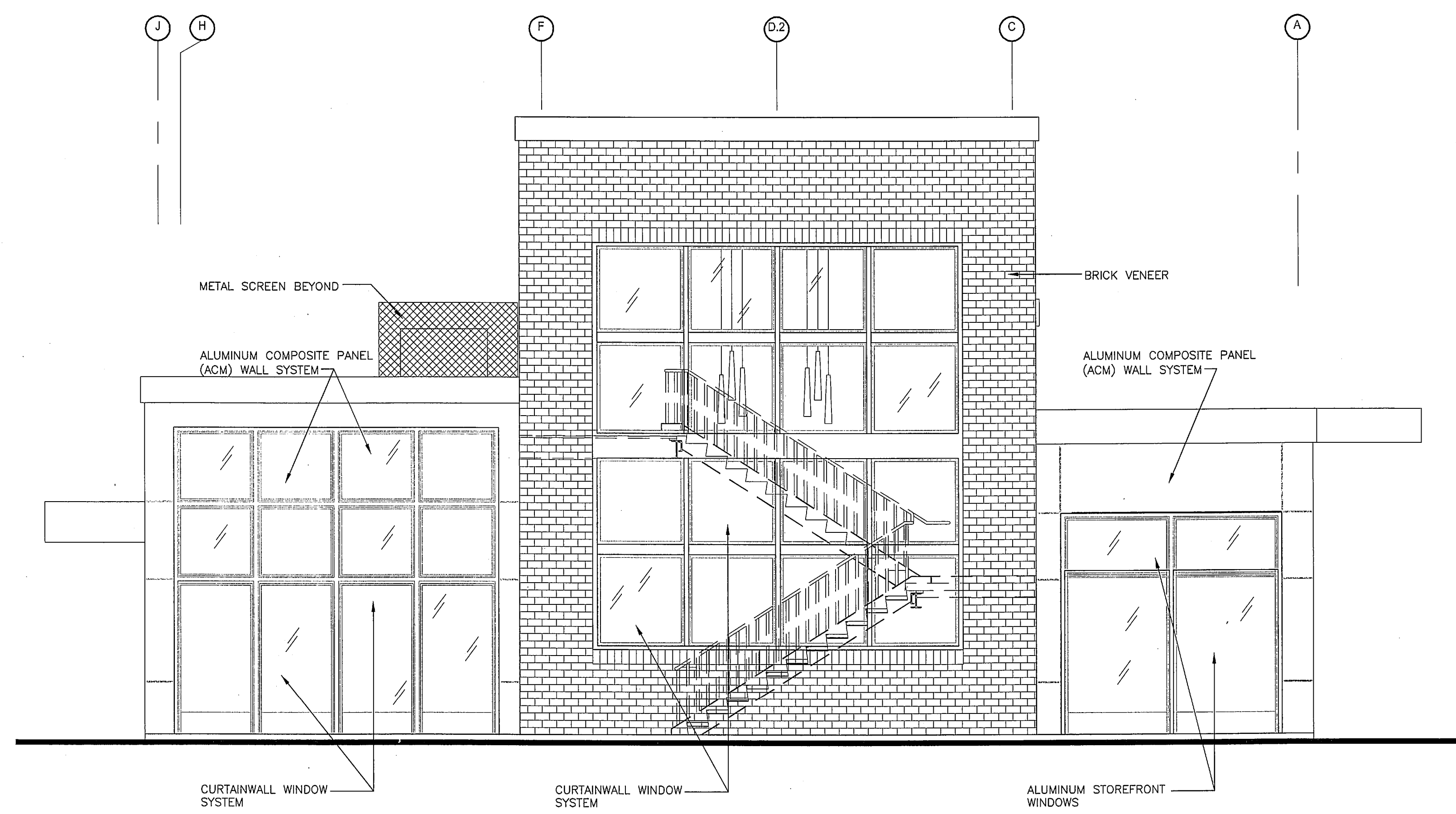


**Gawron Turgeon ARCHITECTS**  
 29 Black Point Road  
 Scarborough, Maine 04074  
 www.gawronturgeon.com  
 207-883-6307 tel 207-883-0361 fax



**J1 DRIVE-THRU ELEVATION**

1/4"=1'-0"



**A1 ACCESS ROAD ELEVATION**

1/4"=1'-0"

REVISIONS		
#	DATE	DESCRIPTION
1	10/05/11	ISSUED FOR PERMITTING ONLY

DATE	10-05-11
PROJECT #	030311
DRAWN BY:	DLP
CHECKED BY:	SWG
DRAWING SCALE	1/4"=1'-0"

**SHEET TITLE**  
 EXTERIOR ELEVATIONS  
 NOTES

**A401**

© COPYRIGHT 1985-2008  
 REPRODUCTION OR USE OF THIS  
 DOCUMENT WITHOUT WRITTEN  
 PERMISSION OF GAWRON TURGEON  
 ARCHITECTS IS PROHIBITED.