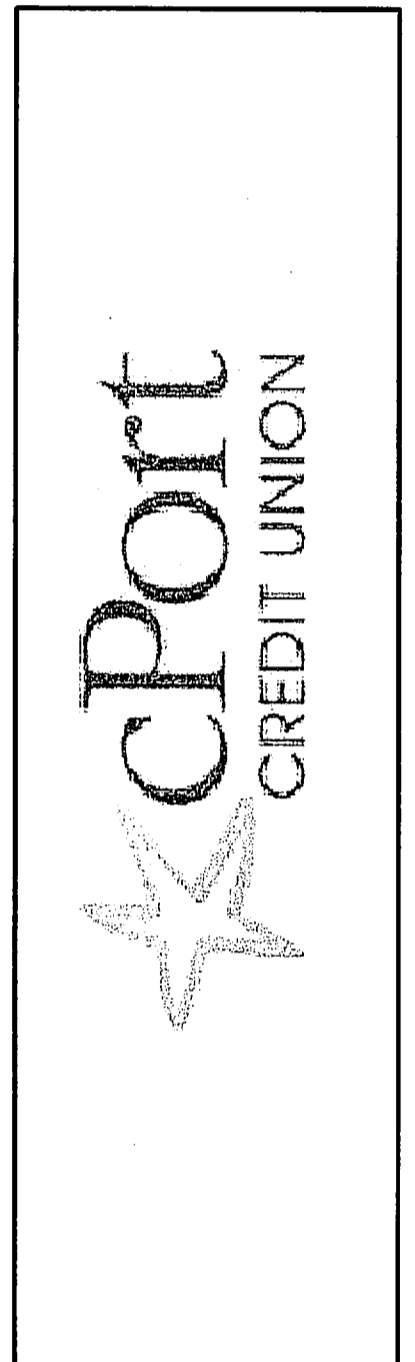


Gawron Turgeon ARCHITECTS
 29 Black Point Road
 Scarborough, Maine 04074
 www.gawronturgeon.com
 207-883-6307 ext. 207-883-6361 fax



- LIGHTING LEGEND**
- A 2x2 RT5
 - B 2x4 RT5
 - C 6" INTERIOR RECESSED FLUORESCENT DOWNLIGHT
 - D 6" EXTERIOR HALOGEN RECESSED DOWNLIGHT
 - E DECORATIVE PENDANT - TECH LIGHTING - CEILING MOUNT STYLE: T.B.D.
 - F PRESCOLITE 4" RECESSED DOWNLIGHT WITH DIMMING BALLAST BX4-12/TA12WBF
 - G UNDERCABINET LIGHT
 - H FLUORESCENT LIGHT STRIP
 - I DECORATIVE VANITY LIGHT, CENTERED ON SINK FORECAST F5303-36 W/DECORATIVE MINI-PENDANT SHADES
 - J 1x4 SURFACE MOUNT
 - K 7 1/2"Wx2 1/2"Hx12"L INDIRECT/OPEN LIGHT W/ SPECULAR, "PEERLESS" 7CRM2-2-54TSHO-SPR* 3 LAMP - DOUBLE SWITCH FIXTURE

- ACT1- ARMSTRONG CEILINGS, OPTIMA OPEN PLAN #3159 24"x24"x1-1/2"
- ACT2- ARMSTRONG CEILINGS, DUNE #1774 ANGLED TEGULAR 24x24x8"
- ACT3- ARMSTRONG CEILINGS, SOUNDSCAPES ACOUSTICAL CANOPY #6258 HILL CANOPY (46-1/2" X 75" X 1-1/4")

- NOTES:**
1. INTERIOR FIXTURE LEGEND FOR DESIGN INTENT ONLY. REFER TO ELECTRICAL DRAWINGS FOR LIGHT FIXTURE TYPES AND CIRCUITING.
 2. MECHANICAL SUBCONTRACTOR TO VERIFY SIZE AND LOCATION OF ANY MECHANICAL REGISTERS WITH ARCHITECT PRIOR TO CONSTRUCTION. LIGHTING LOCATIONS SHALL TAKE PRECEDENCE.
 3. SWITCH ALL OFFICES INDEPENDENTLY. DOUBLE SWITCH OFFICE MANAGERS OFFICE AND CONFERENCE ROOM.
 4. SWITCH TELLER WINDOW AND DRIVE-THRU TELLER INDEPENDENTLY AND DOUBLE SWITCH LAMPS OF 2x2 RT5 FIXTURES.
 5. INDEPENDENTLY SWITCH DECORATIVE WALL LIGHTS LOCATED IN LOBBY AREA
 6. GENERAL CONTRACTOR TO LAYOUT THE LOCATION OF CIRCULAR PARTITIONS & SOFFITS BY MARKING-UP ON THE CONC. FLOOR FOR ARCHITECTS REVIEW AND APPROVAL PRIOR TO CONSTRUCTION.
 7. PROVIDE POWER & LIGHTING TO SAFE.
 8. PROVIDE CABLE MANAGEMENT TRAY AT TELLER LINE.
 9. PROVIDE (1) QUAD OUTLET PER TELLER STATION.
 10. ELECTRICAL CONTRACTOR SHALL COORDINATE OWNER SUPPLIED TELEPHONE & DATA BOXES WITH LOCATIONS OF OUTLETS.
 11. PROVIDE A LIGHT IN THE CUPOLA ON A TIMECLOCK/PHOTOCELL.

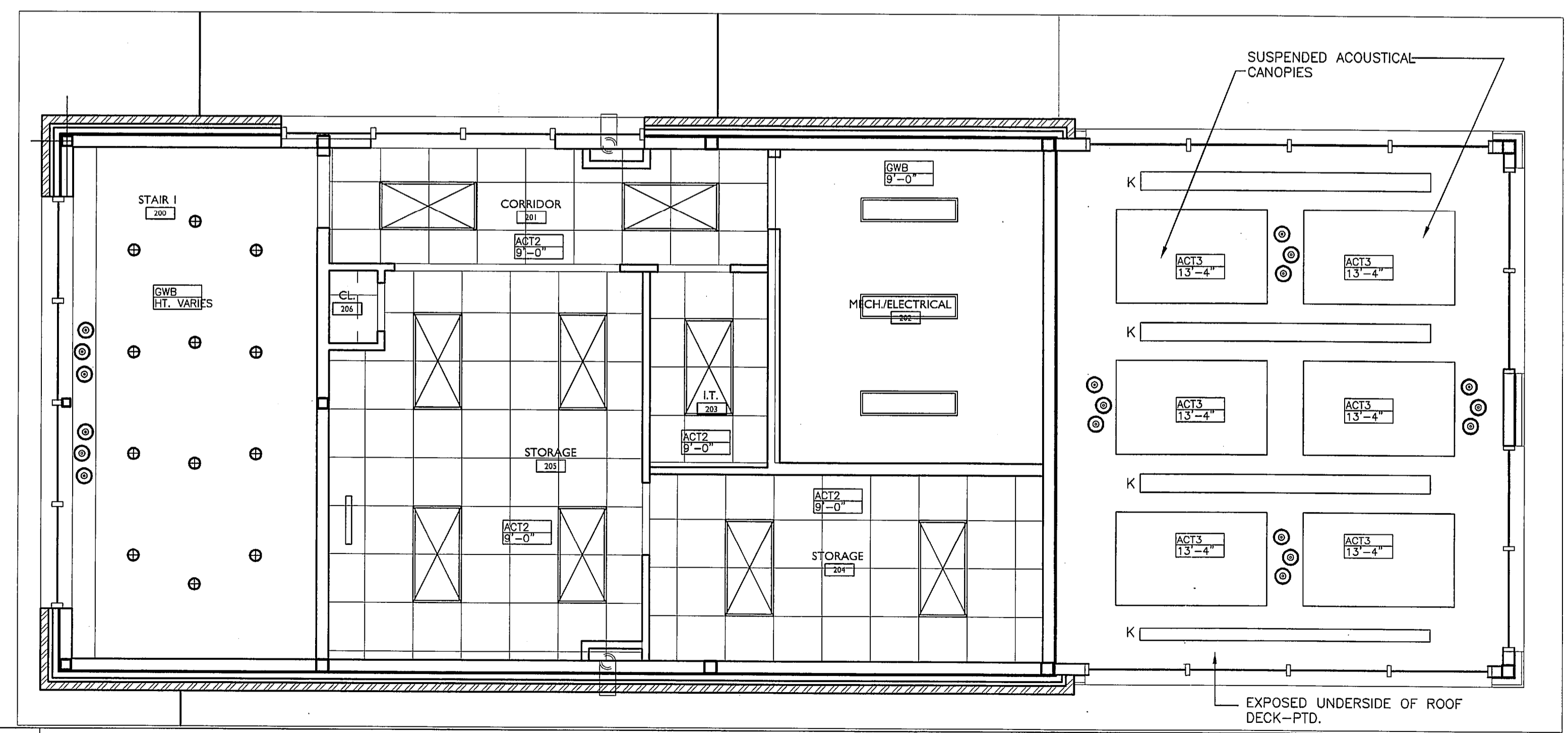
REVISIONS		
#	DATE	DESCRIPTION
1	10/05/11	ISSUED FOR PERMITTING ONLY

DATE:	10-05-11
PROJECT #:	030311
DRAWN BY:	DLP
CHECKED BY:	SWG
DRAWING SCALE:	1/4"=1'-0"

SHEET TITLE
 SECOND FLOOR REFLECTED CEILING PLAN

A301

© COPYRIGHT 1985-2008
 REPRODUCTION OR USE OF THIS DOCUMENT WITHOUT WRITTEN PERMISSION OF GAWRON TURGEON ARCHITECTS IS PROHIBITED.



A1 SECOND FLOOR REFLECTED CEILING PLAN

A17 LEGEND