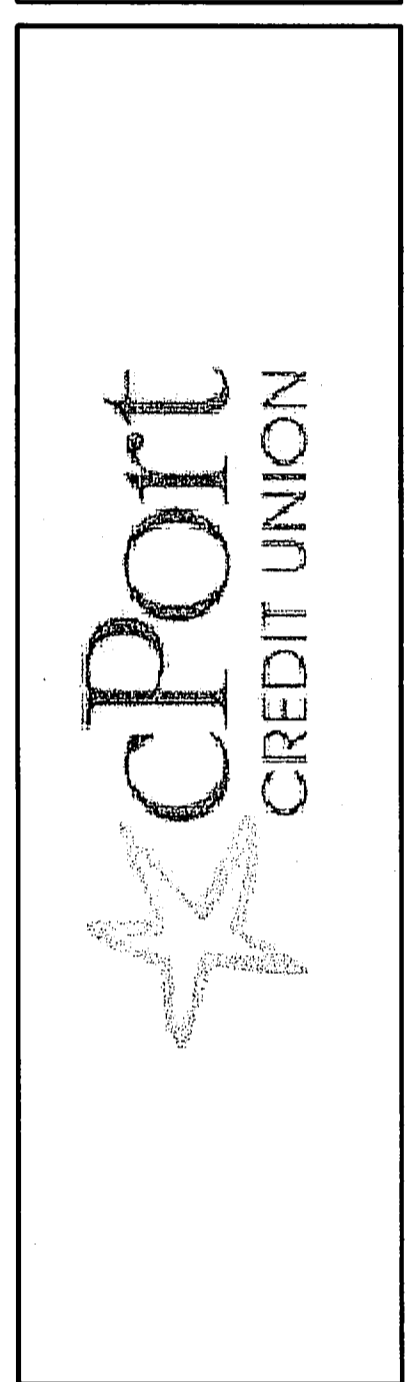


Gawron Turgeon ARCHITECTS
 29 Black Point Road
 Scarborough, Maine 04074
 www.gawronturgeon.com
 207-883-4307 tel. 207-883-0361 fax



REVISIONS		
#	DATE	DESCRIPTION
1	10/05/11	ISSUED FOR PERMITTING ONLY

DATE:	10-05-11
PROJECT #:	030311
DRAWN BY:	DLP
CHECKED BY:	SWG
DRAWING SCALE:	1/4"=1'-0"

SHEET TITLE
 FIRST FLOOR REFLECTED CEILING PLAN
 LEGEND

A300

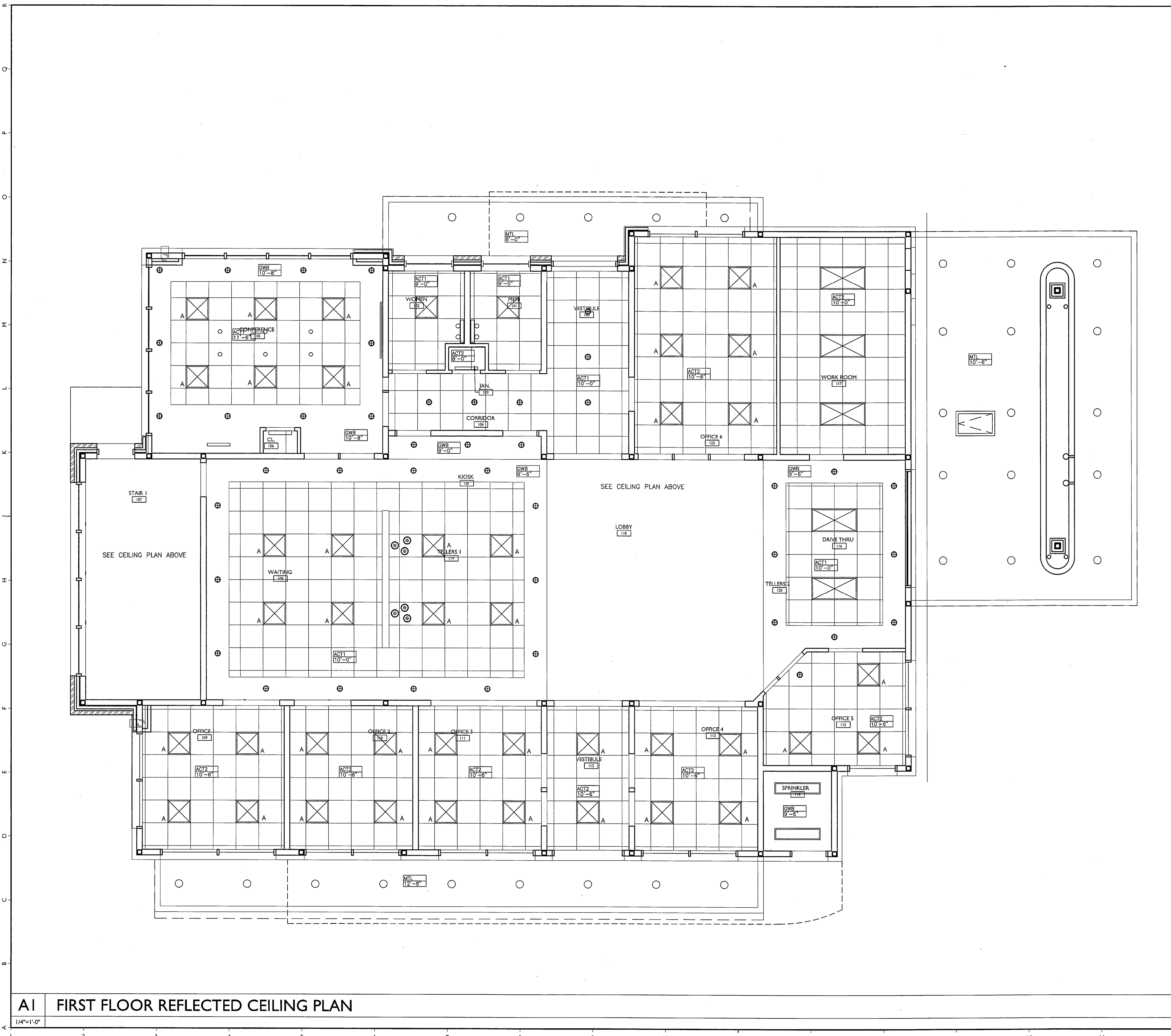
© COPYRIGHT 1985-2008
 REPRODUCTION OR USE OF THIS DOCUMENT WITHOUT WRITTEN PERMISSION OF GAWRON TURGEON ARCHITECTS IS PROHIBITED

LIGHTING LEGEND

- 2X2 RT5
- 2X4 RT5
- 6" INTERIOR RECESSED FLUORESCENT DOWNLIGHT
- 6" EXTERIOR HALOGEN RECESSED DOWNLIGHT
- DECORATIVE PENDANT - TECH LIGHTING - CEILING MOUNT STYLE: T.B.D.
- PRESCOLITE 4" RECESSED DOWNLIGHT WITH DIMMING BALLAST BX4-12/TA12WB
- UNDERCABINET LIGHT
- FLUORESCENT LIGHT STRIP
- DECORATIVE VANITY LIGHT, CENTERED ON SINK FORECAST F5303-36 W/DECORATIVE MINI-PENDANT SHADES
- 1X4 SURFACE MOUNT
- 7 1/2"Wx2 1/2"Hx12"L INDIRECT/OPEN LIGHT W/ SPECULAR, "PEERLESS" 7CRM2-2-54T5HO-SPR* 3 LAMP - DOUBLE SWITCH FIXTURE

ACT1- ARMSTRONG CEILINGS, OPTIMA OPEN PLAN #3159 24"x24"x1-1/2"
 ACT2- ARMSTRONG CEILINGS, DUNE #1774 ANGLED TEGULAR 24x24x8"
 ACT3- ARMSTRONG CEILINGS, SOUNDSCAPES ACOUSTICAL CANOPY #6258 HILL CANOPY (46-1/2" X 75" X 1-1/4")

- NOTES:**
- INTERIOR FIXTURE LEGEND FOR DESIGN INTENT ONLY. REFER TO ELECTRICAL DRAWINGS FOR LIGHT FIXTURE TYPES AND CIRCUITING.
 - MECHANICAL SUBCONTRACTOR TO VERIFY SIZE AND LOCATION OF ANY MECHANICAL REGISTERS WITH ARCHITECT PRIOR TO CONSTRUCTION. LIGHTING LOCATIONS SHALL TAKE PRECEDENCE.
 - SWITCH ALL OFFICES INDEPENDENTLY. DOUBLE SWITCH OFFICE MANAGERS OFFICE AND CONFERENCE ROOM.
 - SWITCH TELLER WINDOW AND DRIVE-THRU TELLER INDEPENDENTLY AND DOUBLE SWITCH LAMPS OF 2x2 RT5 FIXTURES.
 - INDEPENDENTLY SWITCH DECORATIVE WALL LIGHTS LOCATED IN LOBBY AREA
 - GENERAL CONTRACTOR TO LAYOUT THE LOCATION OF CIRCULAR PARTITIONS & SOFFITS BY MARKING-UP ON THE CONC. FLOOR FOR ARCHITECTS REVIEW AND APPROVAL PRIOR TO CONSTRUCTION.
 - PROVIDE POWER & LIGHTING TO SAFE.
 - PROVIDE CABLE MANAGEMENT TRAY AT TELLER LINE.
 - PROVIDE (1) QUAD OUTLET PER TELLER STATION.
 - ELECTRICAL CONTRACTOR SHALL COORDINATE OWNER SUPPLIED TELEPHONE & DATA BOXES WITH LOCATIONS OF OUTLETS.
 - PROVIDE A LIGHT IN THE CUPOLA ON A TIMECLOCK/PHOTOCELL.



A1 FIRST FLOOR REFLECTED CEILING PLAN

A17 LEGEND