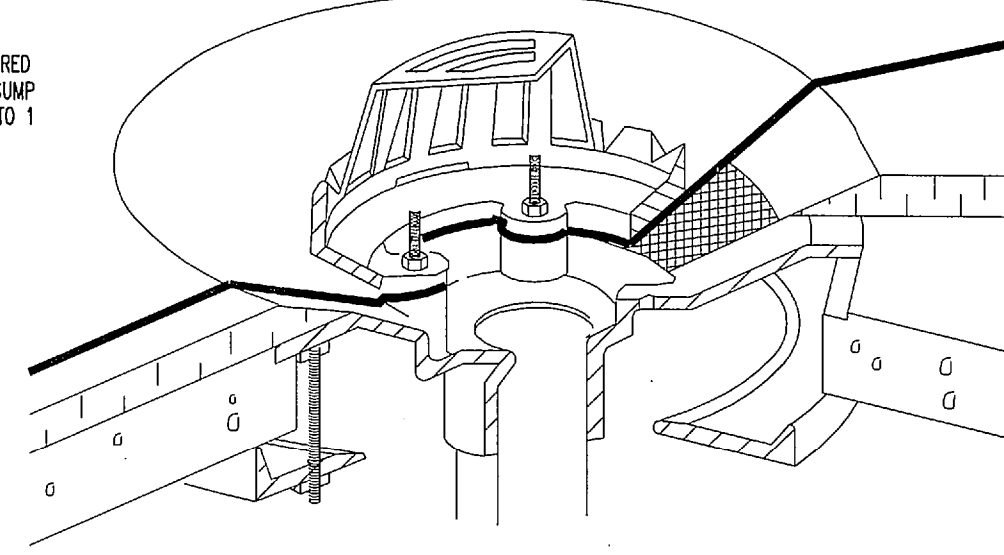
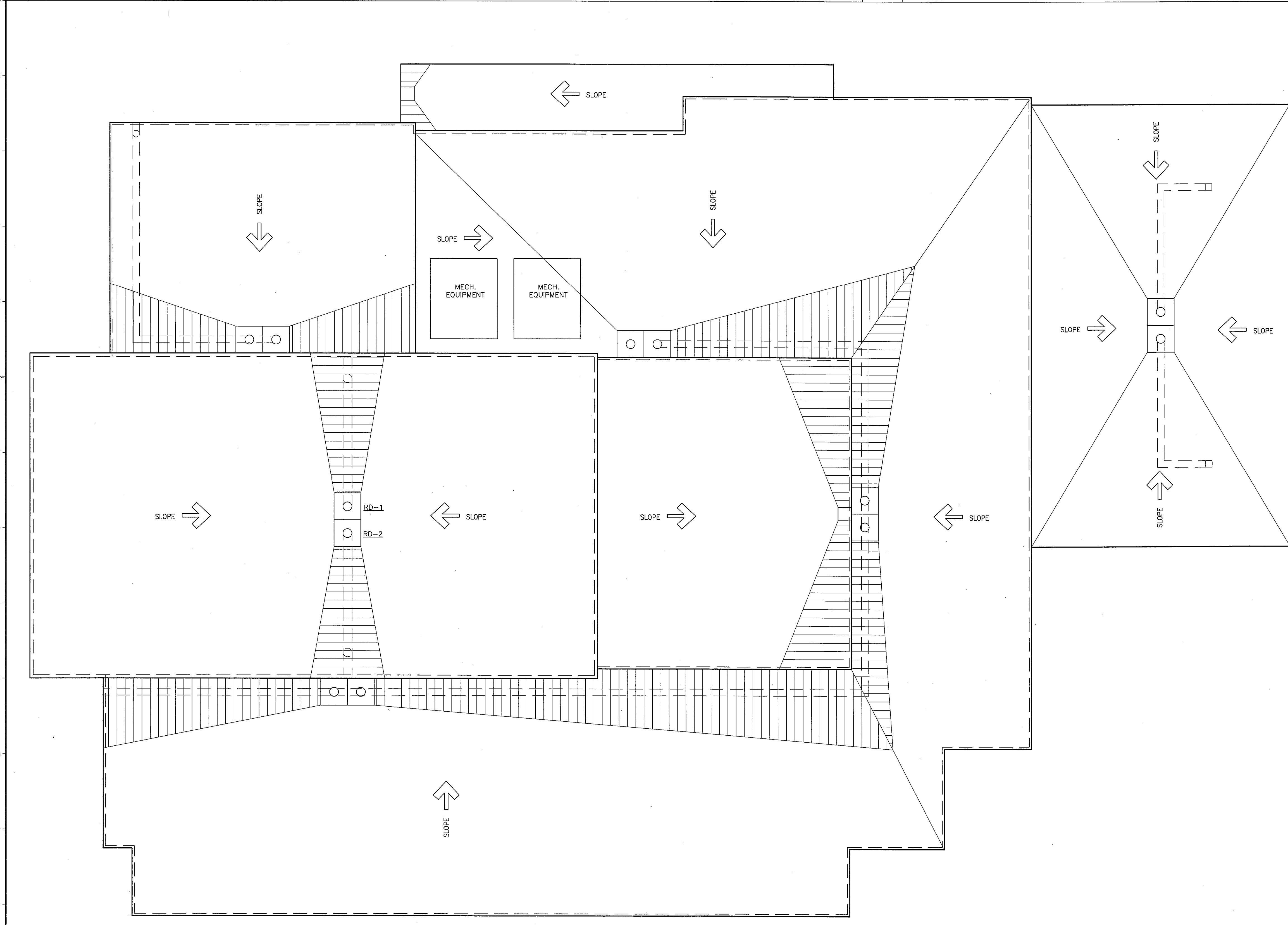


FOR DRAINS WITH TAPERED INSULATION AT DRAIN SUMP LESS THAN 3 INCHES TO 1 HORIZONTAL FOOT (75 mm/300 mm)



**OI SECTION DETAIL**  
1/2"=1'-0" ROOF - DRAIN & OVERFLOW DRAIN

**OII SECTION DETAIL**  
1/2"=1'-0" ROOF - VENT PENETRATION

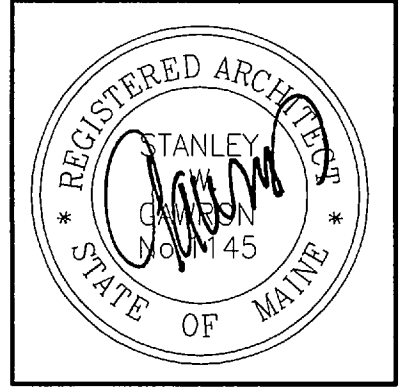


**AI ROOF PLAN**  
1/4"=1'-0"

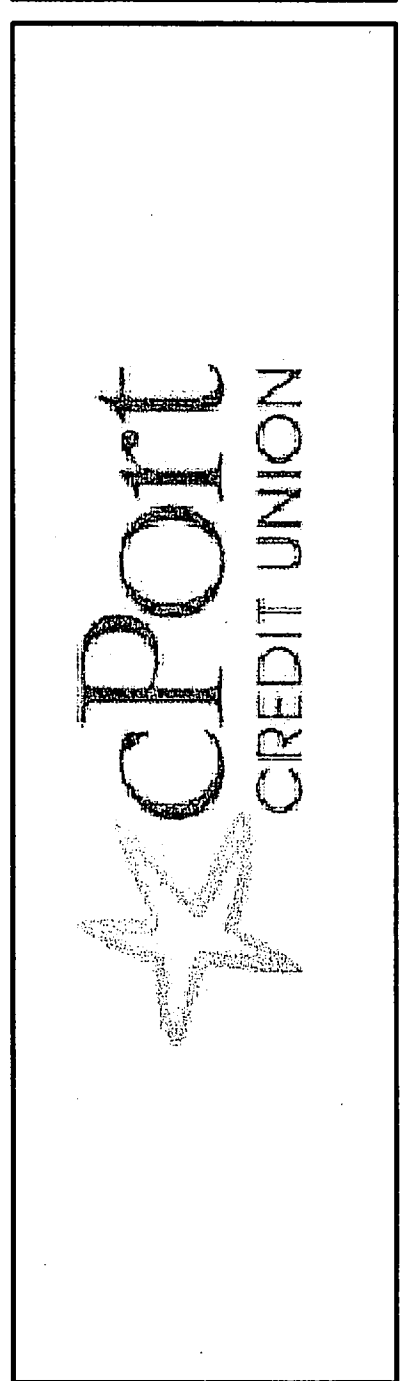
- 01 ROOFING SYSTEM - WHITE TPO MECHANICALLY FASTENED w/ TAPERED INSULATION or 5" POLYISOCYANATE INSULATION on METAL DECK
- 02 PRE-FINISHED ALUMINUM COMPOSITE MATERIAL GRAVEL STOP FASCIA - REFER TO DETAIL --/A200
- 03 MECHANICAL EQUIPMENT PENETRATION - REFER TO SECTION DETAIL O11/A200 & MEP DRAWINGS
- 04 4' x 4' ACCESS HATCH - SIMILAR TO SECTION DETAIL --/A200
- 05 ROOF DRAIN w/ OVERFLOW REFER TO SECTION DETAIL --/A200
- 06 ROOF DRAIN SIMILAR TO DETAIL --/A200
- 07 CRICKET - BUILT-UP INSULATION - SLOPE @ 1/4" PER FOOT MIN.
- 08 ROOF TOP MECHANICAL EQUIPMENT
- 09 TAPERED INSULATION SYSTEM - SLOPE @ 1/4" PER FOOT MIN.
- 10 ROOF SCUPPER

GENERAL NOTES:  
REFER TO DESIGN BUILD M.E.P. DRAWINGS FOR ANY ROOFTOP EQUIPMENT, ASSOCIATED CURBS & PENETRATIONS - ALL REQUIRED ROOF PENETRATIONS ARE NOT SHOWN ON THESE DRAWINGS - ALL CONTRACTORS SHALL COORDINATE ALL WORK TO BE COMPLETED BY EACH TRADE PRIOR TO COMMENCEMENT OF CONSTRUCTION  
PROVIDE CRICKETS @ ALL ROOF TOP EQUIPMENT AND OR IMPEDIMENTS TO INSURE SMOOTH FLOW OF WATER.

**A17 NOTES**



**Gawron Turgeon ARCHITECTS**  
29 Black Point Road  
Scarborough, Maine 04074  
www.gawronturgeon.com  
207-883-8307 tel 207-883-0361 fax



REVISIONS		
#	DATE	DESCRIPTION
1	10/05/11	ISSUED FOR PERMITTING ONLY

DATE	10-05-11
PROJECT #	030311
DRAWN BY:	DLP
CHECKED BY:	SWG
DRAWING SCALE	1/4"=1'-0"

**SHEET TITLE**  
ROOF PLAN  
DETAILS/NOTES

**A200**

© COPYRIGHT 1985-2008  
REPRODUCTION OR USE OF THIS DOCUMENT WITHOUT WRITTEN PERMISSION OF GAWRON TURGEON ARCHITECTS IS PROHIBITED