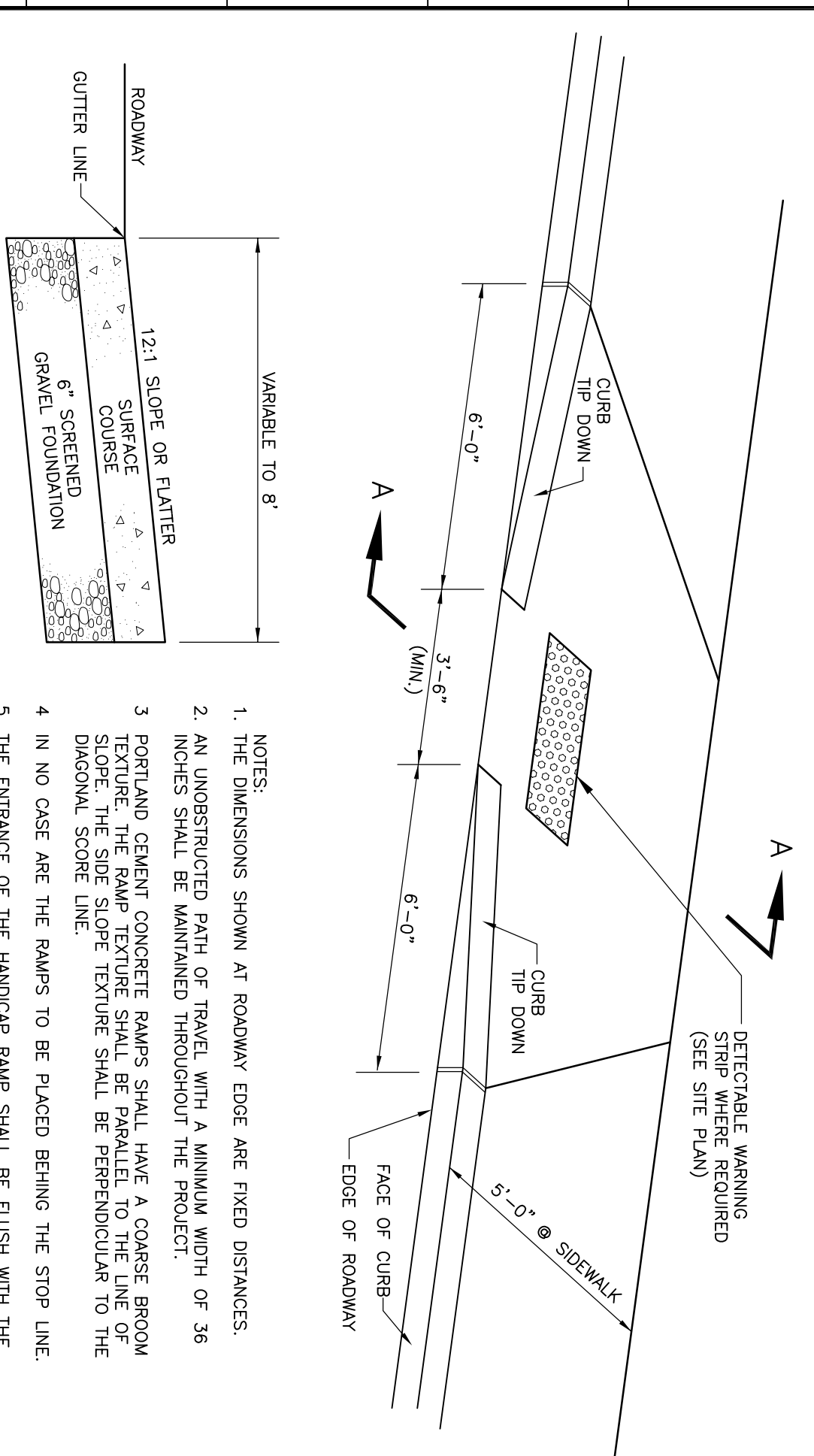


VERTICAL GRANITE CURB DETAIL
N.T.S.

NOTE: PER MDOT ITEM 609.03
NOTE: PER MDOT ITEM 703.06 (B) TYPE D

IDENTIFICATION NUMBER	SIGN HEIGHT	SIGN WIDTH	POST PER SIGN	TEXT	NUMBER OF SIGNS REQ'D.	SIGN AREA SQ. FT.	NOM. AREA TOTAL AREA	REMARKS
R1-1	24"	24"	1	STOP	2	4.0	8.0	PER MUTCO
R7-8	18"	12"	1	NO LEFT TURN	1	1.5	1.5	PER MUTCO
R8-1	30"	30"	1	DO NOT ENTER	2	6.25	12.5	PER MUTCO

NOTE: SIGNS SUPPLIED BY NEOKRAFT, BUT SHALL CONFORM TO MUTCO STANDARDS AND MDOT ITEM 645

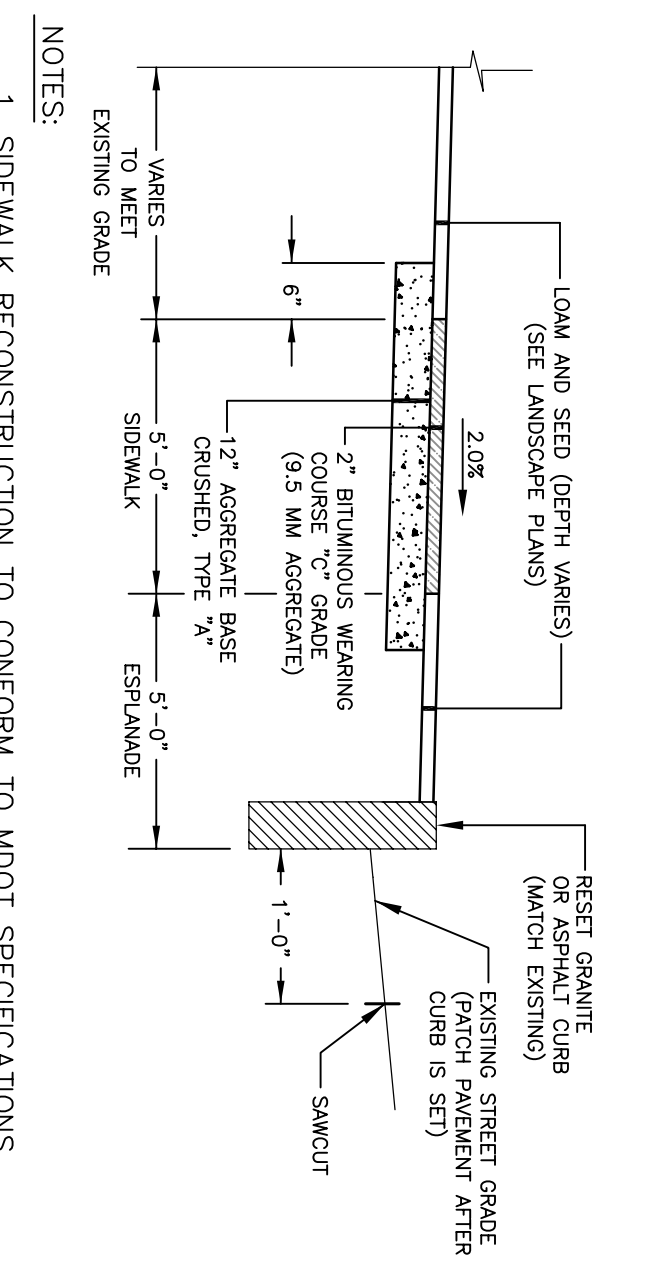


SECTION A-A

CURB TIP DOWN DETAIL
N.T.S.

- NOTES:
1. THE DIMENSIONS SHOWN AT ROADWAY EDGE ARE FIXED DISTANCES.
 2. ALL UNOBSERVED PATH OF TRAVEL WITH A MINIMUM WIDTH OF 36 INCHES SHALL BE MAINTAINED THROUGHOUT THE PROJECT.
 3. PORTLAND CEMENT CONCRETE RAMPS SHALL HAVE A COARSE GROOM SURFACE COURSE 4" THICK AND A 1/2" SAND BEDDING COURSE. THE SIDE SLOPE TEXTURE SHALL BE PERPENDICULAR TO THE DIAGONAL SCORE LINE.
 4. IN NO CASE ARE THE RAMPS TO BE PLACED BEHIND THE STOP LINE.
 5. THE ENTRANCE OF THE HANDICAP RAMP SHALL BE FLUSH WITH THE ROADWAY.
 7. WHEN A UTILITY POLE OR OTHER FIXED OBJECTS FALL WITHIN THE CROSSWALK AREA OF A SIDEWALK, THE HANDICAP RAMP WILL BE LOCATED SUCH THAT THE OBSTRUCTIONS FALL OUTSIDE OF THE RAMP.
 8. THESE DIMENSIONS ARE SUBJECT TO CHANGE IN THE FIELD IF EXISTING APPEARANCES OR CONDITIONS WILL CHANGE THE RAMP LOCATIONS IMPACTFUL ON VISIBILITY.
 9. PER MDOT ITEM 609.03

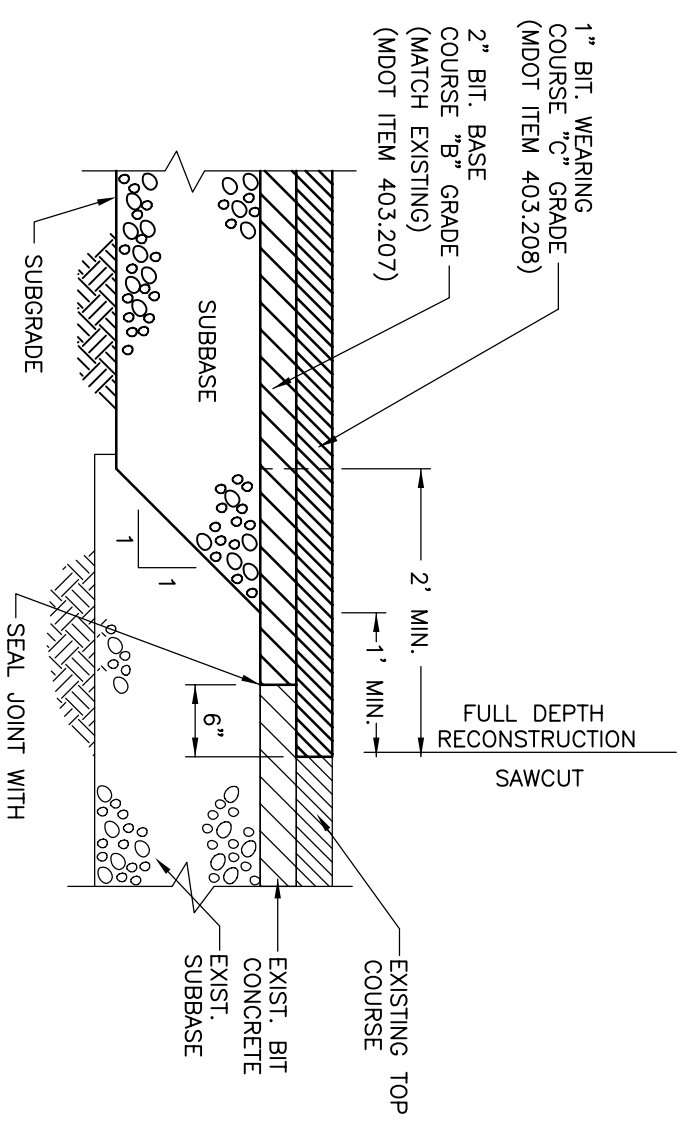
BITUMINOUS SIDEWALK DETAIL
NOT TO SCALE



NOTE: PER MDOT ITEM 608.04

SAWCUT & PAVEMENT MATCH DETAIL
N.T.S.

NOTE: PER MDOT ITEM 403



CEMENT, BRICK & BITUMINOUS WHEELCHAIR RAMPS

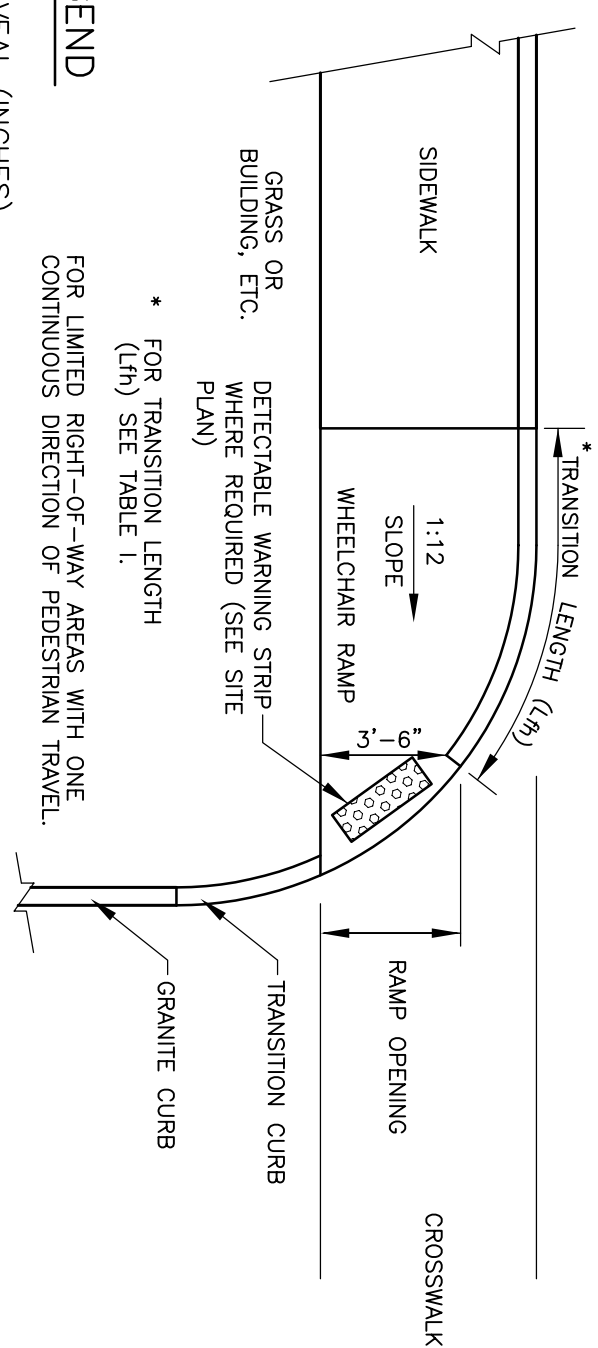
TABLE 1:

PROFILE GRADE	TRANSITION LENGTH Lth (FT.)
%	G
0	0
1	.01
2	.02
3	.03
4	.04
5	.05

NOTE: WHERE THE ROAD PROFILE EXCEEDS 5%, THE TRANSITION LENGTH SHALL BE FIFTEEN FT. (15.0')

* EQUATION: $Lth (FT.) = \frac{TS-12G}{G}$

WHEELCHAIR RAMP DETAIL (TYPE A)
N.T.S.



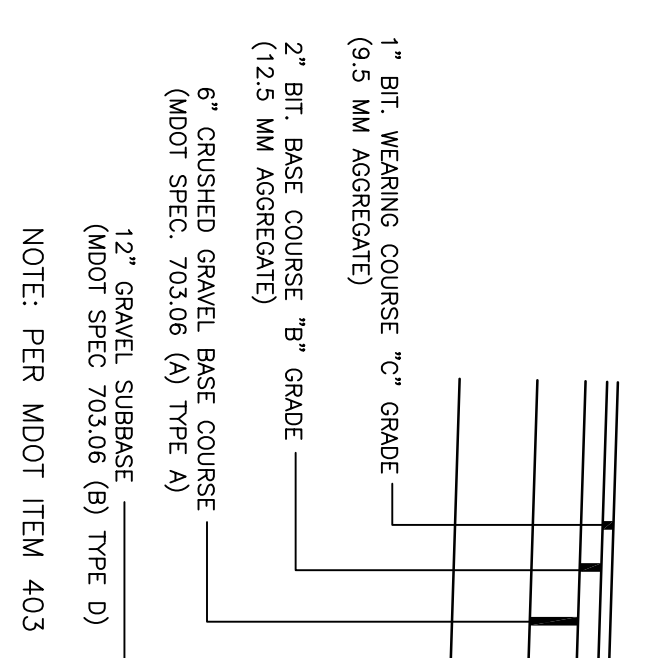
LEGEND

- R = CURB REVEAL (INCHES)
- G = ROAD PROFILE (FEET/FEET)
- TS = TRANSITION SLOPE (INCHES/FEET)
- L = LOW SIDE TRANSITION LENGTH (FEET)
- S+ = WHEELCHAIR RAMP SLOPE (INCHES/FEET)

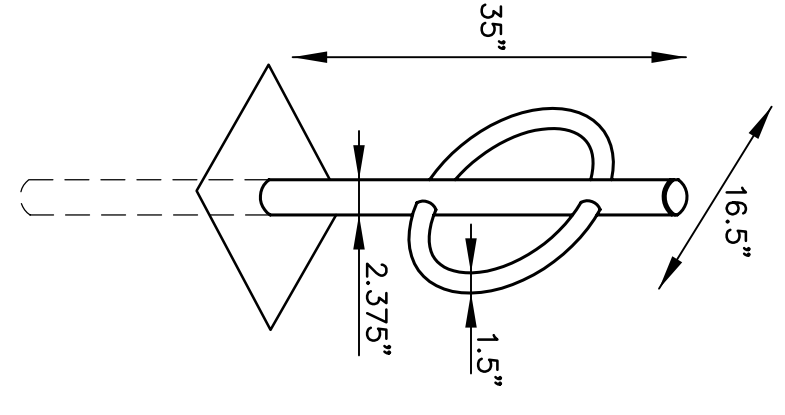
WHEELCHAIR RAMP NOTES

1. THE SIDEWALK CROSS SLOPE MUST NOT EXCEED 3/16" PER FOOT FOR BRICK AND CEMENT CONCRETE AND 3/16" PER FOOT FOR BITUMINOUS CONCRETE. REFER TO STANDARD SPECIFICATIONS FOR HIGHWAYS AND BRIDGES FOR THE LATEST SPECIFICATIONS FOR SIDEWALKS. CROSS SLOPE EXCEEDS 2% EXCEPT THE RAMP AREA PROPER WHICH IS EXEMPT.
2. AN UNOBSERVED PATH OF TRAVEL WITH A MINIMUM WIDTH OF 36" SHALL BE MAINTAINED.
3. THE WHEELCHAIR RAMP SLOPE AND SIDE SLOPES (TRANSITIONS) MUST NOT EXCEED 1:12. THE WHEELCHAIR RAMP SLOPE SHALL BE 1:12 WHEN WARRANTEED BY SURVEYING CONDITIONS.
4. WHERE THE ROAD PROFILE EXCEEDS 5% THE HIGH SIDE TRANSITION LENGTH (Lth) SHALL BE FIFTEEN FEET (15.0').
5. IN NO CASE, WHERE A STOP LINE IS WARRANTED, SHALL A RAMP BE PLACED BEHIND THE STOP LINE.
6. FIXED OBJECTS—UTILITY POLES, HOBANITS ETC.—MUST NOT ENROACH ON WHEELCHAIR RAMPS.
7. AT NO TIME IS ANY PART OF THE WHEELCHAIR RAMP TO BE LOCATED OUTSIDE OF THE CROSSWALK AND IT IS TO BE CENTERED WHEREVER POSSIBLE.
8. CATCH BASINS WHICH ARE TO BE LOCATED IN THE VICINITY OF A WHEELCHAIR RAMP SHOULD BE LOCATED UP-GRADE WHENEVER POSSIBLE.
9. THE ENTRANCE OF THE WHEELCHAIR RAMP SHALL BE FLUSH WITH THE ROADWAY.
10. TESTING SURFACE WHEN TESTING WITH A STRONGERTEC PLACED SHALL BE TO THE 1/4" OF AN INCH.
11. A HANDICAP TYPE WHEELCHAIR RAMP WILL NOT BE CONSTRUCTED ON BRIDGE DUE TO THE REQUIRED 12" CURB REVEAL, BUT ACCESSIBILITY WILL BE PROVIDED ALONG THE SIDEWALK.
12. WHEN IT IS TECHNOLOGICALLY UNFEASIBLE TO CONSTRUCT WHEELCHAIR RAMPS IN COMPLIANCE WITH THE ARCHITECTURAL ACCESS BOARD'S REGULATIONS, A VARIANCE SHALL BE SUBMITTED. THE DEPARTMENT'S HANDICAPPED ACCESSIBILITY SECTION SHOULD BE CONTACTED UNDER THESE CIRCUMSTANCES.

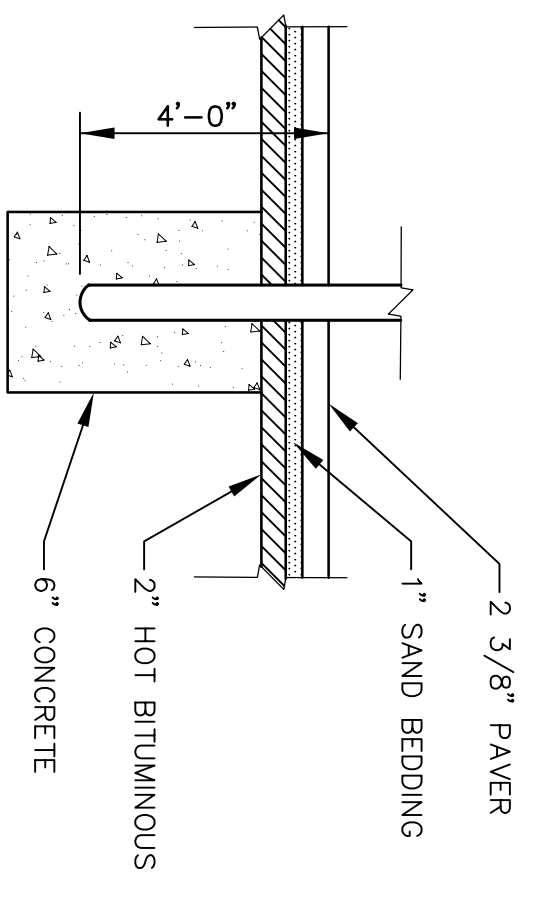
TYP. PAVEMENT SECTION (FULL DEPTH CONSTRUCTION)
NOT TO SCALE



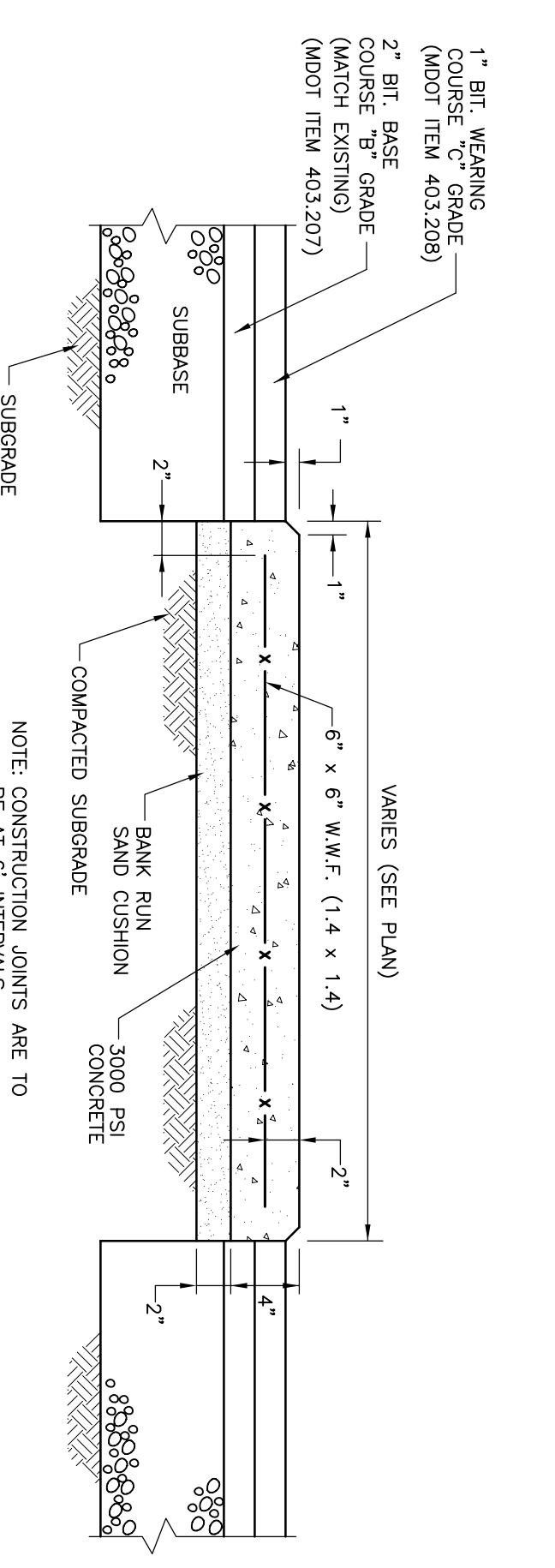
BIKE RACK DETAIL
NOT TO SCALE



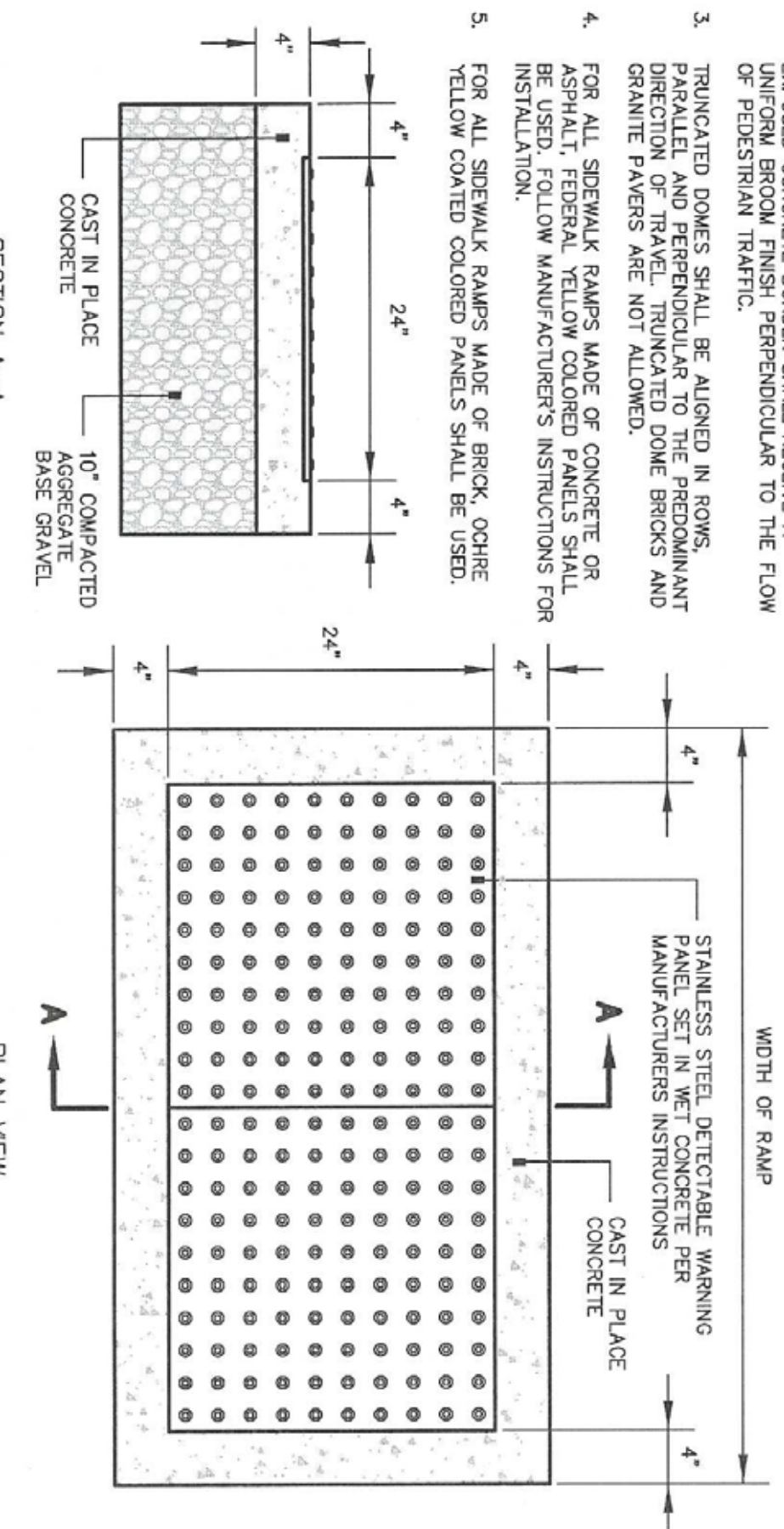
BIKE RACK BASE DETAIL



1" RAISED CONCRETE ISLAND DETAIL
N.T.S.



SIDEWALK RAMP DETECTABLE WARNING PANEL
NOT TO SCALE



NOTES:

1. STAINLESS STEEL TRUNCATED DOME PANELS SHALL BE SET IN A 1/2" DEEP BED OF 3000 PSI GRANITE CONCRETE. REFER TO STANDARD SPECIFICATIONS FOR HIGHWAYS AND BRIDGES FOR THE LATEST SPECIFICATIONS FOR SIDEWALKS. APPROVED EQUAL.
2. CAST IN PLACE CONCRETE SHALL MEET SPECIFICATIONS FOR MDOT CLASS A STRUCTURAL CONCRETE. MINIMUM COMPRESSIVE STRENGTH 4,000 PSI. THE CONCRETE SHALL BE PLACED AND FINISHED TO THE SURFACE OF THE UNFINISHED BROWN FINISH PERPENDICULAR TO THE FLOW OF PEDESTRIAN TRAFFIC.
3. TRUNCATED DOMES SHALL BE ALIGNED IN ROWS, PARALLEL AND PERPENDICULAR TO THE PREDOMINANT TRAFFIC FLOW. REFER TO STANDARD SPECIFICATIONS FOR HIGHWAYS AND BRIDGES FOR THE LATEST SPECIFICATIONS FOR SIDEWALKS. APPROVED EQUAL.
4. FOR ALL SIDEWALK RAMPS MADE OF CONCRETE OR GRANITE PAVERS ARE NOT ALLOWED.
5. FOR ALL SIDEWALK RAMPS MADE OF BRICK, COBBLE OR GRANITE PAVERS ARE NOT ALLOWED. YELLOW COATED COLORED PANELS SHALL BE USED.

C-8
CONSTRUCTION DETAILS - SHEET 1

DATE	DESCRIPTION

PROJECT #
DRAWN BY:
CHECKED BY:
DRAWING SCALE AS NOTED

SHEET TITLE
CONSTRUCTION DETAILS - SHEET 1

REVISIONS

#	DATE	DESCRIPTION

CPORT CREDIT UNION
285 FOREST AVE
PORTLAND, MAINE

Gawron Turgeon ARCHITECTS
292 Brook Point Road
Scarborough, Maine 04074
Scale: As Shown
Tel: 207-882-8307 Fax: 207-882-0281