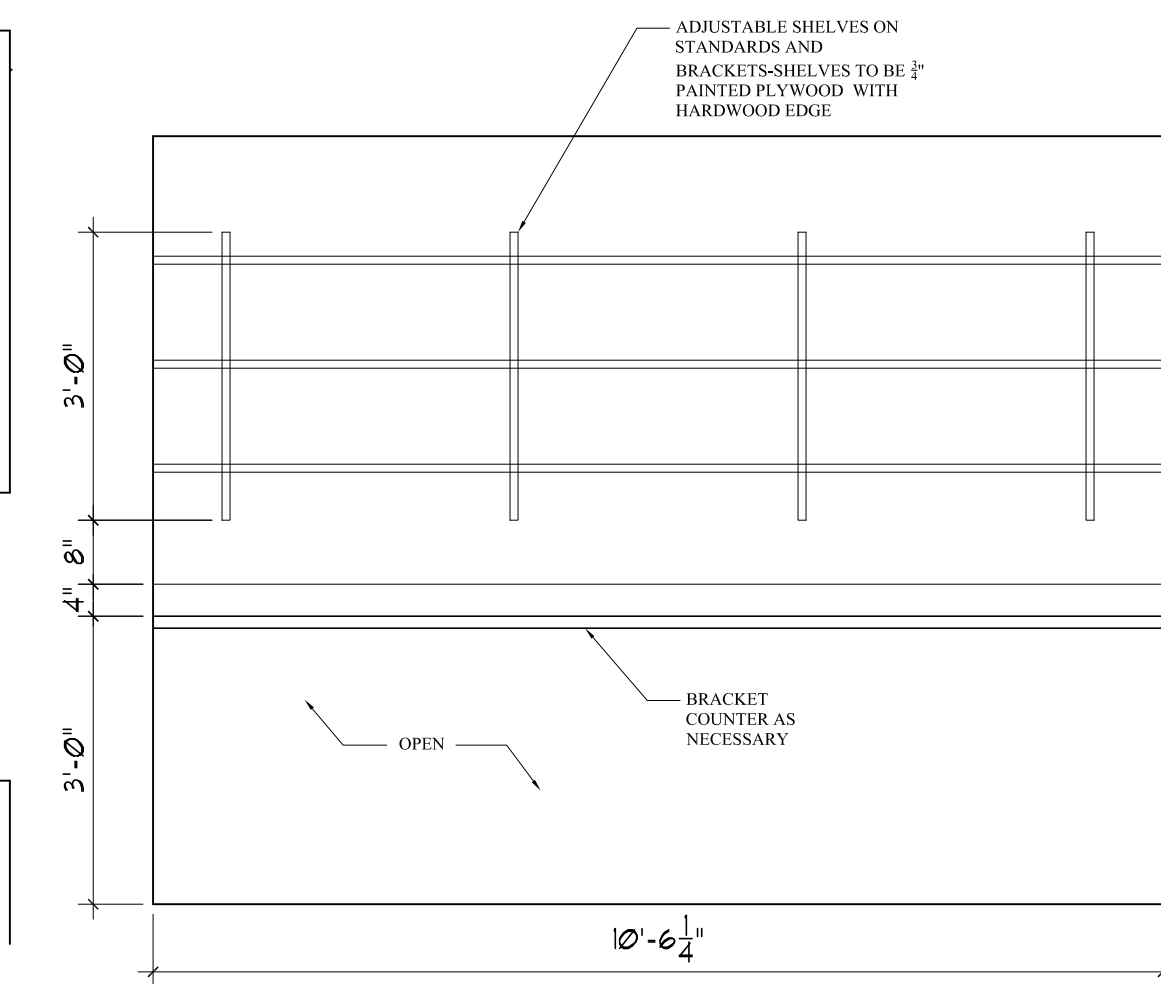
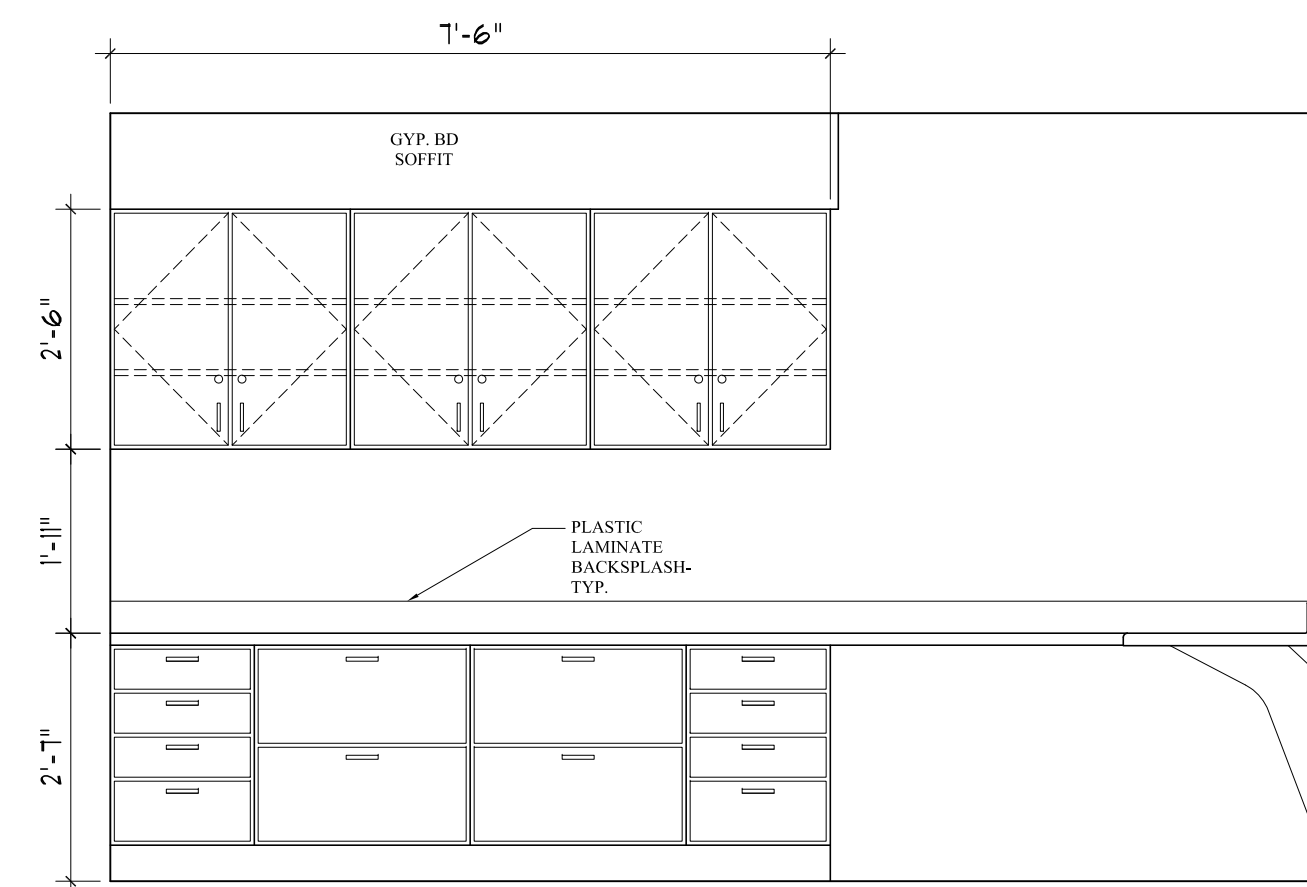


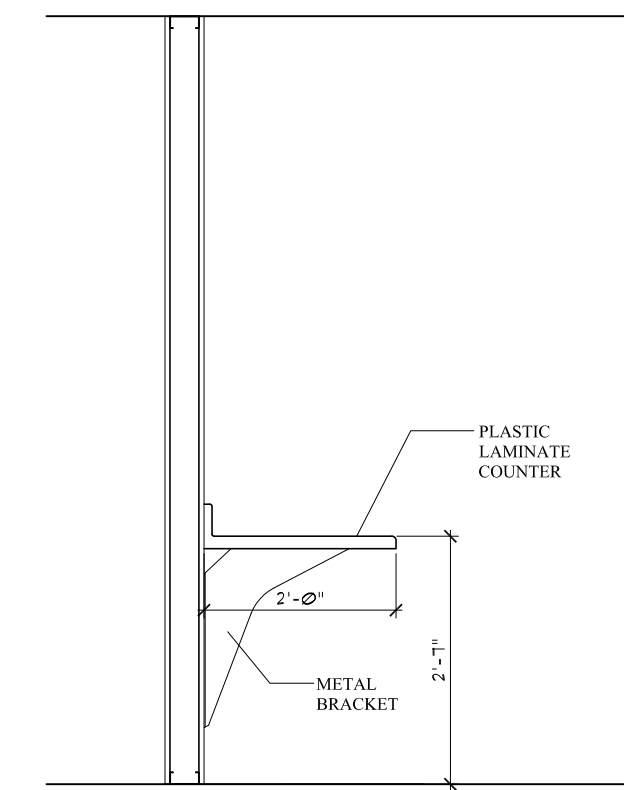
1 MEDICAL RECORDS #32 FLOORPLAN
1/2"=1'-0"



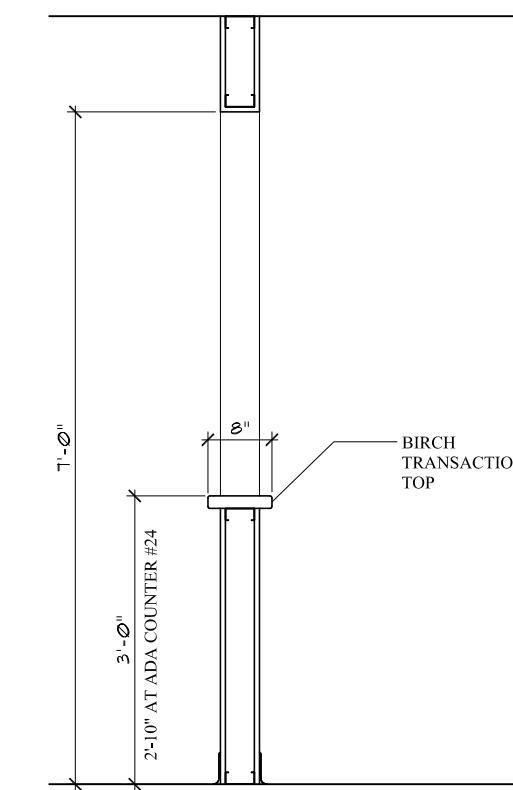
2 MEDICAL RECORDS #32 INTERIOR ELEVATION
1/2"=1'-0"



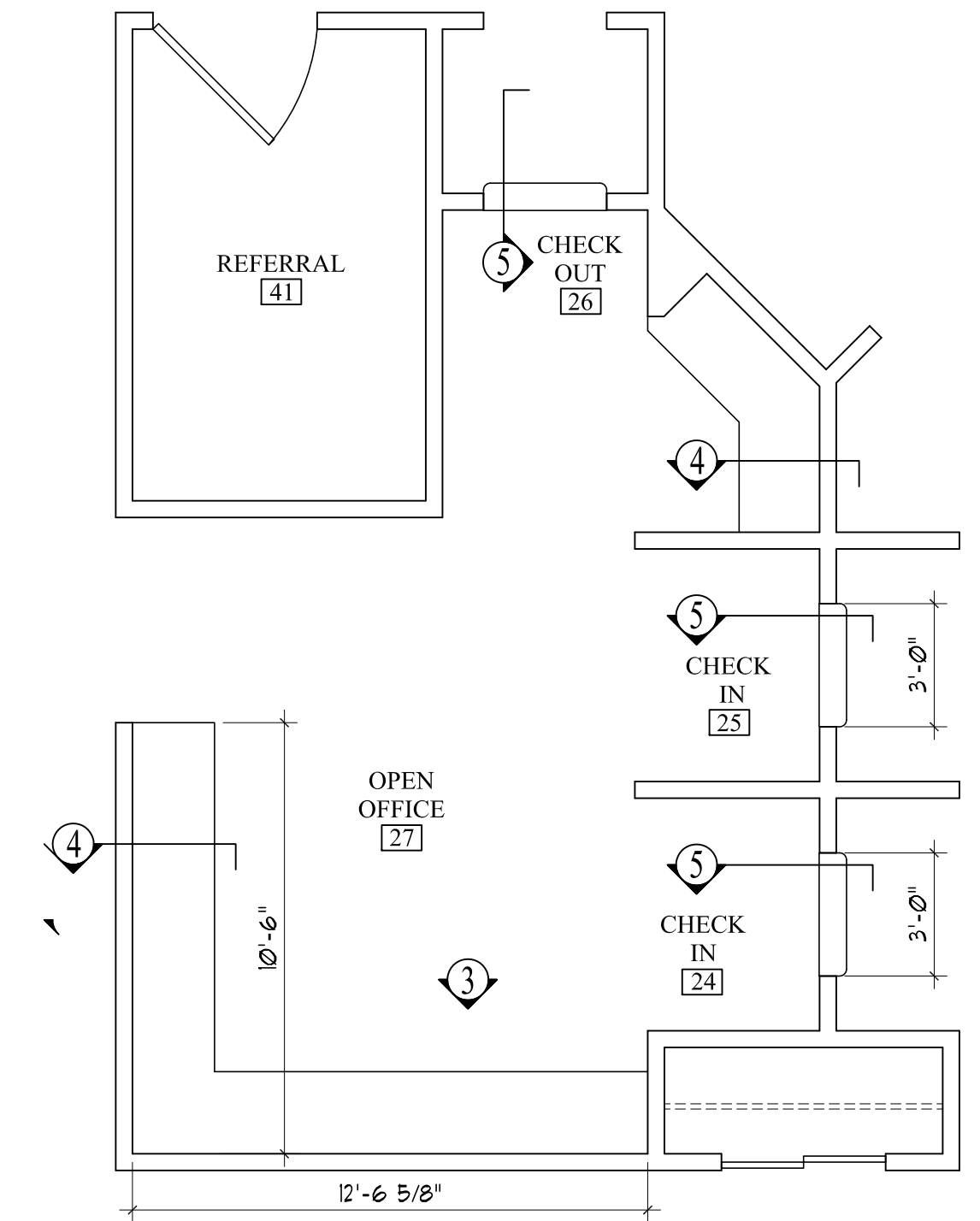
3 OPEN OFFICE #27 INTERIOR ELEVATION
1/2"=1'-0"



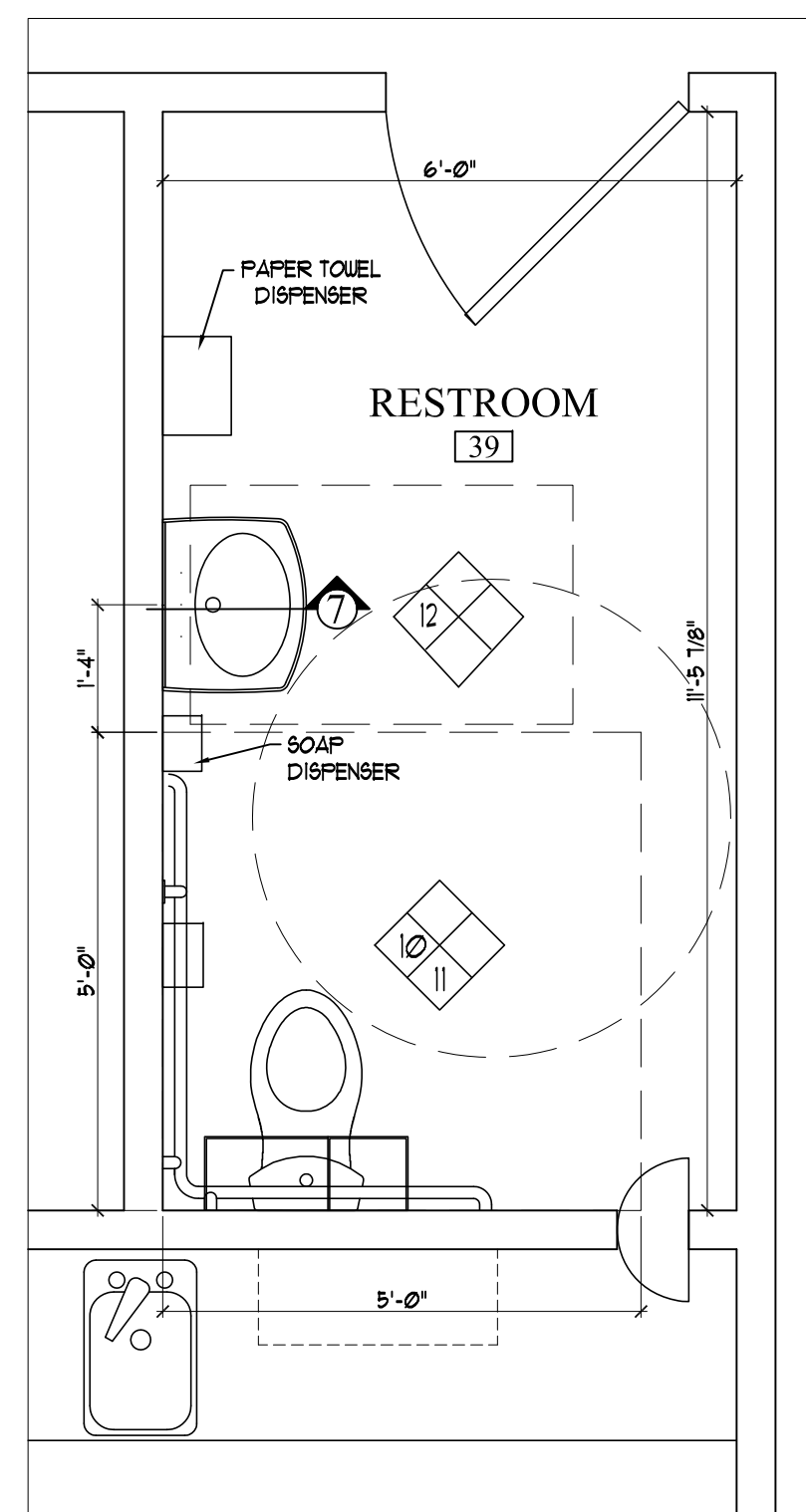
4 OPEN OFFICE COUNTER SECTION
1/2"=1'-0"



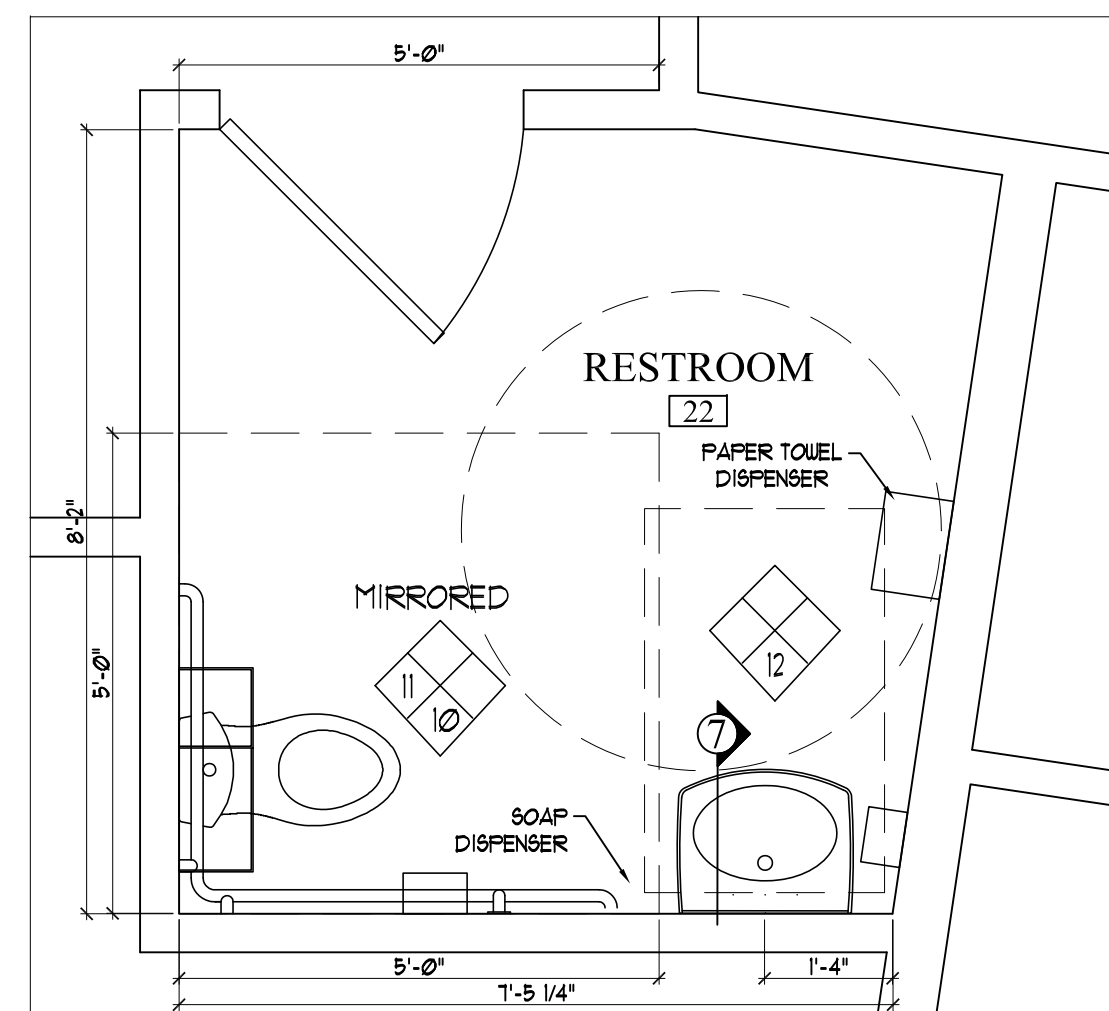
5 CHECK-IN/OUT SECTION
1/2"=1'-0"



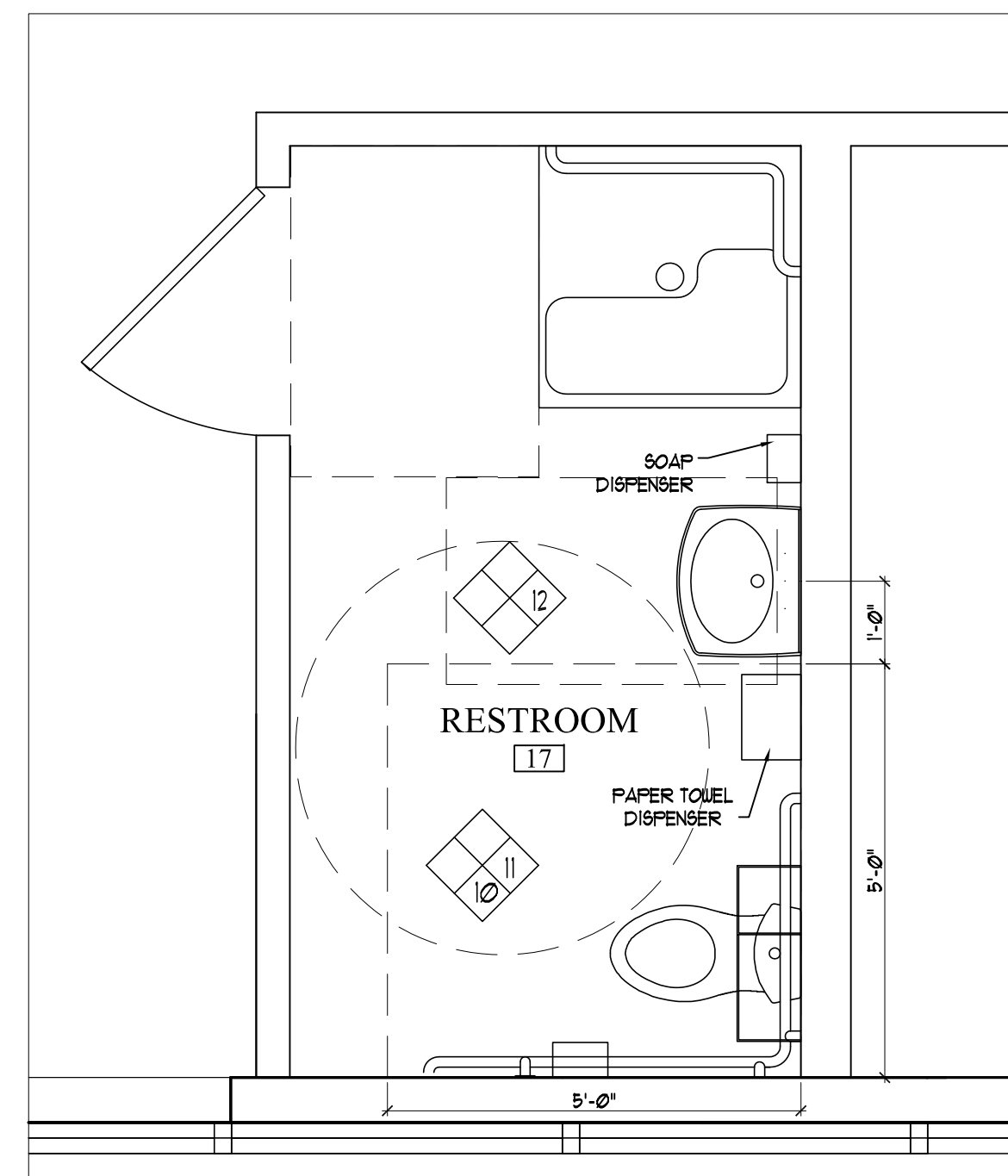
6 PLAN AT OPEN OFFICE AND CHECK-IN/OUT
1/4"=1'-0"



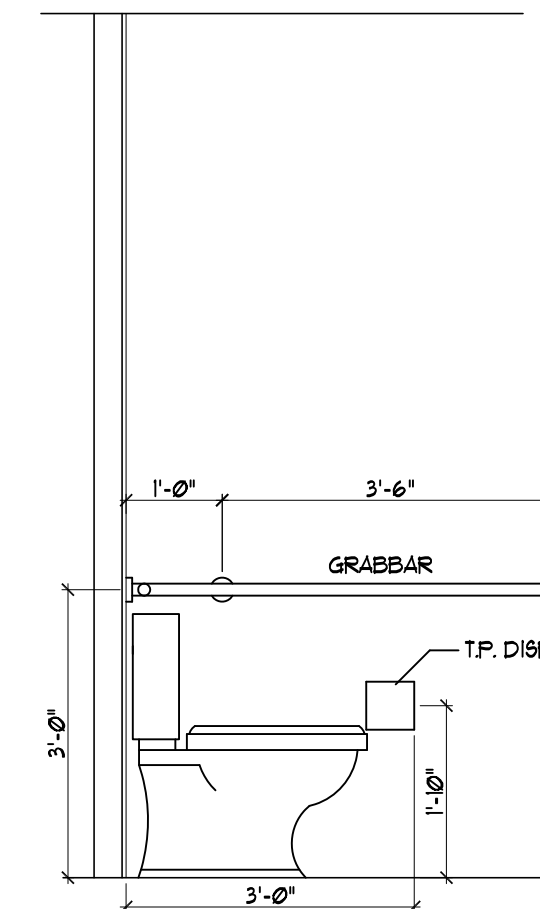
7 RESTROOM #39 FLOORPLAN
1/2"=1'-0"



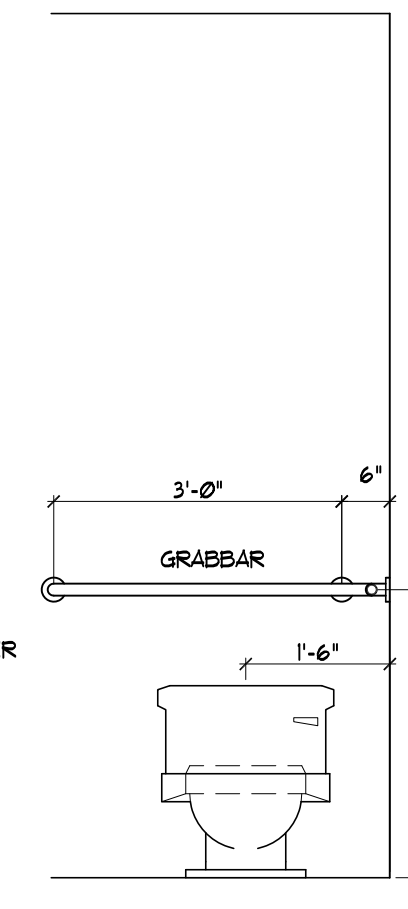
8 RESTROOM #22 FLOORPLAN
1/2"=1'-0"



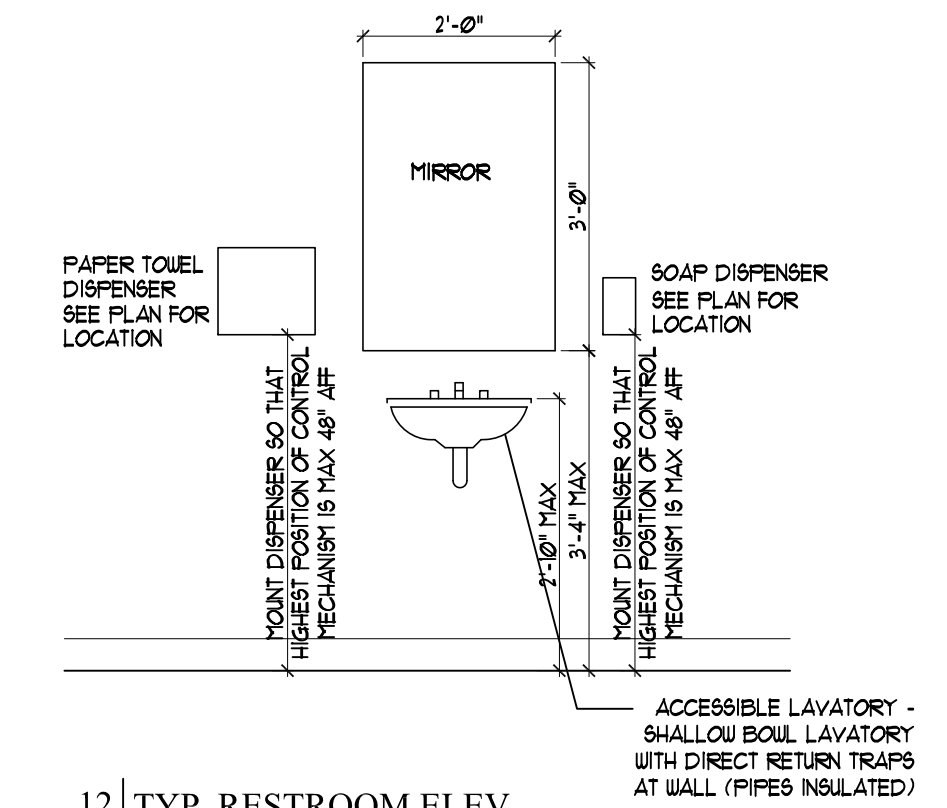
9 RESTROOM #17 FLOORPLAN
1/2"=1'-0"



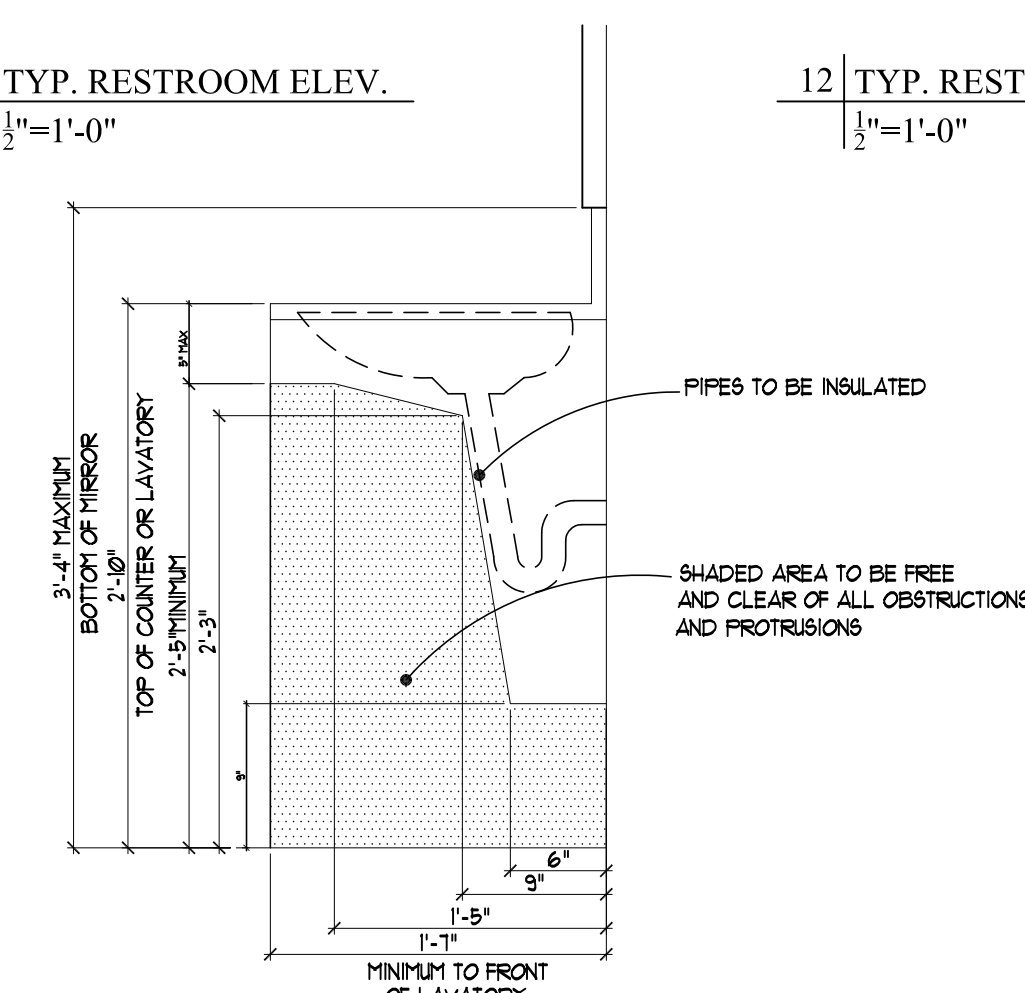
10 TYP. RESTROOM ELEV.
1/2"=1'-0"



11 TYP. RESTROOM ELEV.
1/2"=1'-0"



12 TYP. RESTROOM ELEV.
1/2"=1'-0"



13 DETAIL AT LAVATORY
1/2"=1'-0"

EQUIPMENT & ACCESSORY SCHEDULE				EQUIPMENT & ACCESSORY SCHEDULE				EQUIPMENT & ACCESSORY SCHEDULE					
TAG	DESCRIPTION	STATUS	TAG	DESCRIPTION	STATUS	TAG	DESCRIPTION	STATUS	TAG	DESCRIPTION	STATUS	NOTES	
[A]	BREAKROOM REFRIGERATOR	L/C	[H]	18", 36" & 42" GRAB BAR		[Q]	NOT USED		[Y]	FLAT SCREEN TV	L/C		
[B]	MIRROR - 20"W x 60" H	C/C	[I]	TOILET PAPER DISPENSER	L/C	[R]	RECYCLING BIN	L/L	[Z]	NOT USED	[28]	INTERIOR & EXTERIOR SIGNAGE	O/O
[C]	MICROWAVE	L/L	[J]	GRAB BARS	C/C	[S]	SCALE	L/L	[21]	NOT USED	[29]	EYEWASH STATION	C/C
[D]	COFFEE MAKER	L/L	[K]	MIRROR, 24"W x 36"H	C/C	[T]	TRASH BIN	L/L	[22]	NOT USED	[210]	TV WALL MOUNT - MMS LAM50 - LARGE - XL - ARTICULATING WALL MOUNT 40" - 63". MOUNTSMADSIMPLE.COM.	C/C
[E]	4 - SLICE TOASTER	L/L	[L]	SHARPS CONTAINER	L/C	[U]	GLOVE DISPENSER	L/C	[23]	NOT USED			
[F]	PAPER TOWEL DISPENSER	L/C	[M]	HAND SANITIZER	L/C	[V]	DRINKING FOUNTAIN	C/C	[24]	NOT USED			
[G]	HAND SOAP DISPENSER	L/C	[N]	PHOTO COPIER	L/L	[W]	NOT USED		[25]	NOT USED			
			[O]	FAX	L/L	[X]	CORK BOARD - 24" x 36" - 3M COMMERCIAL OFFICE SUPPLY DIV. - # MMM - C3624LC.	L/C	[26]	SPECIMEN PASS-THRU	C/C		
			[P]	PRINTER	L/L				[27]	COAT HOOK, SINGLE, DOOR MOUNTED	C/C		

OWNER: CHABOT ST. LLC
100 Silver Street
Portland, Maine 04101

ARCHETYPE, P.A. ARCHITECTS
48 Union Wharf Portland, Maine 04101
(207) 772-6022 Fax (207) 772-4056

MERCY
43 BAXTER BLVD.
PORTLAND, MAINE

Project: _____
Revisions: _____
Scale: as noted
Date: November 2nd, 2010

INTERIOR ELEVATIONS

A3.2