

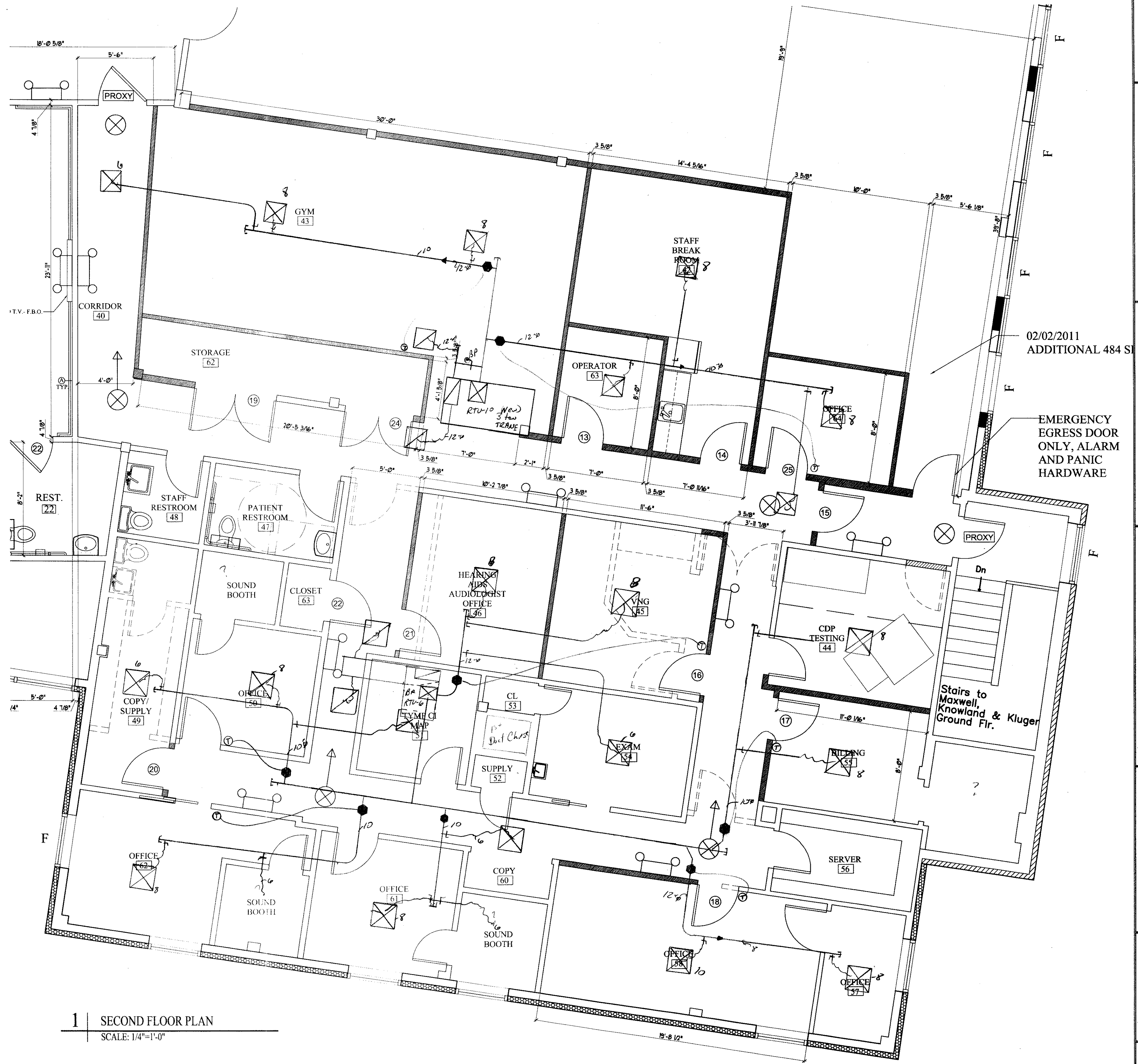
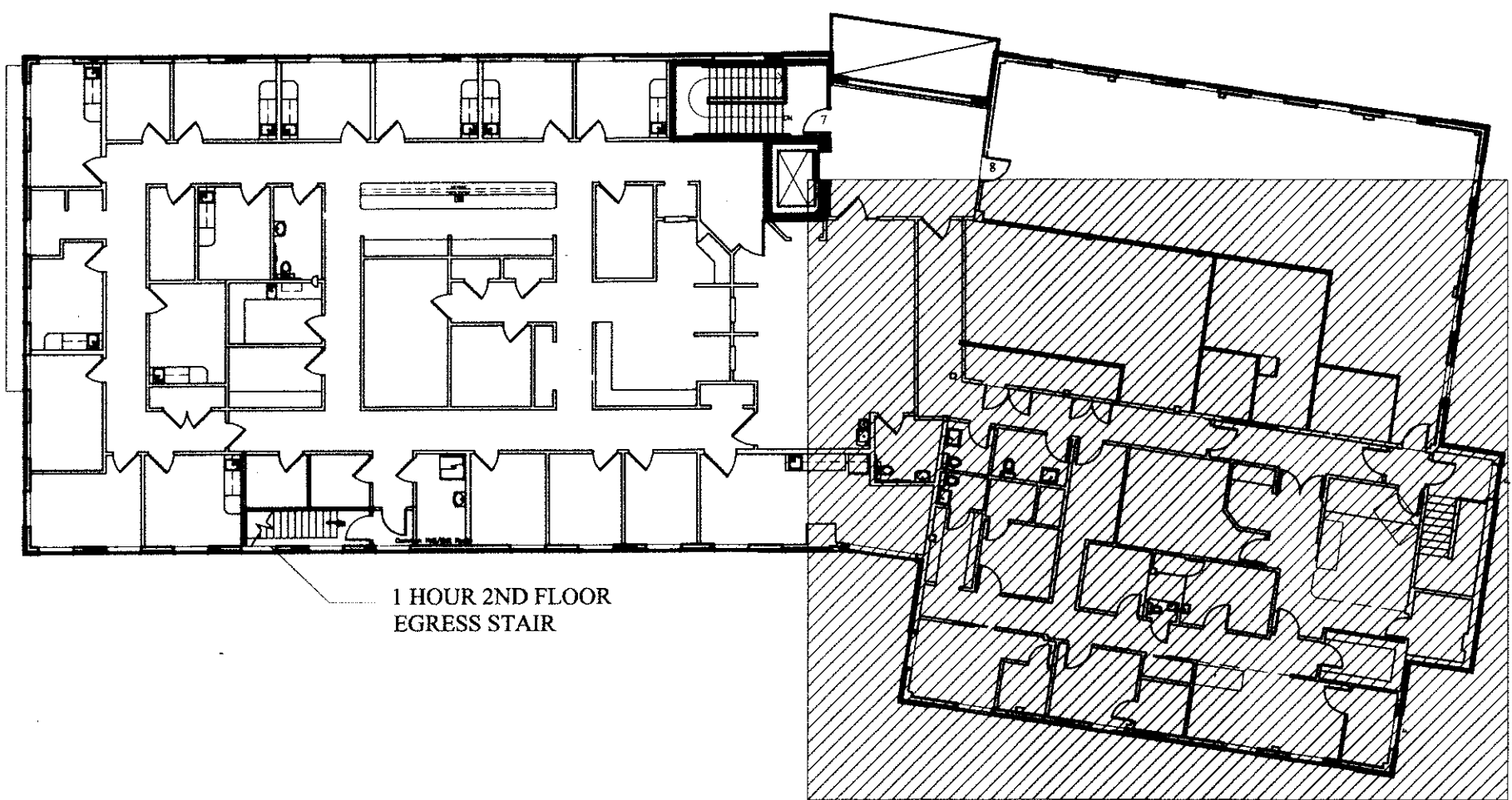
*** FINISH SCHEDULE ***

#	DESCRIPTION	FLOOR	BASE	WALL	CEIL.	#	DESCRIPTION	FLOOR	BASE	WALL	CEIL.
01	Office	VCT-1	VINYL	PT-2/3	ACT-2	32	Exam Room	VCT-1	VINYL	PT-2/3	ACT-1
02	Exam Room	VCT-1	VINYL	PT-2/3	ACT-1	33	Saled	VCT-1	VINYL	PT-1	GYP
03	MA Office	CPT-1	VINYL	PT-2/3	ACT-1	34	MA Office	CPT-1	VINYL	PT-2/3	ACT-2
04	MA Office	CPT-1	VINYL	PT-2/3	ACT-2	35	Exam Room	VCT-1	VINYL	PT-2/3	ACT-1
05	Exam Room	VCT-1	VINYL	PT-2/3	ACT-1	36	Office	CPT-1	VINYL	PT-2/3	ACT-2
06	Office	CPT-1	VINYL	PT-2/3	ACT-2	37	Office	CPT-1	VINYL	PT-2/3	ACT-2
07	Restroom	VCT-2	VINYL	PT-1	ACT-1	38	House Keeping	VCT-1	VINYL	PT-1	ACT-2
08	Corridor	VCT-1/2	VINYL	PT-1	ACT-1	39	Restroom	VCT-2	VINYL	PT-2/3	ACT-1
09	Exam Room	VCT-1	VINYL	PT-2/3	ACT-1	40	Corridor	VCT-1/2	VINYL	PT-1	ACT-1
10	Copy/Fax	VCT-1	VINYL	PT-2/3	ACT-1	41	Operator	VCT-1/2	VINYL	PT-1	ACT-2
11	Storage	VCT-1	VINYL	PT-1	ACT-2	42	Staff break Room	VCT-1	VINYL	PT-2/3	ACT-2
12	Exam Room	VCT-1	VINYL	PT-2/3	ACT-1	43	Gym	LIN-1	VINYL	PT-3	ACT-1
13	Exam Room	VCT-1	VINYL	PT-2/3	ACT-1	44	CDP Testing	VCT-1	VINYL	PT-2/3	ACT-1
14	Waiting Room	CPT-1	VINYL	PT-1	ACT-1	45	VNG	VCT-1	VINYL	PT-2/3	ACT-1
15	Check-In	VCT-1	VINYL	PT-1	ACT-1	46	Hearing Aids/Audiologist	CPT-1	VINYL	PT-2/3	ACT-2
16	Check-Out	VCT-1	VINYL	PT-1	ACT-1	47	Patient Restroom	VCT-2	VINYL	PT-2/3	ACT-1
17	PA Office	CPT-1	VINYL	PT-2/3	ACT-2	48	Staff Restroom	VCT-2	VINYL	PT-2/3	ACT-1
18	Manager Office	CPT-1	VINYL	PT-2/3	ACT-2	49	Copy/Supply	VCT-1	VINYL	PT-2/3	ACT-1
19	Exam Room	VCT-1	VINYL	PT-2/3	ACT-1	50	Office	CPT-1	VINYL	PT-2/3	ACT-2
20	Exam Room	VCT-1	VINYL	PT-2/3	ACT-1	51	Temp. CI Map	VCT-1	VINYL	PT-2/3	ACT-1
21	Medical Records	VCT-1	VINYL	PT-2/3	ACT-2	52	Supply	VCT-1	VINYL	PT-2/3	ACT-2
22	MA Office	CPT-1	VINYL	PT-2/3	ACT-2	53	Closet	VCT-1	VINYL	PT-1	ACT-2
23	Clean	VCT-1	VINYL	PT-1	ACT-2	54	Exam Room	VCT-1	VINYL	PT-2/3	ACT-1
24	Restroom	VCT-2	VINYL	PT-2/3	ACT-1	55	Billing	CPT-1	VINYL	PT-2/3	ACT-1
25	MA Office	CPT-1	VINYL	PT-2/3	ACT-2	56	Server	VCT-1	VINYL	PT-1	ACT-2
26	Exam Room	VCT-1	VINYL	PT-2/3	ACT-1	57	Office	CPT-1	VINYL	PT-2/3	ACT-2
27	Exam Room	VCT-1	VINYL	PT-2/3	ACT-1	58	Office	CPT-1	VINYL	PT-2/3	ACT-2
28	Med Closet	VCT-1	VINYL	PT-1	ACT-2	59	Office	CPT-1	VINYL	PT-2/3	ACT-2
29	Office	CPT-1	VINYL	PT-2/3	ACT-2	60	Supply	VCT-1	VINYL	PT-1	ACT-2
30	Corridor	VCT-1/2	VINYL	PT-1	ACT-1	61	Office	CPT-1	VINYL	PT-2/3	ACT-2
31	Exam Room	VCT-1	VINYL	PT-2/3	ACT-1	62	Office	CPT-1	VINYL	PT-2/3	ACT-2

FINISH KEY

MANUFACTURER	STYLE	COLOR	REMARKS
ACT	Armstrong	TYPE 1-MESA 686 ANGLED TEGULAR TYPE 2-FINE FIGURED 1732 ANGLED TEGULAR SIZE AS INDICATED ON CEILING PLAN	White
CPT-1	Shaw	Philadelphia Dateline 54029	29750 Globe
LIN-1	Mannington	Biospec	Oyster White (LC) 15101
PT-1	Benjamin Moore	Eggshell	HC-80 Bleeker Beige
PT-2	Benjamin Moore	Eggshell	OC-24 Winds Breath
PT-3	Benjamin Moore	Eggshell	2133-50 Pigeon Gray Accent Wall Opposite door
VCT-1	Armstrong	Standard Excelon	51876 Mint Creme Field Tile
VCT-2	Armstrong	Standard Excelon	51807 Shadow Blue one tile-wide stripe down all corridors
VINYL	Johansonite	4" Vinyl Base	01-Snow White
PLAM	Wilsonart	4882-38	Oiled Soapstone All counters to be post-formed

KEY PLAN



OWNER:	CHABOT ST. LLC 100 Silver Street Portland, Maine 04101
Project:	02/02/2011 ADDITIONAL 484 S
Date:	February 8th, 2011
Scale:	1/4" = 1'-0"
Revisions:	
Architect:	ARCHETYPE, P.A. ARCHITECTS 48 Union Wharf Portland, Maine 04101 (207) 772-6022 Fax (207) 772-4056
Address:	43 BAXTER BLVD. PORTLAND, MAINE
Client:	Maxwell Kluger and Makaretz Second Floor Plan
A1-b	