

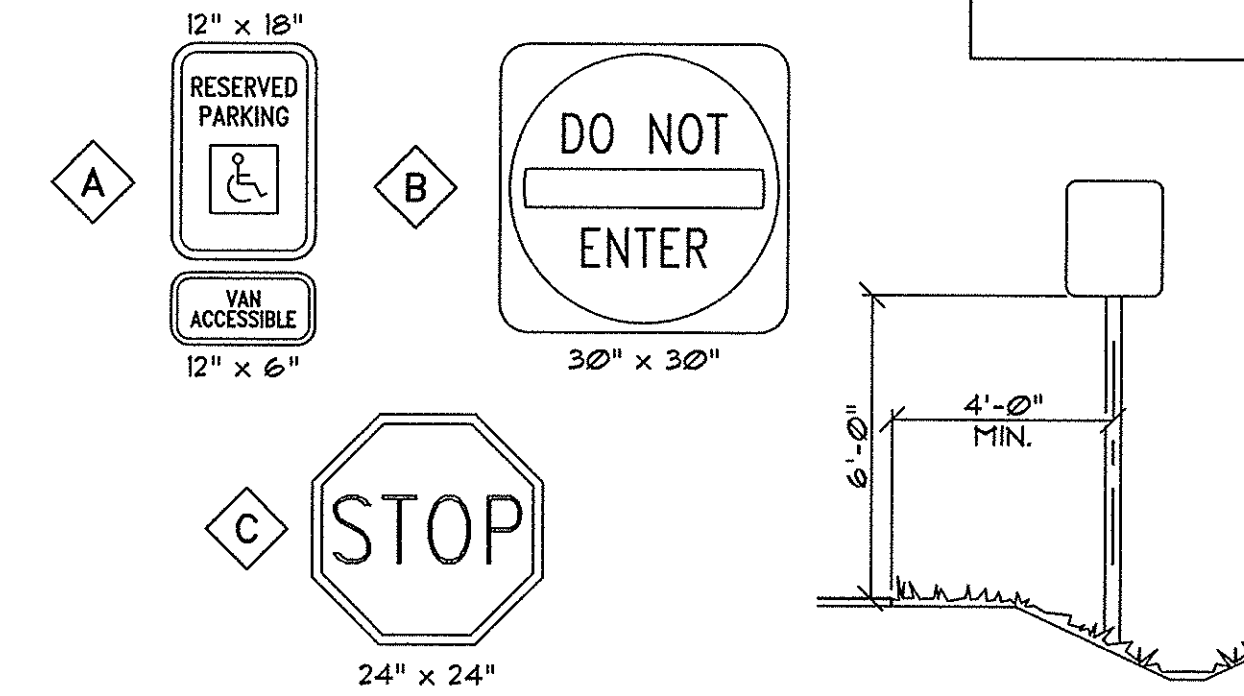
UNDERGROUND UTILITIES WARNING TAPE

IDENTIFICATION TAPE TO BE INSTALLED ABOVE ALL NEW UNDERGROUND UTILITIES AND ABOVE ANY EXISTING UTILITIES THAT MAY BE EXPOSED BY THIS CONSTRUCTION.

DETECTABLE UNDERGROUND MARKING TAPE TO BE PERMANENT, BRIGHT-COLORED, CONTINUOUS-PRINTED PLASTICIZED ALUMINUM TAPE, INTENDED FOR DIRECT-BURIAL SERVICE NOT LESS THAN 3" WIDE x 5 MILS THICK. PROVIDE TAPE WITH BLACK PRINTING IDENTIFYING THE UTILITY.
DETECTABLE WARNING TAPE REQUIRED OVER ALL WATER, SEWER, DRAINAGE, OR GAS UTILITIES. TAPE TO BE TERRA TAPE BY REEF INDUSTRIES, INC. www.reefindustries.com, OR EQUAL.

APWA UNIFORM COLOR CODE:

WHITE	PROPOSED EXCAVATION
PINK	TEMPORARY SURVEY MARKINGS
RED	ELECTRIC POWER LINES, CABLES, CONDUIT AND LIGHTING CABLES
YELLOW	GAS, OIL, STEAM, PETROLEUM OR GASEOUS MATERIALS
ORANGE	COMMUNICATION, ALARM OR SIGNAL LINES, CABLES OR CONDUIT
BLUE	POTABLE WATER
PURPLE	RECLAIMED WATER, IRRIGATION AND SLURRY LINES
GREEN	SEWERS AND DRAIN LINES

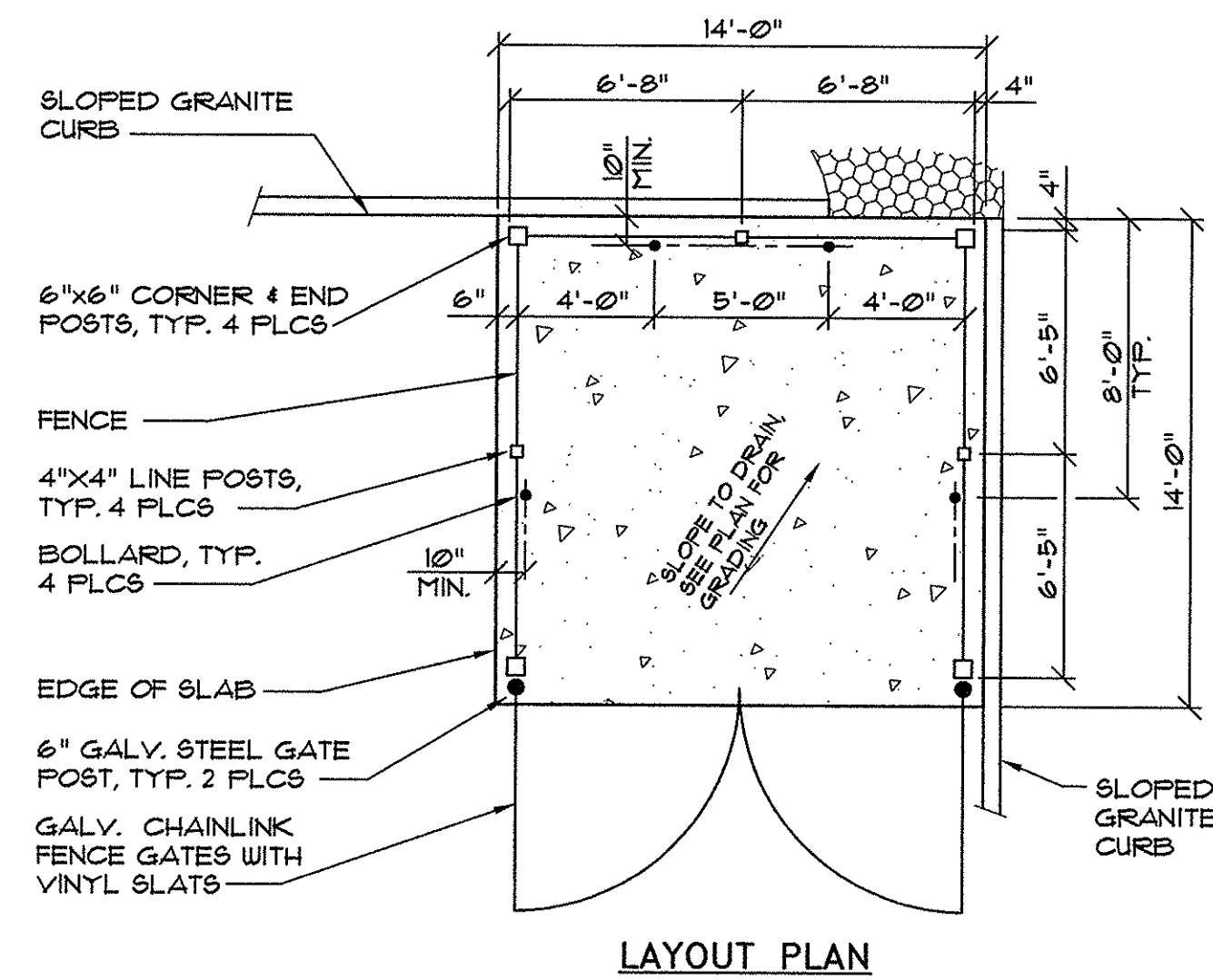


NOTES:

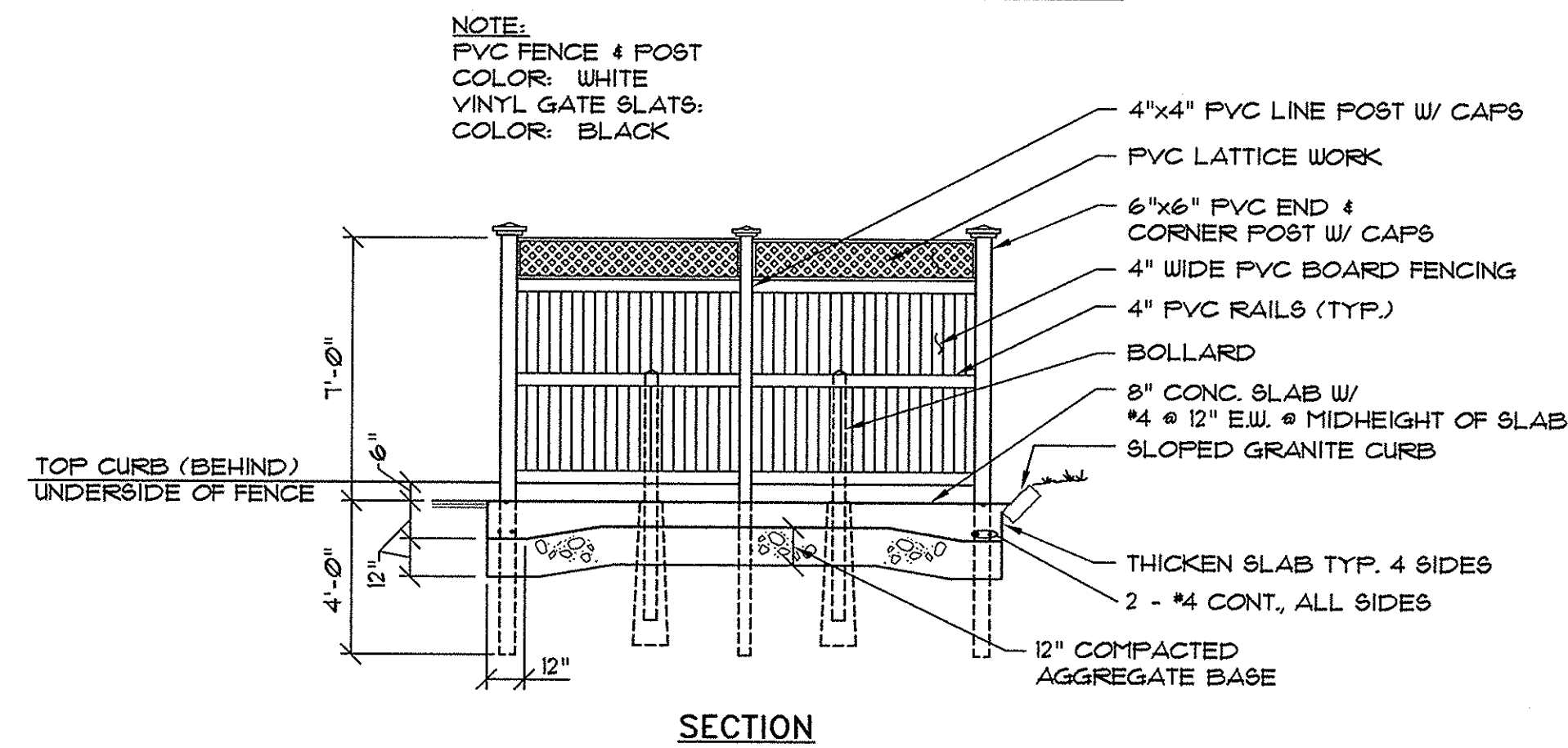
- SIGNS SHALL BE FABRICATED AND INSTALLED IN ACCORDANCE WITH MAINE DEPARTMENT OF TRANSPORTATION STANDARD SPECIFICATIONS, HIGHWAYS AND BRIDGES REVISION OF DECEMBER 2002, SECTION 645.
- ALL PERMANENT SIGNS ON THIS PROJECT ARE CLASSIFIED UNDER SECTION 645.03(b) TYPE I REGULATORY WARNING AND ROUTE MARKER ASSEMBLY SIGNS.
- SIGN MATERIAL SHALL BE AS SPECIFIED IN SECTION 119 OF THE MDOT STANDARD SPECIFICATIONS.
- POSTS SHALL BE METAL CHANNELS AS SPECIFIED IN SECTION 120.08. ALTERNATE POSTS MAY BE 4"x6" WOOD AS SPECIFIED IN SECTION 120.12, AS APPROVED BY ENGINEER.
- POSTS IN THE PUBLIC RIGHT-OF-WAY TO BE ON BREAKAWAY POSTS AS SPECIFIED IN SECTION 120 OF THE MDOT STANDARD SPECIFICATIONS.

1 ROAD SIGN LEGEND

NOT TO SCALE



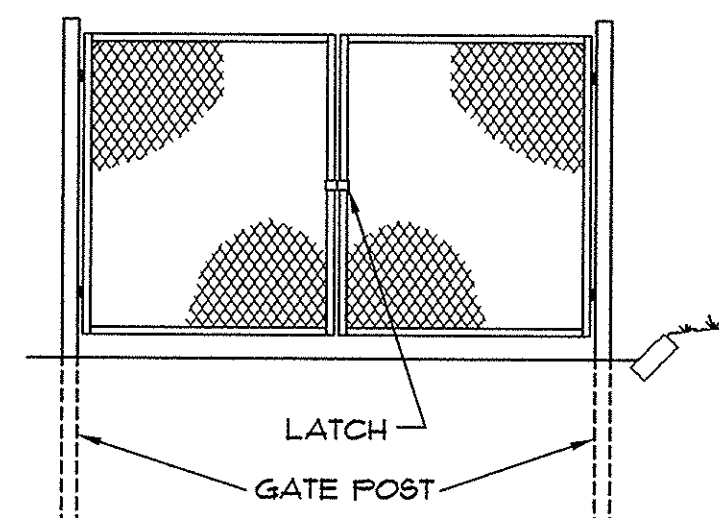
LAYOUT PLAN



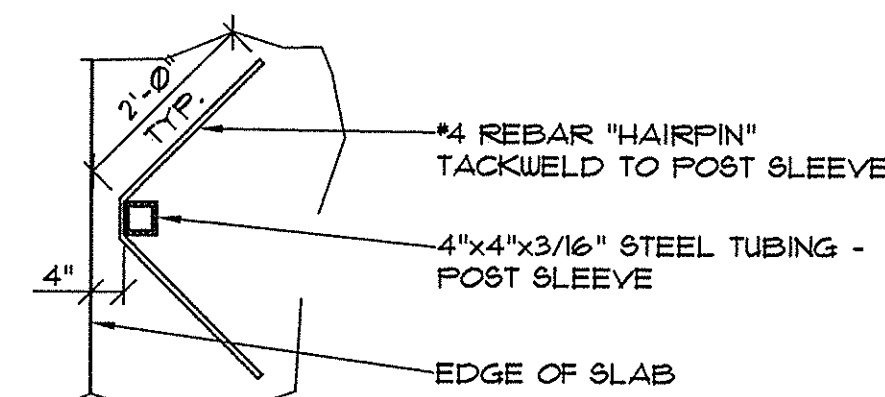
SECTION

7 DUMPSTER ENCLOSURE DETAIL

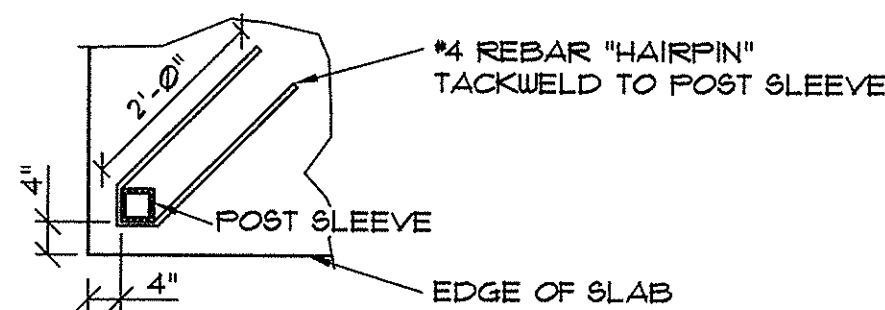
NOT TO SCALE



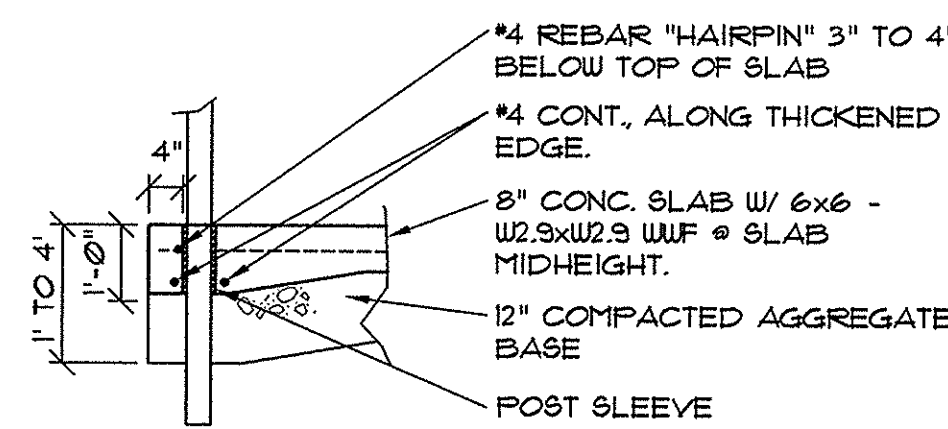
CHAINLINK GATES



PLAN VIEW - INTERMEDIATE POST SLEEVE

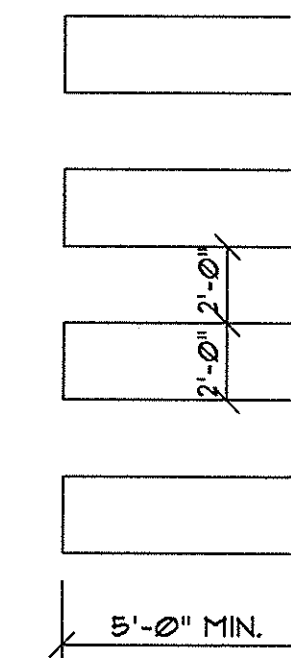


PLAN VIEW - CORNER POST SLEEVE

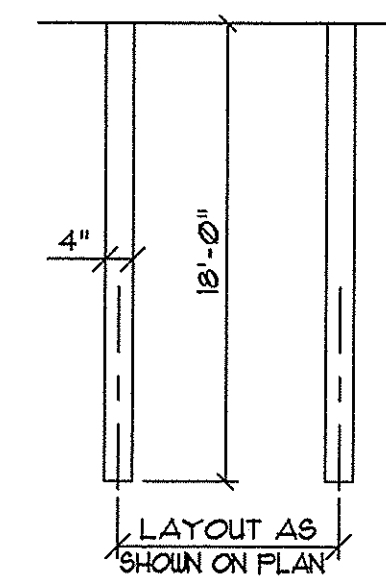


SECTION

POST SLEEVE DETAIL

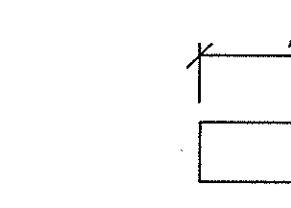


CROSSWALK



PARKING SPACE

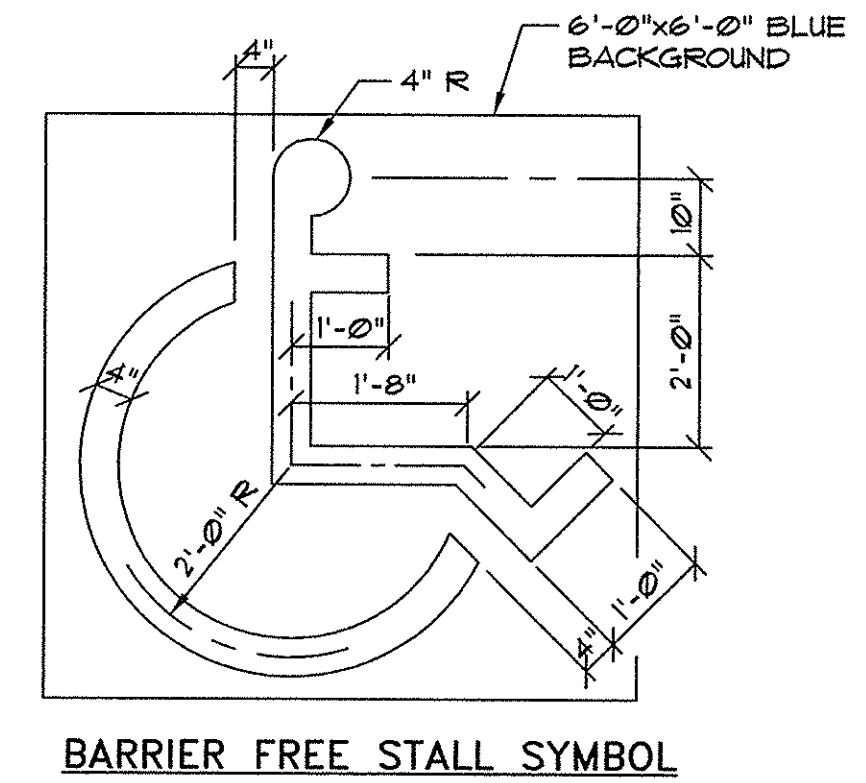
AS SHOWN ON PLAN



STOP LINE

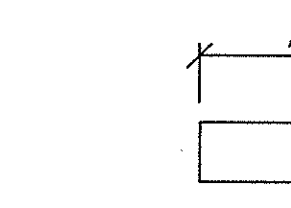
2 STRIPING DETAILS

NOT TO SCALE



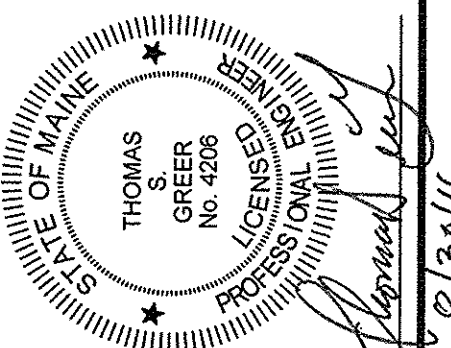
BARRIER FREE STALL SYMBOL

AS SHOWN ON PLAN



NO PARKING

PINKHAM & GREER
CIVIL ENGINEERS
28 WANNAM AVE. PORTLAND, ME 04103
TEL: 207.761.5242 FAX: 207.761.4245



REV.	DATE	DESCRIPTION

CHABOT STREET, LLC (RECORD OWNER)
100 SILVER STREET
PORTLAND, ME 04101

SCALE: AS SHOWN
DATE: AUGUST 30, 2016
PROJECT: 15150

DRN BY: RUS
DESIG BY: TSG
CHK BY: TTB

INFINITY CREDIT UNION (APPLICANT)
202 LARRABEE ROAD
WESTBROOK, ME 04092

BAXTER BOULEVARD

C2.2