

LEGEND

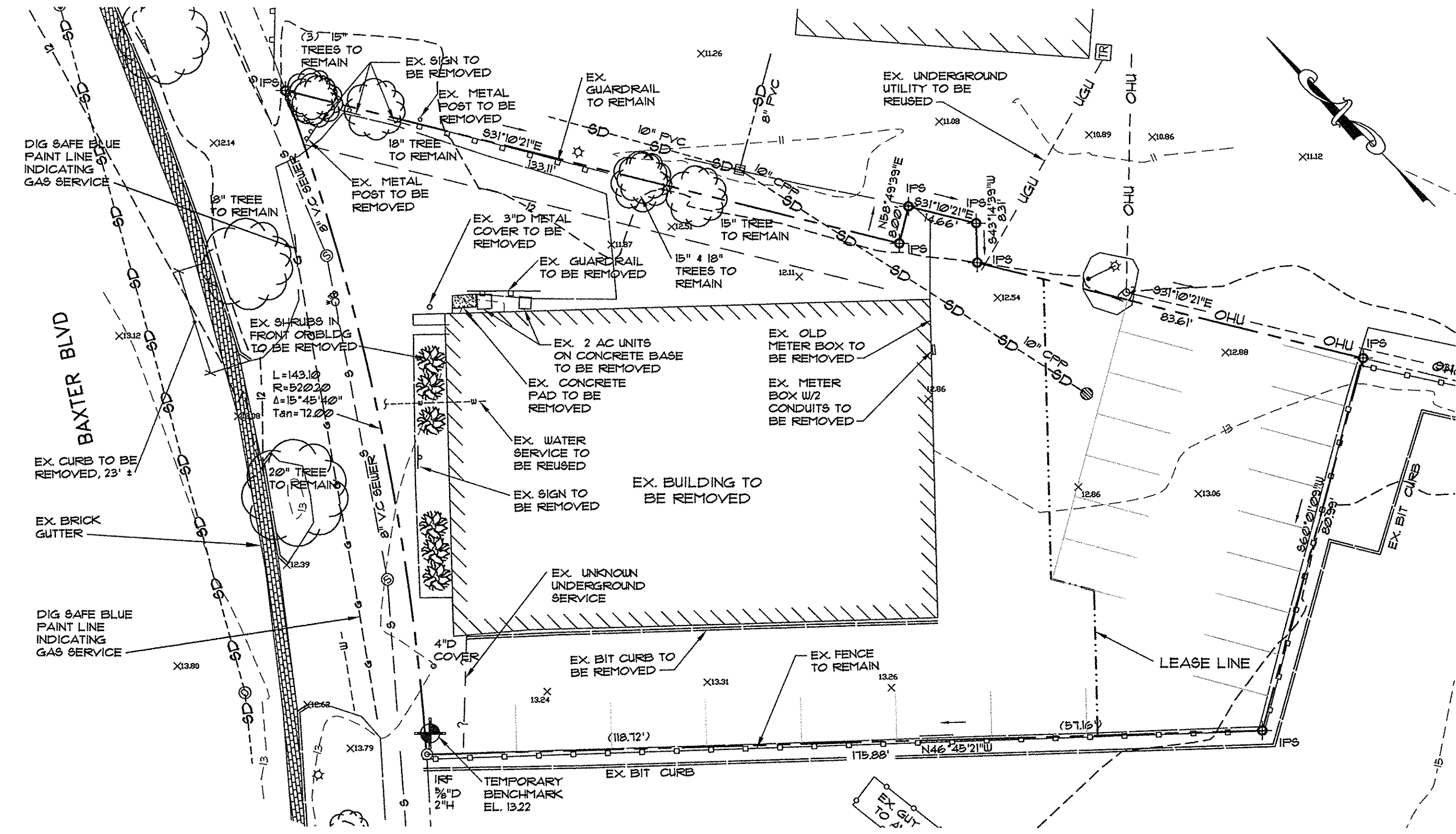
EXISTING

	PROPERTY LINE
	BUILDING SETBACK
	ABUTTERS PROPERTY
	EDGE OF PAVEMENT
	CONTOURS
	BUILDING
	CURB
	GAS LINE
	SANITARY SEWER
	STORM DRAIN
	OVERHEAD UTILITY
	UNDERGROUND UTILITY
	WATER LINE
	SPOT GRADE
	CATCH BASIN
	DRAIN MANHOLE
	SEWER MANHOLE
	UTILITY POLE
	UTILITY POLE W/ GUY WIRE
	SIGN
	TREE / SHRUB
	BOARD FENCE
	CHAINLINK FENCE
	GUARDRAIL
	BENCHMARK
	IRON PIPE FOUND
	IRON PIN SET
	WATER SHUT OFF
	LIGHT POLE
	TRANSFORMER
	COBBLE STONE

BOUNDARY SURVEY BY MAINE SURVEY CONSULTANTS, INC. P.O. BOX 485 HARRISON, MAINE 04040

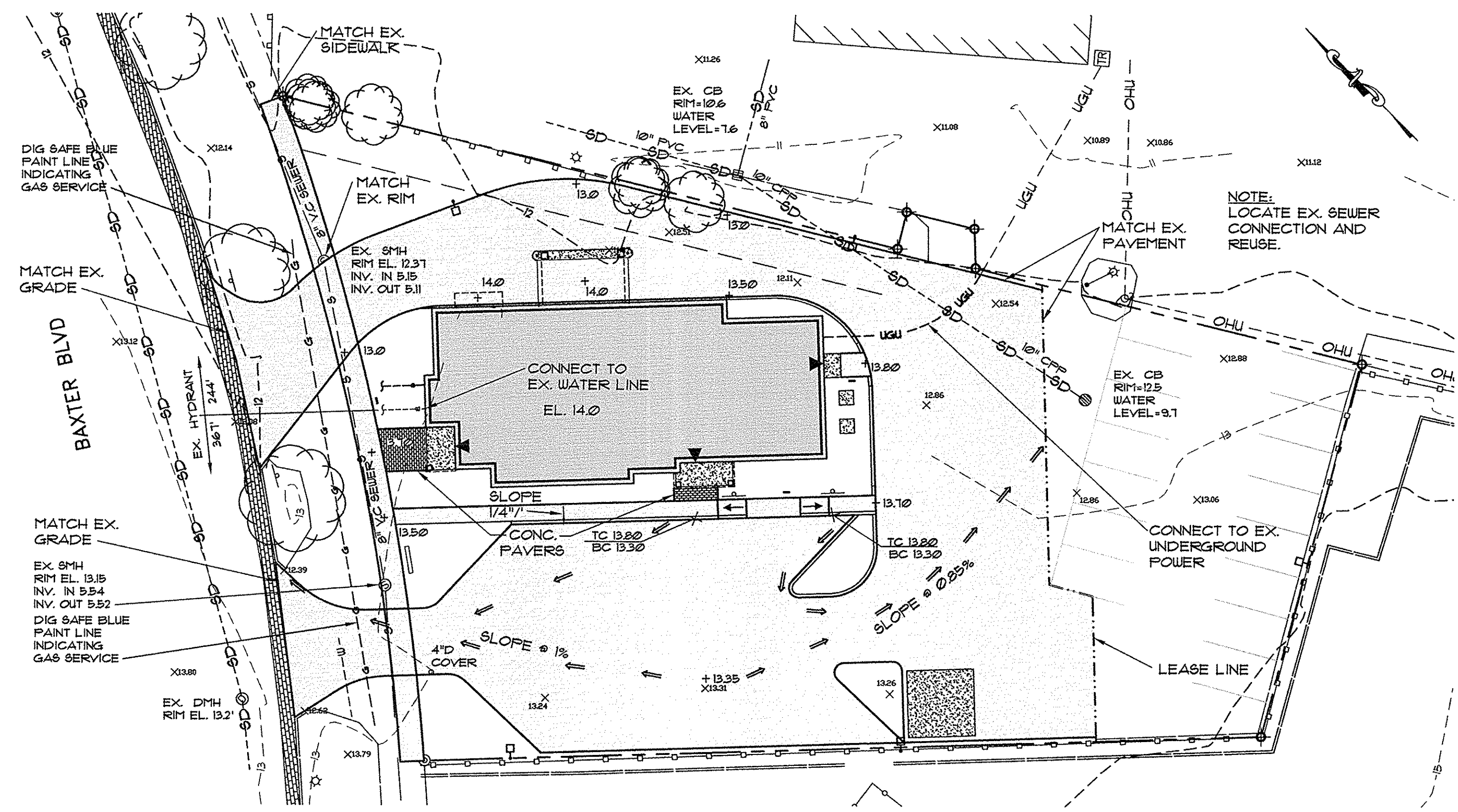
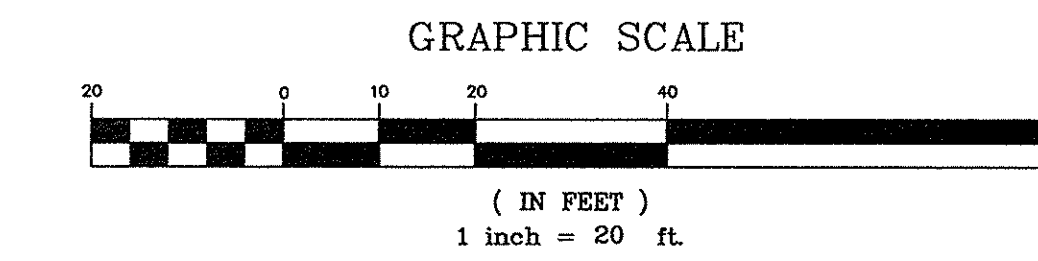
NOTES:

- ELEVATIONS BASED ON GPS OBSERVATIONS AND ADJUSTED TO NGVD 29 WHICH COMPARE WITH ELEVATIONS ON PLAN REFERENCE #4.
 - INVERT ELEVATIONS SHOWN IN PARENTHESES WERE TAKEN FROM PLAN REFERENCE #4.
 - UNDER GROUND UTILITIES WERE NOT LOCATED, CALL DIG SAFE BEFORE ANY EXCAVATION.
- PLAN REFERENCES:**
- RECONSTRUCTION OF HANNAFORD DRIVEWAY AT BAXTER BOULEVARD BY DELUCA-HOFFMAN ASSOCIATES, INC. DATED SEPT. 2011. SHEETS C12 & C20.
 - PLAN OF SUPER SHOP N SAVE PLAZA DATED OCT. 29, 1984 BY HI & EC JORDAN RECORDED IN CCRD FB 148, PG 14.
 - AMENDED BACK COVE SUBDIVISION PLAN DATED MAY 15, 1984 BY HI & EC JORDAN RECORDED IN CORD FB 142, PG 45.
 - PORTLAND WATER DISTRICT POLLUTION ABATEMENT FACILITIES DATED AUGUST 1973 BY CAMP DRESSER & MCKEE INC. CONSULTING ENGINEERS.



EXISTING CONDITIONS & DEMOLITION PLAN

SCALE: 1"=20'

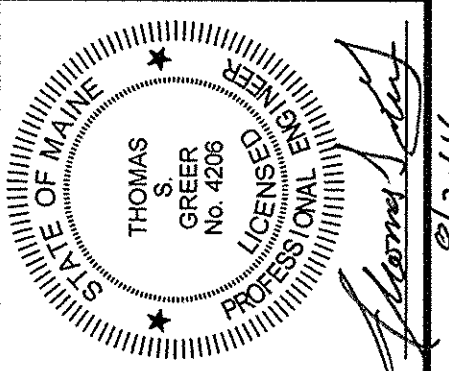


GRADING & UTILITIES PLAN

SEE LEGEND ON C1.1

SCALE: 1"=20'

PINKHAM & GREER
CIVIL ENGINEERS
28 HANNAH AVE. PORTLAND, ME 04103
TEL: 207.781.5242 FAX: 207.781.4245



REV.	DATE	DESCRIPTION

CHABOT STREET, LLC (RECORD OWNER)
100 SILVER STREET
PORTLAND, ME 04101

SCALE: AS SHOWN
DATE: AUGUST 30, 2016
PROJECT: 15150

DRN BY: RJS
DESG BY: TSG
CHK BY: TSG

INFINITY CREDIT UNION (APPLICANT)
202 LARRABEE ROAD
WESTBROOK, ME 04092

BAXTER BOULEVARD
EXISTING CONDITIONS & DEMOLITION
GRADING & UTILITIES PLANS

C1.2