

1 First Floor Plan
SCALE: 1/8" = 1'-0"

1. Seating platforms required stair risers is excess of 7" and varied in height. All stair risers are now 5 1/4" tall and treads are 12" wide. This was accomplished by building-up the low platforms to 10 1/2" from 9" and building-up the high platforms to 21" from 1'-6". In addition, the platforms were reinforced by adding legs, braces, additional 2x6 floor joists thus reducing span from 24" o.c. to 12" o.c.
2. Platform step railings, step lighting (@ .02 foot candles) and platform guards (front and sometimes sides) have been shown.
3. Code compliant emergency lighting, and exit signage, within the assembly space and along exit access corridors.
4. The exit access for the second means of egress passed through a large rehersal room which is non-compliant. A proposed exit access corridor is shown and the rehersal room is separated by means of a one hour fire rated wall. The path of travel also eliminates a 6" step by adding a ramp.
5. The dead end corridor was resolved by relocating a door to shorten the corridor to less than 20'.

BUILDING DATA fire/life safety

Requirement	BCQA 1999 /IBC 2009	NFPA 101 2000
-------------	---------------------	---------------

BUILDING DATA fire/life safety

Requirement	BCQA 1999 /IBC 2009	NFPA 101 2000
-------------	---------------------	---------------

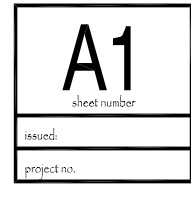
BUILDING DATA fire/life safety

Requirement	BCQA 1999 /IBC 2009	NFPA 101 2000
-------------	---------------------	---------------

A CONSTRUCTION TYPE: 3B
B AUTOMATIC SPRINKLERS: NONE
C AUTOMATIC FIRE ALARM SYSTEMS: NONE Required when Occupants > 300
D BUILDING HEIGHT: 1 STORY
E BUILDING AREA/FLOOR: = 6,690 S.F.
F1 OCCUPANCY GROUP ASSEMBLY-HEATER
F2 OCCUPANCY GROUP ASSEMBLY-7 s.t. / Person
G1 MEANS OF EGRESS LIGHTING: 2 fc During Performance
G2 EMERGENCY LIGHTING
G3 EXIT MARKING
H1 EGRESS CAPACITY STAIRS (un-sprinkled)
H2 MINIMUM STAIR EGRESS WIDTH: < 50 Persons = 36"
H3 EGRESS CAPACITY HORIZONTAL (un-sprinkled)
H4 MINIMUM HORIZONTAL ACCESS: > 50 Occupants

I NUMBER OF EXITS: Occupant Load < 500, Entrance Door 1 Fire Safety 122.3.3 requires that Main Entrance Doors accommodate 50% of occupant load. A 36" wide door accommodates 180 persons (indicated occupant load 100 persons). See also BEC 1028.2
J1 TRAVEL DISTANCE (un-sprinkled)
J2 COMMON PATH OF TRAVEL (un-sprinkled)
J3 MAX. DEAD END (un-sprinkled)
J4 COMMON PATH OF TRAVEL (un-sprinkled)
P Min. Width of Aisle with Stairs
O Row Access Serving < 15 seats
P Horizontal for Aisles 4/3 seats
P Seat Stability
See Note #1
1022.6 / 1028.9 122.5.6.1
1022.6 / 1028.10 122.5.5.2
1022.6 / 1028.13 122.5.6.7
N.R. < 201 seats
See Note #1
1022.6 / 1028.13 122.5.6.7

1 EXTERIOR WALLS LOAD BEARING
2 FINE WALLS / PARTY WALL (FIRE PARTITIONS)
3A ENCLOSURE OF EXITS (1 hour if less than 4 stories)
3B ENCLOSURE OF EXITS (1 hour if less than 4 stories)
3C ENCLOSURE OF SHAFTS (1 hour if less than 4 stories)
3D MAX USE SEPARATION
3E SMOKE BARRIERS (SMOKE PARTITIONS)
3F SMOKE BARRIERS (SMOKE PARTITIONS)
4 EXIT ACCESS CORRIDORS (NFPA 7.3.1.1 50 Persons)
5 FIRE DOOR & OPENING PROTECTION RAININGS
6 HOUR CORRIDOR (not required 20 Min. Door) 1 hour other Fire Barrier requires 45 Min. Door
7 NON-LOAD BEARING PARTITIONS
8 LOAD BEARING PARTITIONS
9 STRUCTURAL MEMBERS
10 FLOOR CONSTRUCTION
11 ROOF CONSTRUCTION
12A BOILER/PURCHASE RM
12B STORAGE ROOM < 100 s.f.
12C Assembly Accessory Rooms, Workshops, storeroom, dressing room. (not including stages > 1000 s.f.)
13A DRAFTSTOPPING ceiling/floor for Cornt. Type 3,4,5
3000 s.f.
721.7.1.3 / **717.4.5**



CONSTRUCTION SET

Lucid Stage
 Baxter Boulevard Extension, Portland ME
 First Floor Plan

revision #/ date	Revision Reason
date 10-19-10	drawn by 1/4" = 1'-0"



Clyde Blackwell Architect
 Tel. (207) 671-9904
 361 Ludlow Street, Portland ME 04102