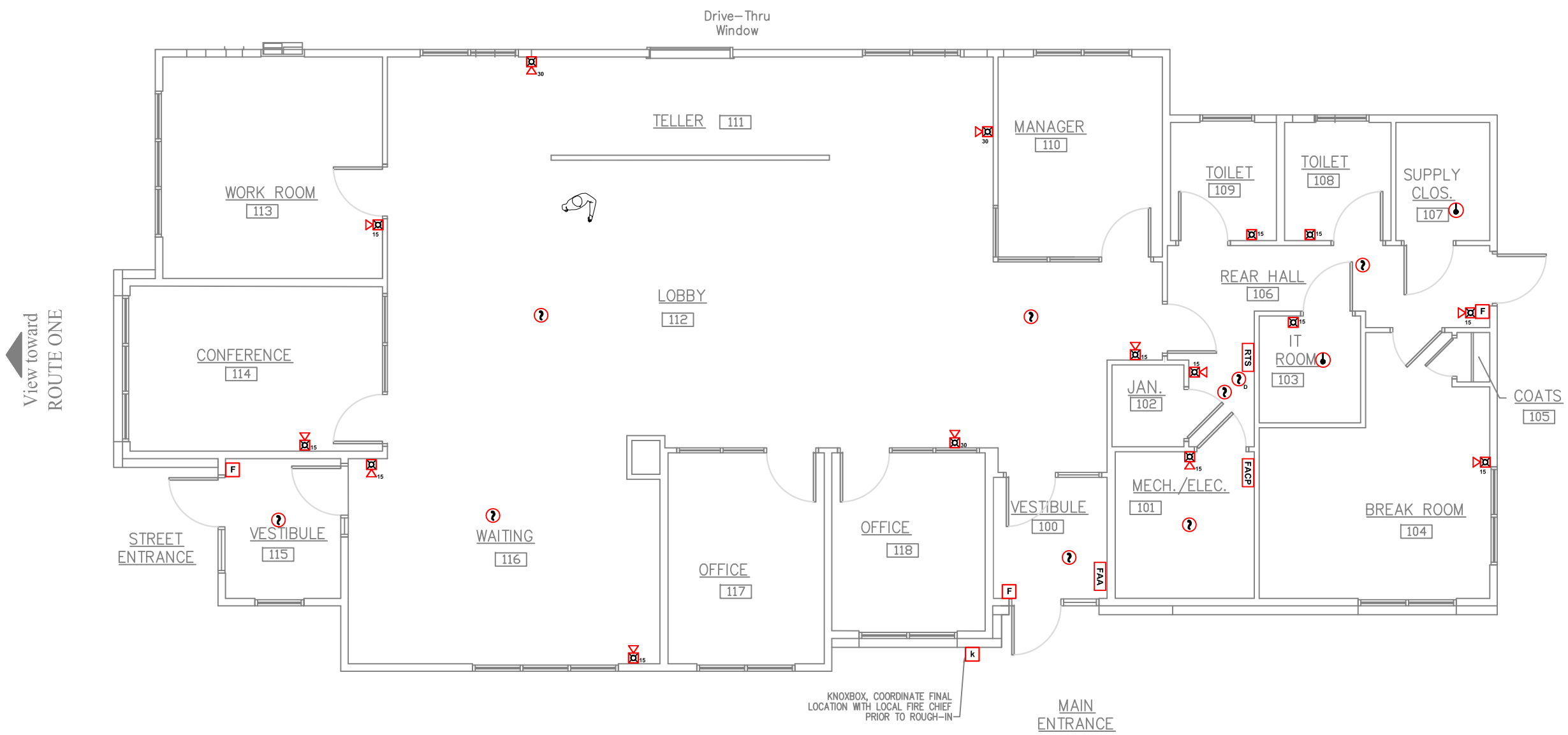


LEGEND:

RISER DIAG SYM	NFPA SYMBOL*	DESCRIPTION	CATALOG #
FACP	FACP	Fire Alarm Control Panel	EST IO64RD
FAA	FAA	Remote Annunciator	RLCD-CR
F	P	Addressable Manual Station	SIGA-278
?	?	Addressable Smoke Detector w/ Base	SIGA-PD SIGA-SB
?	?	Addressable Duct Smoke Detector	SIGA-SD
?		Addressable Heat Detector	SIGA2-HFS
FS		Sprinkler Water Flow Switch	FBO
TS		Sprinkler Tamper Switch	FBO
RTS	RTS	Remote Test Switch	SD-TRK
PR1	PR1	Multi-Voltage Relay	PR1
CTx	AIM	Addressable Input Module (x Denotes Single or Double Input)	SIGA-CTx
CR	AOM	Addressable Control Module	SIGA-CR
⊠ #	⊠	Strobe Unit - White Wall Mount Adjustable Candela (# indicates Candela Rating)	G1RF-VM
⊠ #	⊠	Horn/Strobe Unit - White Wall Mount- Adjustable Candela (# indicates Candela Rating)	G1RF-HDVM

* NFPA 170 (2009)
 Tables: 6.5, 6.7-1, 6.7.2, & 6.7.3
 *All Symbols May Not Be Used



Infinity Credit Union
 Portland, ME
 Floor Plan
 First Floor

DWG No. FA-003

R.B. Allen Co., Inc.
 P.O. BOX 170
 131 LAKE ST
 NO. HAMPTON, NH 03862
 1-800-258-7284



EDWARDS SYSTEM TECHNOLOGY

Infinity Credit Union
 Portland, Maine
 Floor Plan
 First Floor

JOB NAME:

REV.	DESCRIPTION	DATE	DRWN:	TRD:
0	Original Issue	1/17	kmb	TRD

SCALE: 1/8" = 1'0"

PO No.
 Infinity Credit Union
 Portland, ME
 Floor Plans
 1st Floor
 DWG No. FA-003