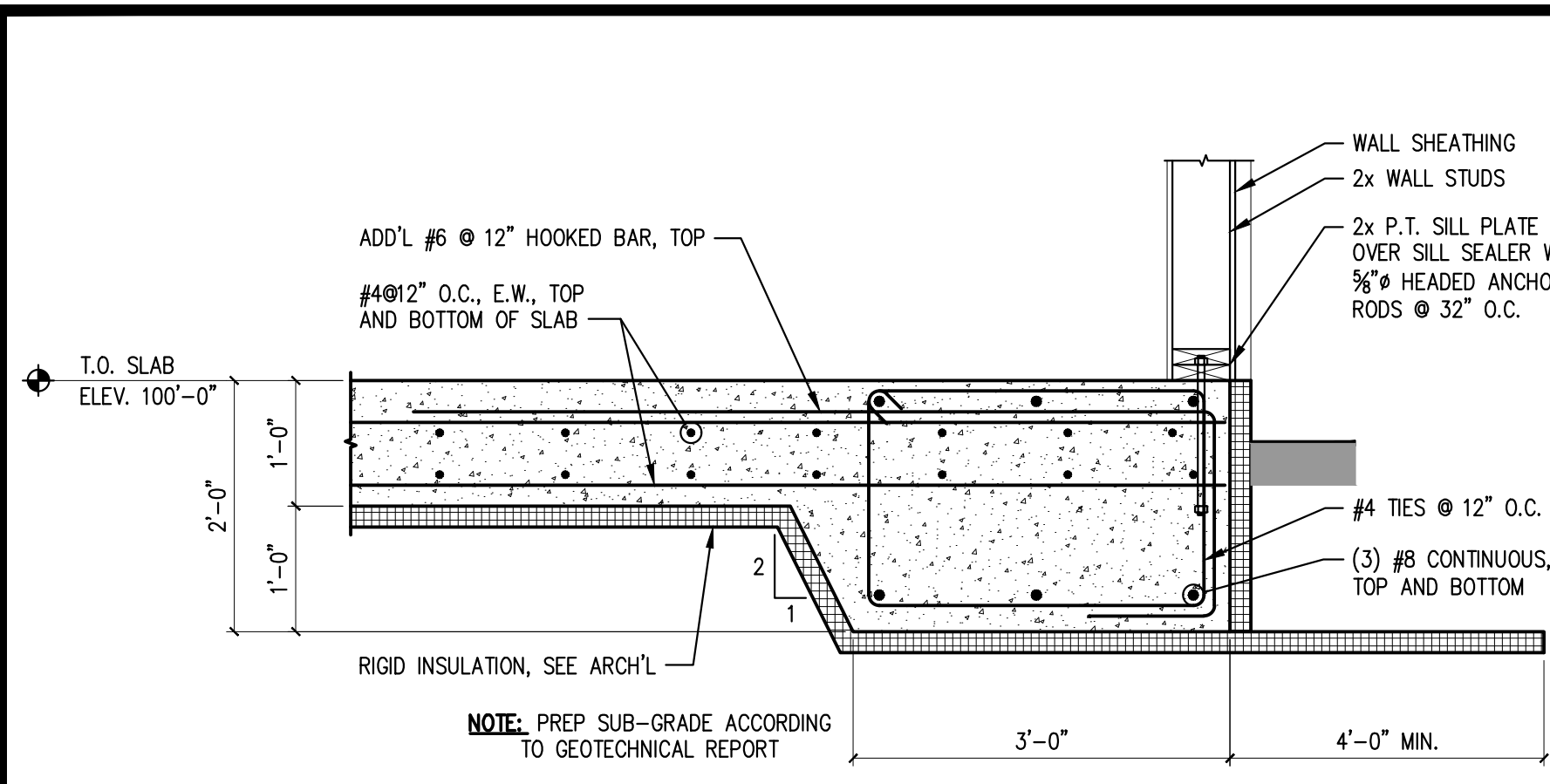
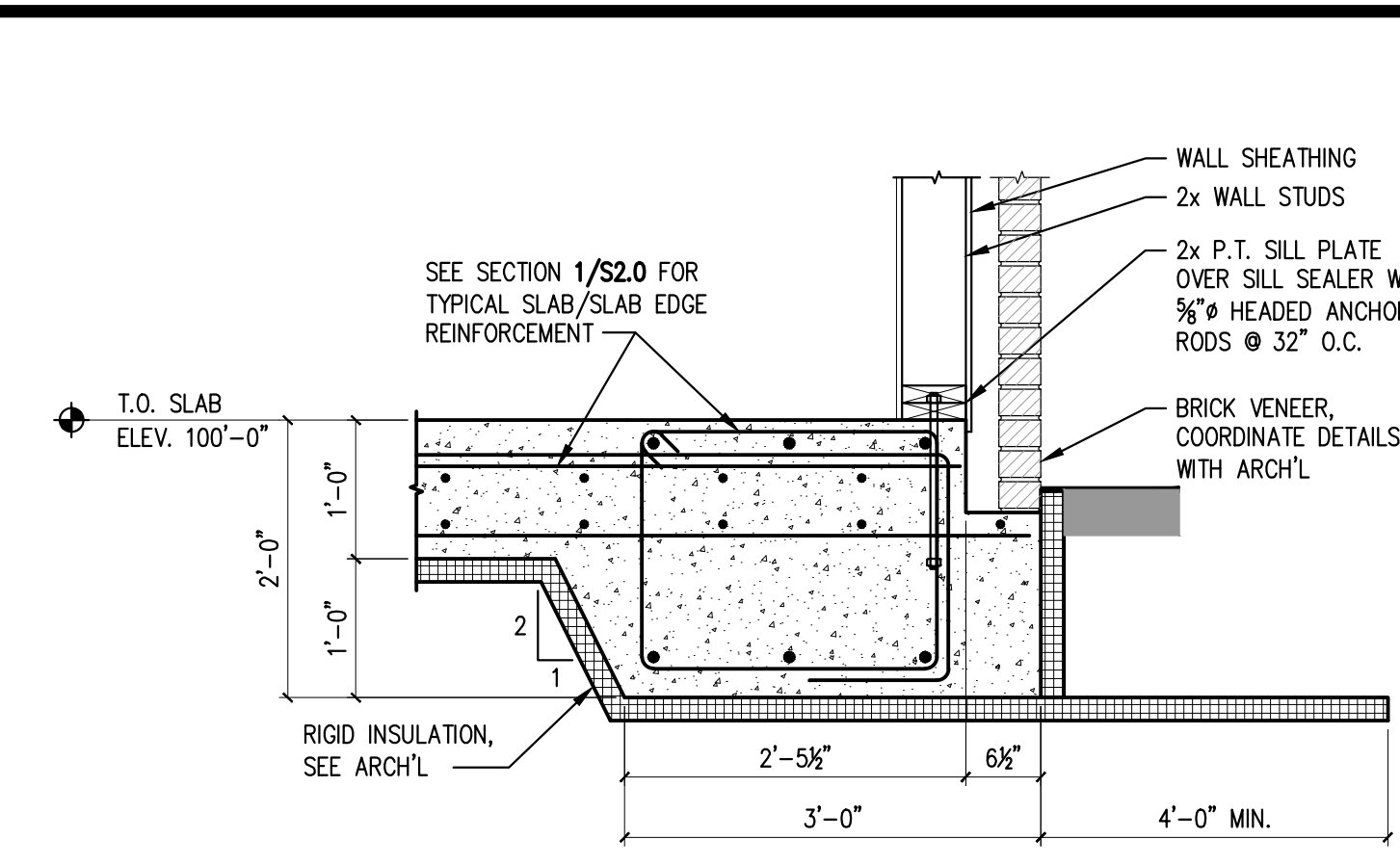


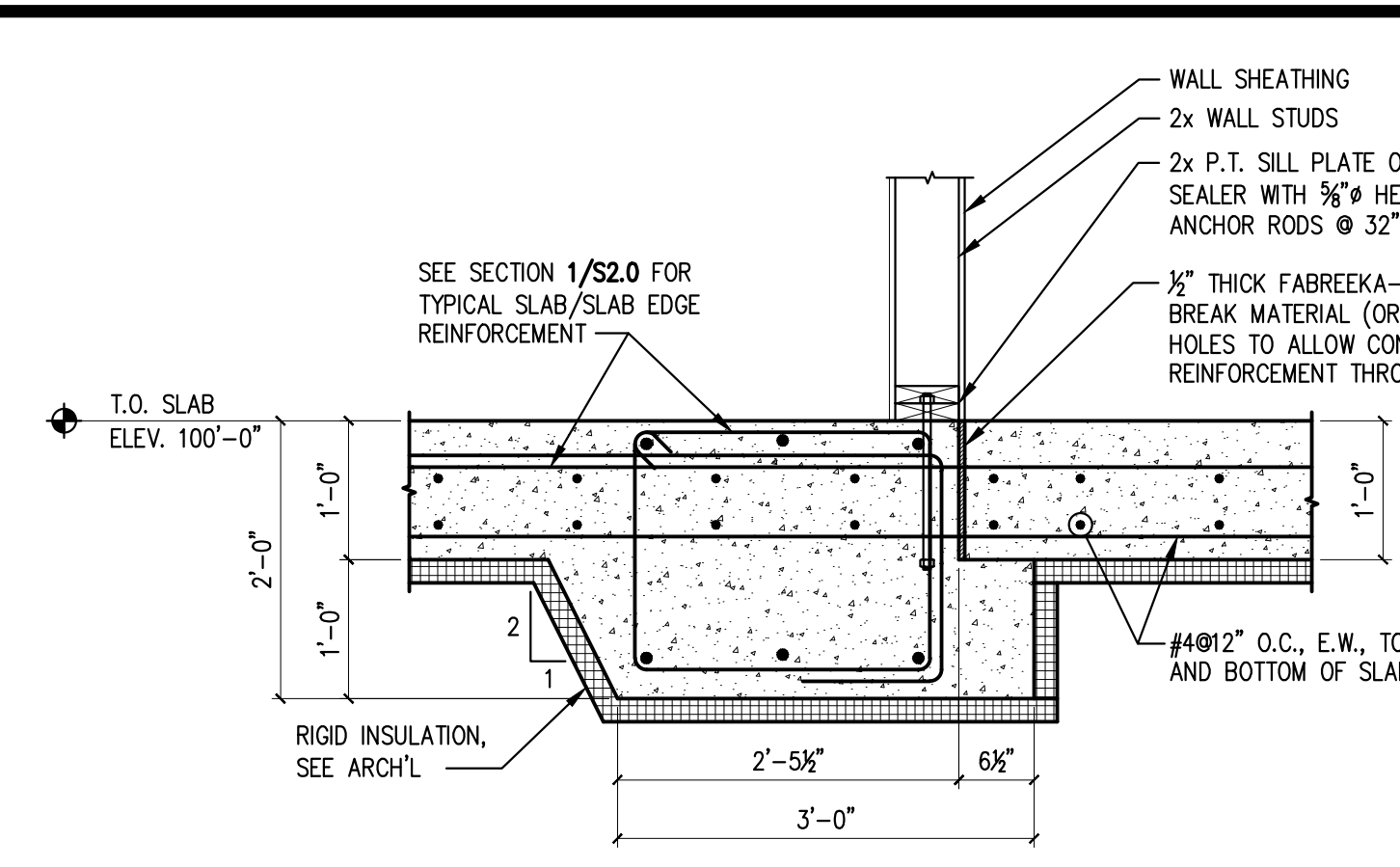
PRINTED: Oct 21, 2016



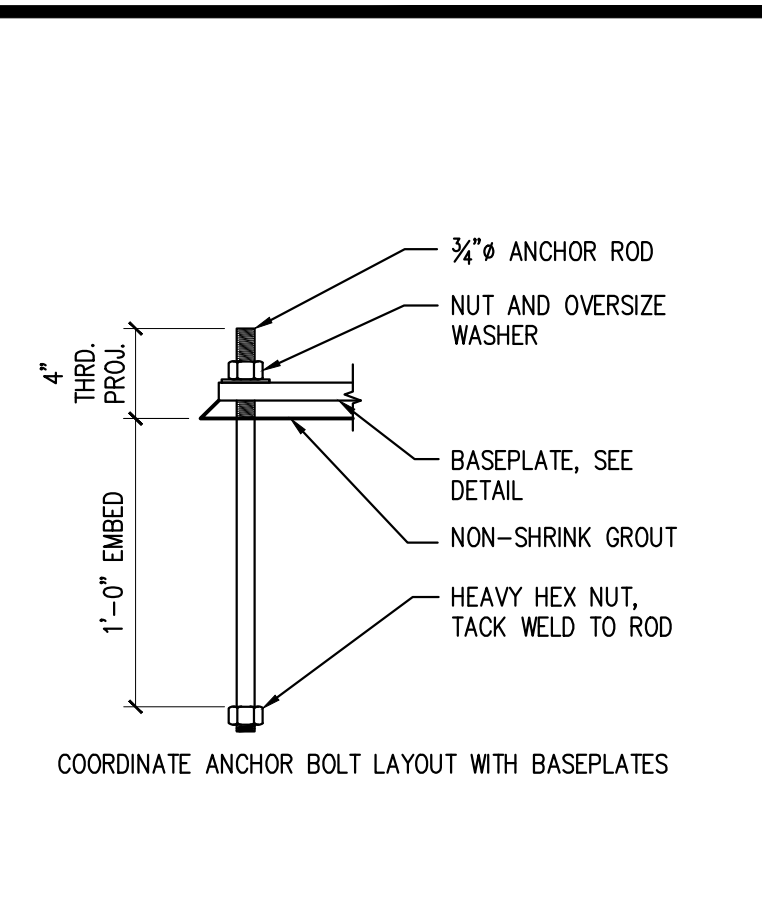
1 SECTION  
3/4" = 1'-0"



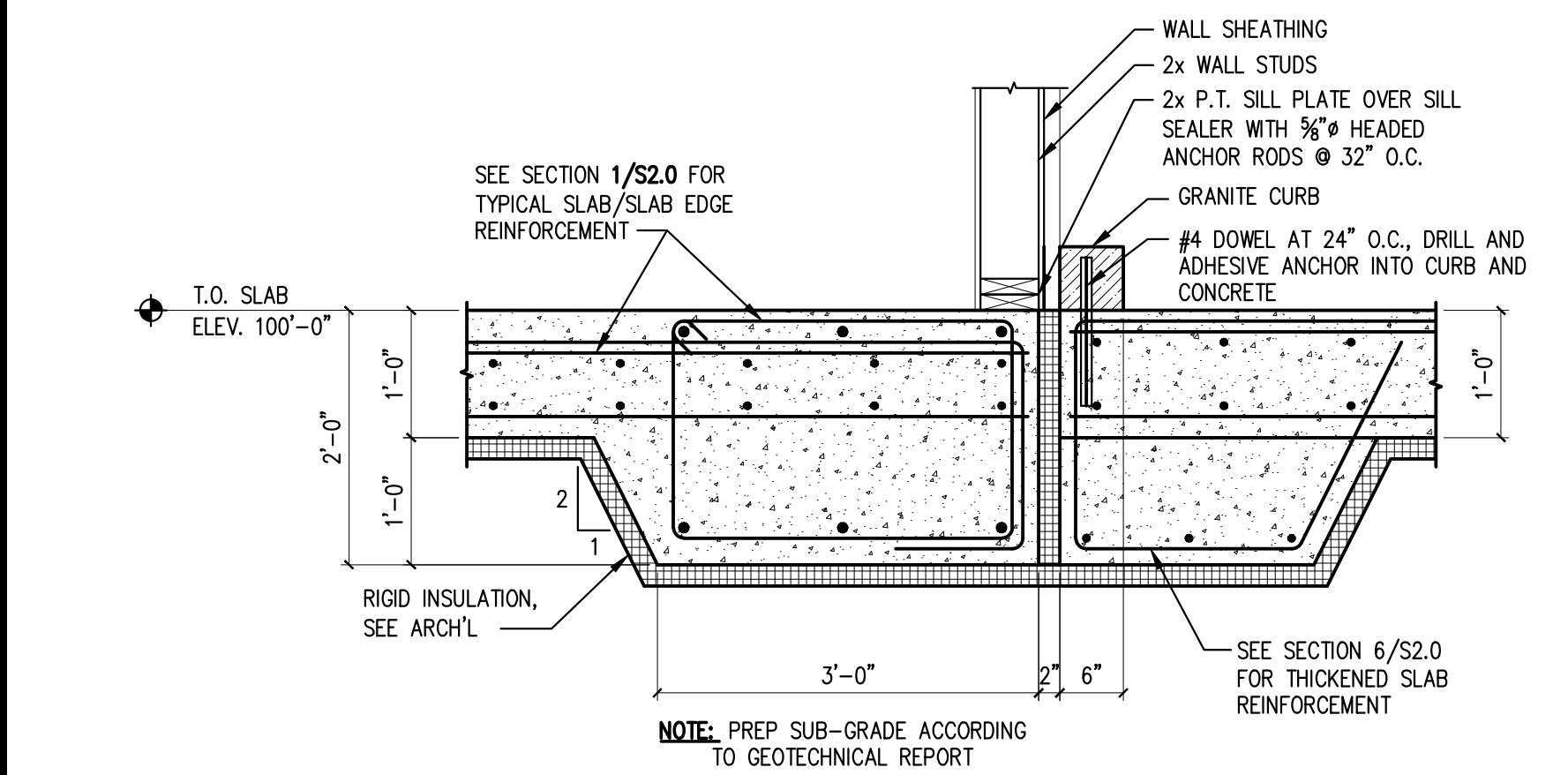
2 SECTION  
3/4" = 1'-0"



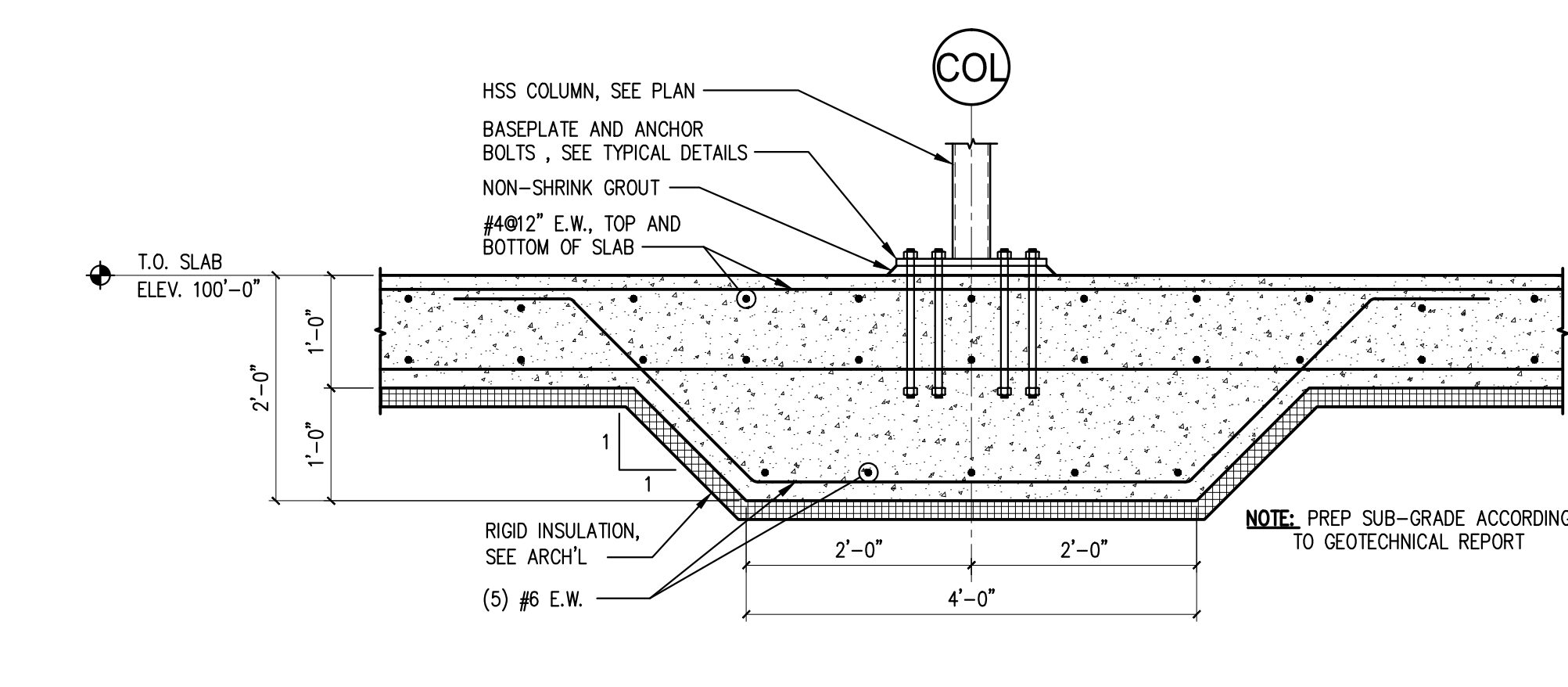
3 SECTION  
3/4" = 1'-0"



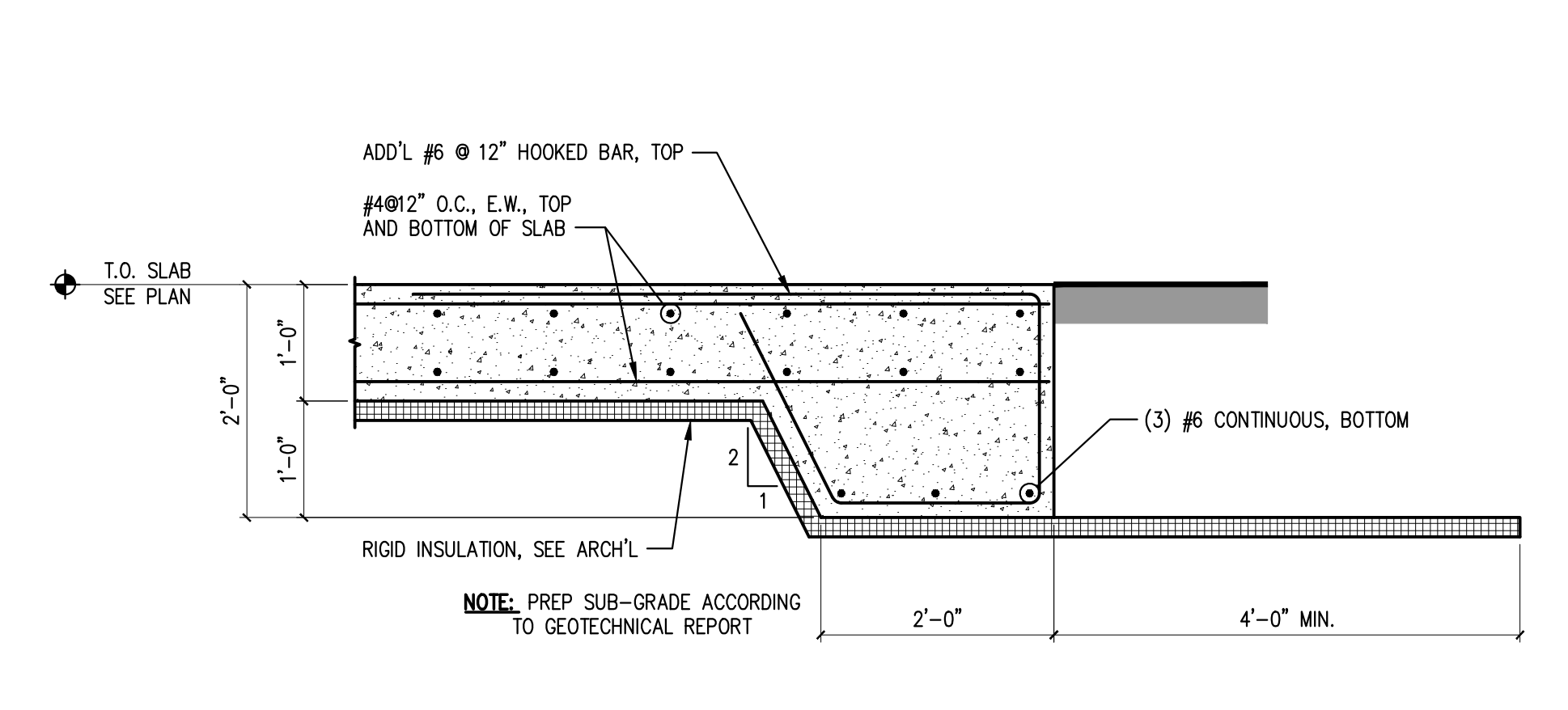
TYPICAL ANCHOR BOLT DETAIL  
SCALE: NTS



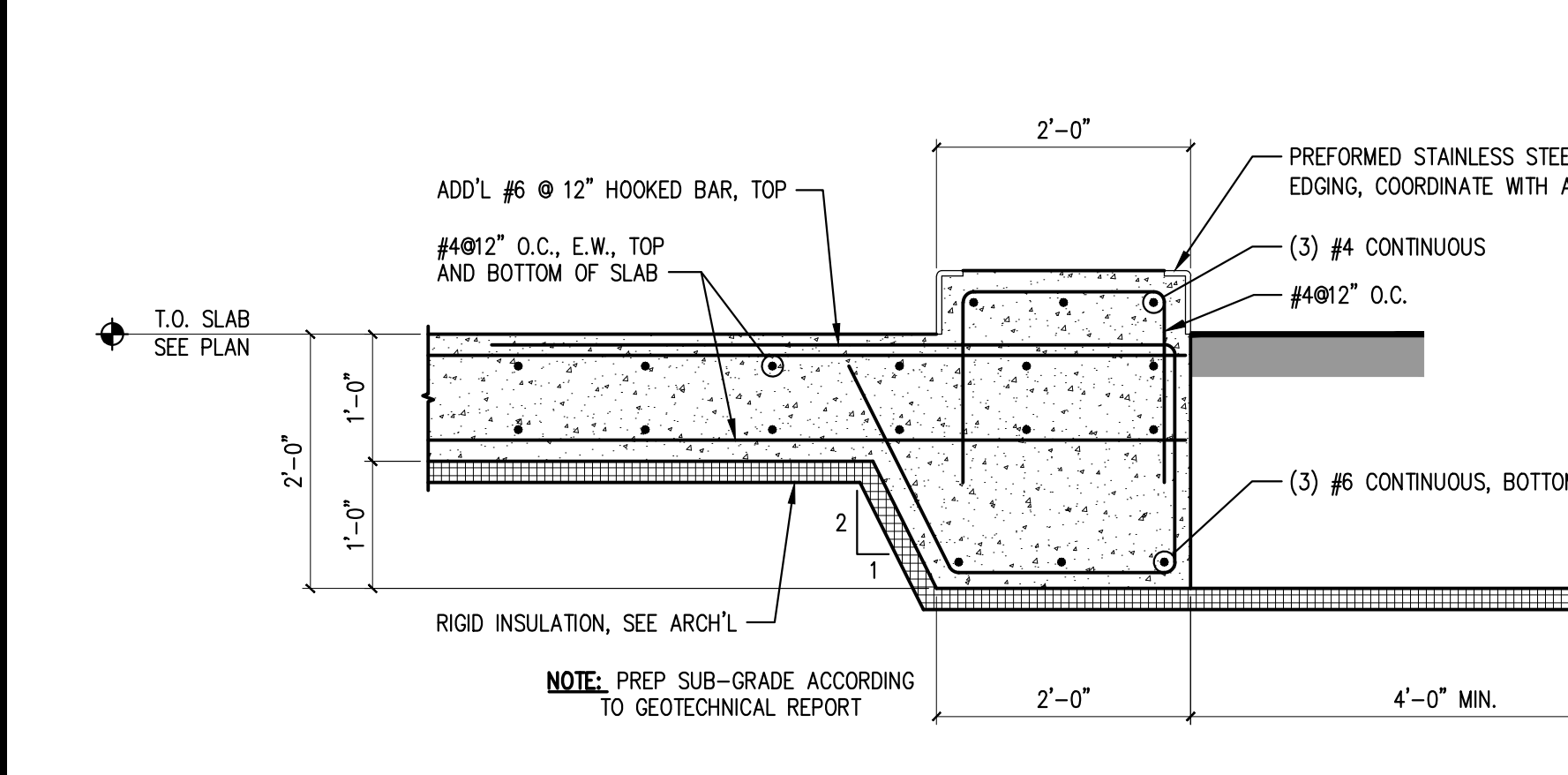
4 SECTION  
3/4" = 1'-0"



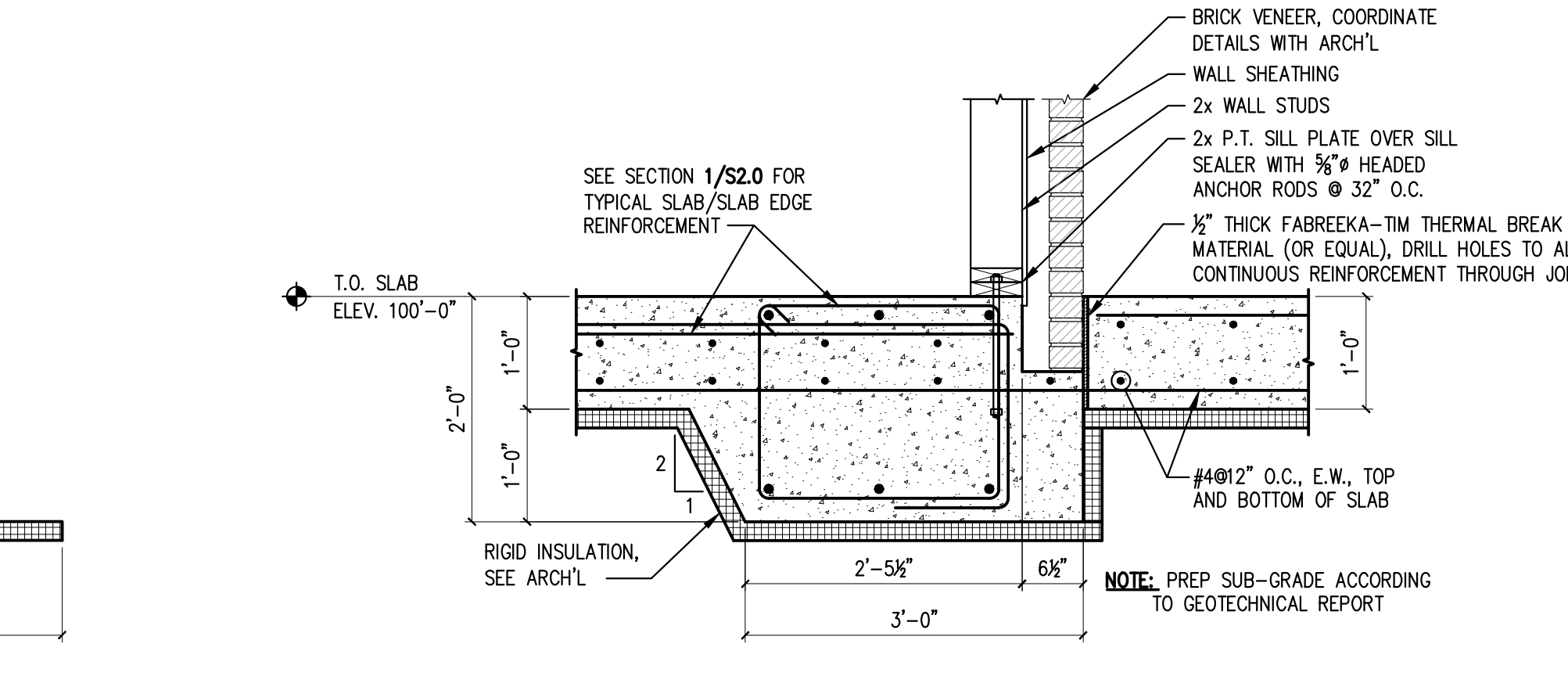
5 SECTION  
3/4" = 1'-0"



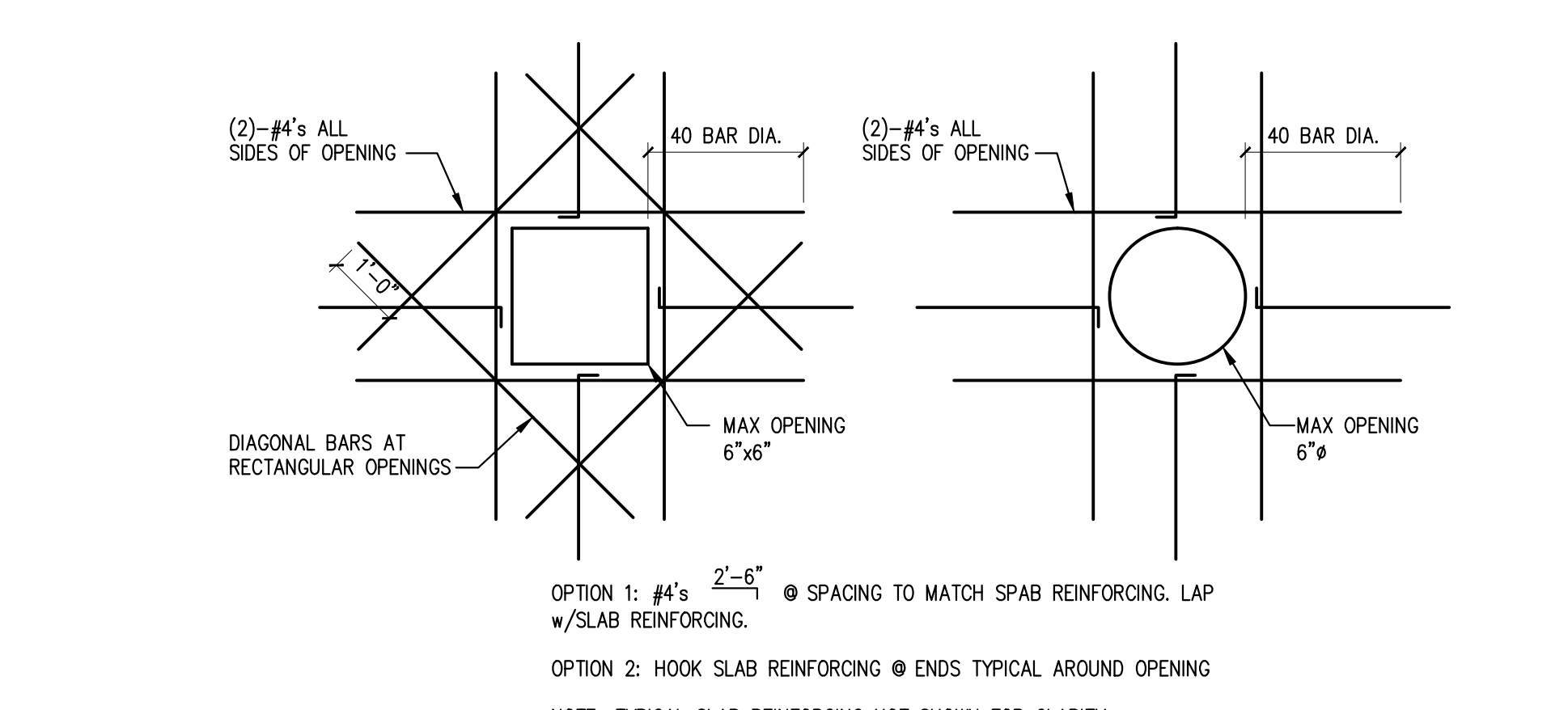
6 SECTION  
3/4" = 1'-0"



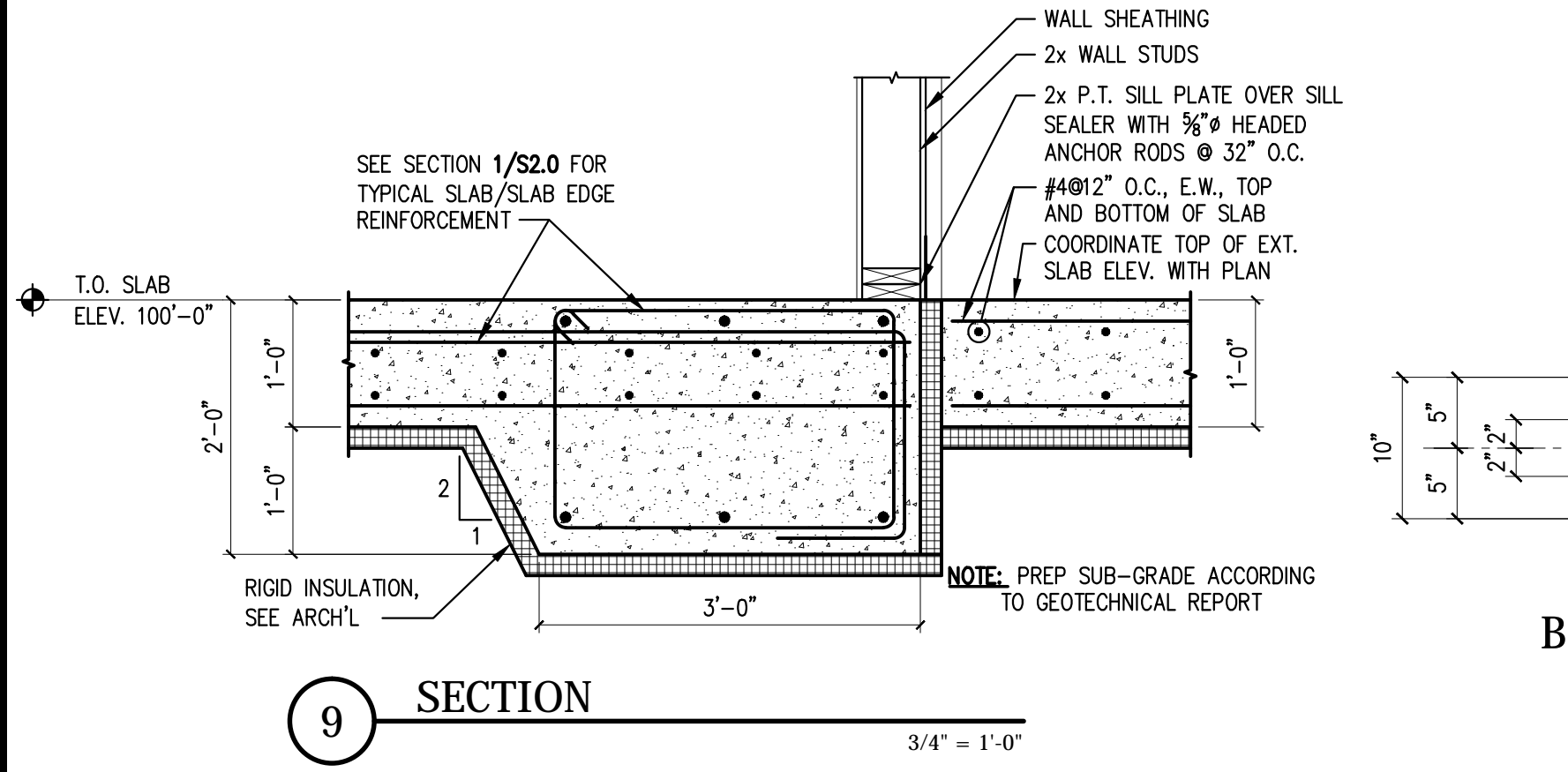
7 SECTION  
3/4" = 1'-0"



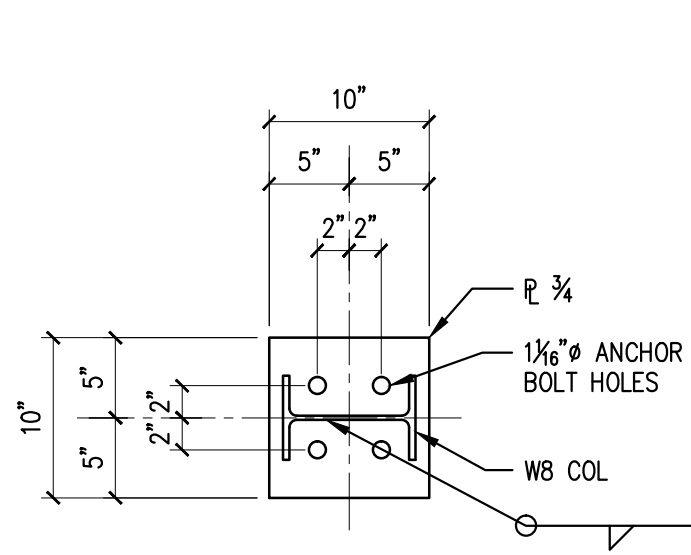
8 SECTION  
3/4" = 1'-0"



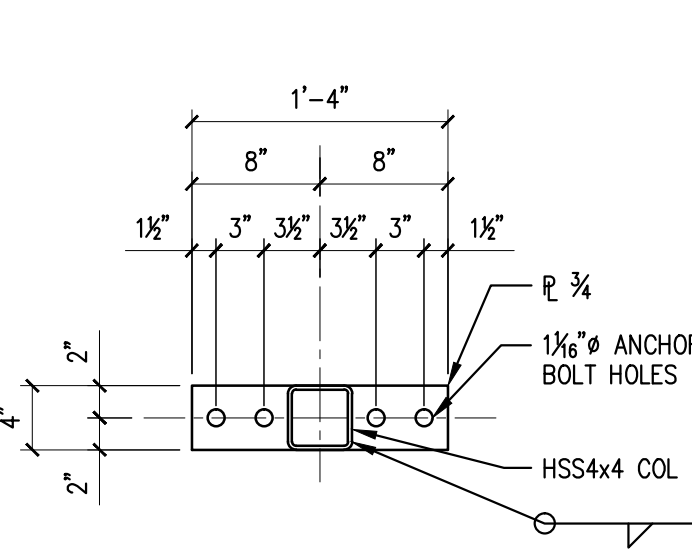
TYPICAL OPENING IN SLAB DETAIL  
SCALE: NTS



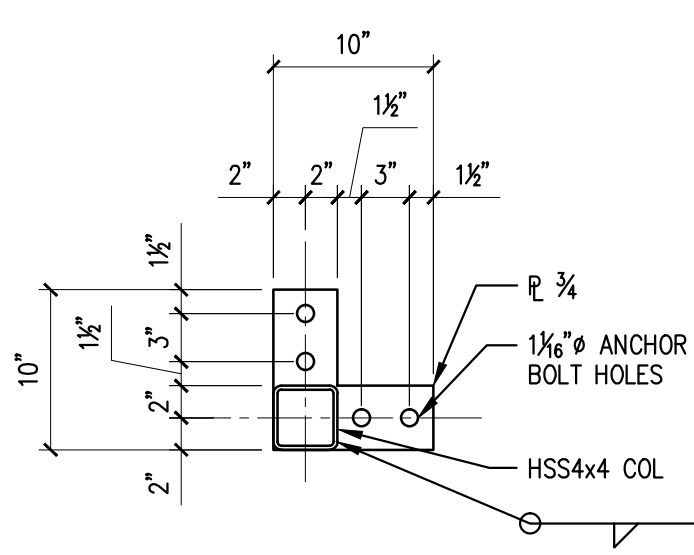
9 SECTION  
3/4" = 1'-0"



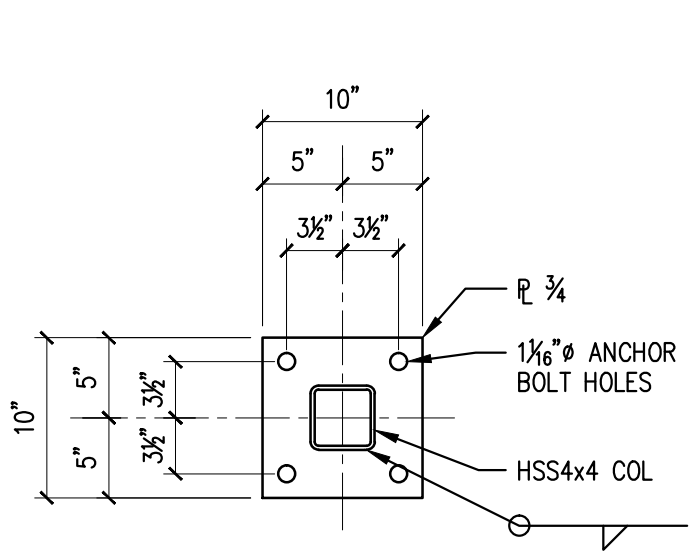
BP TYPE "A"



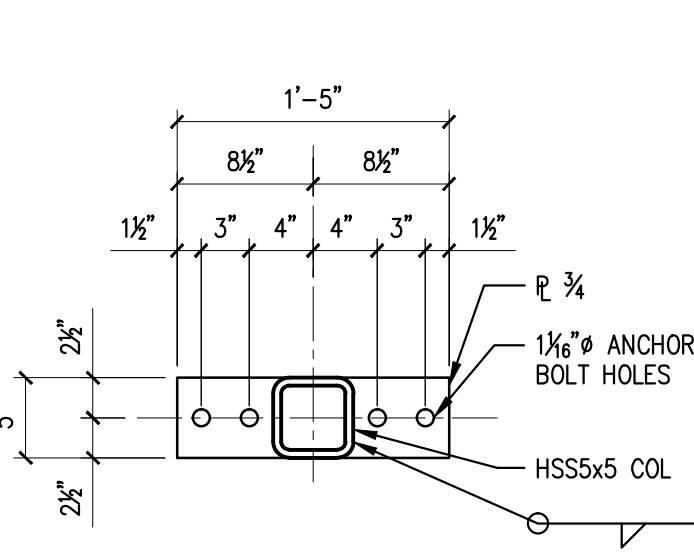
BP TYPE "B"



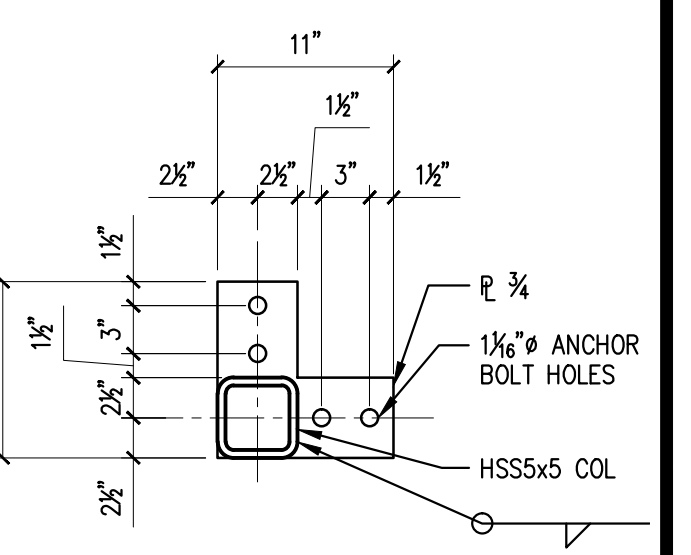
BP TYPE "C"



BP TYPE "D"



BP TYPE "E"

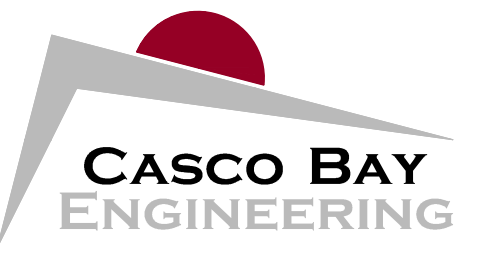


BP TYPE "F"

TYPICAL BASEPLATE DETAILS

COORDINATE ORIENTATION WITH PLAN

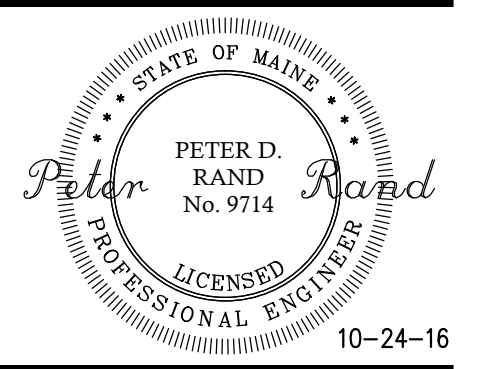
SCALE: NTS



424 Fore Street  
Portland, ME 04101  
Phone 207.842.2800  
Fax 207.842.2828  
www.cascobayengineering.com

CLIENT:  
TLA, Inc.

400 U.S. ROUTE 1, SUITE A SOUTH  
FALMOUTH, MAINE 04105



INFINITY CREDIT UNION  
 29 BAXTER BOULEVARD  
 PORTLAND, MAINE  
 NEW COMMERCIAL BUILDING

No.	DESCRIPTION	ISSUED	DR.	CHK.	DATE
			BY	BY	
A	ISSUED FOR PERMIT		PR	ED	9-20-16
B	90% ISSUED FOR CLIENT REVIEW		PR	ED	10-17-16
0	ISSUED FOR CONSTRUCTION		PR	ED	10-24-16

SHEET TITLE:

TYPICAL CONCRETE  
DETAILS AND  
SECTIONS

DESIGNED: PR  
DRAWN: PR  
DATE: 08-29-16  
PROJECT NUMBER: 16-090

S2.0