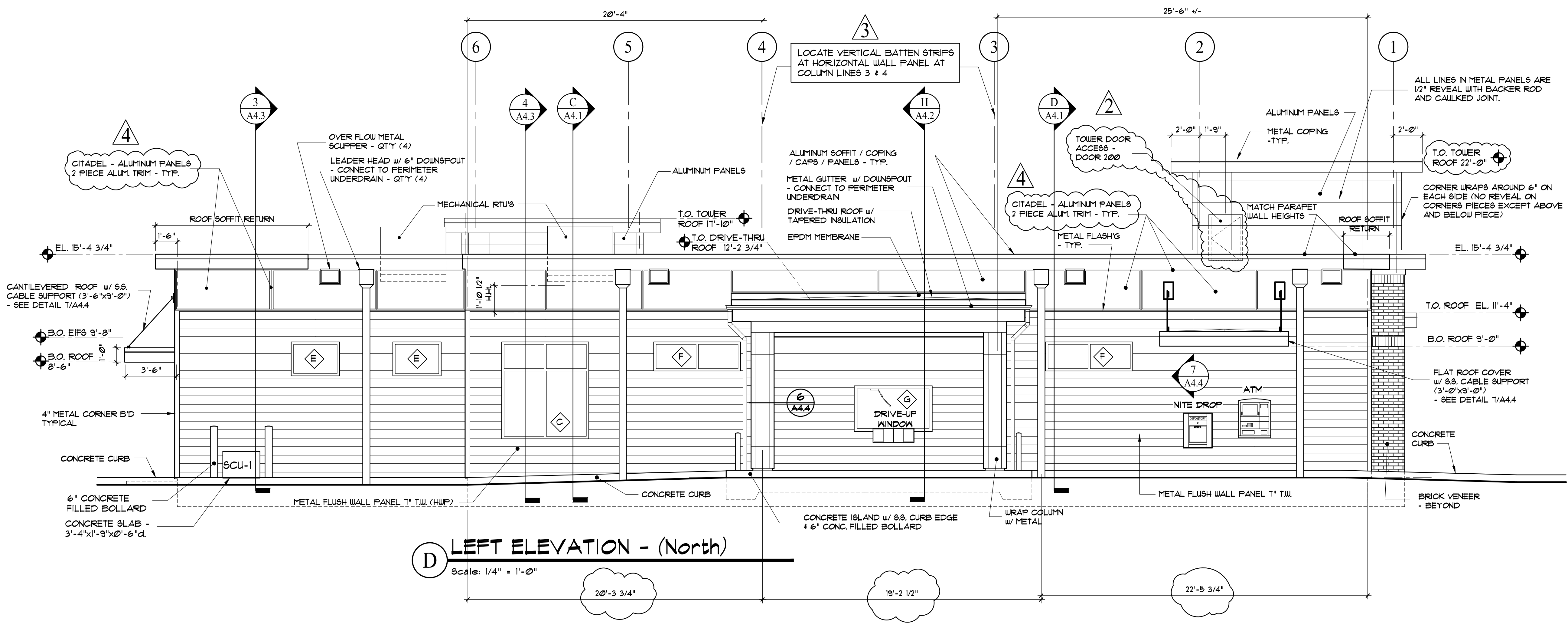


**(C) REAR ELEVATION - (East)**  
Scale: 1/4" = 1'-0"



**(D) LEFT ELEVATION - (North)**  
Scale: 1/4" = 1'-0"

Rev. No.	Date	Description	Drawn by: JFD
4	04-04-17	REPLACE FIBER CEMENT PANELS WITH CITADEL ALUMINUM PANELS AND ALUM. (2) PIECE TRIM	
3	03-02-17	SIDING REVISIONS	
2	02-16-17	SIGN LOCATION-RELOCATE ACCESS D'R	
1	12-13-16	REVISION	

**ISSUED FOR CONSTRUCTION**

Infinity Credit Union  
29 Baxter Boulevard  
Portland, ME  
ELEVATIONS

**A2.2**  
sheet number  
issued: 10/24/16  
project no. 1605