

LEGEND

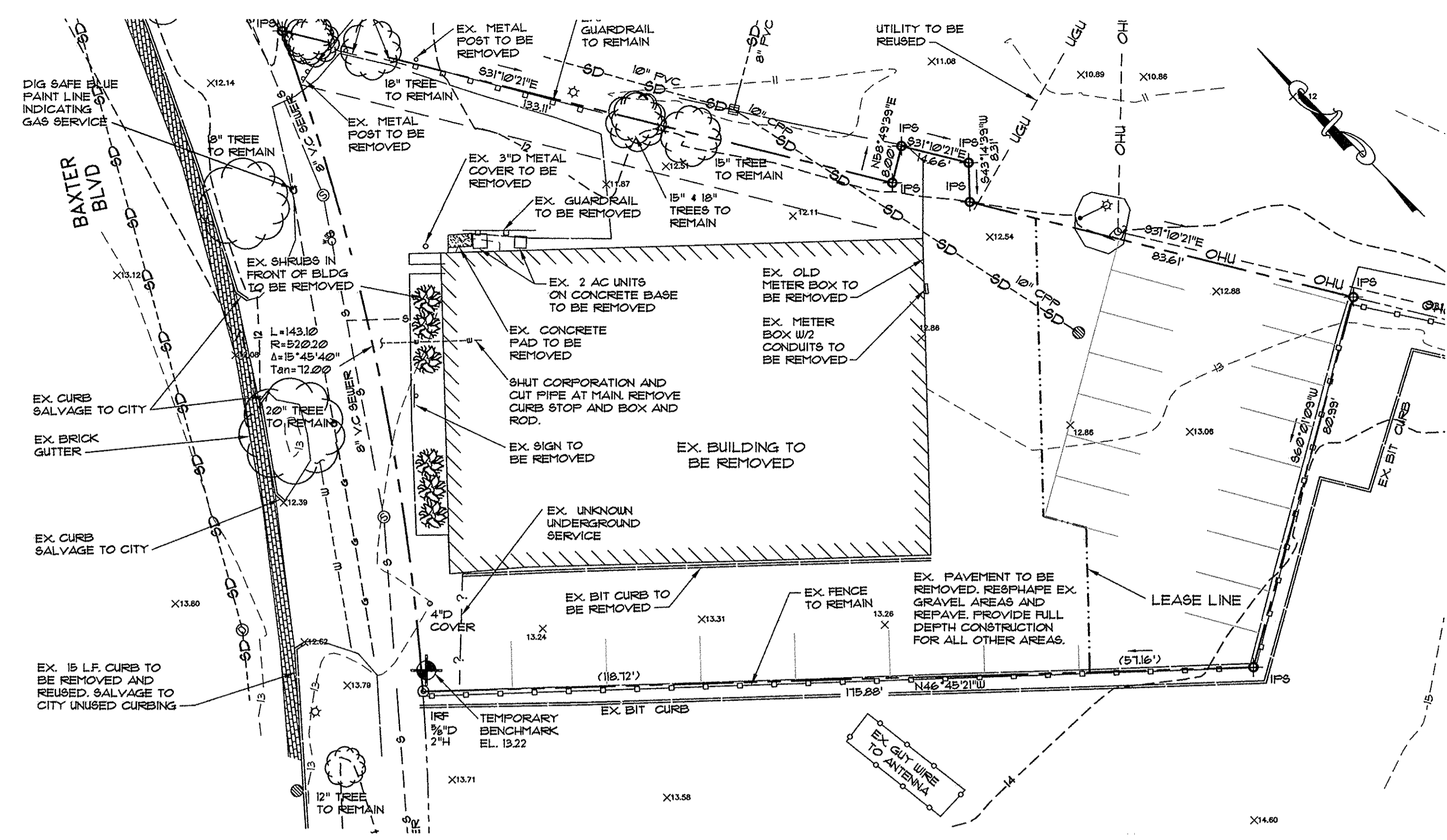
EXISTING

- — — — — PROPERTY LINE
- — — — — BUILDING SETBACK
- — — — — ABUTTERS PROPERTY
- — — — — EDGE OF PAVEMENT
- — — — — CONTOURS
- — — — — BUILDING
- — — — — CURB
- — — — — GAS LINE
- — — — — SANITARY SEWER
- — — — — STORMDRAIN
- — — — — OHU
- — — — — UNDERGROUND UTILITY
- — — — — WATER LINE
- — — — — SPOT GRADE
- — — — — CATCH BASIN
- — — — — DRAIN MANHOLE
- — — — — SEWER MANHOLE
- — — — — UTILITY POLE
- — — — — UTILITY POLE W/ GUY WIRE
- — — — — SIGN
- — — — — TREE / SHRUB
- — — — — BOARD FENCE
- — — — — CHAINLINK FENCE
- — — — — GUARDRAIL
- — — — — BENCHMARK
- — — — — IRON PIPE FOUND
- — — — — IRON PIN SET
- — — — — WATER SHUT OFF
- — — — — LIGHT POLE
- — — — — TRANSFORMER
- — — — — COBBLE STONE

BOUNDARY SURVEY BY MAINE SURVEY CONSULTANTS, INC. P.O. BOX 425 HARRISON, MAINE 04040

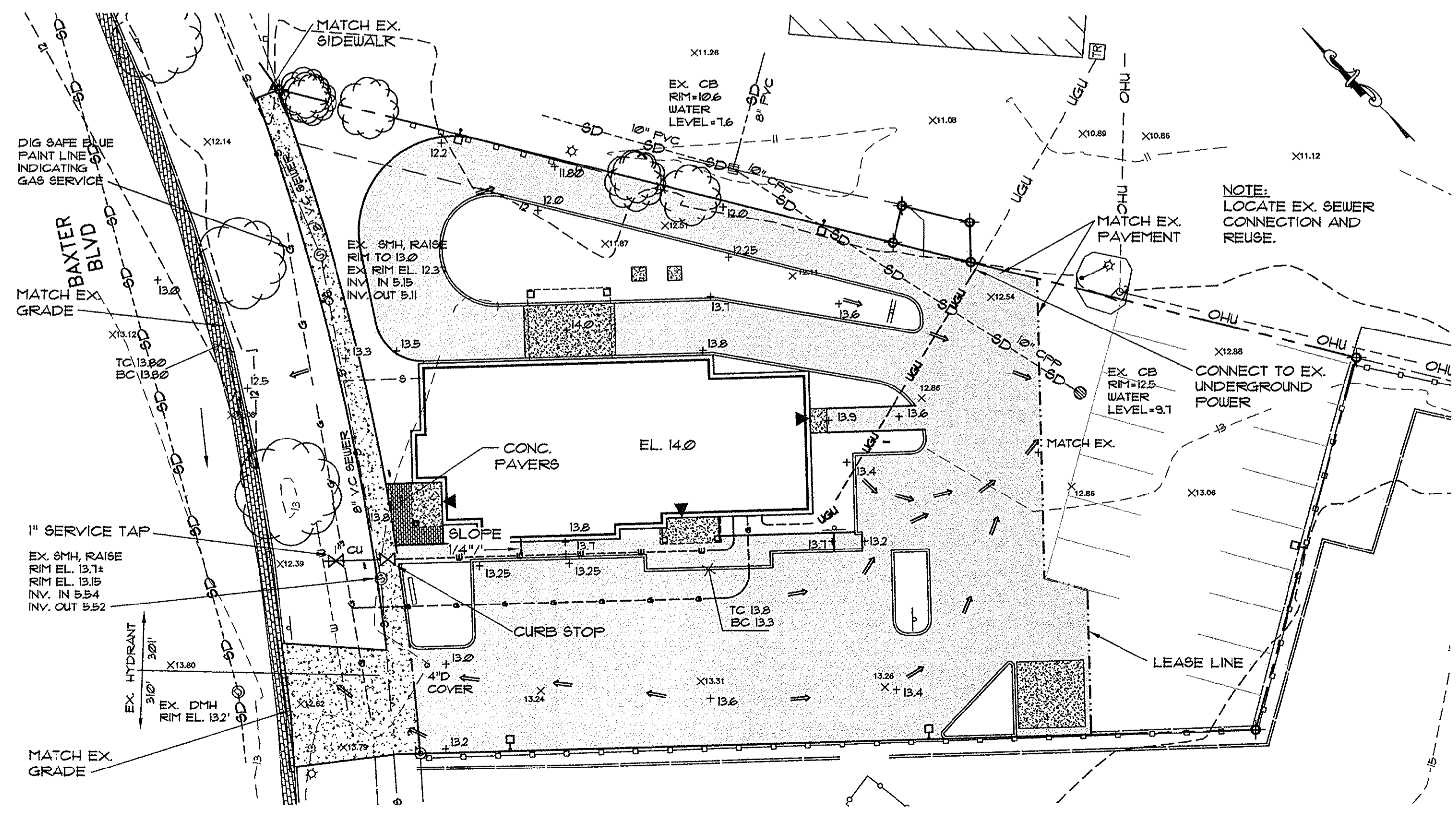
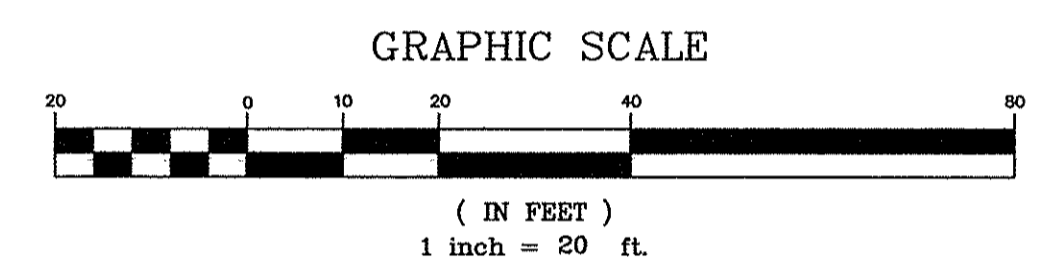
NOTES:

- 1) ELEVATIONS BASED ON GPS OBSERVATIONS AND ADJUSTED TO NGVD 29 WHICH COMPARE WITH ELEVATIONS ON PLAN REFERENCE #4.
 - 2) INVERT ELEVATIONS SHOWN IN PARENTHESES WERE TAKEN FROM PLAN REFERENCE #4.
 - 3) UNDER GROUND UTILITIES WERE NOT LOCATED, CALL DIG SAFE BEFORE ANY EXCAVATION.
- PLAN REFERENCES:**
- 1) RECONSTRUCTION OF HANNAFORD DRIVEWAY AT BAXTER BOULEVARD BY DELUCA-HOFFMAN ASSOCIATES, INC. DATED SEPT. 2011. SHEETS C12 & C20.
 - 2) PLAN OF SUPER SHOP'N SAVE PLAZA DATED OCT. 29, 1984 BY HI & EC JORDAN RECORDED IN CCRD FB 148, FG 14.
 - 3) AMENDED BACK COVE SUBDIVISION PLAN DATED MAY 15, 1984 BY HI & EC JORDAN RECORDED IN CCRD FB 142, FG 45.
 - 4) PORTLAND WATER DISTRICT POLLUTION ABATEMENT FACILITIES DATED AUGUST 1973 BY CAMP DRESSER & MCKEE INC. CONSULTING ENGINEERS.



EXISTING CONDITIONS & DEMOLITION PLAN

SCALE: 1"=20'

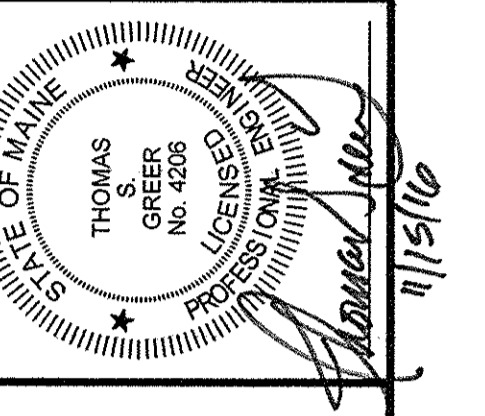


GRADING & UTILITIES PLAN

SEE LEGEND ON C1.1

SCALE: 1"=20'

PINKHAM & GREER
CIVIL ENGINEERS
28 HANNA AVE. PORTLAND, ME. 04103
TEL: 207.781.5242 FAX: 207.781.4245



REV.	DATE	DESCRIPTION
2	11/01/16	REV'D PER PWD COMMENTS & NEW LIGHTING PLAN
1	11/02/16	REV'D PER STAFF COMMENTS

CHABOT STREET, LLC (RECORD OWNER)
100 SILVER STREET
PORTLAND, ME 04101

SCALE: AS SHOWN
DATE: AUGUST 30, 2016
PROJECT: 15150

DRN BY: RJS
DESG BY: TSG
CHK BY: TCG

INFINITY CREDIT UNION (APPLICANT)
202 LARRABEE ROAD
WESTBROOK, ME 04092

BAXTER BOULEVARD
EXISTING CONDITIONS & DEMOLITION
GRADING & UTILITIES PLANS

C1.2