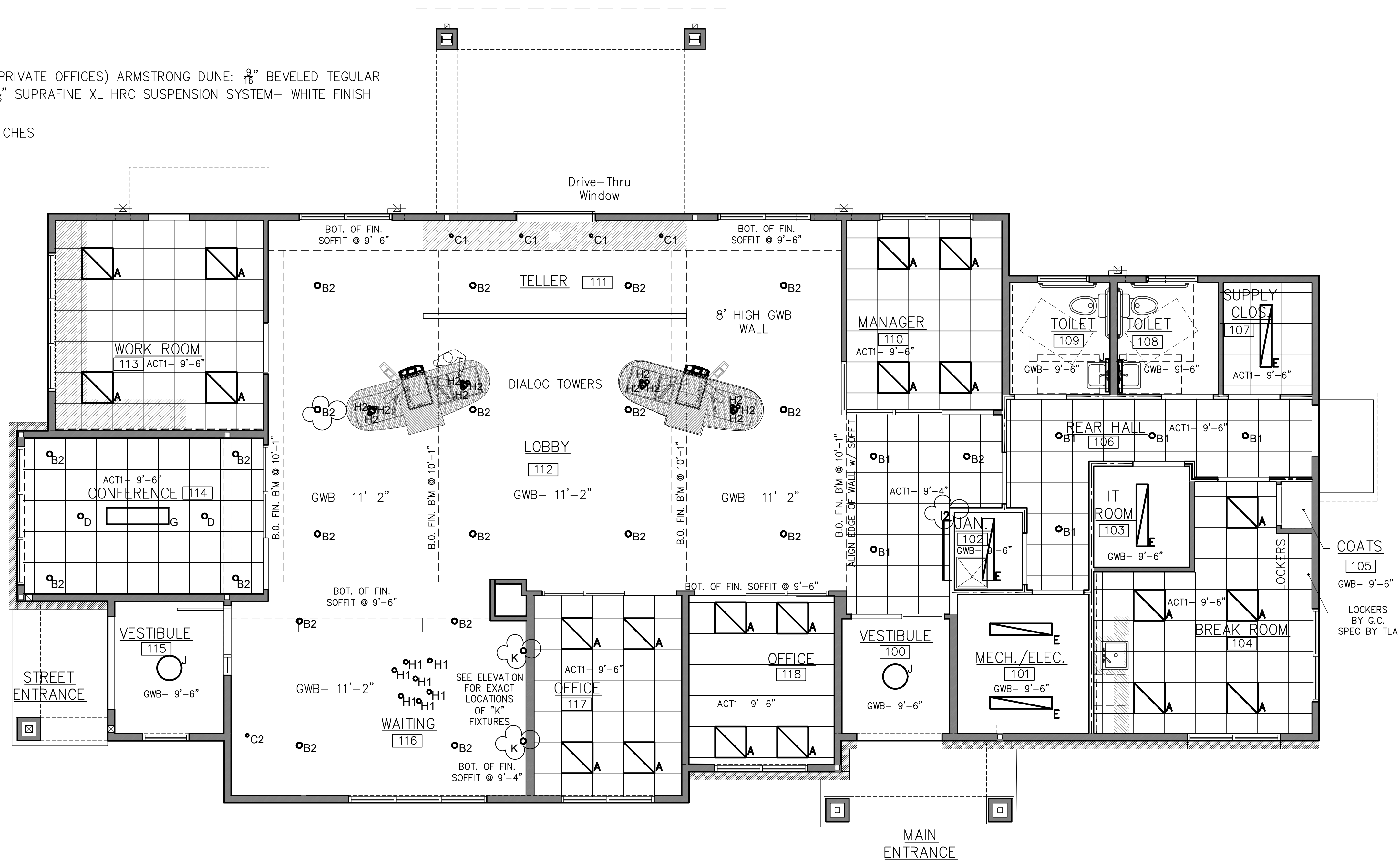


Rev. No.	Date	Description	Drawn by: JFD

FOR CONSTRUCTION
Infinity Credit Union
29 Baxter Boulevard Portland, ME
Reflected Ceiling Plan

ACT1-TYP CEILING TILE (INCLUDING PRIVATE OFFICES) ARMSTRONG DUNE: 3/8" BEVELED TEGULAR
- 1775 HRC 24"x24"x3/8" WITH A 3/16" SUPRAFINE XL HRC SUSPENSION SYSTEM- WHITE FINISH

ALL LIGHTING TO BE ON DIMMER SWITCHES



REFLECTED CEILING PLAN

Scale: 1/4" = 1'-0"