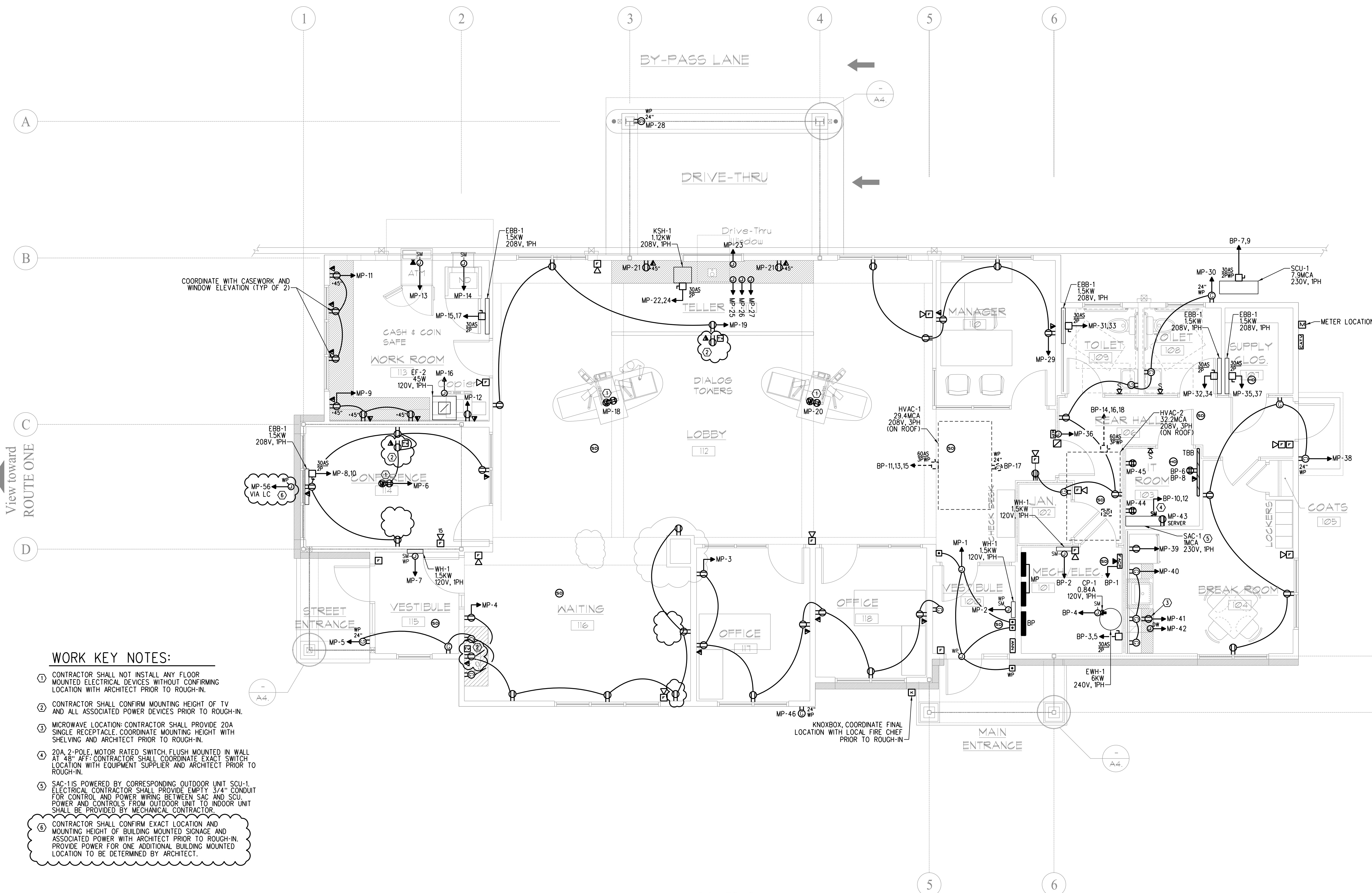


Rev. No.	Date	Description	Electrical Revisions	Drawn by: JFD
1	10-21-16			

Infinity Credit Union
29 Baxter Boulevard
Portland, ME
POWER PLAN

E3.1	sheet number
10-17-16	issued
-	project no.

10-17-16 FOR CONSTRUCTION



WORK KEY NOTES:

- ① CONTRACTOR SHALL NOT INSTALL ANY FLOOR MOUNTED ELECTRICAL DEVICES WITHOUT CONFIRMING LOCATION WITH ARCHITECT PRIOR TO ROUGH-IN.
- ② CONTRACTOR SHALL CONFIRM MOUNTING HEIGHT OF TV AND ALL ASSOCIATED POWER DEVICES PRIOR TO ROUGH-IN.
- ③ MICROWAVE LOCATION: CONTRACTOR SHALL PROVIDE 20A SINGLE RECEPTACLE. COORDINATE MOUNTING HEIGHT WITH SHELVEING AND ARCHITECT PRIOR TO ROUGH-IN.
- ④ 20A, 2-POLE, MOTOR RATED SWITCH, FLUSH MOUNTED IN WALL AT 48" AFF. CONTRACTOR SHALL COORDINATE EXACT SWITCH LOCATION WITH EQUIPMENT SUPPLIER AND ARCHITECT PRIOR TO ROUGH-IN.
- ⑤ SAC-1 IS POWERED BY CORRESPONDING OUTDOOR UNIT SCU-1. ELECTRICAL CONTRACTOR SHALL PROVIDE EMPTY 3/4" CONDUIT FOR CONTROL AND POWER WIRING BETWEEN SAC AND SCU. POWER AND CONTROLS FROM OUTDOOR UNIT TO INDOOR UNIT SHALL BE PROVIDED BY MECHANICAL CONTRACTOR.
- ⑥ CONTRACTOR SHALL CONFIRM EXACT LOCATION AND MOUNTING HEIGHT OF BUILDING MOUNTED SIGNAGE AND ASSOCIATED POWER WITH ARCHITECT PRIOR TO ROUGH-IN. PROVIDE POWER FOR ONE ADDITIONAL BUILDING MOUNTED LOCATION TO BE DETERMINED BY ARCHITECT.

POWER PLAN
SCALE: 1/4" = 1'-0"