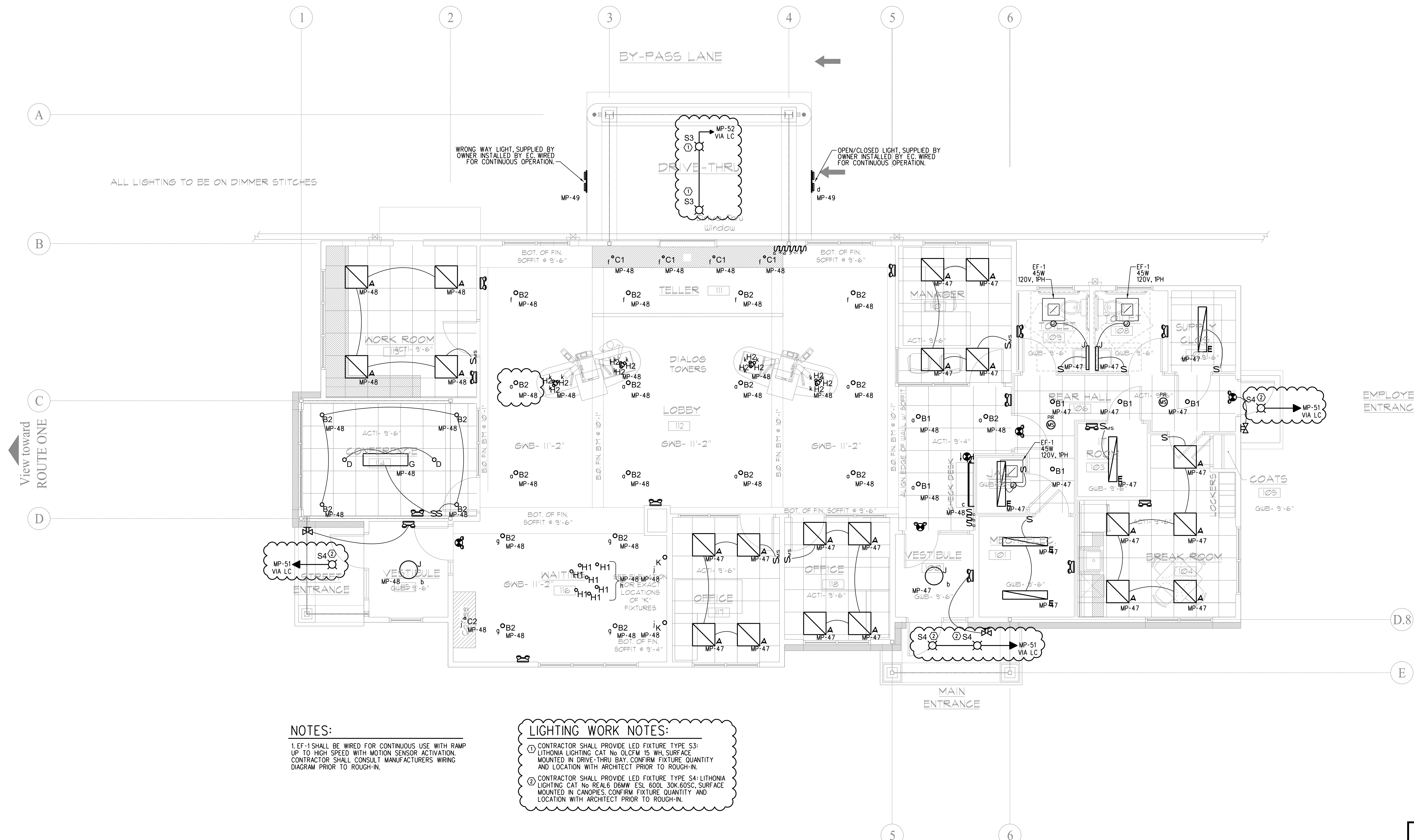


Rev. No.	Date	Description	Electrical Revisions	Drawn by: JFD
1	10-21-16			

Infinity Credit Union
Portland, ME
29 Baxter Boulevard

E2.1	sheet number	10-17-16	project no.	-
-------------	--------------	----------	-------------	---



NOTES:
1. EF-1 SHALL BE WIRED FOR CONTINUOUS USE WITH RAMP UP TO HIGH SPEED WITH MOTION SENSOR ACTIVATION. CONTRACTOR SHALL CONSULT MANUFACTURERS WIRING DIAGRAM PRIOR TO ROUGH-IN.

LIGHTING WORK NOTES:
① CONTRACTOR SHALL PROVIDE LED FIXTURE TYPE S3: LITHONIA LIGHTING CAT No QLCFM 15 WH, SURFACE MOUNTED IN DRIVE-THRU BAY. CONFIRM FIXTURE QUANTITY AND LOCATION WITH ARCHITECT PRIOR TO ROUGH-IN.
② CONTRACTOR SHALL PROVIDE LED FIXTURE TYPE S4: LITHONIA LIGHTING CAT No REAL6 60MW ESL 600L 30K.60SC, SURFACE MOUNTED IN CANOPIES. CONFIRM FIXTURE QUANTITY AND LOCATION WITH ARCHITECT PRIOR TO ROUGH-IN.

LIGHTING PLAN
SCALE: 1/4" = 1'-0"

10-17-16 FOR CONSTRUCTION