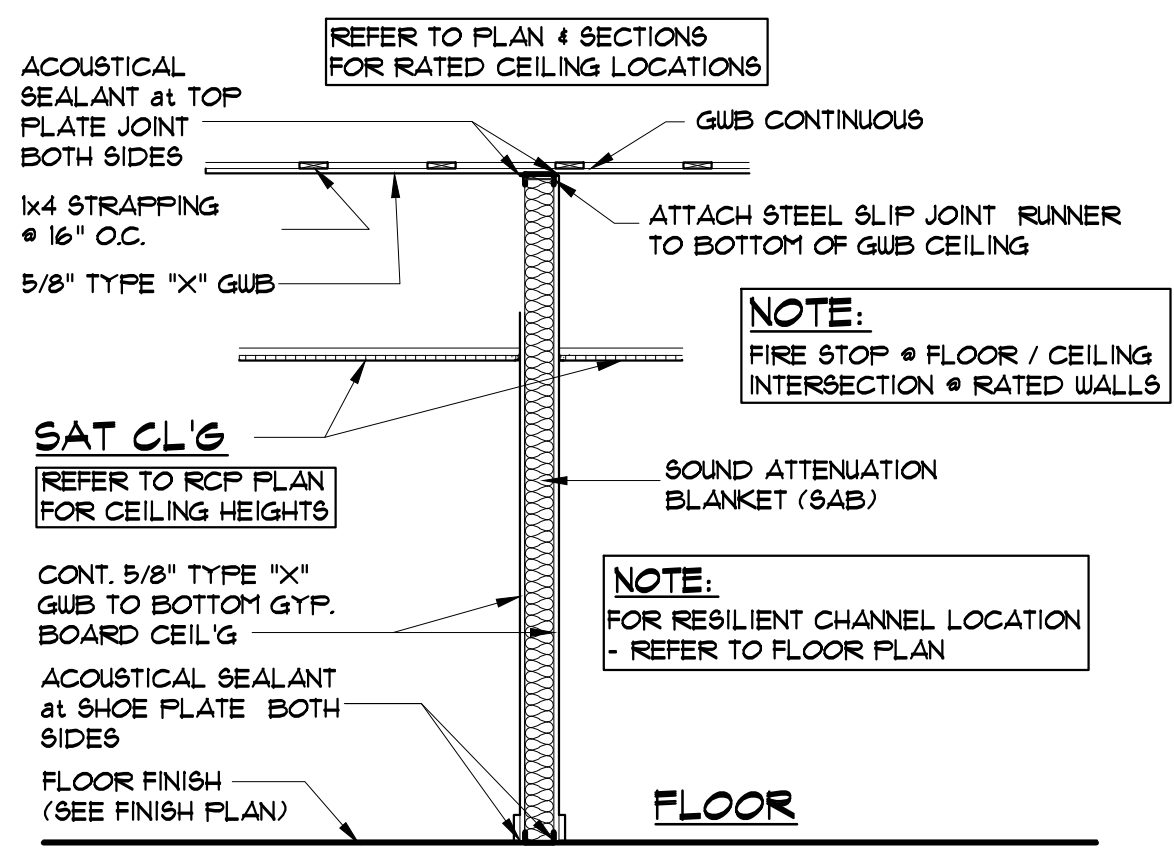
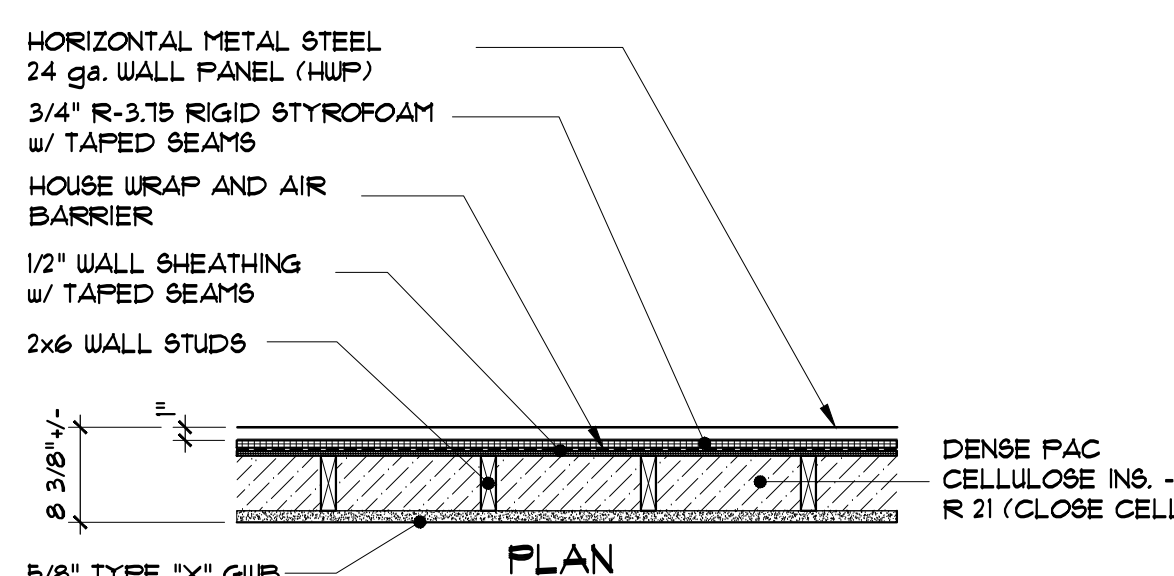


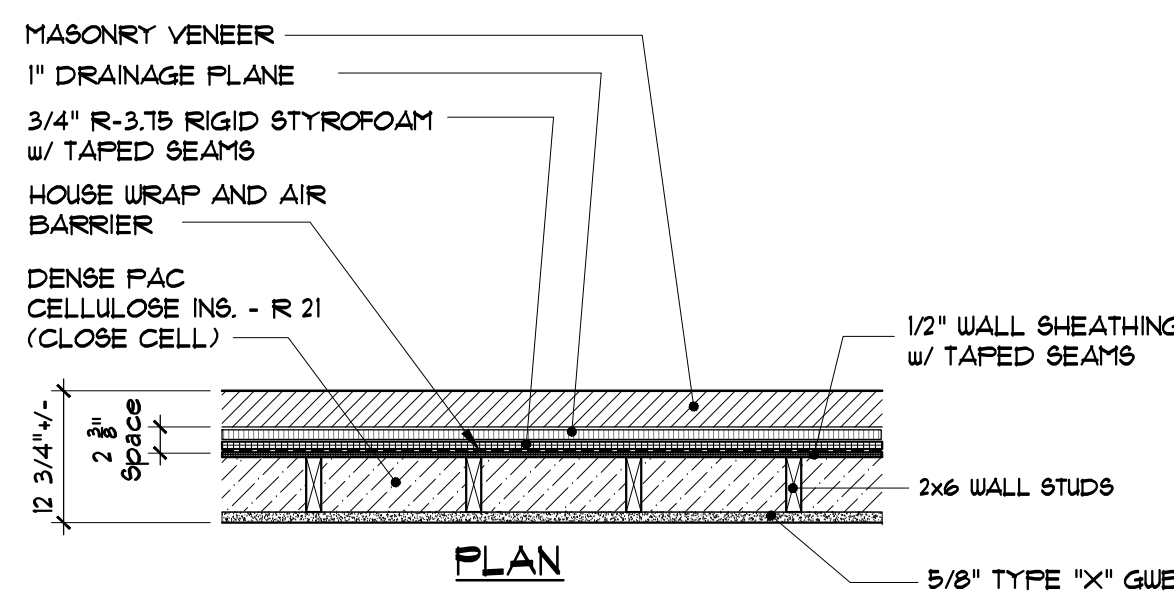
WALL TYPES



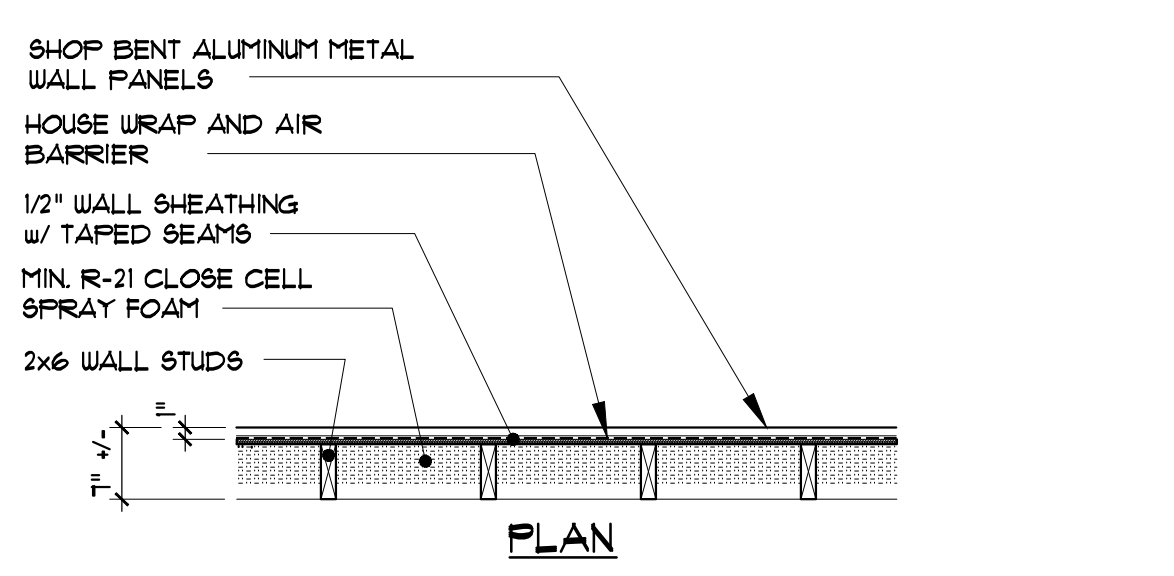
INTERIOR STUD WALL ELEV. - TYP.
NTS



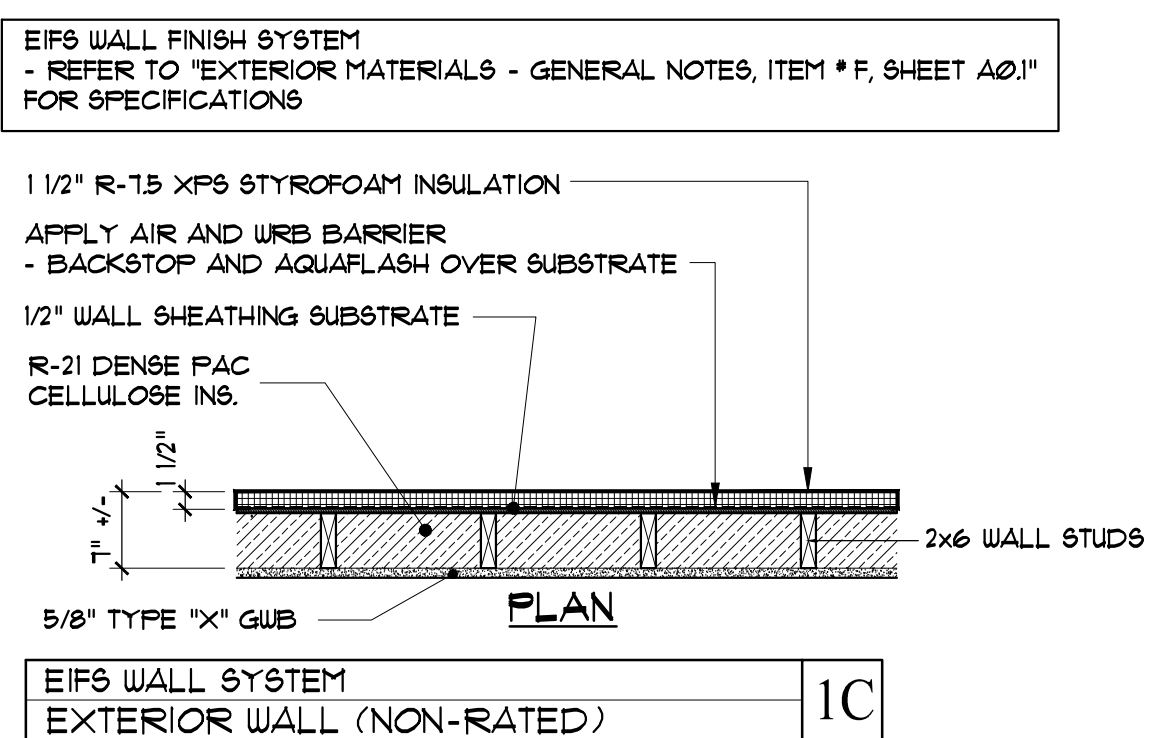
METAL HORIZONTAL WALL PANEL EXTERIOR WALL (NON-RATED) 1



MASONRY VENEER EXTERIOR WALL (NON-RATED) 1A



METAL WALL PANEL SIDING & TOWER EXTERIOR WALL (NON-RATED) 1B



EIFS WALL SYSTEM EXTERIOR WALL (NON-RATED) 1C

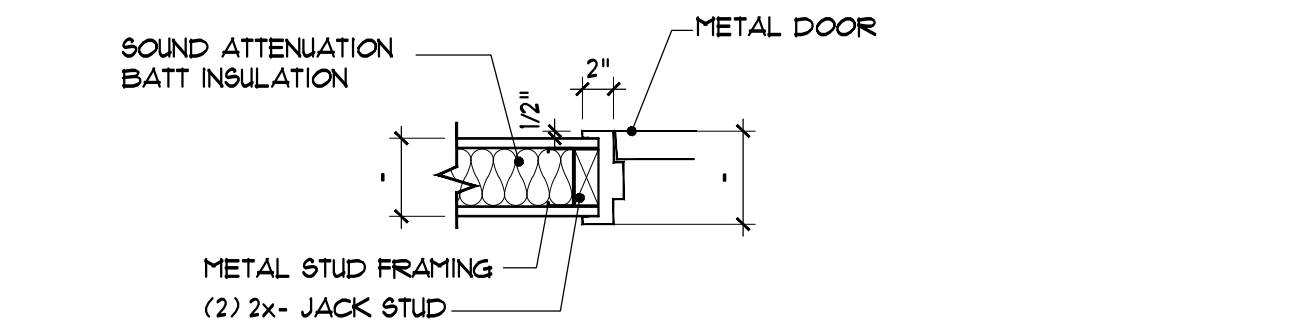
EXTERIOR WALL PARTITION TYPES

SCALE: NTS

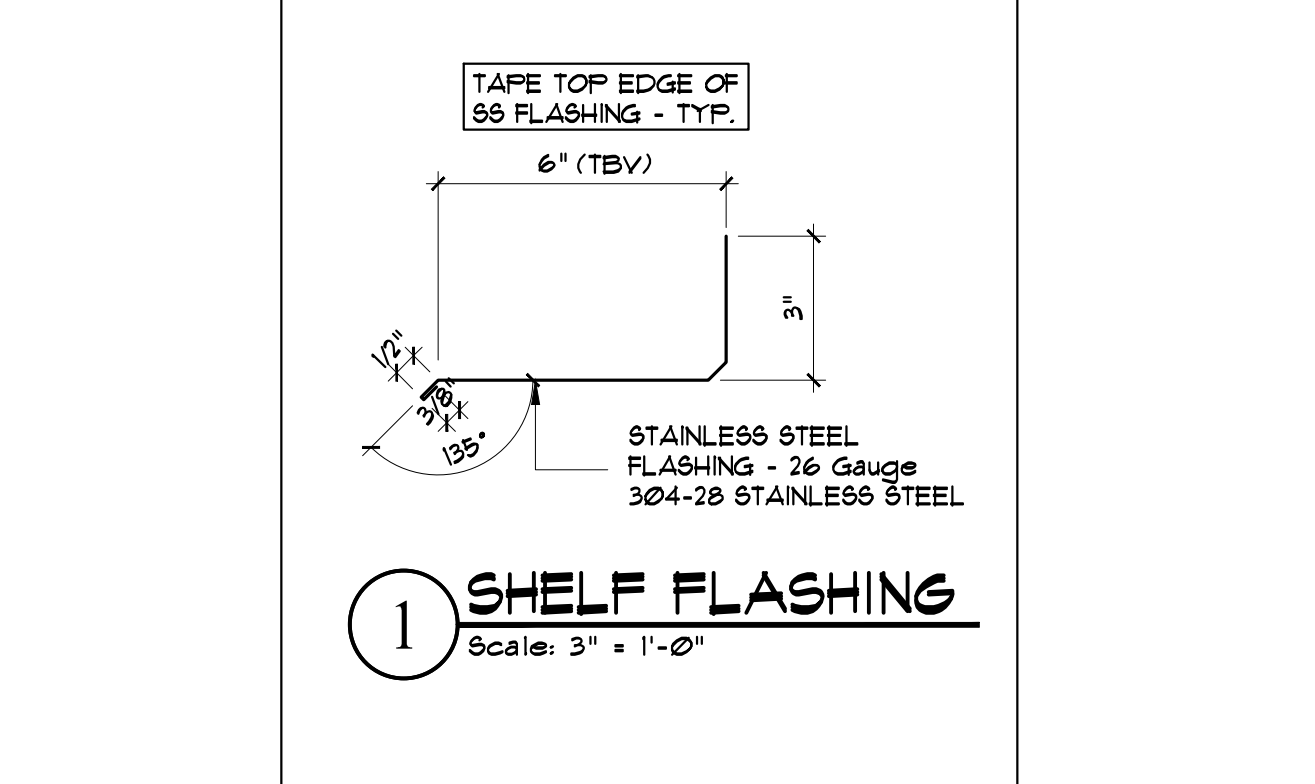
DESCRIPTION	QUANTITY	NOTES
3 5/8" STEEL STUDS W/ 3 1/2" S&B (NON-RATED)	2	NOTE: INSTALL FRENCH NOTCHED BRIDGING & SPACING BAR @ 1/3 SPAN @ INTERIOR NONSTRUCTURAL METAL STUDS - SIMILAR TO SPAZZER 9200 OR EQUAL.
3 5/8" STEEL STUDS W/ 3 1/2" S&B (60 MIN. RATED) UL ASSEMBLY U 465	2A	
3 5/8" STEEL STUDS W/ 3 1/2" S&B & RES. CHANNEL (60 MIN. RATED) UL ASSEMBLY U 465	2B	
3 5/8" STEEL STUDS W/ 3 1/2" S&B & RES. CHANNEL (NON-RATED)	2C	
(2) 3 5/8" STEEL STUDS W/ (2) 3 1/2" S&B & RESILIENT CHANNEL (BREAKROOM SIDE) & 5/8" TYPE 'X' GUB - BOTH SIDES (NON-RATED)	2D	NOTE: FIRE STOP @ FLOOR / CEILING INTERSECTION @ RATED WALLS
6" STEEL STUDS W/ 6" S&B (NON-RATED)	3	
6" STEEL STUDS W/ 6" S&B (60 MIN. RATED) 91M. UL ASSEMBLY U 465	3A	
6" STEEL STUDS W/ 6" S&B & 1/2" Res. Channel. (NON-RATED)	3B	
5 1/2" WOOD STUDS W/ 6" S&B (NON-RATED)	4	

INTERIOR WALL PARTITION TYPES

SCALE: 1/2" = 1'-0"



INT. MT'L D'R JAMB / HEAD DTL - TYP.
Scale: 1" = 1'-0"



1 SHELF FLASHING
Scale: 3" = 1'-0"

EXTERIOR MATERIALS:

GENERAL NOTES:

- INSTALL ALL EXTERIOR PRODUCTS PER MANUFACTURER'S WRITTEN SPECIFICATIONS. BEFORE INSTALLING ANY EXTERIOR PRODUCT, CONTACT MANUFACTURER'S FIELD REPRESENTATIVE FOR ON-SITE INSTALLATION PROCEDURES.
 - CONTRACTOR TO PROVIDE FULL SIZE MOCK-UP SIDING SAMPLES FOR OWNER AND ARCHITECT APPROVAL.
 - PROVIDE SHOP DRAWINGS AND SUBMITTALS FOR ALL EXTERIOR MATERIALS.
- A) FLAT ROOF - RUBBERGUARD EPDM Roof.**
MANUFACTURED BY FIRESTONE OR EQUAL.
1. FULLY ADHERED RUBBERGUARD, NON-REINFORCED LOW SLOPE FIRE RETARDANT (LSFR) EPDM SINGLE-PLY MEMBRANE.
2. THICKNESS: 2000
3. FULLY ADHERED EPDM RUBBER ROOF COMPLETE WITH EAVE METAL FLASHING, COUNTER FLASHING, BONDING ADHESIVE, SLOPED RIGID INSULATION RECOVERY BOARD, ETC. AND ALL THAT IS REQUIRED FOR A COMPLETE WATER-PROOF INSTALLATION.
4. WARRANTY: 20 YEAR MEMBRANE WARRANTY LENGTH.
- B) ROOF INSULATION - REFER TO THERMAL & ACOUSTICAL INSULATION SPECIFICATIONS - THIS SHEET.**
1. COVER BOARD INSULATION.
2. RIGID INSULATION.
3. TAPERED INSULATION.
4. CLOSE CELL SPRAY FOAM INSULATION.
- C) ROOF SHEATHING:**
MANUFACTURED BY ADVANTECH.
1. 5/8" T&G ADVANTECH - ROOF SHEATHING.
2. LOCATION - ENTIRE ROOF AREA.
- D) EXTERIOR METAL WALL PANEL SIDING (HUP)**
MANUFACTURED BY PAC-CLAD.
1. HORIZONTAL WALL PANEL (HUP)
2. MATERIAL: STEEL 24 gauge ROLL FORM.
3. MATCHING 'J' TRIM.
4. EXPOSURE: 1" T&G
5. FINISH: KYNAR 500.
6. FINISH WARRANTY: 20 NON-PRORATED.
7. ROUNDED INTERLOCK LEG PROVIDES FLUSH FIT.
8. COLOR: DARK BRONZE (TBV).
9. TESTING: ASTM E-330 TESTED.
- E) ARCHITECTURAL METAL SOFFIT, INCLUDING DRIVE-THRU AND FASCIA:**
(NOTE: SHOP BENT METAL AT PANEL ENTRANCES)
MANUFACTURED BY FIRESTONE.
1. UNCLAD UC-5000.
2. 032 ALUMINUM FLUSH PANEL-SMOOTH.
3. FINISH: KYNAR 500 / HYLAR 5000.
4. FACTORY FORMED INTERLOCKING METAL PANEL WITH CONCEALED FASTENING SYSTEM.
5. BUTYL SEALANT GASKET: NON-DRYING, NON-TOXIC, AND NON-SHRINKING FOR END LAP'S AND LAP JOINTS.
6. NON-VENTING PANEL AND VENTING PANEL (AT DRIVE THRU CEILING AND EXTERIOR ENTRANCES).
7. PANEL WIDTH: 8'.
8. PANEL DEPTH: 1".
9. COLOR: BONE WHITE METAL (TBV).
- F) METAL COPING - CAP FLASHING @ PARAPET WALL**
(NOTE: FIELD OR SHOP FABRICATION)
1. MATERIAL: PREFINISHED STEEL - 24 gauge ROLL FORM.
2. CONCEALED ANCHORS - NO EXPOSED FASTENERS WILL BE ACCEPTABLE.
3. FABRICATE CAP FLASHING TO MINIMIZE OIL CANNING.
4. PROVIDE SHOP DRAWINGS FOR REVIEW.
5. COLOR: BONE WHITE METAL (TBV).
- G) EXTERIOR EIFS WALL FINISH SYSTEM (WALL CONSTRUCTION):**
MANUFACTURED BY DRYVIT.
1. OUTSULATION PLUS MD SYSTEM.
2. WALL PENETRATIONS: AQUAFLASH FLASHING SYSTEM.
3. SEAMLESS AIR AND WATER RESISTIVE BARRIER - BACKSTOP NT AND AQUAFLASH.
4. ALL SUBSTRATE JOINTS MUST BE TREATED WITH DRYVIT GRID TAPE AND BACKSTOP NT.
5. SUBSTRATE: 1/2" APA EXTERIOR OR EXPOSURE 1 RATED PLYWOOD, GRADE C-D OR BETTER.
6. INSTALLED WITH THE C FACE OUT - SEE STRUCTURAL DRAWINGS.
7. VERTICAL ADHESIVE / DRAINAGE MEDIUM.
8. DRAINAGE TRACK AT BASE.
9. 1 1/2" XPS DOW STYROFOAM INSULATION - R 15.
10. MECHANICAL FASTENER WITH WASHER.
11. BASE COAT.
12. REINFORCING MESH.
13. 3/4"x3/4" 'V' JOINT - CONTROL JOINTS PER MANUFACTURER'S RECOMMENDATIONS.
14. ACRYLIC FINISH COAT: "SANDBLAST" FINISH.
15. COLOR: MATCH MAIN OFFICE.
- H) BRICK SIDING:**
MANUFACTURED BY MORIN BRICK.
1. OLD PORT BLEND W/ NARROW FLASH RANGE.
2. PER ASTM SPECIFICATION C-91 FOR TYPE "N" MASONRY CEMENT, COLOR: NATURAL
3. REFER TO MASONRY WALL NOTES - SEE THIS SHEET FOR ADDITIONAL SPECIFICATIONS.
- I) RIGID WALL INSULATION (CONTINUOUS) BEHIND METAL WALL PANEL SIDING AND BRICK VENEER**
MANUFACTURED BY THE DOW CHEMICAL CO.
1. EXTRUDED POLYSTYRENE FOAM RIGID BOARD. (XPS)
2. 3/4" TONGUE & GROOVE STYROFOAM INSULATION - R-3.15.
3. 2x6 BOARD SIZE.
4. TAPE ALL SEAMS. USE TAPE APPROVED BY INSULATION MANUFACTURER.
5. SECURE INSULATION TO WALL SHEATHING.
- J) DUPONT'S 'TYVEK' HOUSE WRAP AIR BARRIER WITH TAPED JOINTS OVER 1/2" SUBSTRATE SHEATHING.**
NO 'TYVEK' BEHIND EIFS WALL SYSTEM - SEE NOTE F) 3 THIS SHEET.
- K) DRAINAGE PLANE: (Behind Brick Veneer)**
MANUFACTURED BY CAVECLEAR.
1. REFER TO MASONRY WALL NOTES - SEE NOTE: -, THIS SHEET.
FOR ADDITIONAL SPECIFICATIONS.
- L) CONCRETE FILLED BOLLARD COVERS: AS MANUFACTURED BY IDEAL SHIELD**
1. 1/4" NOMINAL THICK LOW DENSITY POLYETHYLENE.
2. COLOR (TBD)

THERMAL & ACOUSTICAL INSULATION:

- A) EXTERIOR RIGID ROOF INSULATION (R 23.6)**
MANUFACTURED BY FIRESTONE
1. FIRESTONE ISO 95+ G.I. INSULATION
a. HCFC-FREE AND ZERO OZONE DEPLETION POTENTIAL (ZERO-ODP)
b. 4.0" THICKNESS, LTRR VALUE / Inch = R 5.5, LTRR VALUE = R 23.6
2. INSTALL TAPERED INSULATION - REFER TO ROOF PLAN FOR LOCATION.
3. INSTALL 1/2" FIBERTOP COVER BOARD.
- B) TRUSS INSULATION (SPRAY FOAM): (MIN. R 20 UNO)**
MANUFACTURED BY SPRAYTITE OR EQUAL.
1. CLOSED-CELL FOAM (MIN. R-VALUE 6.6 PER INCH).
2. FORMALDEHYDE AND LEAD FREE W/ NO (VOC'S) VOLATILE ORGANIC COMPOUNDS AND ZERO ZONE DEPLETING BLOWING AGENT TECHNOLOGY.
3. APPLY SPRAY FOAM DIRECT TO THE UNDERSIDE OF THE ROOF SHEATHING. NO VENTING REQUIRED. VERIFY W/ MANUFACTURER (HOT ROOF DESIGN).
4. GABLE WALLS (AS PART OF THE SEMI-CONDITIONED TRUSS SPACE) APPLY SPRAY FOAM DIRECT TO WALL SHEATHING, MIN. R-21
- C) EXTERIOR WALL INSULATION (DENSE PAC): (R 21)**
MANUFACTURED BY NATIONAL FIBER OR EQUAL.
1. NU-WOOL PREMIUM CELLULOSE INSULATION.
2. PREMIUM CELLULOSE INSULATION (MIN. R-VALUE 3.5 PER INCH).
3. SPRAYED-IN-PLACE TO A DENSITY OF 30 TO 35 lbs./CF. (CLOSE CELL)
4. MIN. 80% POST-CONSUMER RECYCLED CONTENT.
5. INSULBEEB NETTING - SFUN BOND POLYPROPYLENE.
6. VERIFY NO VAPOR RETARDER IS RECOMMENDED BY INSULATION MANUFACTURER IN AIR CONDITIONED BUILDINGS.
- D) PARTITION WALL BACKERS AND CORNER POSTS - SPRAY FOAM**
MANUFACTURED BY SPRAYTITE OR EQUAL.
1. SPRAY PARTITION WALL BACKERS AND CORNER POSTS WITH CLOSED-CELL FOAM BEFORE COVERING UP WALL.
- E) SOUND ATTENUATION BATT (S&B) INSULATION:**
MANUFACTURED BY OWENS CORNING "QUIET ZONE" OR EQUAL.
1. INTERIOR METAL STUD WALL PARTITION INSTALLATION - 3 1/2" or 5 1/2" or 6" BATT INSULATION.
2. SEAL TOP AND BOTTOM OF STUD WALL WITH ACOUSTICAL SOUND SEALANT AS MANUFACTURED BY HENKEL CORP. "OBI SC-115" OR EQUAL.
3. ALL CEILING AND RATED WALL PENETRATIONS SHALL BE FIRE CAULKED.
- F) WINDOW AND DOOR AIR SEAL FOAM SEALANT:**
MANUFACTURED BY THE DOW CHEMICAL COMPANY.
1. GREAT STUFF PRO WINDOW & DOOR INSULATING FOAM SEALANT OR EQUAL.
2. ONE-COMPONENT, MINIMAL EXPANDING, LOW PRESSURE, FLEXIBLE POLYURETHANE FOAM.

MASONRY WALL NOTES:

- NOTE: ALL MASONRY CONSTRUCTION SHALL BE PER THE BRICK INDUSTRY ASSOCIATION TECHNICAL NOTES ON BRICK CONSTRUCTION LATEST EDITION.
- DRAINAGE PLANE: INSTALL DRAINAGE PLANE IN AIR SPACE.
- BRICK VENEER WALL FLASHING
A. VENEER WALL FLASHING: MANUFACTURED BY GRACE; PERMA-A-BARRIER SELF ADHESING WALL FLASHING MIN. 12" WIDE (UNO). PLACE FLASHING AT ALL POINTS WHERE THE AIR SPACE IS INTERRUPTED. INCLUDE BUT NOT LIMITED TO: BELOW ALL WINDOW AND DOOR OPENINGS AND OVER STEEL OR CONCRETE LINTELS. SECURE FLASHING DIRECT TO WALL SHEATHING, BEHIND RIGID WALL INSULATION.
B. END DRAIN: TURN UP FLASHING ENDS INTO HEAD JOINT OPENINGS A MINIMUM OF 1 1/2" TO FORM AN END DRAIN.
C. STAINLESS STEEL (SS) METAL SHELF FLASHING: INSTALL CONTINUOUS ABOVE FINISH GRADE. (6" wide x 3" h. x 3/8" drip - SEE DETAIL THIS SHEET).
D. TAPE 6" WIDE: INSTALL CONTINUOUS OVER TOP EDGE OF STAINLESS STEEL METAL WALL FLASHING - OVERLAP 2" MINIMUM.
E. RIGID INSULATION TAPE: PER INSULATION MANUFACTURER'S RECOMMENDATION. TAPE ALL SEAMS.
F. VERTICAL HEAD WEEPS - INSTALL ABOVE ALL FLASHING (UNO) - MAX. HOR. SPACING 24" O.C.
G. PLASTIC VENT TUBES: AT ROLLOFF COURSE - INSTALL 1/4" O.D. x 4" Lg. VENT TUBES @ 16" O.C. ABOVE PERMA-FLASHING.
H. BELOW GRADE - BASE SHELF FLASHING @ BRICK SHELF: INSTALL PERMA-BARRIER - 12" wide SELF-ADHERED BILL FLASHING.
I. MASON CONTRACTOR TO REVIEW EXTERIOR GRADING AGAINST THE BUILDING TO DETERMINE FINAL LOCATION OF STAINLESS STEEL BASE FLASHING. INSTALL SS FLASHING AT THE BRICK SHELF (UNO). DO NOT COVER VERTICAL HEAD WEEPS OR BASE FLASHING WITH FINAL GRADE.
- ADJUSTABLE MASONRY ANCHOR: MANUFACTURED BY WIRE-BOND, (OR EQUAL) HOT DIP GALVANIZED / ZINC COATING.
A. TYPE 3 X 1/8" DIA: 1 1/4" wide x 6" long CHANNEL SLOT, w/ PINTEL # 11020 TRIANGLE: 1/4" diameter - SIZE (TBD).
B. TYPE 3 X 1/8" DIA: 1 1/4" wide x 6" long CHANNEL SLOT, SCREW ON VENEER ANCHOR.
C. FINISH: HOT DIP GALVANIZED.
D. Max 16" VERTICAL AND 32" HORIZONTAL (MAX. 35 #F.)
- MORTAR CELL WENTS: (VERT. HEAD WEEPS - SEE NOTE 3F) MANUFACTURED BY ADVANCED MAZE CELL WENTS OR EQUAL.
A. POLYPROPYLENE - 3/8" x 2 1/2" x 3 3/8"
- DRAINAGE PLANE:
A. CAVECLEAR MASONRY MAT: 1" THICK (REFER TO DRAWINGS FOR LOCATION).
I. INSTALL FULL HEIGHT WITH-IN AIR SPACE AND DRAINAGE MANAGEMENT 16" x 36" SHEET.
B. INSTALL PER MANUFACTURER'S INSTRUCTIONS.
- VERTICAL EXPANSION JOINT SEALANTS: 3/8" THICK, JOINT SEALANT W/ CLOSE CELL CIRCULAR FOAM BACKER ROD AND SEALANT, COMPLY WITH ASTM C 920, GRADE NS, USE M, CLASS 50 MIN. EXTENSIBILITY, COLOR: (TBD)
- VERTICAL EXPANSION JOINT SPACING NOT TO EXCEED 20'-0" WITHOUT OPENINGS. REFER TO THE BRICK INDUSTRY - TECHNICAL NOTES ON BRICK CONSTRUCTION - 18 A FOR ADDITIONAL REQUIREMENTS.
- BRICK SHELF ANGLES: (SEE STRUCTURAL DRAWINGS FOR LOCATION) FURNISH AND INSTALL GALVANIZED ANGLES (PAINTED) MIN. 4" BEARING.

PIDONATO
COMMERCIAL - RESIDENTIAL

Joe DiDonato

400 US Route One, Suite A South
Falmouth, ME 04105
Tel: (207) 842-6260
Fax: (207) 842-6271

tlg inc.
creative ■ design ■ solutions

Rev. No.	Date	Description	Drawn by: JFD

Infinity Credit Union
29 Baxter Boulevard
Portland, ME
SPECIFICATION SHEET

A0.2
sheet number
issued: -
project no. 1605