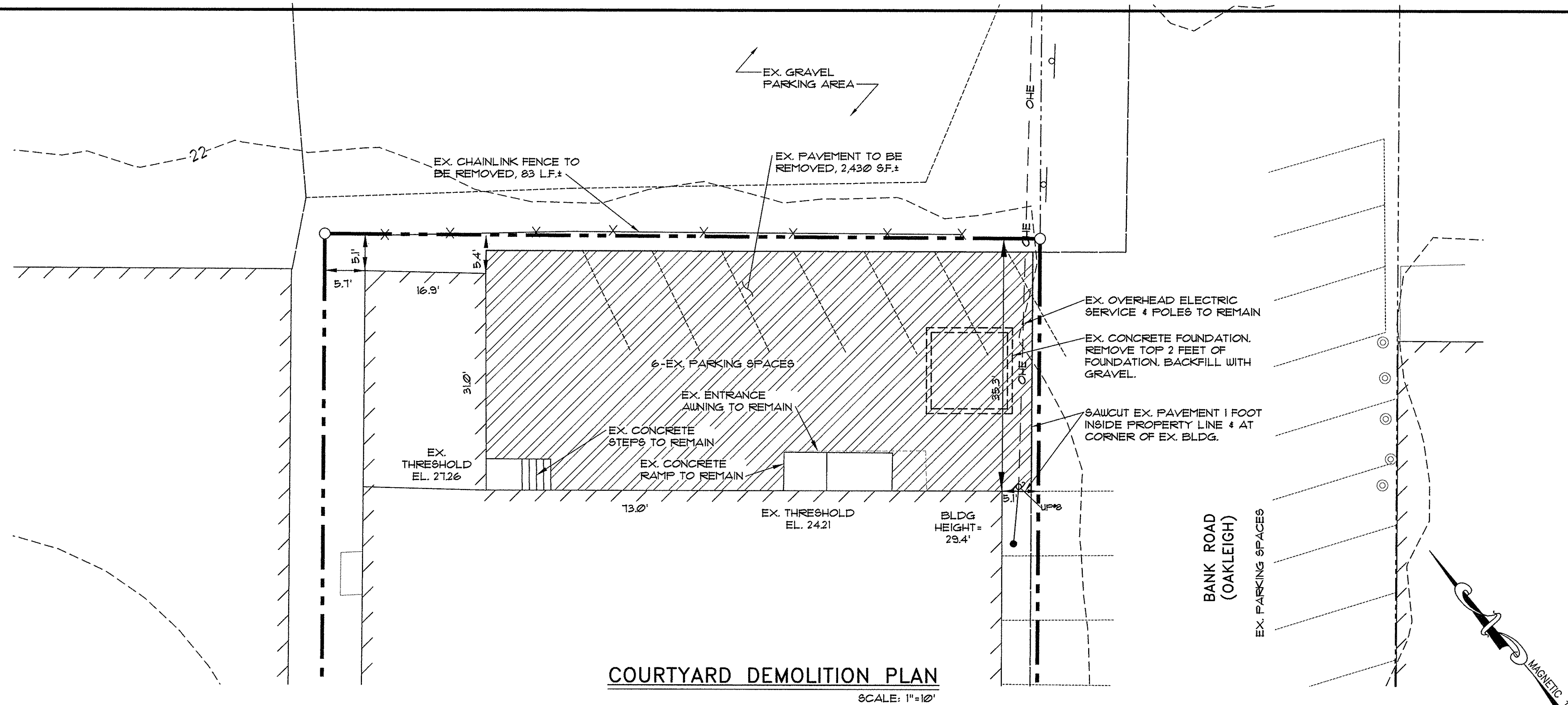
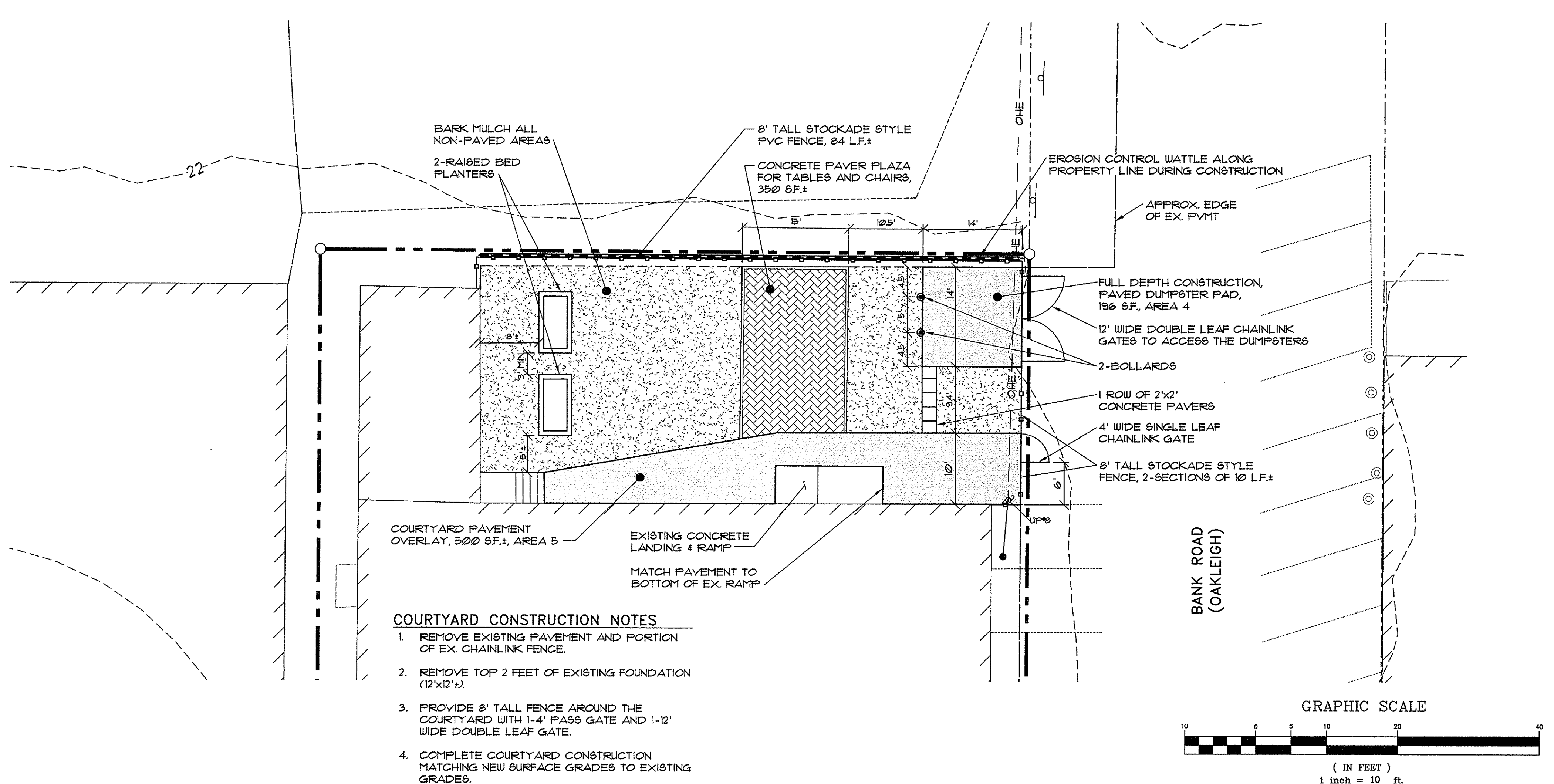


LEGEND

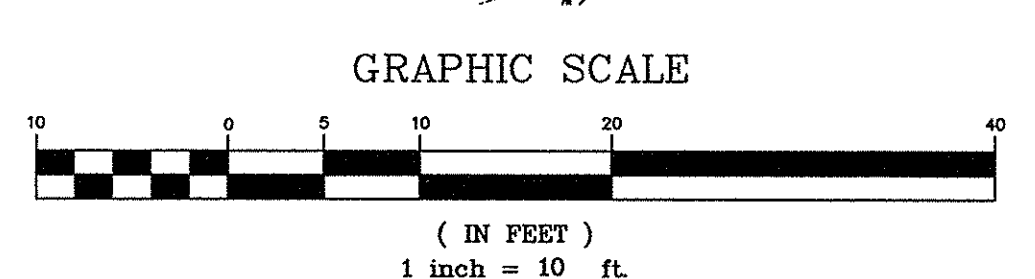
EXISTING		PROPOSED	
	PROPERTY LINE		STOCKADE FENCE
	ABUTTERS PROPERTY		BOLLARD
	EDGE OF PAVEMENT		BITUMINOUS PAVEMENT
	OHE		BARK MULCH
	OVERHEAD ELECTRICAL		CONCRETE PAVERS
	UTILITY POLE		EROSION CONTROL WATTLE
	UTILITY POLE W/ GUY WIRE		
	SIGN		
	CHAINLINK FENCE		
	LIGHT POLE		
	PROPERTY CORNER		
	BOLLARD		
	CONTOUR		
	BUILDING		
	EDGE OF GRAVEL		
	PAVEMENT TO BE REMOVED		



COURTYARD DEMOLITION PLAN
SCALE: 1"=10'

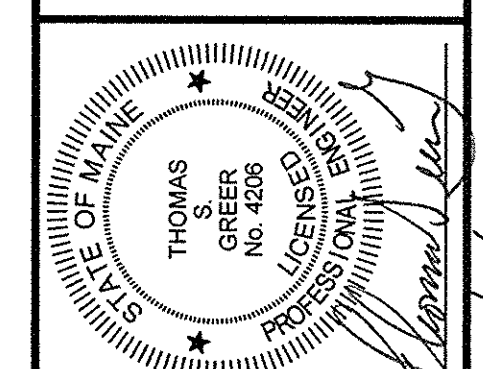


- COURTYARD CONSTRUCTION NOTES**
1. REMOVE EXISTING PAVEMENT AND PORTION OF EX. CHAINLINK FENCE.
 2. REMOVE TOP 2 FEET OF EXISTING FOUNDATION (12'x12').
 3. PROVIDE 8' TALL FENCE AROUND THE COURTYARD WITH 1-4' PASS GATE AND 1-12' WIDE DOUBLE LEAF GATE.
 4. COMPLETE COURTYARD CONSTRUCTION MATCHING NEW SURFACE GRADES TO EXISTING GRADES.



COURTYARD SITE PLAN
SCALE: 1"=10'

PINKHAM & GREER CIVIL ENGINEERS
28 WINDHAM AVE. PORTLAND, ME 04103
TEL: 207.781.5242 FAX: 207.781.4245



REV.	DATE	DESCRIPTION
2	9/20/17	REV'D PER STAFF REVIEW
1	7/31/17	REV'D PER STAFF REVIEW

LIBERTY BAY RECOVERY CENTER
835 FOREST AVENUE
PORTLAND, ME 04103

SCALE: AS SHOWN
DATE: APRIL 10, 2017
PROJECT: 17123

DRN BY: RJS
DESIGN BY: TSG
CHK BY: TSG

SITE IMPROVEMENTS
343 FOREST AVENUE
PORTLAND, MAINE

COURTYARD PLAN

C2.2
MAP/LOT MAP 112 / BLOCK D / LOT 4