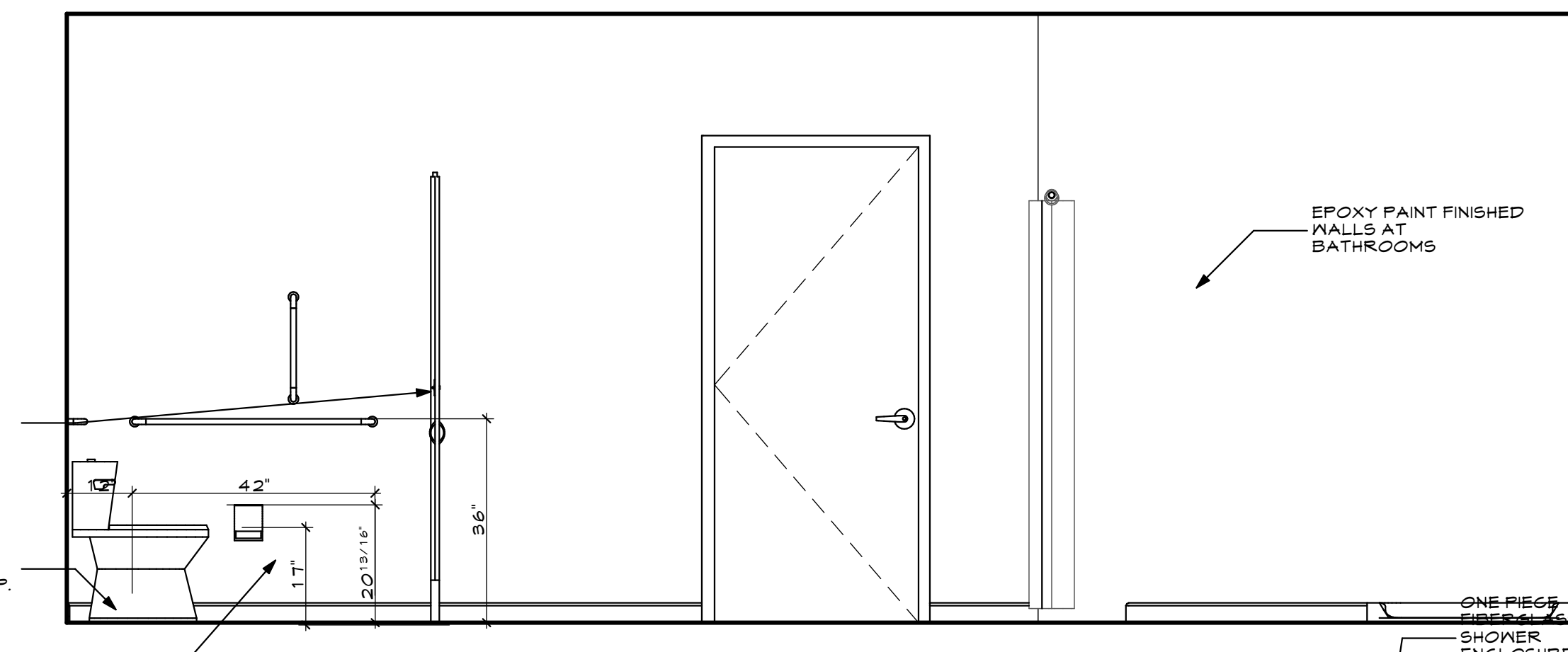
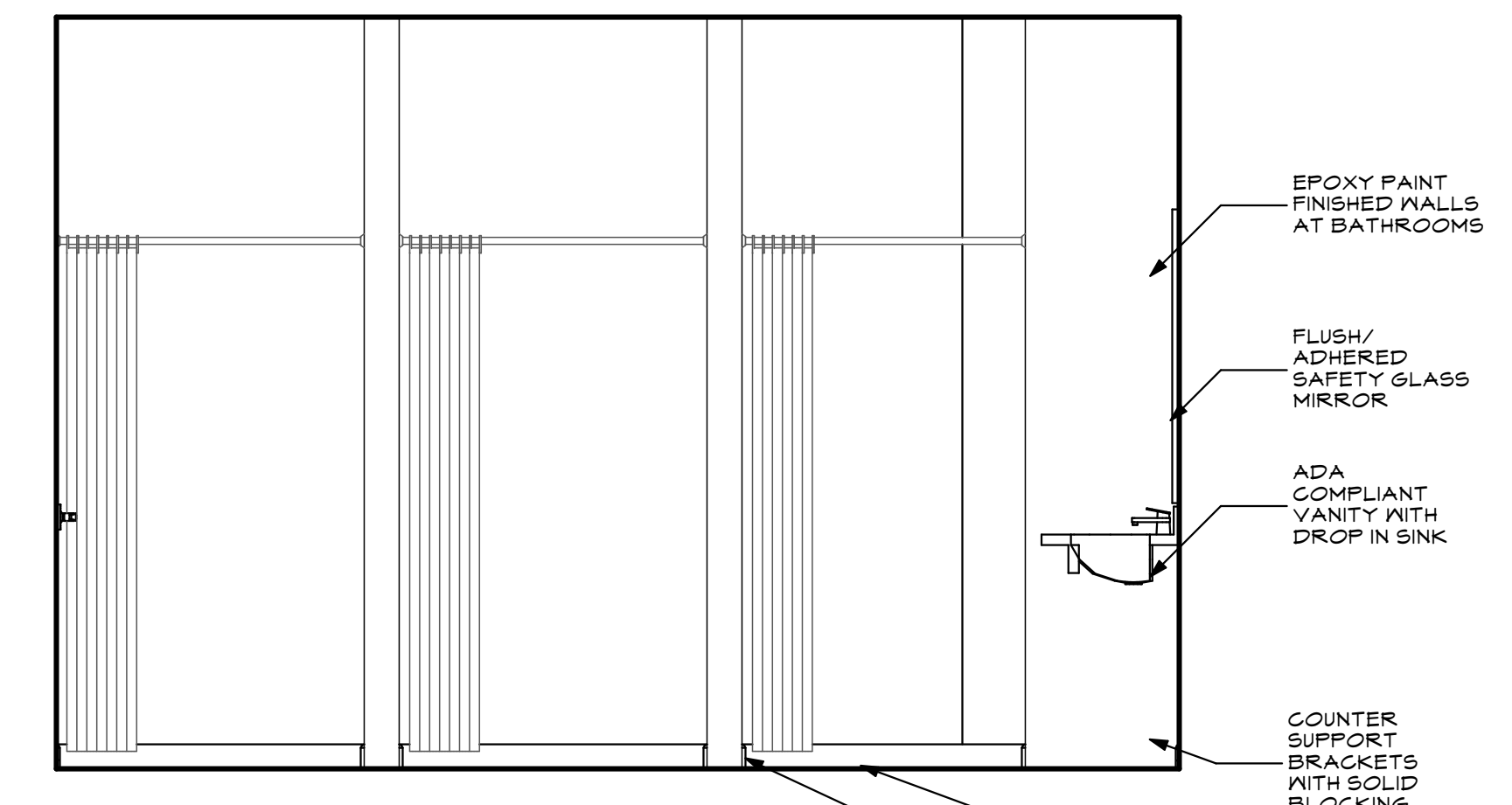


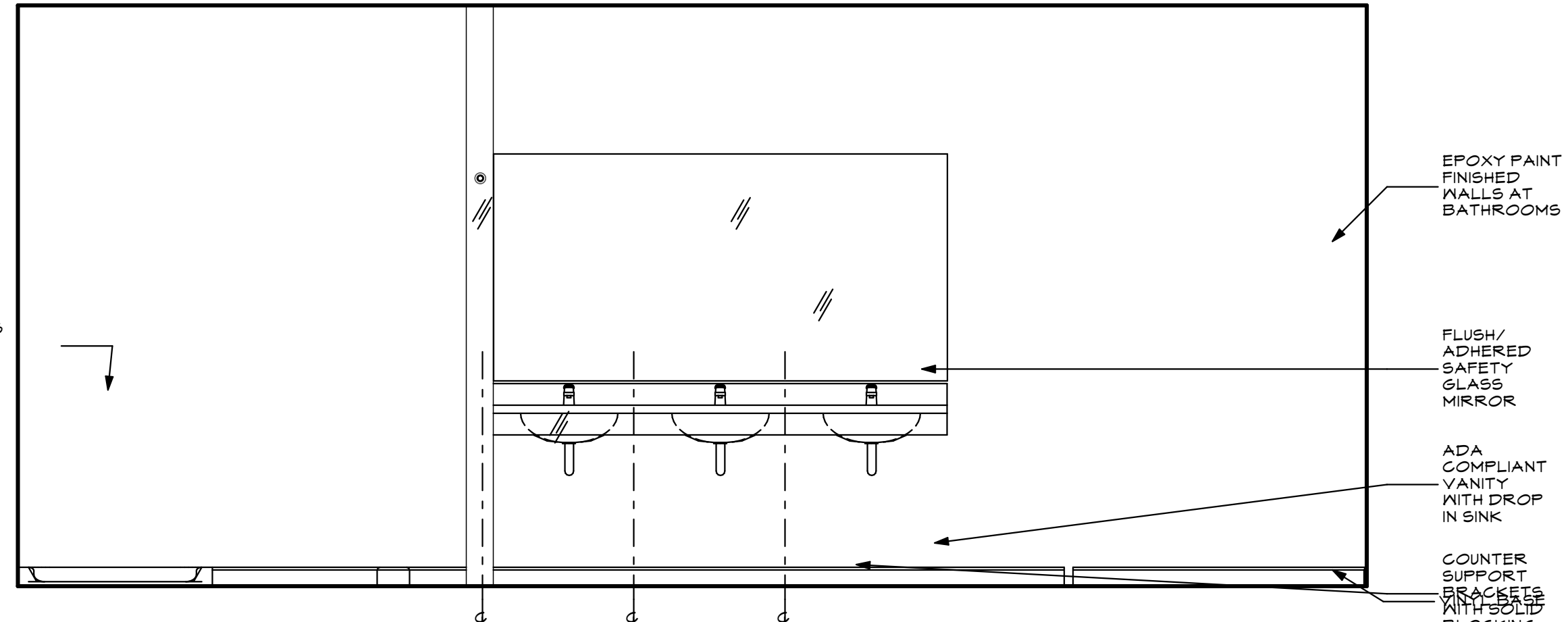
1 INT. ELEV. NEW WOMENS BATH
 A5.2 SCALE: 1/2" = 1'-0"



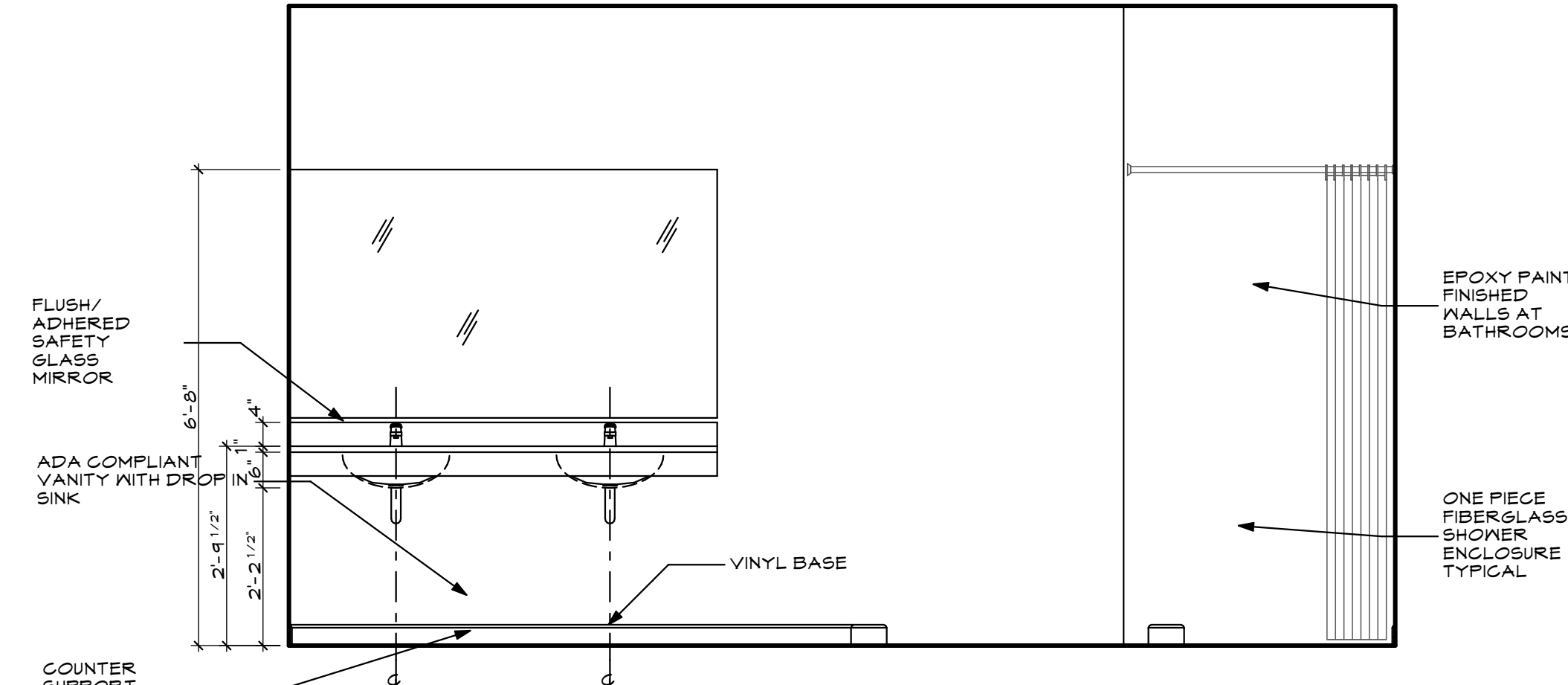
2 INT. ELEV. NEW WOMENS BATH
 A5.2 SCALE: 1/2" = 1'-0"



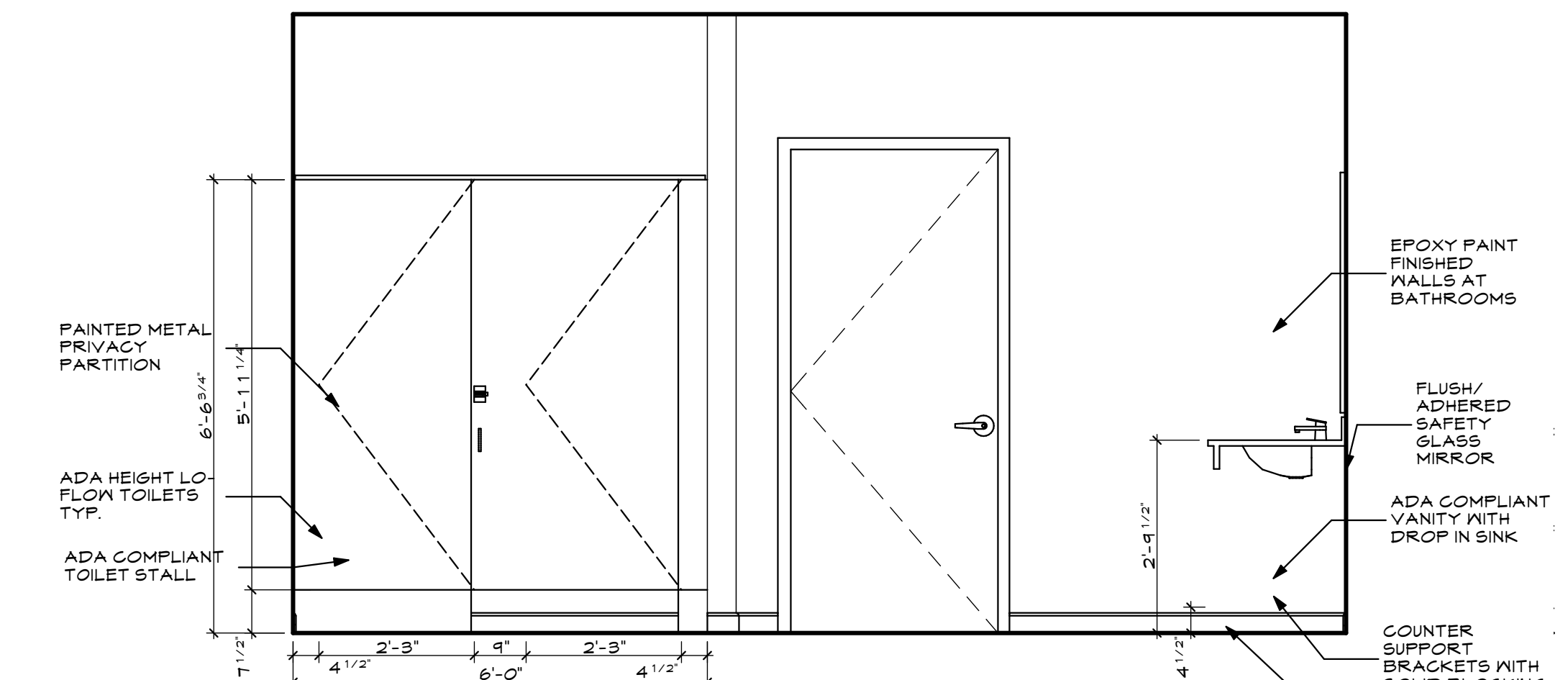
3 INT. ELEV. NEW WOMENS BATH
 A5.2 SCALE: 1/2" = 1'-0"



4 INT. ELEV. NEW WOMENS BATH
 A5.2 SCALE: 1/2" = 1'-0"



5 INT. ELEV. NEW MENS BATH
 A5.2 SCALE: 1/2" = 1'-0"



8 INT. ELEV. NEW MENS BATH
 A5.2 SCALE: 1/2" = 1'-0"

LIBERTY BAY
 349 FOREST AVENUE PORTLAND, MAINE 04101

WHIPPLE CALLENDER ARCHITECTS

136 PLEASANT AVE.
 PORTLAND, ME 04103
 P 207.775.2696
 F 207.775.3631
 www.whipplecallender.com

DATE	DESCRIPTION
6/2/17	SFMO APPLICATION SET
	CHECKED BY: JAD
	DRAWN BY: CLBC
	JOB: LIB 2017
	SHEET TITLE: INT. ELEV.

A5.2

PROGRESS SET - NOT FOR CONSTRUCTION

THIS DRAWING IS AN INSTRUMENT OF SERVICE AND SHALL REMAIN THE PROPERTY OF WHIPPLE CALLENDER ARCHITECTS. IT SHALL NOT BE USED FOR ANY OTHER PURPOSE THAT FOR WHICH IT IS SPECIFICALLY FURNISHED.