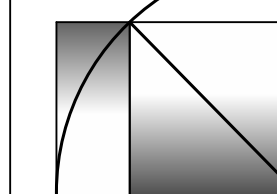


WHIPPLE
CALLENDER
ARCHITECTS

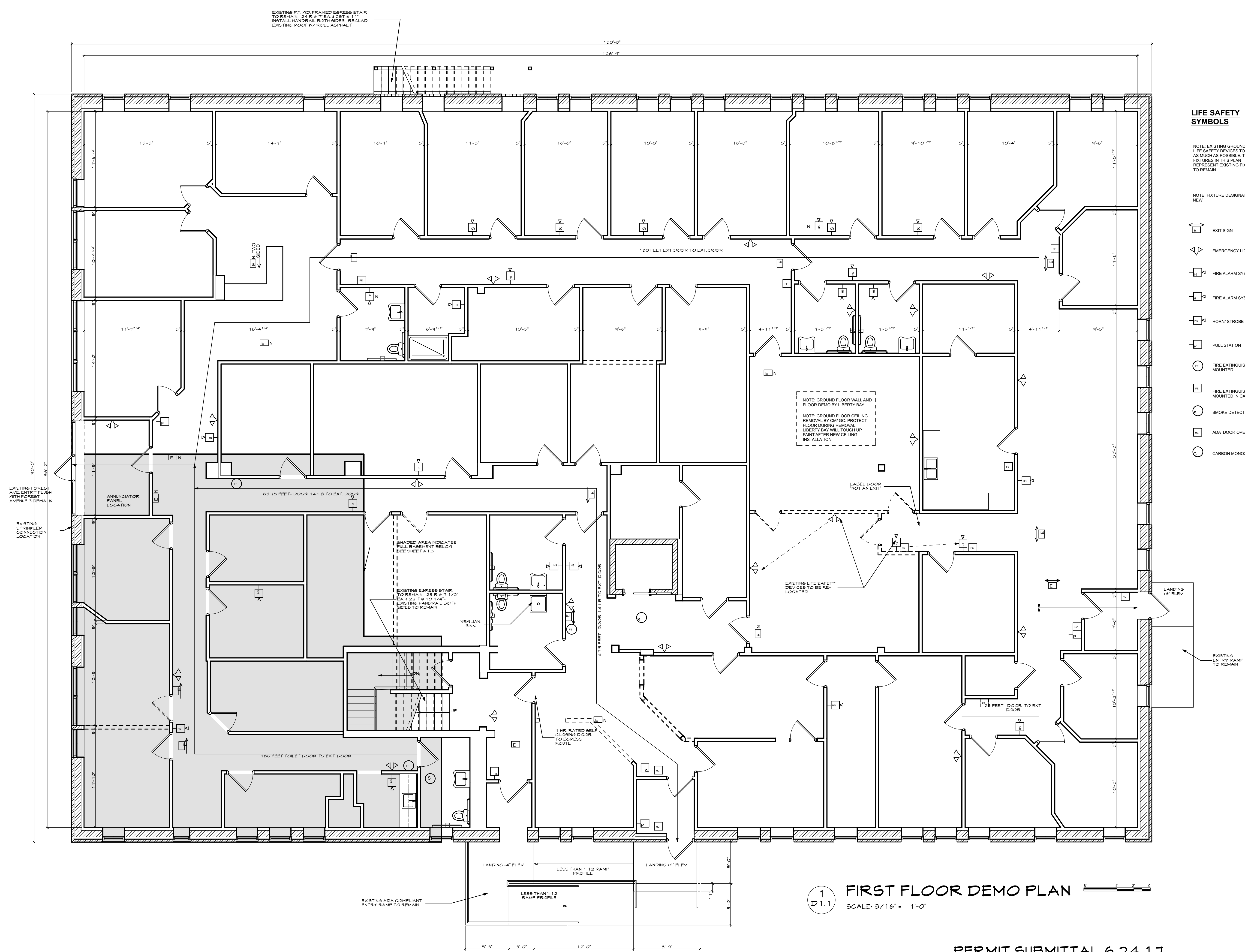


136 PLEASANT AVE.
PORTLAND, ME 04103
P 207.775.2696
F 207.775.3631
www.whipplecallender.com

MARK	DATE	DESCRIPTION
1	6.24.17	PERMIT SUBMITTAL
	7.17.17	SFMO REVISIONS

DATE: 7/17/17 SFMO APPLICATION SET
CHECKED BY: JAD
DRAWN BY: CLBC
JOB: LIB 2017
SHEET TITLE: DEMO PLAN

D1.1



LIFE SAFETY SYMBOLS

NOTE: EXISTING GROUND FLOOR LIFE SAFETY DEVICES TO REMAIN AS MUCH AS POSSIBLE. THE FIXTURES IN THIS PLAN REPRESENT EXISTING FIXTURES TO REMAIN.

NOTE: FIXTURE DESIGNATED WITH "N" IS NEW

- EXIT SIGN
- EMERGENCY LIGHTING
- FIRE ALARM SYSTEM - HORN
- FIRE ALARM SYSTEM - STROBE
- HORN/STROBE
- PULL STATION
- FIRE EXTINGUISHER - WALL MOUNTED
- FIRE EXTINGUISHER - WALL MOUNTED IN CABINET
- SMOKE DETECTOR
- ADA DOOR OPENER
- CARBON MONOXIDE DETECTOR

1 FIRST FLOOR DEMO PLAN
SCALE: 3/16" = 1'-0"

PERMIT SUBMITTAL 6.24.17

THIS DRAWING IS AN INSTRUMENT OF SERVICE AND SHALL REMAIN THE PROPERTY OF WHIPPLE CALLENDER ARCHITECTS. IT SHALL NOT BE USED FOR ANY OTHER PURPOSE THAT FOR WHICH IT IS SPECIFICALLY FURNISHED.