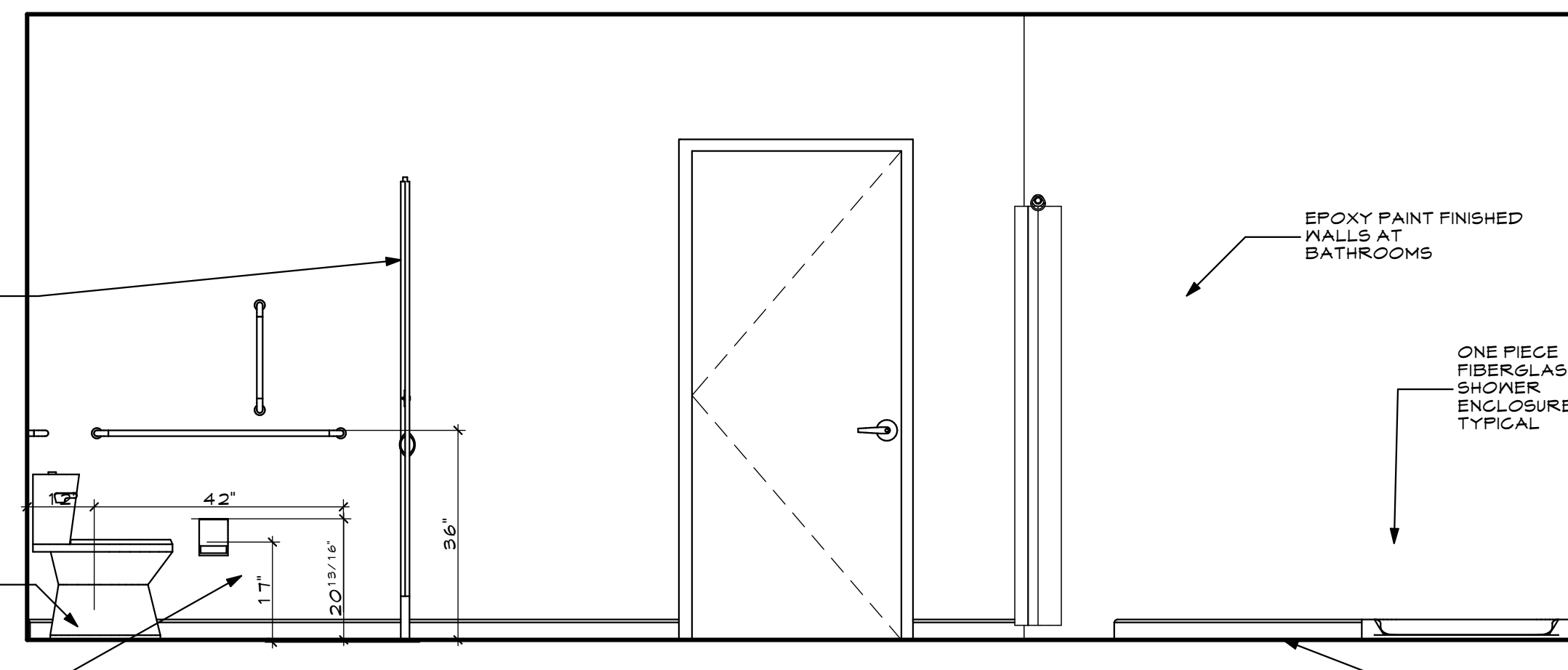
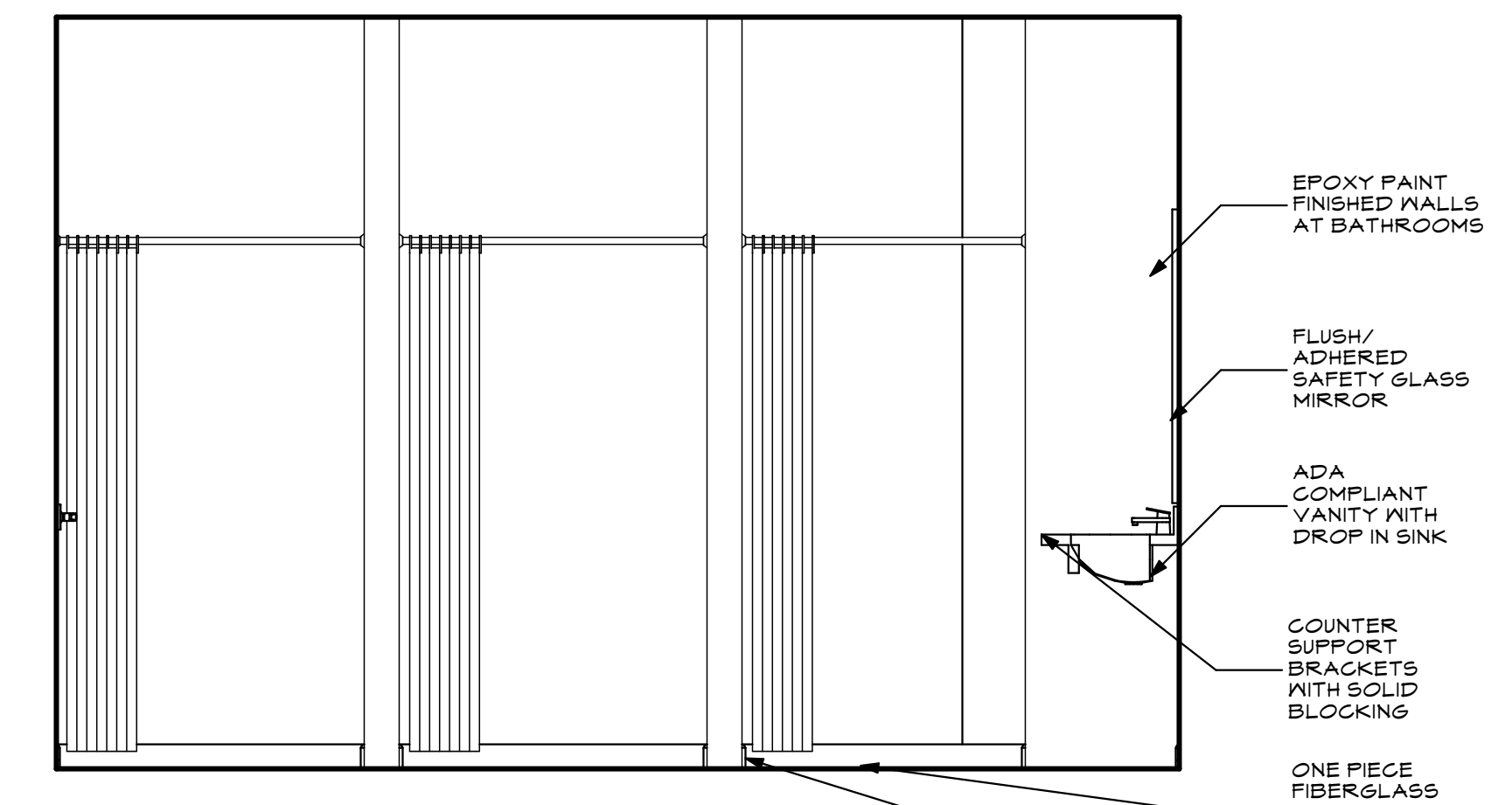


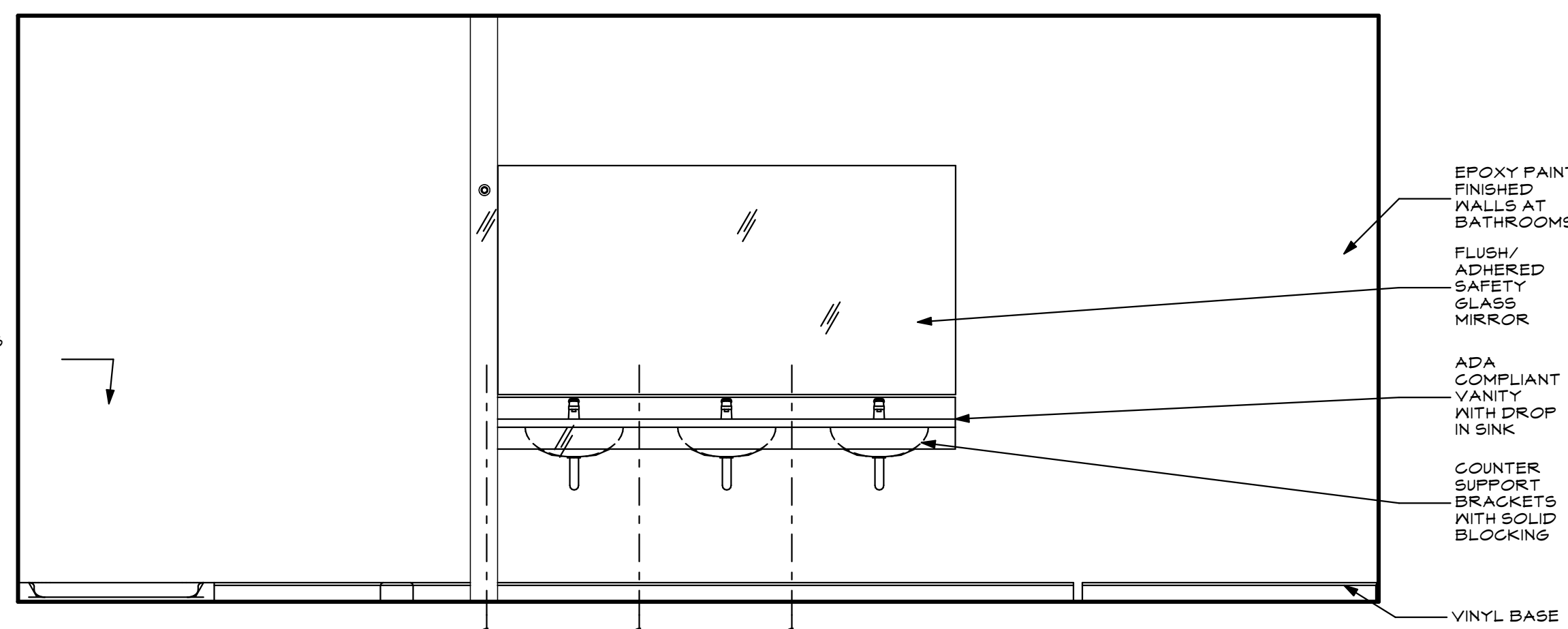
**1**  
A5.2 INT. ELEV. NEW WOMENS BATH  
SCALE: 1/2" = 1'-0"



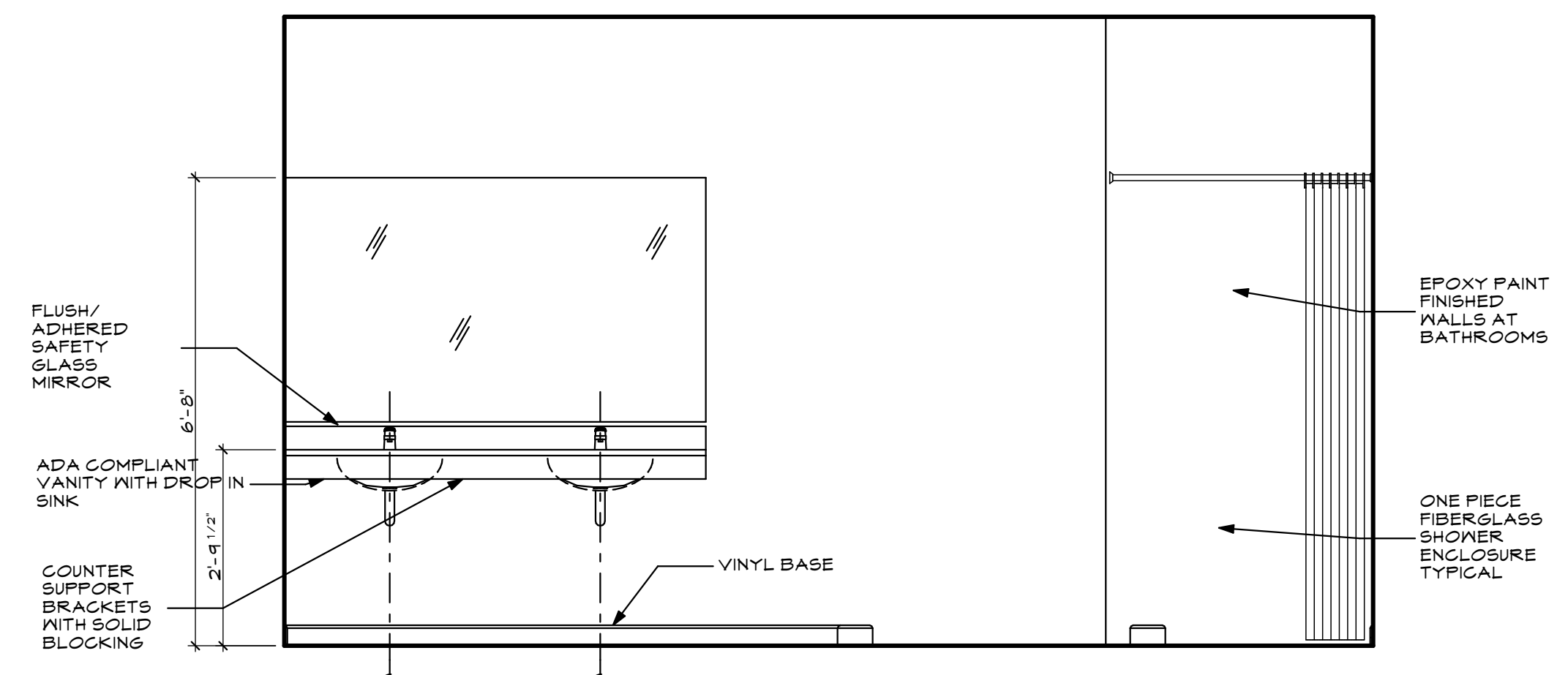
**2**  
A5.2 INT. ELEV. NEW WOMENS BATH  
SCALE: 1/2" = 1'-0"



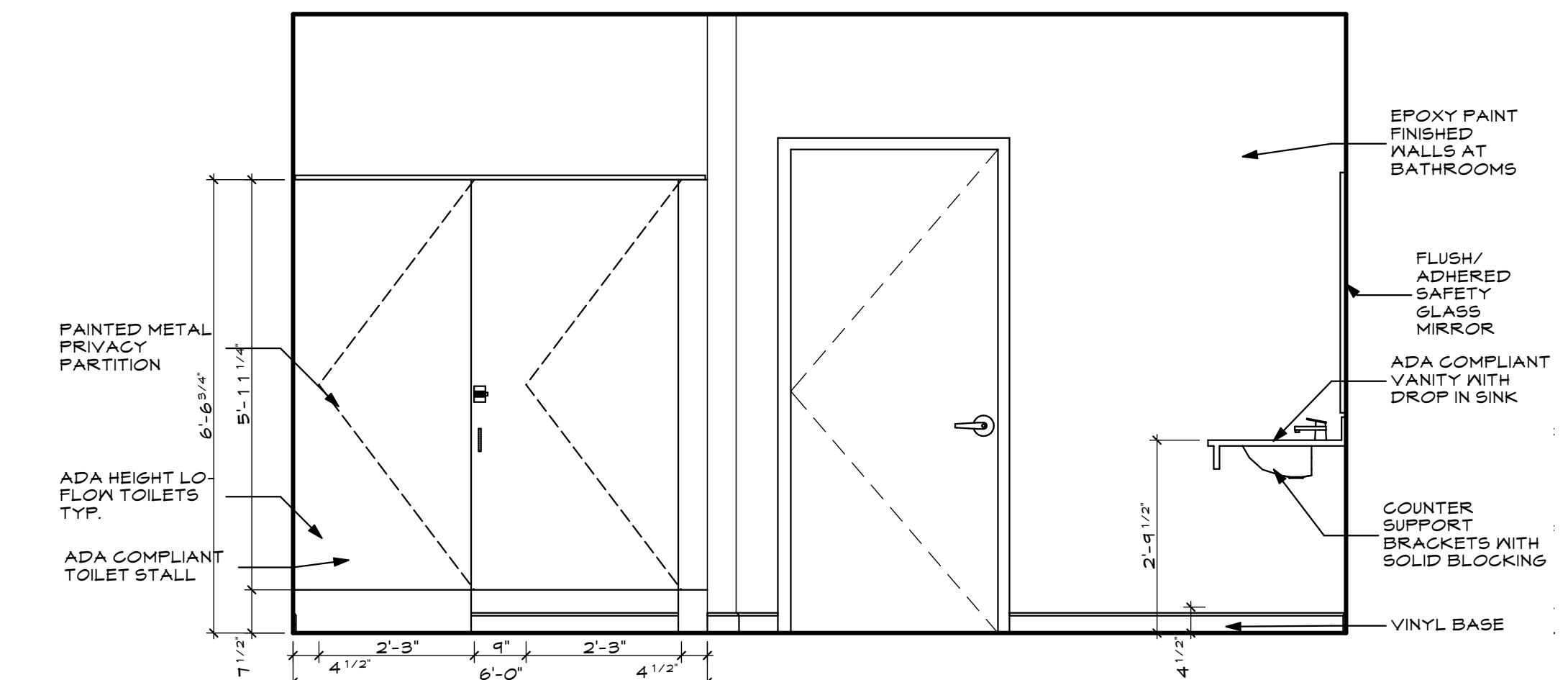
**3**  
A5.2 INT. ELEV. NEW WOMENS BATH  
SCALE: 1/2" = 1'-0"



**4**  
A5.2 INT. ELEV. NEW WOMENS BATH  
SCALE: 1/2" = 1'-0"

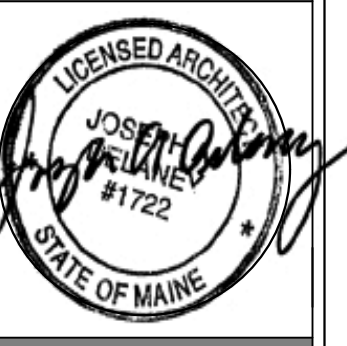


**5**  
A5.2 INT. ELEV. NEW MENS BATH  
SCALE: 1/2" = 1'-0"

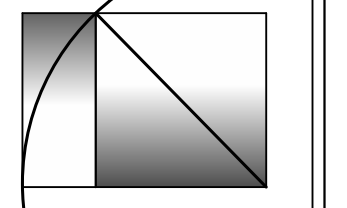


**8**  
A5.2 INT. ELEV. NEW MENS BATH  
SCALE: 1/2" = 1'-0"

LIBERTY BAY  
349 FOREST AVENUE PORTLAND, MAINE 04101



WHIPPLE CALLENDER ARCHITECTS



136 PLEASANT AVE.  
PORTLAND, ME 04103  
P 207.775.2696  
F 207.775.3631  
www.whipplecallender.com

MARK	DATE	DESCRIPTION
1	6.24.17	PERMIT SUBMITTAL
	7.17.17	SFMO REVISIONS

DATE: 7/17/17 SFMO APPLICATION SET  
CHECKED BY: JAD  
DRAWN BY: CLBC  
JOB: LIB 2017  
SHEET TITLE:

INT. ELEV.

**A5.2**

PERMIT SUBMITTAL 6.24.17

THIS DRAWING IS AN INSTRUMENT OF SERVICE AND SHALL REMAIN THE PROPERTY OF WHIPPLE CALLENDER ARCHITECTS. IT SHALL NOT BE USED FOR ANY OTHER PURPOSE THAT FOR WHICH IT IS SPECIFICALLY FURNISHED.