



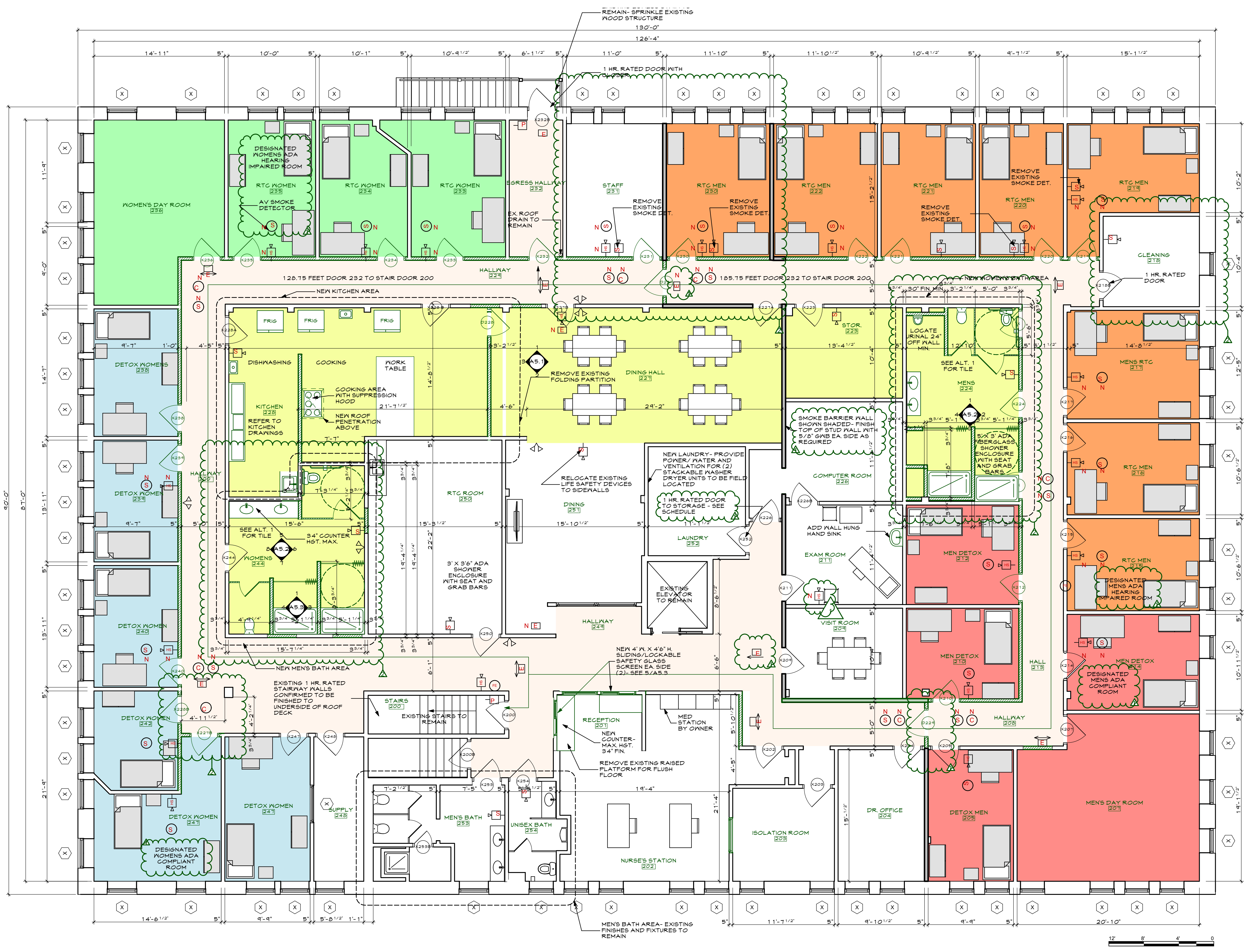
WHIPPLE CALLENDER ARCHITECTS

136 PLEASANT AVE.
PORTLAND, ME 04103
P 207.775.3696
F 207.775.3631
www.whipplecallender.com

MARK	DESCRIPTION	DATE
1	PERMIT SUBMITTAL	6.24.17
2	SMFO REVISIONS	7.11.17
3	PLAN REVISIONS	1.26.18

DATE: 1/26/18 SFMO APPLICATION SET
CHECKED BY: JAD
DRAWN BY: CLBC
JOB: LIB 2017
SHEET TITLE: FLR_2 PLAN

A1.2



LIFE SAFETY SYMBOLS
NOTE: EXISTING FLOOR TWO LIFE SAFE DEVICES TO REMAIN AS MUCH AS POSSIBLE. THE FIXTURES THAT HAVE BEEN ADDED INCLUDE THE HORN/STROBES AND SMOKE DETECTORS SHOWN IN THE MENS AND WOMENS RTC & DETOX ROOMS.
NOTE: FIXTURE DESIGNATED WITH "N" IS NEW

- EXIT SIGN
- EMERGENCY LIGHTING
- FIRE ALARM SYSTEM - HORN
- FIRE ALARM SYSTEM - STROBE
- HORN/STROBE
- PULL STATION
- FIRE EXTINGUISHER - WALL MOUNTED
- FIRE EXTINGUISHER - WALL MOUNTED IN CABINET
- SMOKE DETECTOR
- ADA DOOR OPENER
- CARBON MONOXIDE DETECTOR

PLAN COLOR KEY

- WOMEN'S DETOX
- WOMEN'S RTC
- MEN'S DETOX
- MEN'S RTC
- RENOVATED ROOMS

2 SECOND FLOOR PLAN
SCALE: 3/16" = 1'-0"

PERMIT SUBMITTAL 6.24.17

THIS DRAWING IS AN INSTRUMENT OF SERVICE AND SHALL REMAIN THE PROPERTY OF WHIPPLE CALLENDER ARCHITECTS. IT SHALL NOT BE USED FOR ANY OTHER PURPOSE THAN THAT FOR WHICH IT IS SPECIFICALLY FURNISHED.