

WHIPPLE  
CALLENDER  
ARCHITECTS

136 PLEASANT AVE.  
PORTLAND, ME 04103  
P 207.775.2696  
F 207.775.3631  
www.whipplecallender.com

DESCRIPTION  
PERMIT SUBMITTAL  
SFMO REVISIONS

DATE  
6.24.17  
1.1.17

DATE  
7/17/17 SFMO  
APPLICATION SET

CHECKED BY  
JAD

DRAWN BY  
CLBC

JOB  
LIB 2017

SHEET TITLE  
GROUND FLOOR PLAN

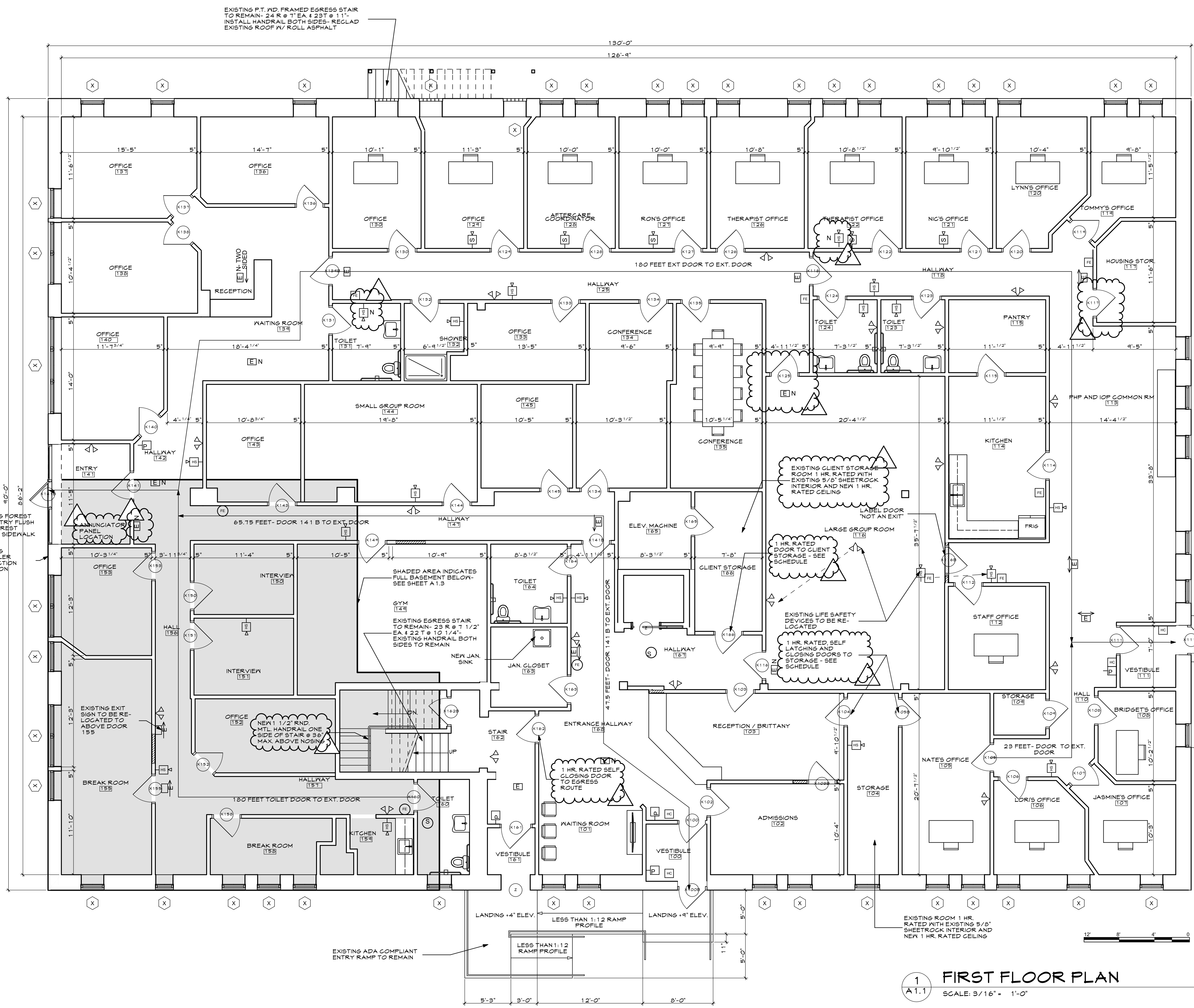
A1.1

**LIFE SAFETY SYMBOLS**

NOTE: EXISTING GROUND FLOOR LIFE SAFETY DEVICES TO REMAIN AS MUCH AS POSSIBLE. THE FIXTURES IN THIS PLAN REPRESENT EXISTING FIXTURES TO REMAIN.

NOTE: FIXTURE DESIGNATED WITH "N" IS NEW

- EXIT SIGN
- EMERGENCY LIGHTING
- FIRE ALARM SYSTEM - HORN
- FIRE ALARM SYSTEM - STROBE
- HORN/STROBE
- PULL STATION
- FIRE EXTINGUISHER - WALL MOUNTED
- FIRE EXTINGUISHER - WALL MOUNTED IN CABINET
- SMOKE DETECTOR
- ADA DOOR OPENER
- CARBON MONOXIDE DETECTOR



**1** FIRST FLOOR PLAN  
SCALE: 3/16" = 1'-0"

PERMIT SUBMITTAL 6.24.17

THIS DRAWING IS AN INSTRUMENT OF SERVICE AND SHALL REMAIN THE PROPERTY OF WHIPPLE CALLENDER ARCHITECTS. IT SHALL NOT BE USED FOR ANY OTHER PURPOSE THAT FOR WHICH IT IS SPECIFICALLY FURNISHED.