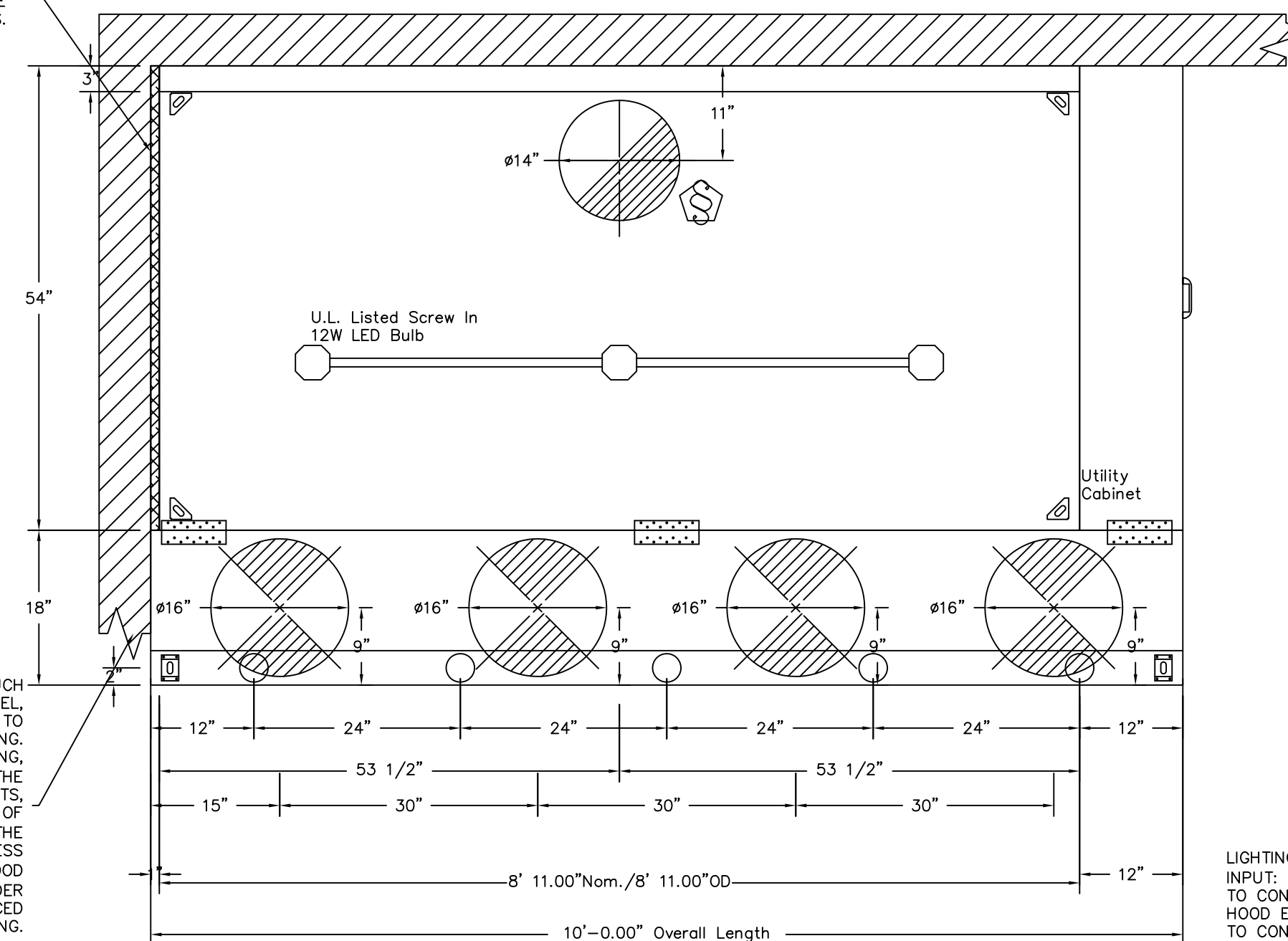


1" LAYER OF INSULATION FACTORY INSTALLED IN 1.00" END STANDOFF MEETS 0" REQUIREMENTS CLEARANCE TO COMBUSTIBLE SURFACES.



PLAN VIEW - Hood #1  
8' 11.00" LONG 5424ND-2-PSP-F

INSTALLER MUST CONFIRM HOOD IS INSTALLED SUCH THAT THE SPECIFIED WALL, ACTING AS AN END PANEL, IS MATED TIGHT TO THE CORRECT END OF HOOD TO ACHIEVE A REDUCED MINIMUM EXHAUST CFM LISTING. NON-COMPLIANCE WILL NULLIFY THE ETL LISTING, VOID THE MANUFACTURER'S WARRANTY, AND HOLD THE CONTRACTOR LIABLE FOR ANY AND ALL LOSSES, COSTS, AND EXPENSES RELATED TO THE NON-COMFORMANCE OF THE MANUFACTURER'S SPECIFIED INSTRUCTION. THE WALL ACTING AS AN END PANEL MUST EXTEND NO LESS THAN 20" FROM THE INTERSECTING WALL ON WHICH HOOD IS MOUNTED AND MUST EXTEND NO LESS THAN 20" UNDER BOTTOM OF HOOD TO BE ELIGIBLE FOR REDUCED MINIMUM EXHAUST CFM LISTING.

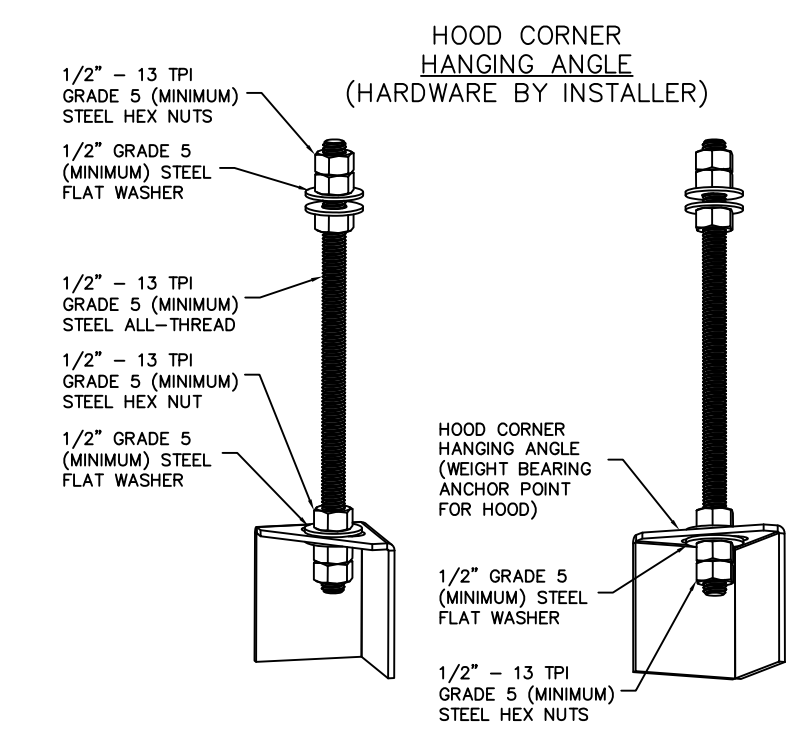
LIGHTING FOR ACPSP Job # 3060483 - Hood #1  
INPUT: 120V AC, 1 Phase, 50/60Hz, 3.5 Watts per light.  
TO CONTROL LIGHTS WITH HOOD LIGHT SWITCH, WIRE PER HOOD ELECTRICAL CONTROL PANEL SCHEMATIC.  
TO CONTROL LIGHTS WITH BUILDING LIGHT SWITCH, WIRE BLACK AND WHITE WIRE TO A 120VAC SERVICE.  
END TO END ACPSP'S REQUIRE 120VAC FIELD WIRING FROM J-BOX TO J-BOX. REPLACE LIGHTS WITH LED LIGHTS ONLY.

System Design Verification (SDV)

If ordered, CAS Service will perform a System Design Verification (SDV) once all equipment has had a complete start up per the Operation and Installation Manual. Typically, the SDV will be performed after all inspections are complete.

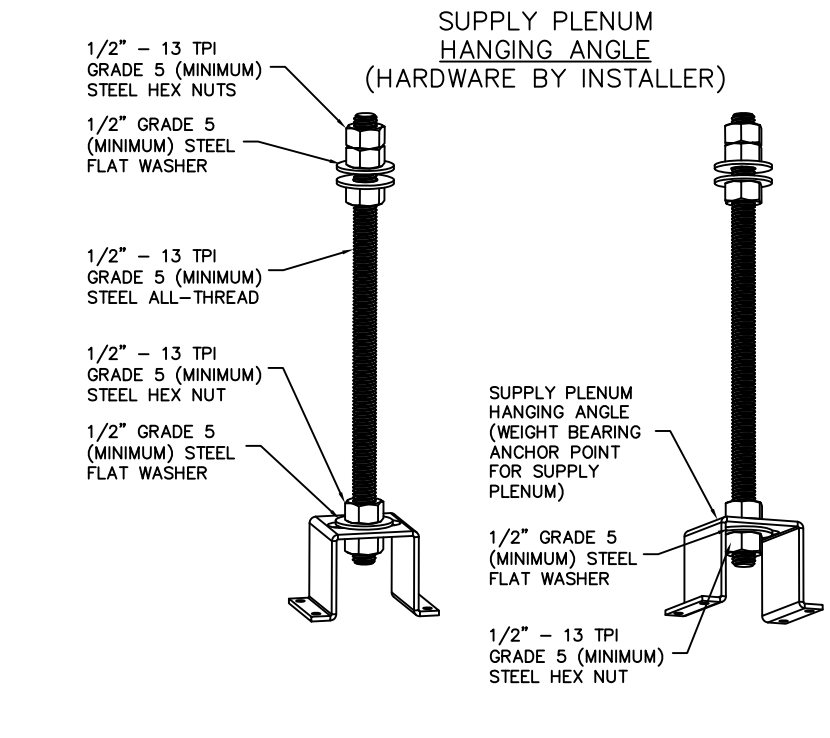
Any field related discrepancies that are discovered during the SDV will be brought to the attention of the general contractor and corresponding trades on site. These issues will be documented and forwarded to the appropriate sales office. If CAS Service has to resolve a discrepancy that is a field issue, the general contractor will be notified and billed for the work. Should a return trip be required due to any field related discrepancy that cannot be resolved during the SDV, there will be additional trip charges.

During the SDV, CAS Service will address any discrepancy that is the fault of the manufacturer. Should a return trip be required, the general contractor and appropriate sales office will be notified. There will be no additional charges for manufacturer discrepancies.



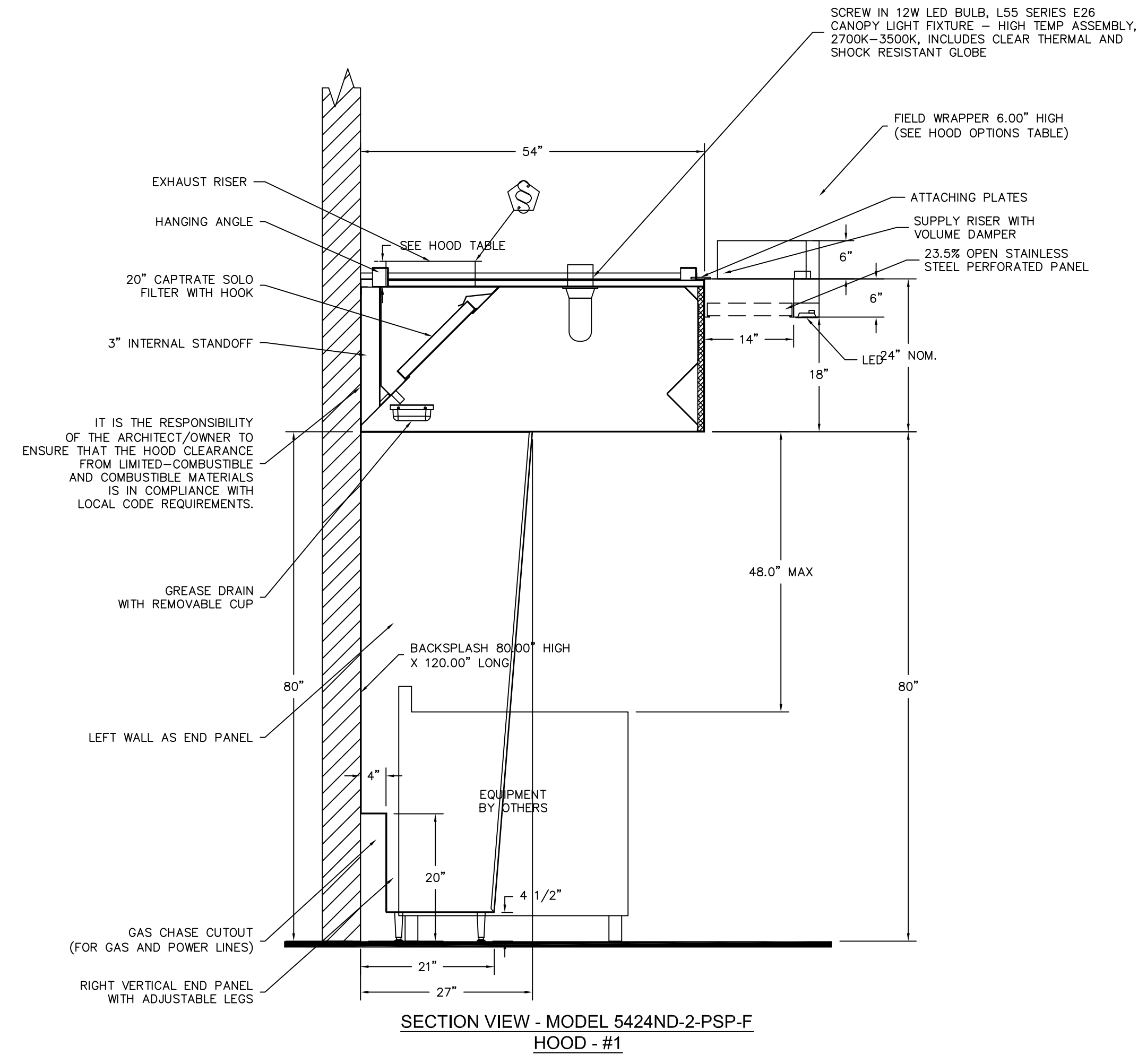
ASSEMBLY INSTRUCTIONS

HANGING ANGLE MUST BE SUPPORTED WITH 1/2" - 13 TPI GRADE 5 (MINIMUM) ALL-THREAD. SANDWICH HANGING ANGLES AND CEILING ANCHOR POINTS WITH 1/2" GRADE 5 (MINIMUM) STEEL FLAT WASHERS AND 1/2" - 13 TPI GRADE 5 (MINIMUM) HEX NUTS AS SHOWN. MUST USE DOUBLED HEX NUT CONFIGURATION BENEATH HOOD HANGING ANGLES AND ABOVE CEILING ANCHORS. MAINTAIN 1/4" OF EXPOSED THREADS BENEATH BOTTOM HEX NUT. TORQUE ALL HEX NUTS TO 57 FT-LBS.



ASSEMBLY INSTRUCTIONS

HANGING ANGLE MUST BE SUPPORTED WITH 1/2" - 13 TPI GRADE 5 (MINIMUM) ALL-THREAD. SANDWICH HANGING ANGLES AND CEILING ANCHOR POINTS WITH 1/2" GRADE 5 (MINIMUM) STEEL FLAT WASHERS AND 1/2" - 13 TPI GRADE 5 (MINIMUM) HEX NUTS AS SHOWN. MUST USE DOUBLED HEX NUT CONFIGURATION ABOVE CEILING ANCHORS. SINGLE HEX NUT BENEATH HANGING ANGLE IS ACCEPTABLE FOR PSP HANGING ANGLES. MAINTAIN 1/4" OF EXPOSED THREADS BENEATH BOTTOM HEX NUT. TORQUE ALL HEX NUTS TO 57 FT-LBS.



SECTION VIEW - MODEL 5424ND-2-PSP-F  
HOOD - #1

REVISIONS	
DESCRIPTION	DATE



MAINE OFFICE

PO Box 86, 179 South Rd., Topshfield, ME 04490 PHONE: (207) 796-2590 FAX: (919) 227-5946 EMAIL: [egc2@captivetraining.com](mailto:egc2@captivetraining.com) [www.captivetraining.com](http://www.captivetraining.com)

Liberty Bay  
343 Forest Ave,  
PORTLAND, ME, 04101

DATE: 6/22/2017
DWG.#: 3060483
DRAWN BY: BFC-21
SCALE: 3/4" = 1'-0"
MASTER DRAWING

SHEET NO.  
2

Foodservice Consultant:  
**TJM Consulting, Inc.**  
273 Main Street, Suite 5  
Yarmouth, Maine 04096  
(207) 847-3337 [tjmconsulting@maine.rr.com](mailto:tjmconsulting@maine.rr.com)

Architect:  
**Whipple Callender Architects**  
136 Pleasant Avenue  
Portland, Maine 04103

Project:  
**Liberty Bay Kitchen**  
343 Forest Avenue  
Portland, Maine 04101

Drawing: **Foodservice Equipment Exhaust Hood Detail (2)**  
Scale: 3/4" = 1'-0"  
Date: June 30, 2017

SHEET:  
**FS-8**