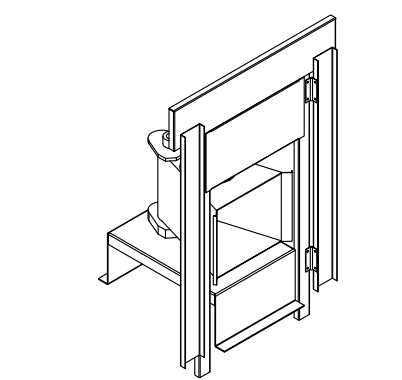
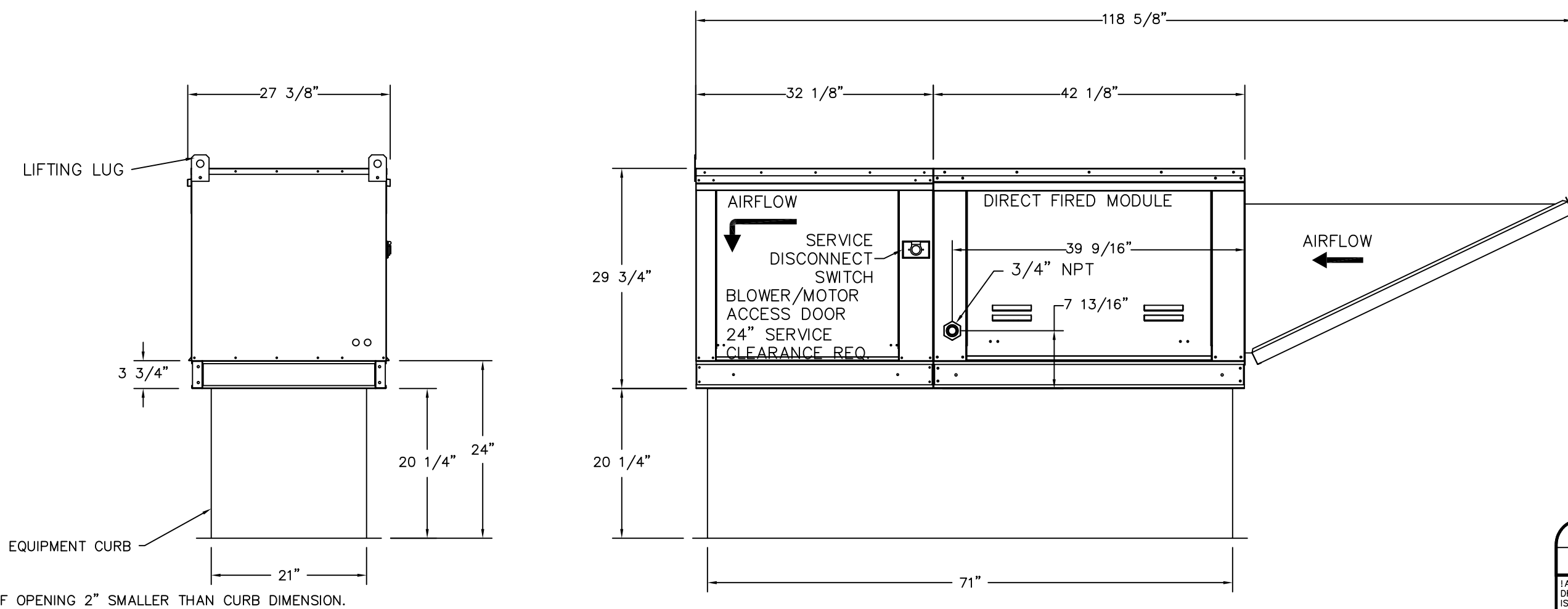
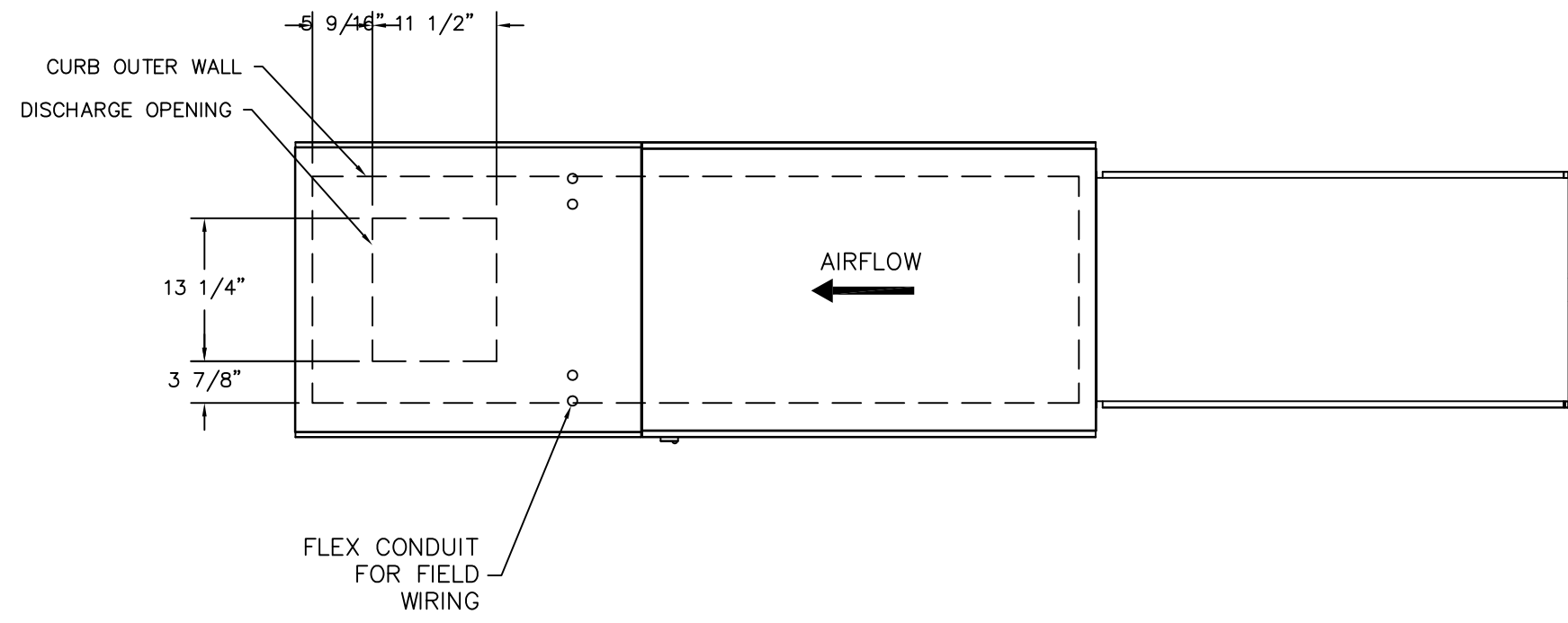


- FAN #2 A1-D-250-150 - HEATER
1. DIRECT GAS FIRED HEATED MAKE UP AIR UNIT WITH 15" DIRECT DRIVE FAN
 2. INTAKE HOOD WITH EZ FILTERS
 3. DOWN DISCHARGE - AIR FLOW RIGHT -> LEFT
 4. COOLING INTERLOCK RELAY, 24VAC COIL, 120V CONTACTS. LOCKS OUT BURNER CIRCUIT WHEN AC IS ENERGIZED.
 5. MOTORIZED BACK DRAFT DAMPER 16" X 18" FOR SIZE 1 STANDARD & MODULAR HEATER AND UNTEMPERED UNITS W/EXTENDED SHAFT, STANDARD GALVANIZED CONSTRUCTION, 3/4" REAR FLANGE, TFB120S ACTUATOR INCLUDED
 6. FULL CRATING FOR COMMERCIAL HEATERS FOR SHIPPING.
 7. LOW FIRE START. ALLOWS THE BURNER CIRCUIT TO ENERGIZE WHEN THE MODULATION CONTROL IS IN A LOW FIRE POSITION.
 8. GAS PRESSURE GAUGE, 0-35", 2.5" DIAMETER, 1/4" THREAD SIZE
 9. GAS PRESSURE GAUGE, -5 TO +15 INCHES WC, 2.5" DIAMETER, 1/4" THREAD SIZE
 10. 3 YEAR EXTENDED WARRANTY FOR FAN MOTOR. PARTS ONLY, DOES NOT INCLUDE LABOR.
 11. SEPARATE 120VAC WIRING PACKAGE FOR MAKE-UP AIR UNITS. OPTION MUST BE SELECTED WHEN MOUNTING VFD IN PREWIRE PANEL OR WITH DCV PACKAGE. PROVIDES SEPARATE 120VAC INPUT TO SUPPLY FAN. THIS 120V SIGNAL MUST BE RUN BY ELECTRICIAN FROM DCV TO MUA SWITCH.

SUPPLY SIDE HEATER INFORMATION:

WINTER TEMPERATURE = 4°F. TEMP. RISE = 71°F.
 BTUs CALCULATED OFF STANDARD AIR DENSITY
 OUTPUT BTUs AT ALTITUDE OF 0.0 ft. = 123071
 INPUT BTUs AT ALTITUDE OF 0.0 ft. = 133773

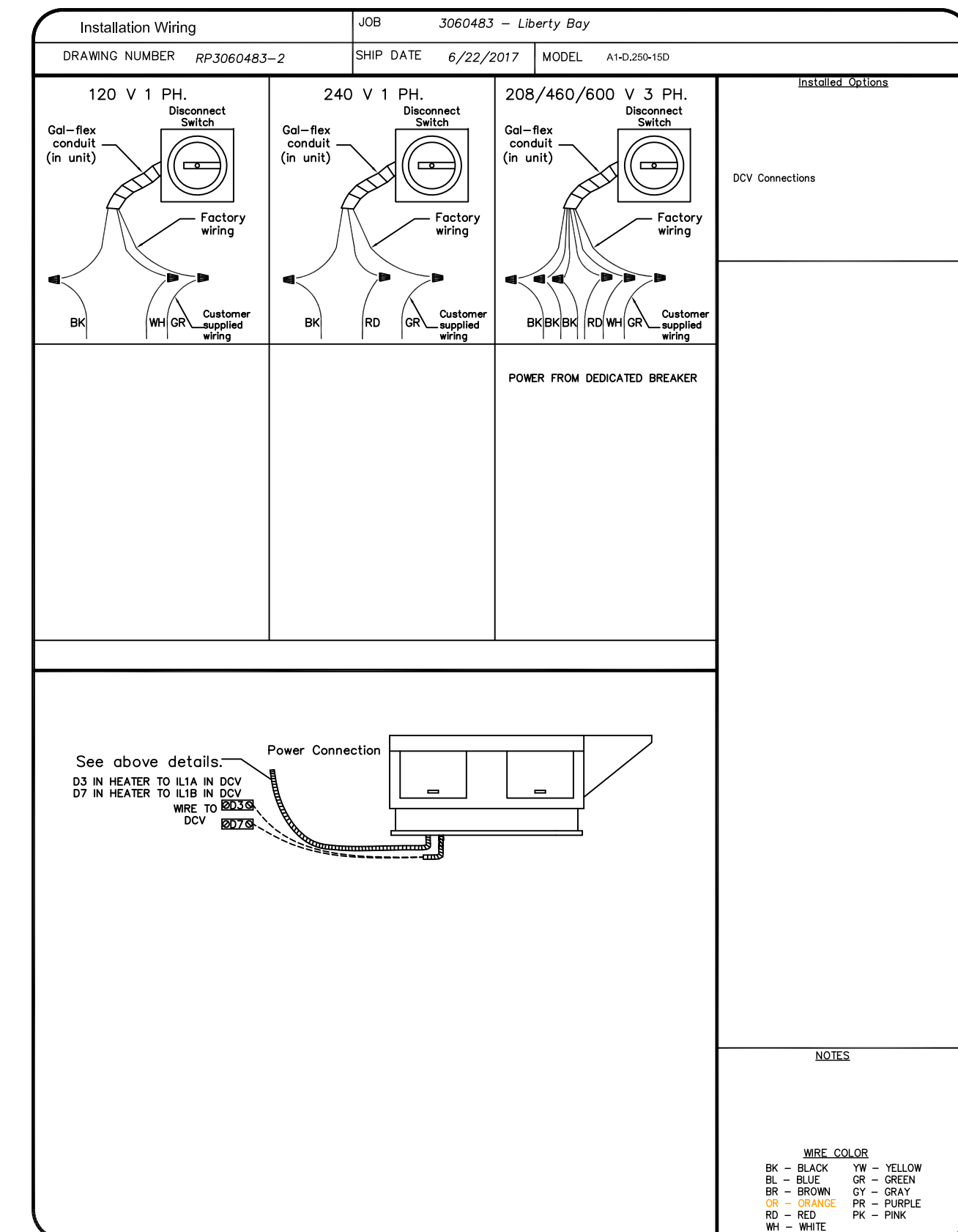
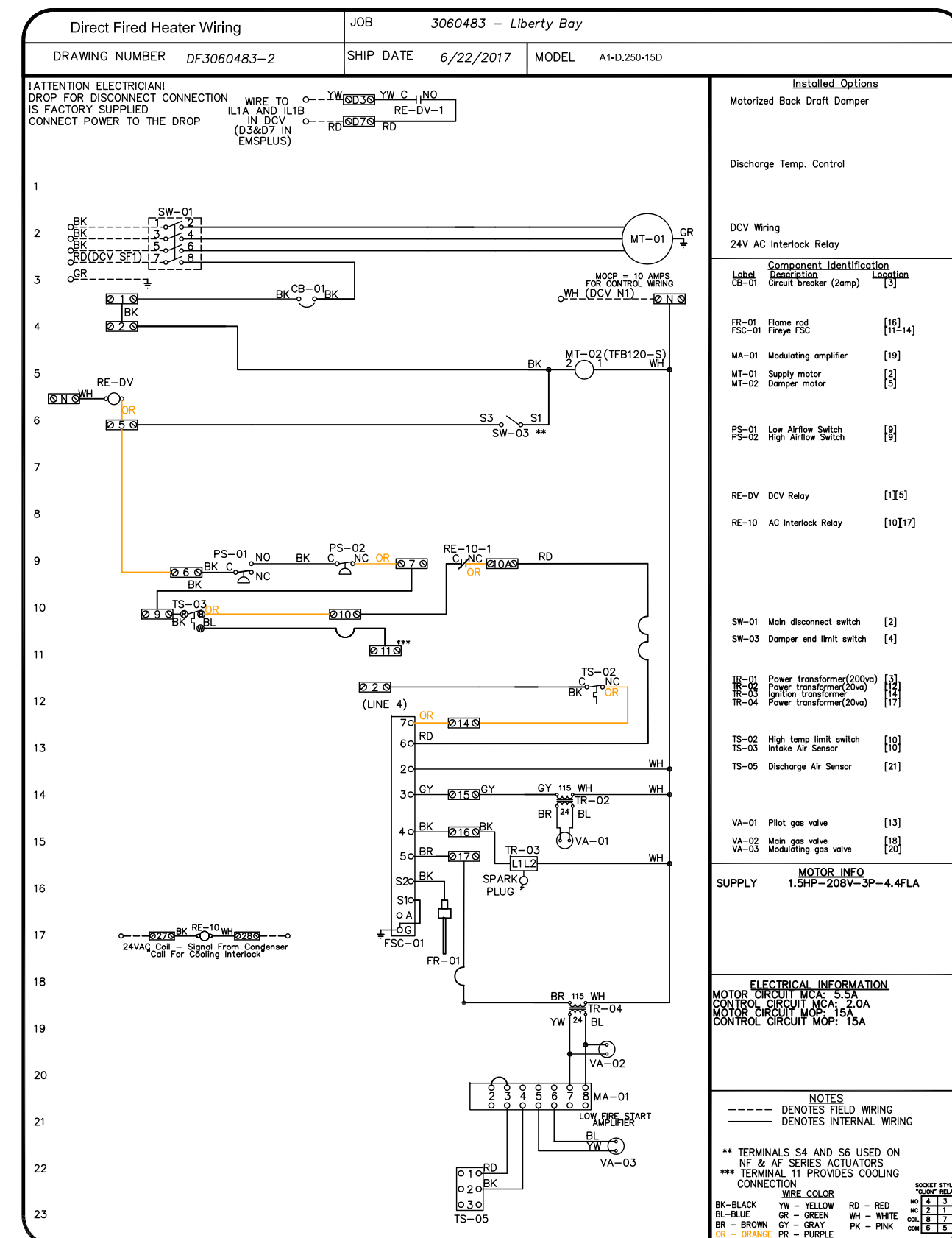
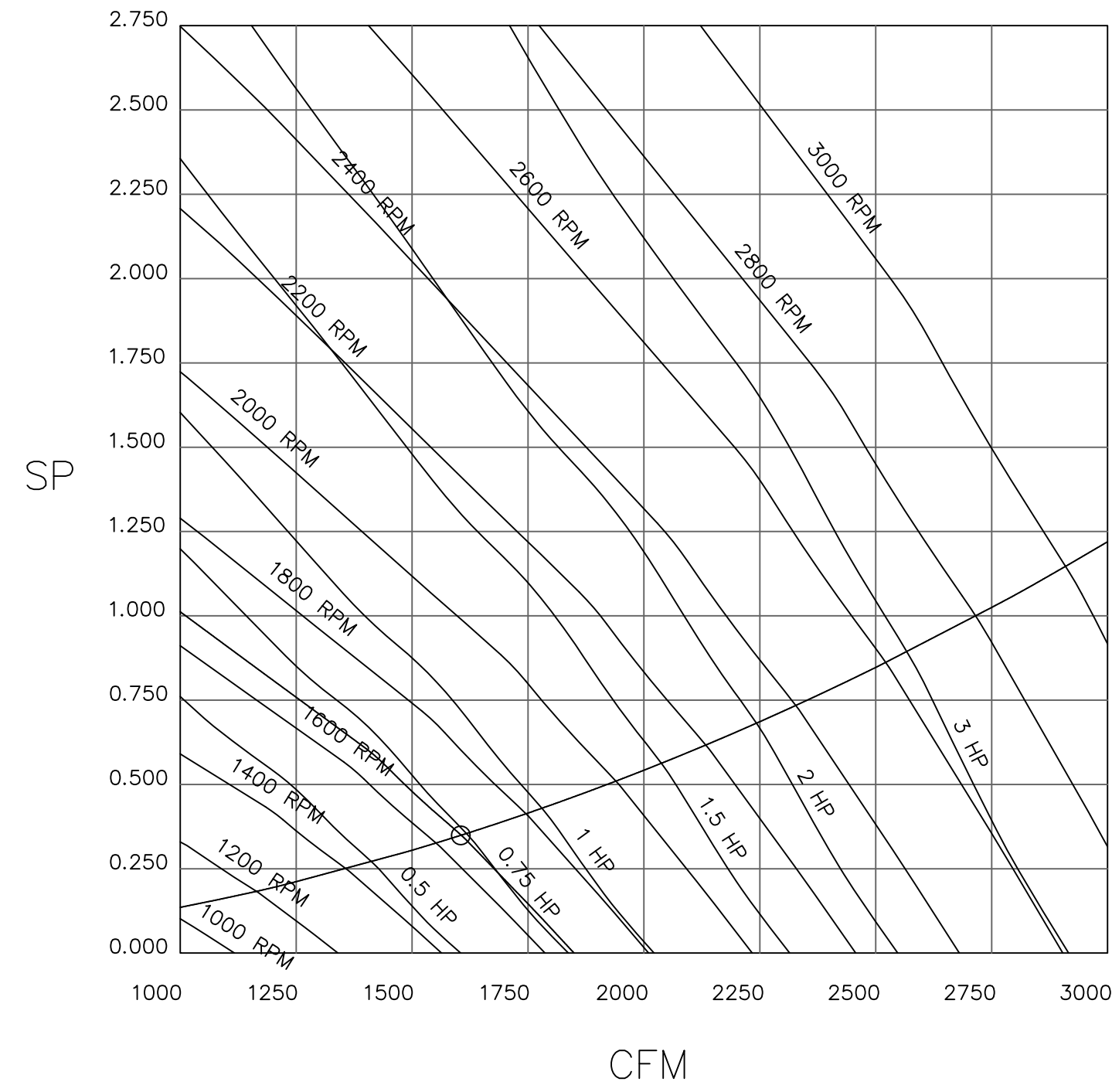


Direct Fired (DF) Profile Plate Assembly

Direct Fired Profile Plate Specifications:
Description:
 Direct fired burners shall have patented (US Patent No.: US662952B2), self-adjusting profile plates designed to ensure proper air velocity and pressure drop across the burner. Profile plates shall allow burners to achieve clean combustion by limiting by-product levels to a maximum of 50ppm of carbon monoxide (CO), and 0.5ppm of nitrogen dioxide (NO2).
Application:
 Spring-loaded burner profile plates are engineered to automatically react to the momentum of a fresh air stream, without the need for any motors or actuators to mechanically adjust them. With this feature, all DF units are designed for demand control ventilation (DCV) requirements.
Certifications:
 All profile plate assemblies shall be included in the DF unit's ETL listing and comply with combined safety standards ANSI Z83.4 and CSA 3.7 (non-recirculating DF heaters) and ANSI Z83.18 (recirculating DF heaters).
General Construction:
 -Profile plates shall be formed from G90 galvanized steel.
 -Profile plates shall vary in size per unit.
 -Profile plates shall be mounted along the same plane as the discharge of the burner.
 -Design shall incorporate properly torqued, permanently mounted spring hinges.
 -Spring hinges shall be made from plated steel.

FAN#2 - HEATER PERFORMANCE CURVES.

1605 CFM, 0.349 SP @ 1656 RPM and 0.731 BHP at 25 feet and 75 deg F
 * Please note that these curves were adjusted for job specific temperature and altitude.



REVISIONS

DESCRIPTION	DATE

CAPTIVE

MAINE OFFICE
 www.captiveveair.com
 PO Box 86, 179 South Rd., Topsheld, ME 04489 PHONE: (207) 796-2590 FAX: (919) 227-5946 EMAIL: reg2.captiveve.com

Liberty Bay
 343 Forest Ave,
 PORTLAND, ME, 04101

DATE: 6/22/2017
 DWG.#: 3060483
 DRAWN BY: BFC-21
 SCALE: 3/4" = 1'-0"
 MASTER DRAWING

SHEET NO. 7

Architect: Whipple Callender Architects
 136 Pleasant Avenue
 Portland, Maine 04103

Project: Liberty Bay Kitchen
 343 Forest Avenue
 Portland, Maine 04101

Drawing: Foodservice Equipment Exhaust Hood Details (7)
 Scale: 3/4" = 1'-0"
 Date: June 30, 2017

Revisions:
 SHEET: FS-13