



APPLICATION FOR EXEMPTION FROM SITE PLAN REVIEW

Mastacan Restaurants Inc.  
Applicant

Application Date

807 Lexington St. Judd FL.  
Applicant's Mailing Address

Burner King  
Project Name/Description

Marc Rochow 617-645-1596  
Consultant/Agent/Phone Number

449 Forest Ave. Bithand  
Address of Proposed Site

CBL: 111-A-14

Description of Proposed Development:

Replace existing store front skylights / siding, down x  
shingles facade repair.

Please Attach Sketch/Plan of Proposal/Development

Criteria for Exemptions:

See Section 14-523 (4) on back side of form

Applicant's Assessment (Yes, No, N/A)	Planning Office Use Only
yes	✓
NO	✓
NO	✓
yes	✓
NO	✓
NO	✓
yes	✓
yes.	✓

- a) Within Existing Structures; No New Buildings, Demolitions or Additions
- b) Footprint Increase Less Than 500 Sq. Ft.
- c) No New Curb Cuts, Driveways, Parking Areas
- d) Curbs and Sidewalks in Sound Condition/Comply with ADA
- e) No Additional Parking/ No Traffic Increase
- f) No Stormwater Problems
- g) Sufficient Property Screening
- h) Adequate Utilities

Planning Division Use Only

Exemption Granted  Partial Exemption  Exemption Denied

subject to the proposed sign  
being reviewed and approved by the  
Zoning Administrator

Planner's Signature

Barbara Bishoff

Date

Aug 22, 2008



NIF Village Assoc.

Shed Building

Two Story Building

NIF Larkin

NIF Mc Murry

NIF Eaton

ON SITE SIGN NOTES

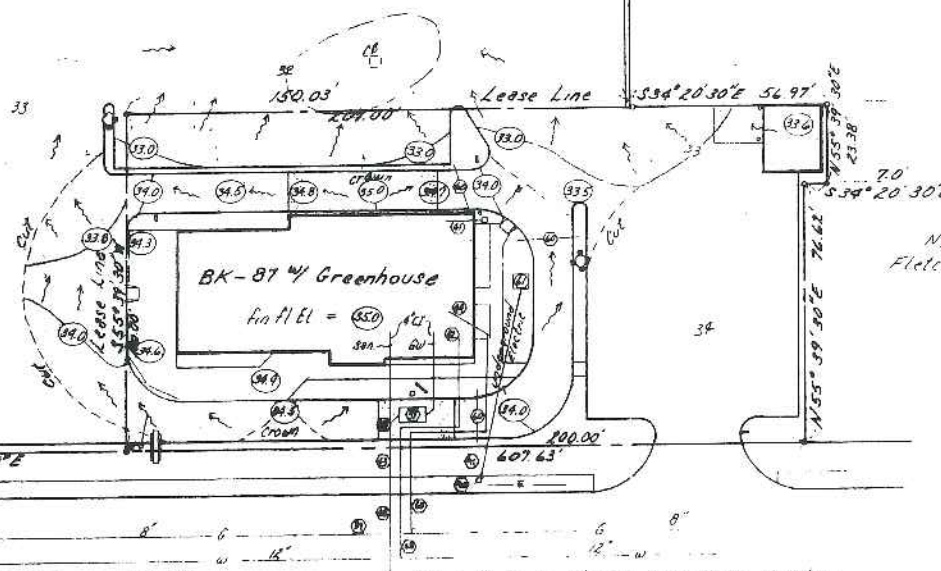
- 1 CLEARANCE SIGN 8' x 8' (NON-ILLUM.)
- 2 ORDER STATION
- 3 BURIED SIGN LOSS
- 4 DRIVE THRU
- 5 DIRECTIONAL ARROW
- 6 THANK YOU
- 7 ENTER ONLY
- 8 EXIT ONLY
- 9 NO EXIT
- 10 ONE WAY
- 11 RIGHT TURN ONLY
- 12 DO NOT ENTER
- 13 MESSAGE/SYMBOL BOTH SIDES

LEGEND

- 1 SITE REFERENCE NOTE
- 2 BUILDING TIE
- 3 PROPOSED YARD LIGHT
- 4 EXISTING CURB
- 5 PROPOSED CURB
- 6 EXISTING CURB/CUTTER
- 7 PROPOSED CURB/CUTTER
- 8 EXISTING EDGE OF PAVEMENT
- 9 PROPOSED EDGE OF PAVEMENT
- 10 EXISTING SPOT ELEVATION
- 11 EXISTING CONTOUR
- 12 PROPOSED PAVEMENT ELEVATION
- 13 PROPOSED CURB/PAVEMENT ELEVATION
- 14 EXISTING GAS LINE
- 15 PROPOSED GAS LINE
- 16 EXISTING WATER LINE
- 17 PROPOSED WATER LINE
- 18 EXISTING SANITARY LINE
- 19 PROPOSED SANITARY LINE
- 20 EXISTING STORM LINE
- 21 PROPOSED STORM LINE
- 22 EXISTING ELECTRIC LINE (LOW) OR (HIG)
- 23 PROPOSED TELEPHONE LINE (LOW) OR (HIG)
- 24 PROPOSED SPRINKLER SYSTEM
- 25 UNDERGROUND UTILITIES COMMON TRENCH
- 26 UNDERGROUND ELECTRIC TO UTILITY POLE
- 27 UNDERGROUND ELECTRIC TO PROPERTY LINE (CONCRETE IN CONCRETE)

SITE REFERENCE NOTES

- 1 6" CONCRETE CURB
- 2 4" CONCRETE CURB
- 3 4" CONCRETE CURB
- 4 4" CONCRETE CURB
- 5 4" CONCRETE CURB
- 6 4" CONCRETE CURB
- 7 4" CONCRETE CURB
- 8 4" CONCRETE CURB
- 9 4" CONCRETE CURB
- 10 4" CONCRETE CURB
- 11 4" CONCRETE CURB
- 12 4" CONCRETE CURB
- 13 4" CONCRETE CURB
- 14 4" CONCRETE CURB
- 15 4" CONCRETE CURB
- 16 4" CONCRETE CURB
- 17 4" CONCRETE CURB
- 18 4" CONCRETE CURB
- 19 4" CONCRETE CURB
- 20 4" CONCRETE CURB
- 21 4" CONCRETE CURB
- 22 4" CONCRETE CURB
- 23 4" CONCRETE CURB
- 24 4" CONCRETE CURB
- 25 4" CONCRETE CURB
- 26 4" CONCRETE CURB
- 27 4" CONCRETE CURB
- 28 4" CONCRETE CURB
- 29 4" CONCRETE CURB
- 30 4" CONCRETE CURB
- 31 4" CONCRETE CURB
- 32 4" CONCRETE CURB
- 33 4" CONCRETE CURB
- 34 4" CONCRETE CURB
- 35 4" CONCRETE CURB
- 36 4" CONCRETE CURB
- 37 4" CONCRETE CURB
- 38 4" CONCRETE CURB
- 39 4" CONCRETE CURB
- 40 4" CONCRETE CURB
- 41 4" CONCRETE CURB
- 42 4" CONCRETE CURB
- 43 4" CONCRETE CURB
- 44 4" CONCRETE CURB
- 45 4" CONCRETE CURB
- 46 4" CONCRETE CURB
- 47 4" CONCRETE CURB
- 48 4" CONCRETE CURB
- 49 4" CONCRETE CURB
- 50 4" CONCRETE CURB
- 51 4" CONCRETE CURB
- 52 4" CONCRETE CURB
- 53 4" CONCRETE CURB
- 54 4" CONCRETE CURB
- 55 4" CONCRETE CURB
- 56 4" CONCRETE CURB
- 57 4" CONCRETE CURB
- 58 4" CONCRETE CURB
- 59 4" CONCRETE CURB
- 60 4" CONCRETE CURB
- 61 4" CONCRETE CURB
- 62 4" CONCRETE CURB
- 63 4" CONCRETE CURB
- 64 4" CONCRETE CURB
- 65 4" CONCRETE CURB
- 66 4" CONCRETE CURB
- 67 4" CONCRETE CURB
- 68 4" CONCRETE CURB
- 69 4" CONCRETE CURB
- 70 4" CONCRETE CURB
- 71 4" CONCRETE CURB
- 72 4" CONCRETE CURB
- 73 4" CONCRETE CURB
- 74 4" CONCRETE CURB
- 75 4" CONCRETE CURB
- 76 4" CONCRETE CURB
- 77 4" CONCRETE CURB
- 78 4" CONCRETE CURB
- 79 4" CONCRETE CURB
- 80 4" CONCRETE CURB
- 81 4" CONCRETE CURB
- 82 4" CONCRETE CURB
- 83 4" CONCRETE CURB
- 84 4" CONCRETE CURB
- 85 4" CONCRETE CURB
- 86 4" CONCRETE CURB
- 87 4" CONCRETE CURB
- 88 4" CONCRETE CURB
- 89 4" CONCRETE CURB
- 90 4" CONCRETE CURB
- 91 4" CONCRETE CURB
- 92 4" CONCRETE CURB
- 93 4" CONCRETE CURB
- 94 4" CONCRETE CURB
- 95 4" CONCRETE CURB
- 96 4" CONCRETE CURB
- 97 4" CONCRETE CURB
- 98 4" CONCRETE CURB
- 99 4" CONCRETE CURB
- 100 4" CONCRETE CURB
- 101 4" CONCRETE CURB
- 102 4" CONCRETE CURB
- 103 4" CONCRETE CURB
- 104 4" CONCRETE CURB
- 105 4" CONCRETE CURB
- 106 4" CONCRETE CURB
- 107 4" CONCRETE CURB
- 108 4" CONCRETE CURB
- 109 4" CONCRETE CURB
- 110 4" CONCRETE CURB
- 111 4" CONCRETE CURB
- 112 4" CONCRETE CURB
- 113 4" CONCRETE CURB
- 114 4" CONCRETE CURB
- 115 4" CONCRETE CURB
- 116 4" CONCRETE CURB
- 117 4" CONCRETE CURB
- 118 4" CONCRETE CURB
- 119 4" CONCRETE CURB
- 120 4" CONCRETE CURB
- 121 4" CONCRETE CURB
- 122 4" CONCRETE CURB
- 123 4" CONCRETE CURB
- 124 4" CONCRETE CURB
- 125 4" CONCRETE CURB
- 126 4" CONCRETE CURB
- 127 4" CONCRETE CURB
- 128 4" CONCRETE CURB
- 129 4" CONCRETE CURB
- 130 4" CONCRETE CURB
- 131 4" CONCRETE CURB
- 132 4" CONCRETE CURB
- 133 4" CONCRETE CURB
- 134 4" CONCRETE CURB
- 135 4" CONCRETE CURB
- 136 4" CONCRETE CURB
- 137 4" CONCRETE CURB
- 138 4" CONCRETE CURB
- 139 4" CONCRETE CURB
- 140 4" CONCRETE CURB
- 141 4" CONCRETE CURB
- 142 4" CONCRETE CURB
- 143 4" CONCRETE CURB
- 144 4" CONCRETE CURB
- 145 4" CONCRETE CURB
- 146 4" CONCRETE CURB
- 147 4" CONCRETE CURB
- 148 4" CONCRETE CURB
- 149 4" CONCRETE CURB
- 150 4" CONCRETE CURB
- 151 4" CONCRETE CURB
- 152 4" CONCRETE CURB
- 153 4" CONCRETE CURB
- 154 4" CONCRETE CURB
- 155 4" CONCRETE CURB
- 156 4" CONCRETE CURB
- 157 4" CONCRETE CURB
- 158 4" CONCRETE CURB
- 159 4" CONCRETE CURB
- 160 4" CONCRETE CURB
- 161 4" CONCRETE CURB
- 162 4" CONCRETE CURB
- 163 4" CONCRETE CURB
- 164 4" CONCRETE CURB
- 165 4" CONCRETE CURB
- 166 4" CONCRETE CURB
- 167 4" CONCRETE CURB
- 168 4" CONCRETE CURB
- 169 4" CONCRETE CURB
- 170 4" CONCRETE CURB
- 171 4" CONCRETE CURB
- 172 4" CONCRETE CURB
- 173 4" CONCRETE CURB
- 174 4" CONCRETE CURB
- 175 4" CONCRETE CURB
- 176 4" CONCRETE CURB
- 177 4" CONCRETE CURB
- 178 4" CONCRETE CURB
- 179 4" CONCRETE CURB
- 180 4" CONCRETE CURB
- 181 4" CONCRETE CURB
- 182 4" CONCRETE CURB
- 183 4" CONCRETE CURB
- 184 4" CONCRETE CURB
- 185 4" CONCRETE CURB
- 186 4" CONCRETE CURB
- 187 4" CONCRETE CURB
- 188 4" CONCRETE CURB
- 189 4" CONCRETE CURB
- 190 4" CONCRETE CURB
- 191 4" CONCRETE CURB
- 192 4" CONCRETE CURB
- 193 4" CONCRETE CURB
- 194 4" CONCRETE CURB
- 195 4" CONCRETE CURB
- 196 4" CONCRETE CURB
- 197 4" CONCRETE CURB
- 198 4" CONCRETE CURB
- 199 4" CONCRETE CURB
- 200 4" CONCRETE CURB



FOREST AVE

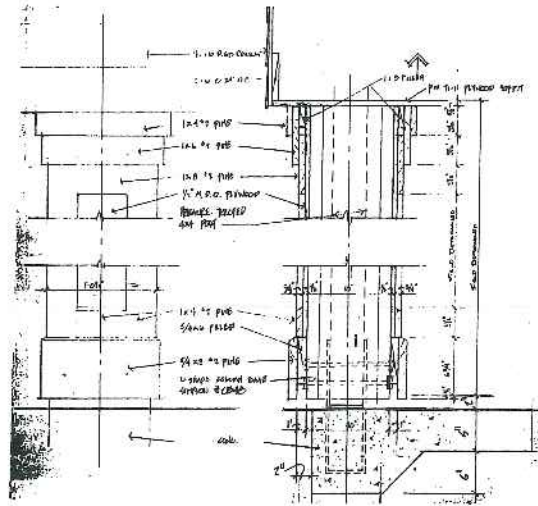
All utilities are shown in their approx location

GRAPHIC SCALE

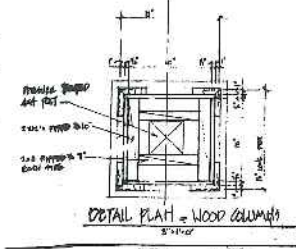
**BURGER KING CORPORATION**  
 RESTAURANT FOR...  
 JACK LEE MOYER  
 90 BOK AVENUE  
 GENERAL MAIL FACILITY  
 PORTLAND, ME 04102  
 PHONE 303 856 1978

**A-5779 N. 199 Co. Parking**  
 CIVIL ENGINEERING PLANS  
 FOREST AVE PLAZA  
 PORTLAND, ME  
 SCALE

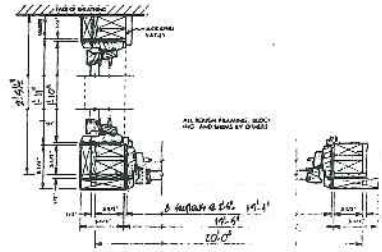




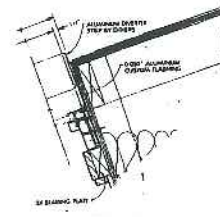
1  
A/G  
COLUMN DETAILS & ELEVATION  
N.T.S.



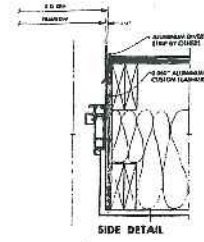
2  
A/G  
DETAIL (Plant & Col.)  
3/4\"/>



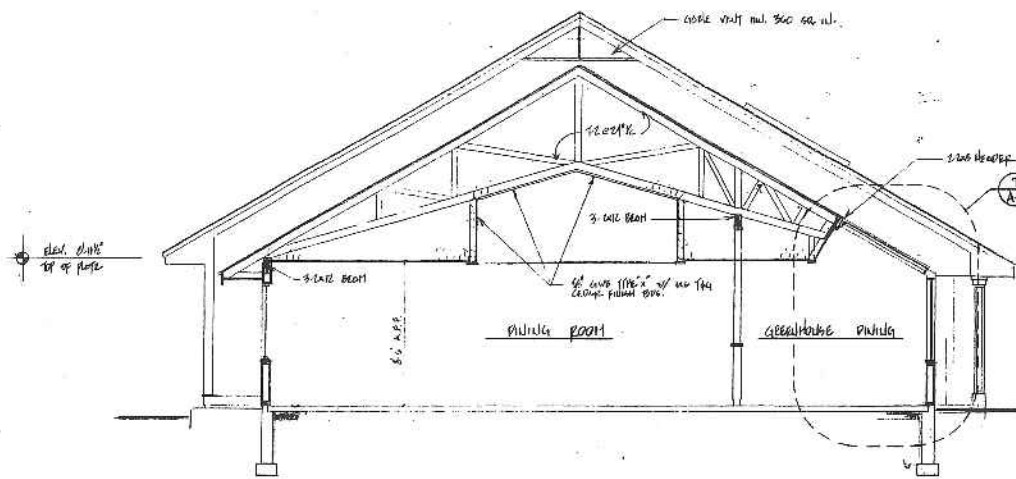
3  
A/G  
WINDOW SECTION DETAILS  
1/4\"/>



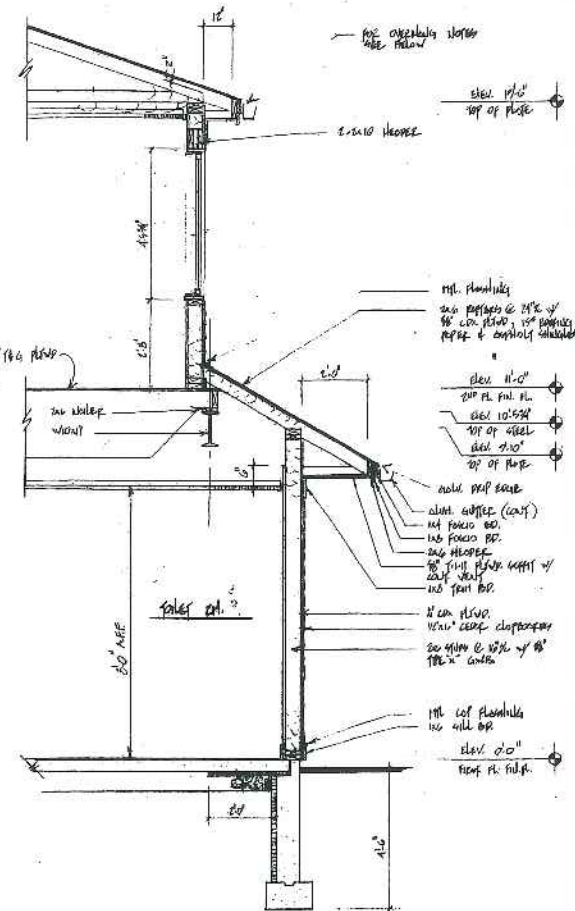
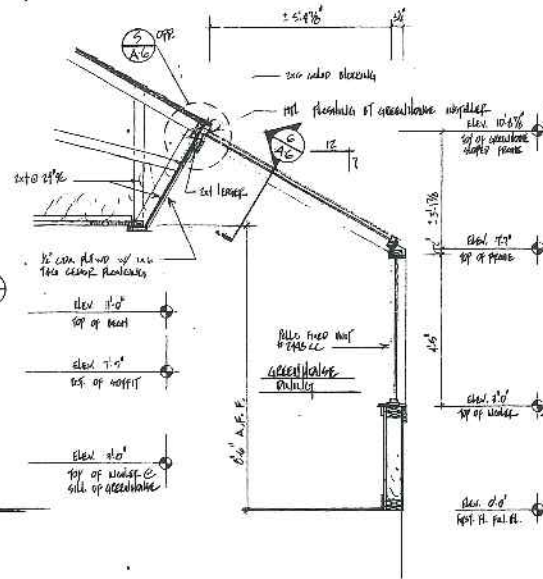
4  
A/G  
DETAIL



5  
A/G  
DETAIL



6  
A/G  
BUILDING SECTION  
1/4\"/>



NO.	DATE	REVISION	BY

DATE: 4-22-81

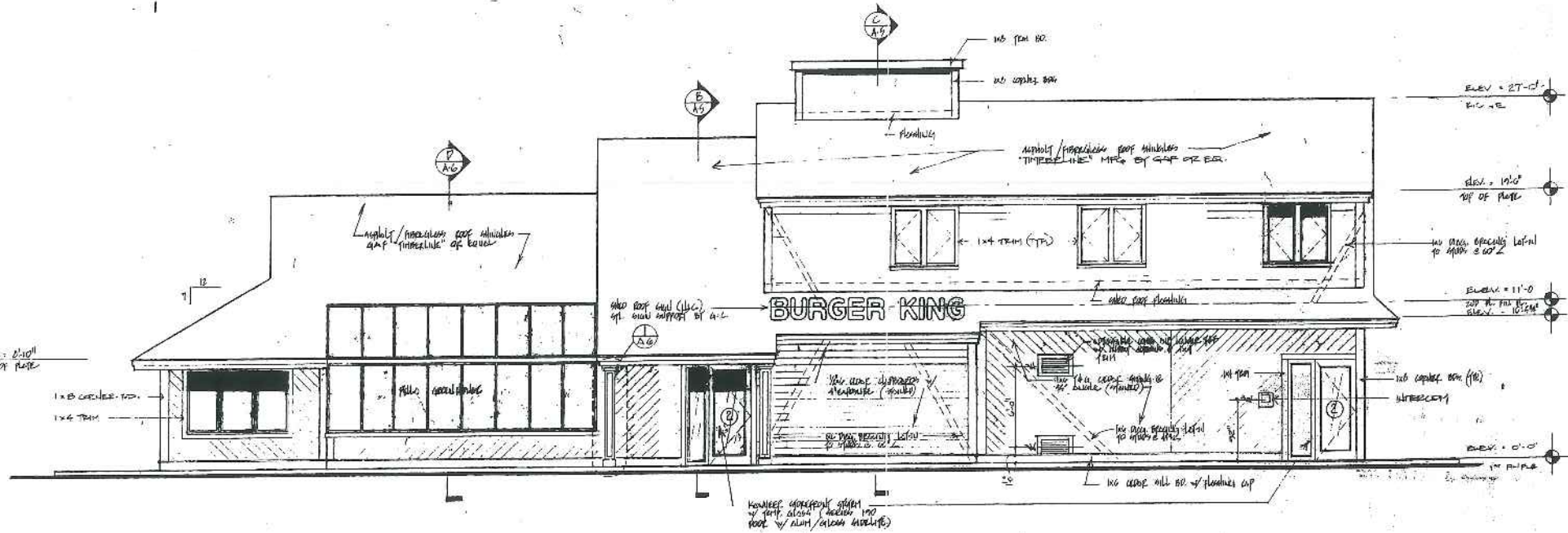
DRAWN BY: JHP

**MOESER & ASSOCIATES**  
308 GREEN FORD ROAD IN LITTLETON, MA 01860-0000  
**ARCHITECT**

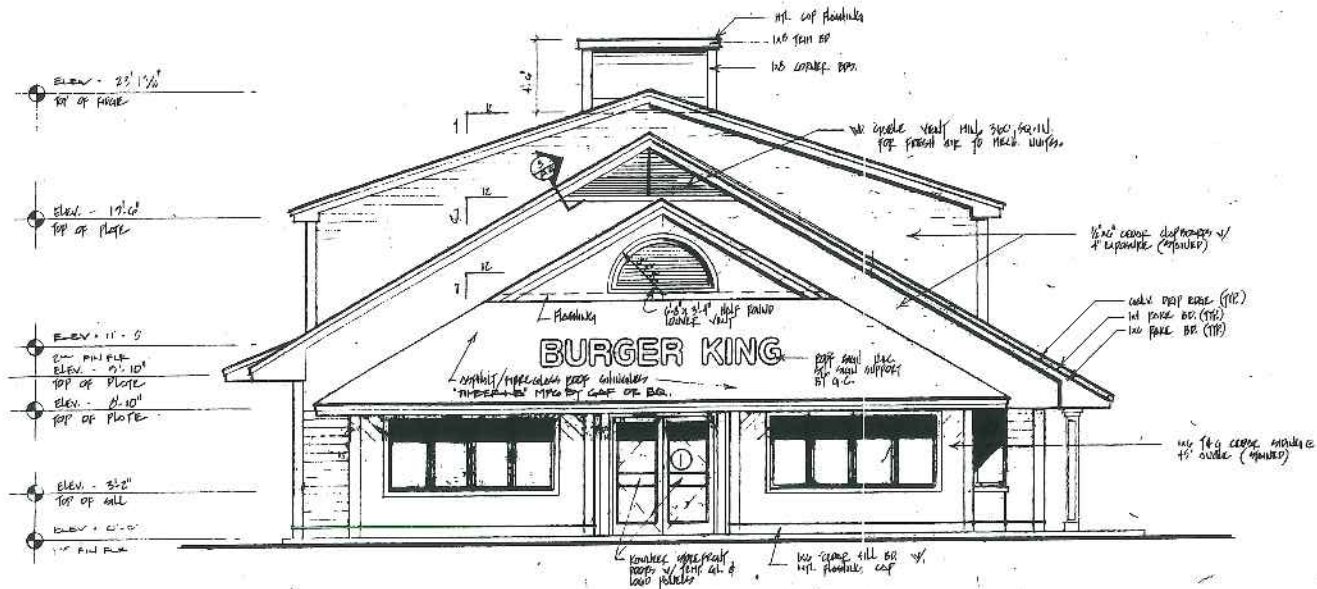
**PROPOSED RESTAURANT**  
**BURGER KING**  
**PORTLAND, MAINE**

STORE NO.  
5078  
A6772 N

DESCRIPTION  
BUILDING SECTION



**SOUTHWEST ELEVATION**  
SCALE: 3/4" = 1'-0"



**NOTE**  
OPTIONAL ALUM. LEADERS @ GUTTER  
DETERMINED BY OWNER. COLLECT  
ALL LEADERS TO ARCH SYSTEM 1/4" PVC

NO. DATE	REVISION	DATE

DRAWN BY: J. H. P.

---

**MOESER & ASSOCIATES**  
AN ARCHITECT FIRM INC. IN UTAH  
**ARCHITECT**

---

**PROPOSED RESTAURANT**  
PORTLAND, MAINE

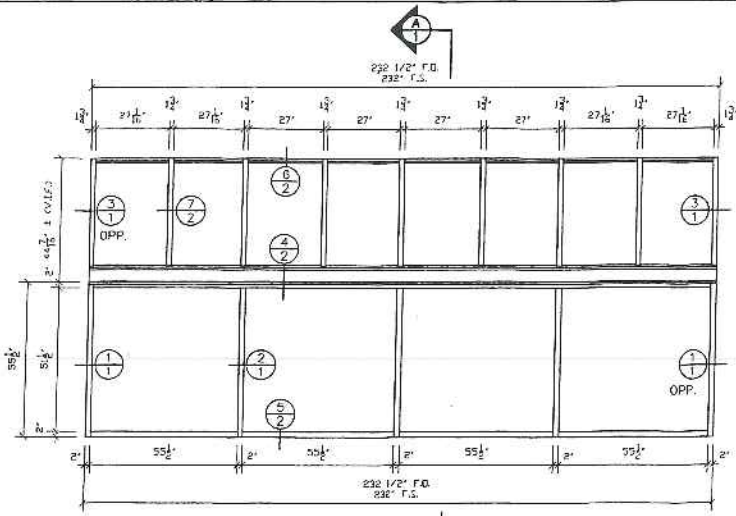
---

A 6772  
STORE NO.  
15678

---

LEVATIONS



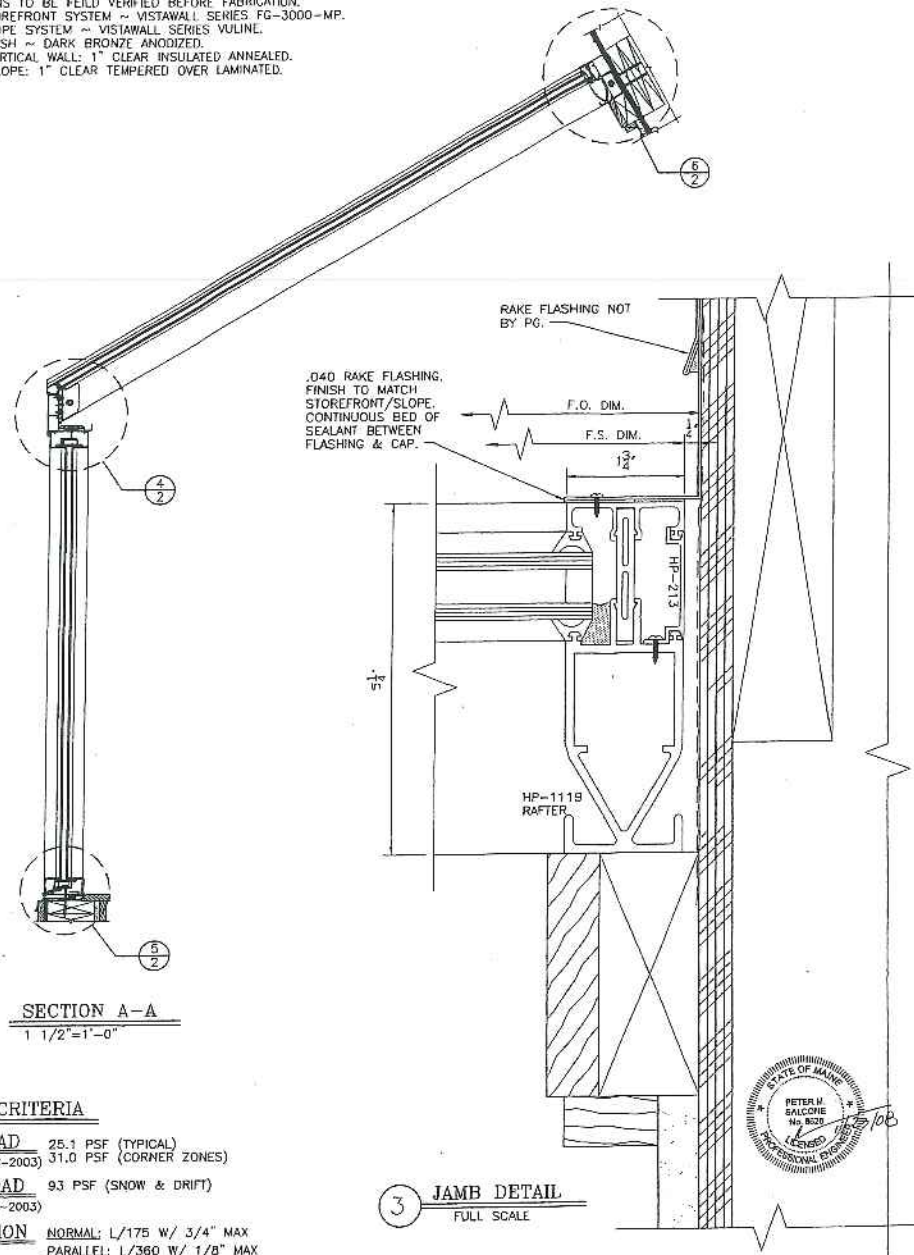


**GREENHOUSE ELEVATION**

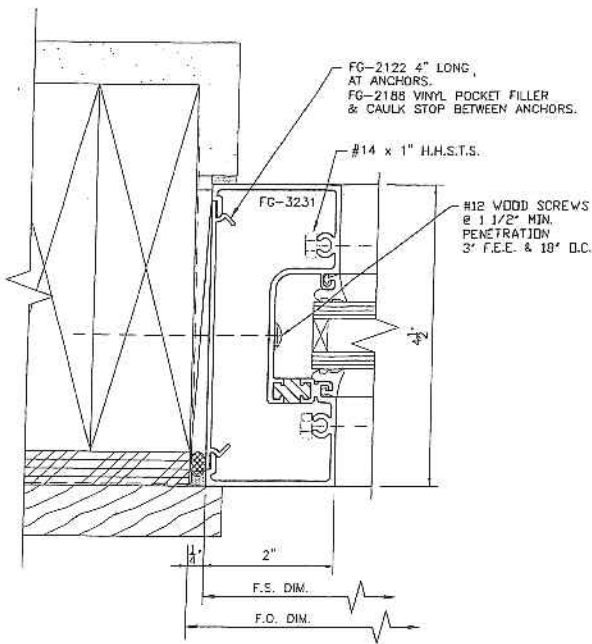
1/2" = 1'-0"  
1 ~ REQUIRED AS DRAWN.

**GENERAL NOTES:**

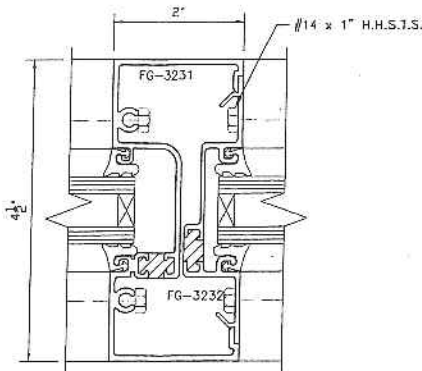
1. ALL DIMENSIONS TO BE FIELD VERIFIED BEFORE FABRICATION.
2. ALUMINUM STOREFRONT SYSTEM ~ VISTAWALL SERIES FG-3000-MP.
3. ALUMINUM SLOPE SYSTEM ~ VISTAWALL SERIES VULINL.
4. ALUMINUM FINISH ~ DARK BRONZE ANODIZED.
5. GLAZING ~ VERTICAL WALL: 1" CLEAR INSULATED ANNEALED.  
SLOPE: 1" CLEAR TEMPERED OVER LAMINATED.



**SECTION A-A**  
1/2" = 1'-0"



**1 JAMB DETAIL**  
FULL SCALE

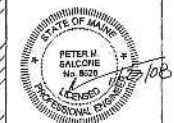


**2 VERT. MULL. DETAIL**  
FULL SCALE

**DESIGN CRITERIA**

- WIND LOAD** 25.1 PSF (TYPICAL)  
(ASCE7-02 & IBC-2003) 31.0 PSF (CORNER ZONES)
- SNOW LOAD** 93 PSF (SNOW & DRIFT)  
(ASCE7-02 & IBC-2003)
- DEFLECTION** NORMAL: L/175 W/ 3/4" MAX  
PARALLEL: L/360 W/ 1/8" MAX

**3 JAMB DETAIL**  
FULL SCALE



**PG Portland Glass.**  
A Glass Doctor Company

PG PORTLAND GLASS  
832 CONGRESS STREET  
PORTLAND, ME 04102  
PHONE: (207) 774-9851  
FAX: (207) 774-9855

JOB NAME: BURGER KING - PORTLAND, ME  
LAST REVISED: 1/16/08

**ABBREVIATIONS:**

M.O. - MASONRY OPENING	F.S. - FRAME SIZE
F.O. - FINISHED OPENING	W.S. - WINDOW SIZE
D.O. - DOOR OPENING	REQ'D - REQUIRED
S.O. - STIFF OPENING	C.F. - CLEAR

**SYMBOLS:**

	ELEVATION NUMBER
	SHEET NUMBER

**REVISIONS:**

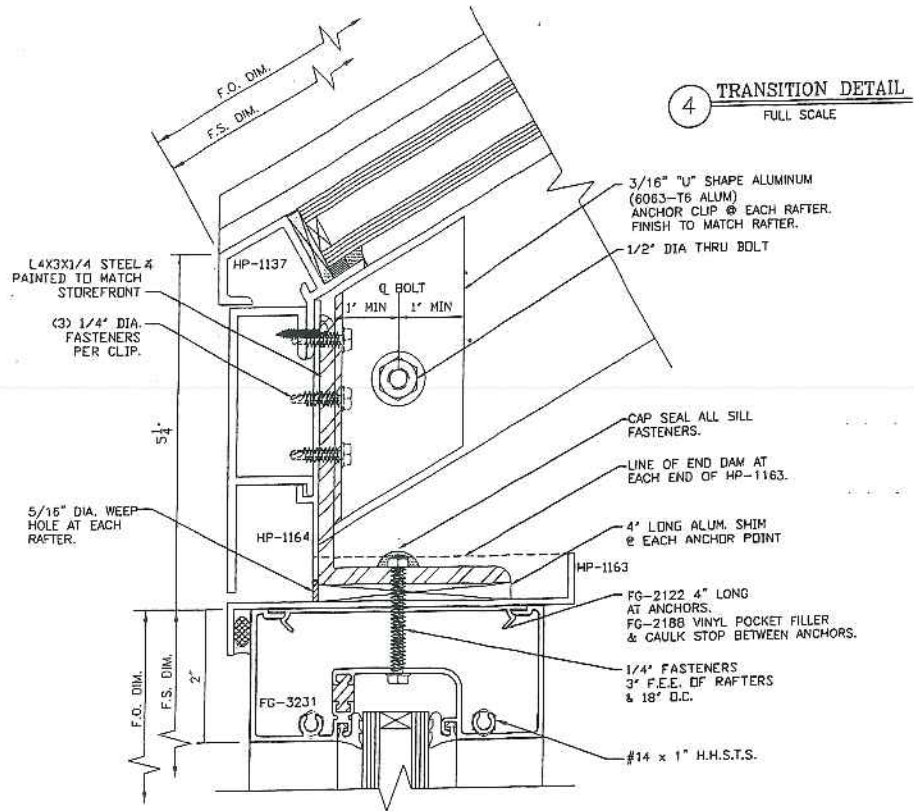
NO.	DATE	DESCRIPTION	NO.	DATE	DESCRIPTION

JOB NAME:	BURGER KING
	PORTLAND, ME
ARCHITECT:	MOESER & ASSOCIATES

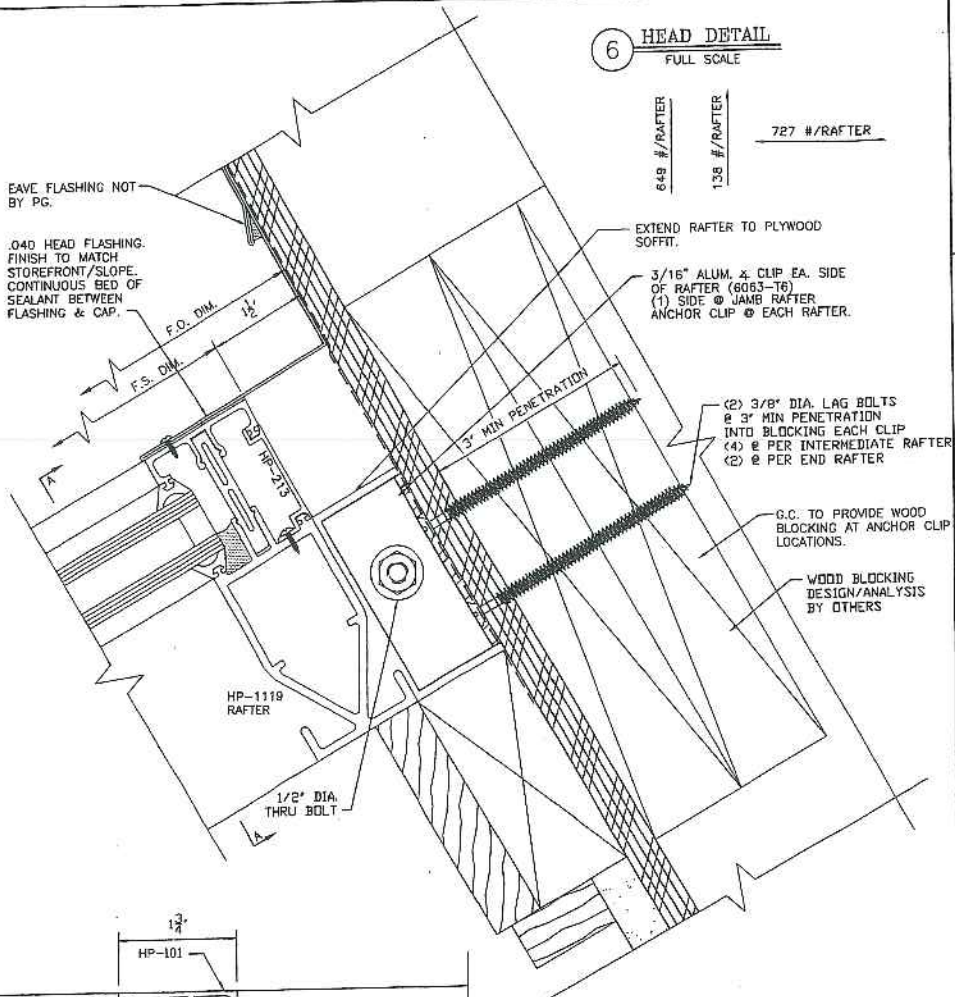
DATE:	11/16/07
SCALE:	AS NOTED

SHEET NUMBER	1 OF 2
--------------	--------



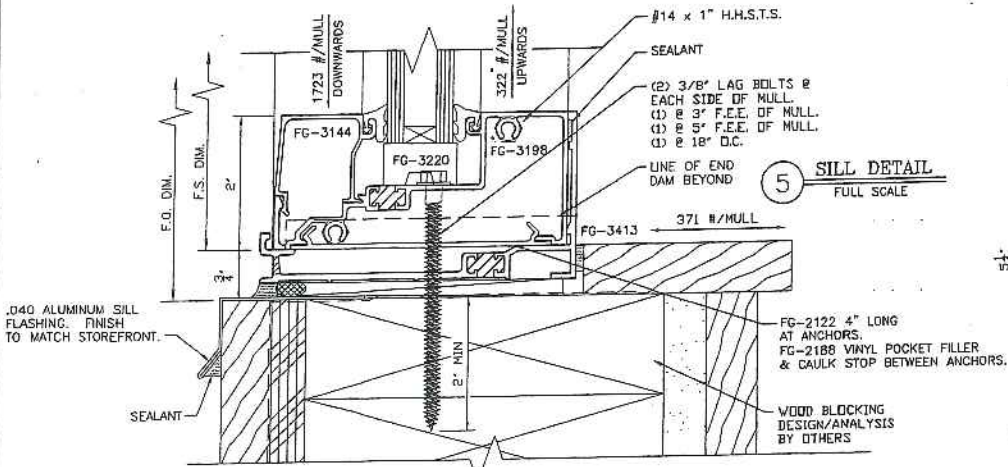


4 TRANSITION DETAIL  
FULL SCALE

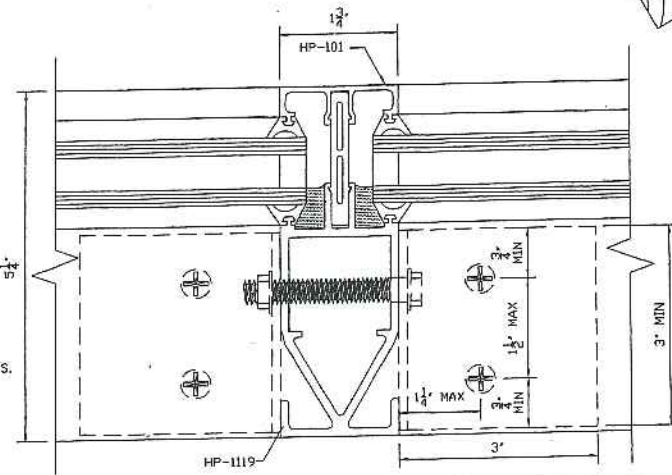


6 HEAD DETAIL  
FULL SCALE

649 #/RAFTER  
138 #/RAFTER  
727 #/RAFTER



5 SILL DETAIL  
FULL SCALE



7 RAFTER DETAIL A-A  
FULL SCALE

**PG Portland Glass.**  
A Glass Doctor Company

PG PORTLAND GLASS  
832 CONGRESS STREET  
PORTLAND, ME 04102  
PHONE: (207) 774-9851  
FAX: (207) 774-9855

LAST REVISED: 1/16/08

JOB NAME: BURGER KING - PORTLAND, ME

**ABBREVIATIONS:**

M.O. - MASONRY OPENING	F.S. - FRAME SIZE
F.O. - FINISHED OPENING	W.S. - WINDOW SIZE
D.O. - DOOR OPENING	REQ'D - REQUIRED
S.O. - STEEL OPENING	CLR. - CLEAR
A.F.F. - ABOVE FINISHED FLOOR	B.O.S. - BOTTOM OF STEEL
DIM. - DIMENSION	T.O.S. - TOP OF STEEL
CL - CENTER LINE	NTS - NOT TO SCALE

**SYMBOLS:**

	ELEVATION NUMBER
	SHEET NUMBER
	DETAIL NUMBER
	SHEET NUMBER

**REVISIONS:**

NO.	DATE	DESCRIPTION	NO.	DATE	DESCRIPTION

JOB NAME:	BURGER KING PORTLAND, ME	DATE:	11/15/07
ARCHITECT:	MOESER & ASSOCIATES	SCALE:	AS NOTED
CONTRACTOR:	MASTORAN CORPORATION	DRAWN BY:	R.L. HUNTLEY

SHEET NUMBER  
2 OF 2

