

PG PORTLAND GLASS
832 CONGRESS STREET
PORTLAND, ME 04102
PHONE: (207) 774-9851
FAX: (207) 774-9855

LAST REVISED: 1/16/08

PG Portland Glass

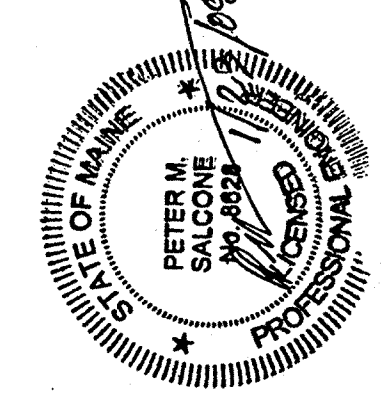
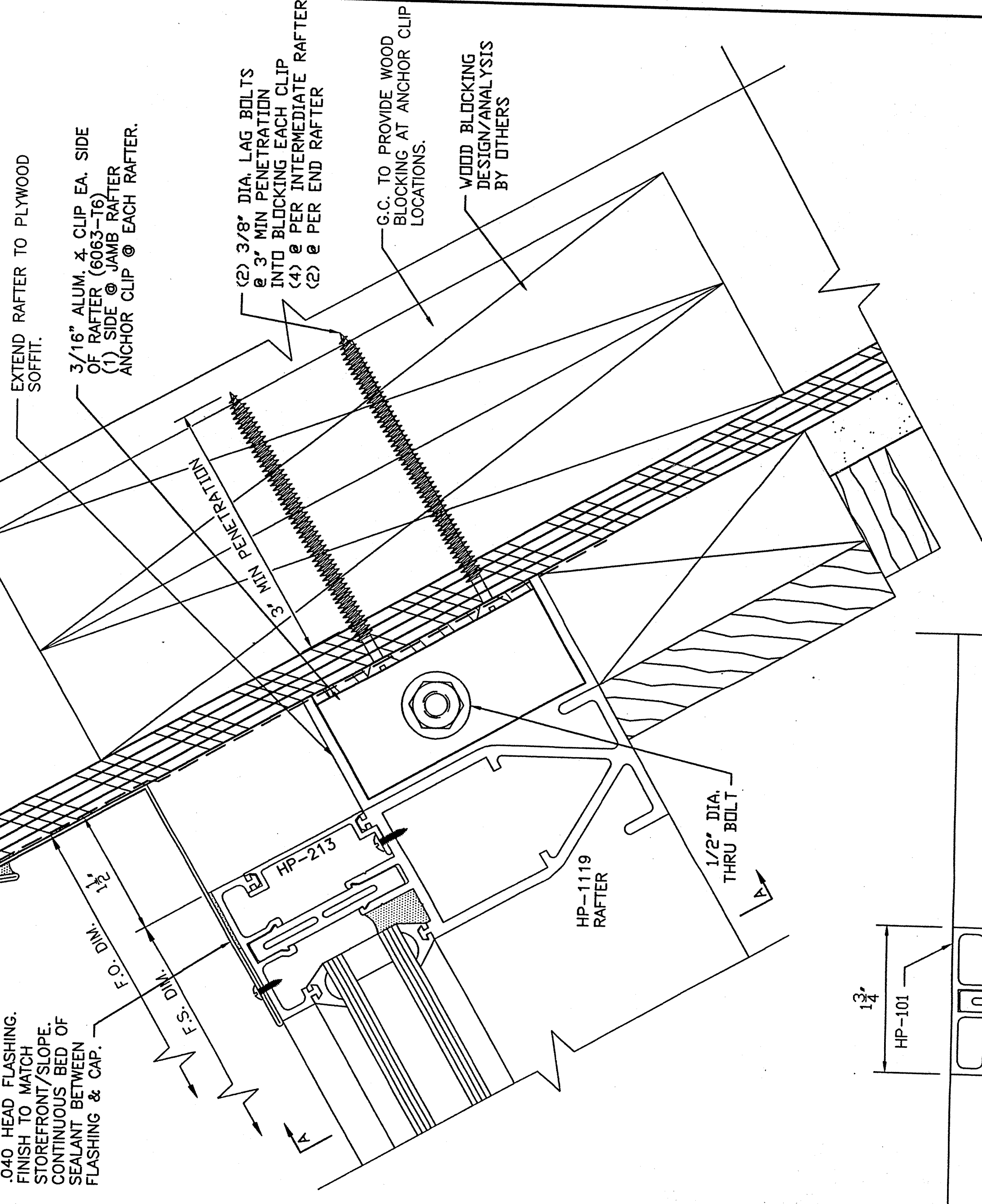
A Glass Doctor Company

JOB NAME: BURGER KING - PORTLAND, ME

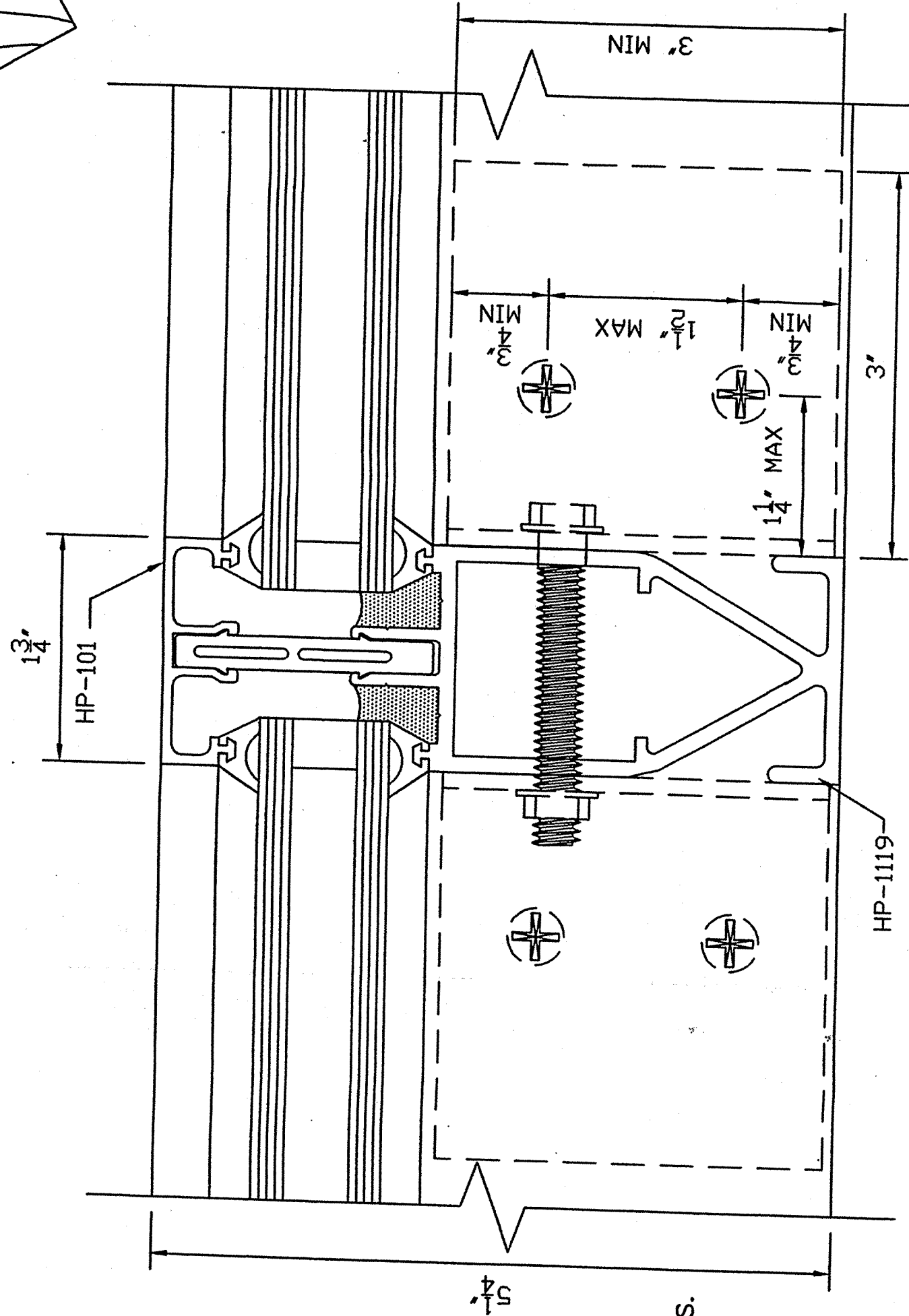
SHEET NUMBER
2 of 2

6 HEAD DETAIL
FULL SCALE

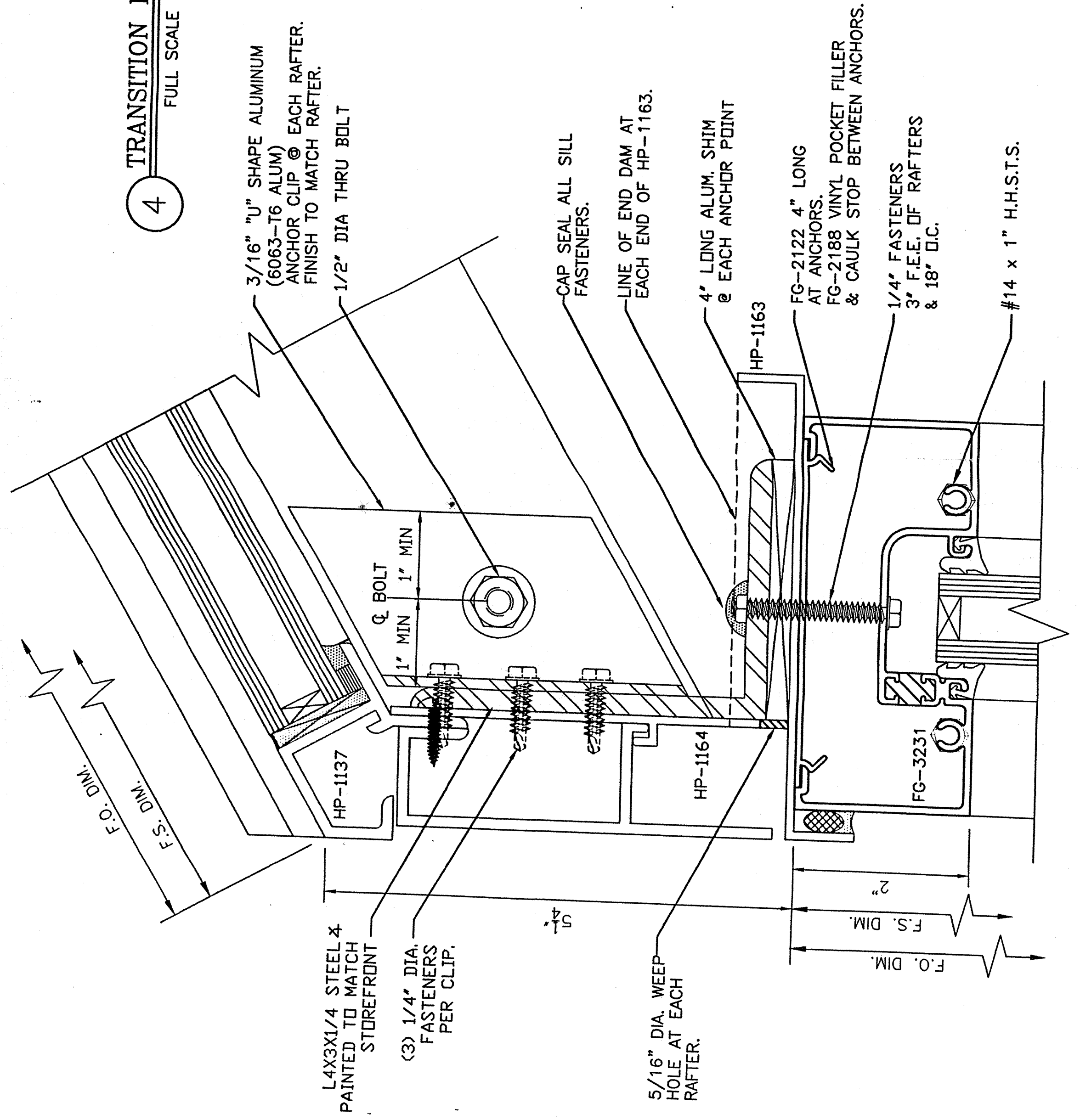
727 #/RAFTER
649 #/RAFTER
138 #/RAFTER



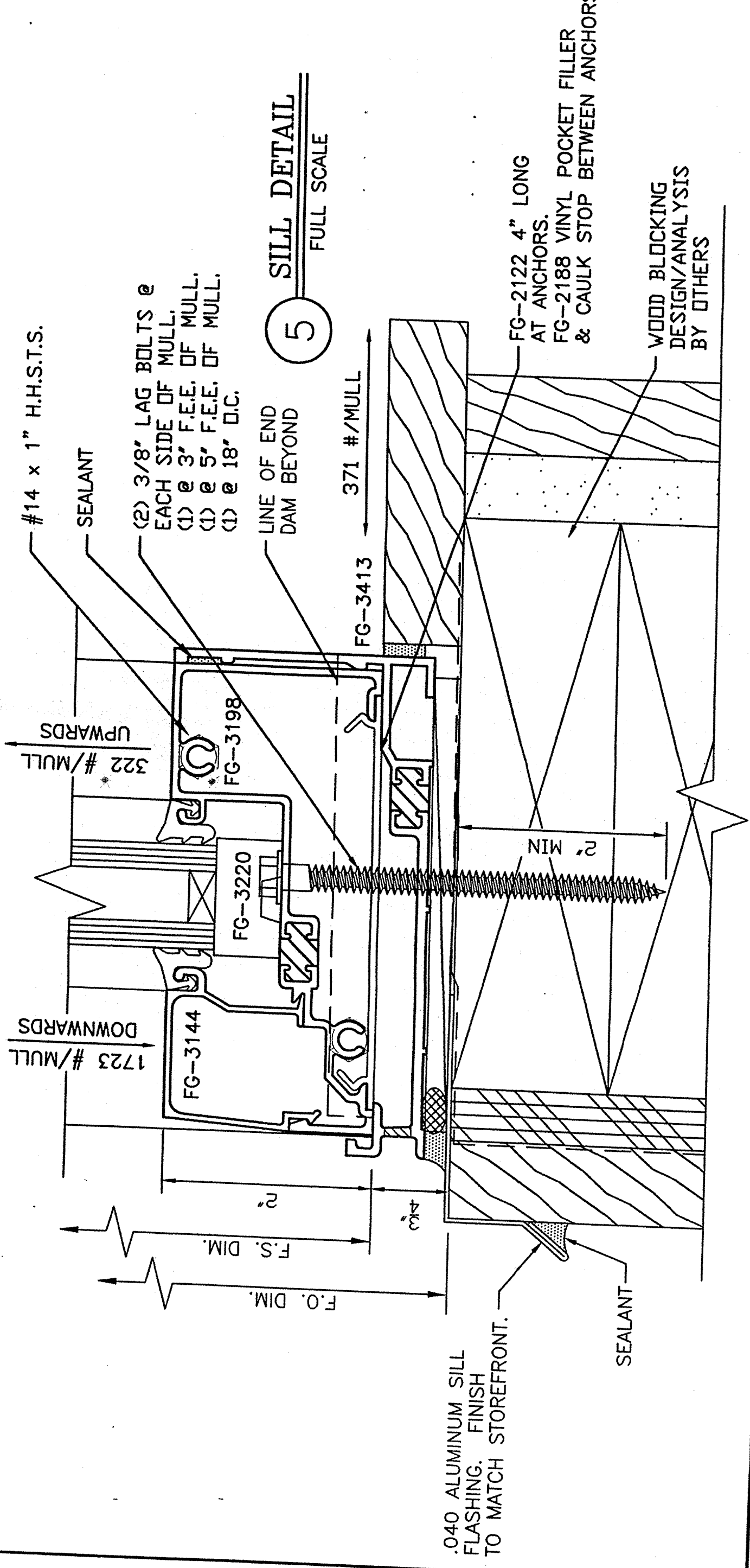
7 RAFTER DETAIL A-A
FULL SCALE



4 TRANSITION DETAIL
FULL SCALE



5 SILL DETAIL
FULL SCALE



ABBREVIATIONS:

- M.O. - MASONRY OPENING
- D.O. - FINISHED OPENING
- S.O. - STEEL OPENING
- A.F.F. - ABOVE FINISHED FLOOR
- DIM. - DIMENSION
- C- - CENTER LINE
- F.S. - FRAME SIZE
- W.S. - WINDOW SIZE
- REQ'D. - REQUIRED
- CLR. - CLEAR
- B.O.S. - BOTTOM OF STEEL
- T.O.S. - TOP OF STEEL
- NIS - NOT TO SCALE

SYMBOLS:

- ELEVATION NUMBER
- SHEET NUMBER
- DETAIL NUMBER
- SHEET NUMBER

REVISIONS:

NO.	DATE	DESCRIPTION
1		
2		
3		
4		
5		

JOB NAME: BURGER KING
PORTLAND, ME
ARCHITECT: MOESER & ASSOCIATES
CONTRACTOR: MASTORAN CORPORATION

DATE: 11/15/07
SCALE: AS NOTED
DRAWN BY: R.L. HUNTLEY