



System No. BW-S-0001 XHBN.BW-S-0001 Joint Systems

Page Bottom

Design/System/Construction/Assembly Usage Disclaimer

- Authorities Having Jurisdiction should be consulted in all cases as to the particular requirements covering the installation and use of UL Listed or Classified products, equipment, system, devices, and materials.
Authorities Having Jurisdiction should be consulted before construction.
Fire resistance assemblies and products are developed by the design submitter and have been investigated by UL for compliance with applicable requirements. The published information cannot always address every construction nuance encountered in the field.
When field issues arise, it is recommended the first contact for assistance be the technical service staff provided by the product manufacturer noted for the design. Users of fire resistance assemblies are advised to consult the general Guide Information for each product category and each group of assemblies. The Guide Information includes specifics concerning alternate materials and alternate methods of construction.
Only products which bear UL's Mark are considered as Classified, Listed, or Recognized.

Joint Systems

See General Information for Joint Systems

System No. BW-S-0001

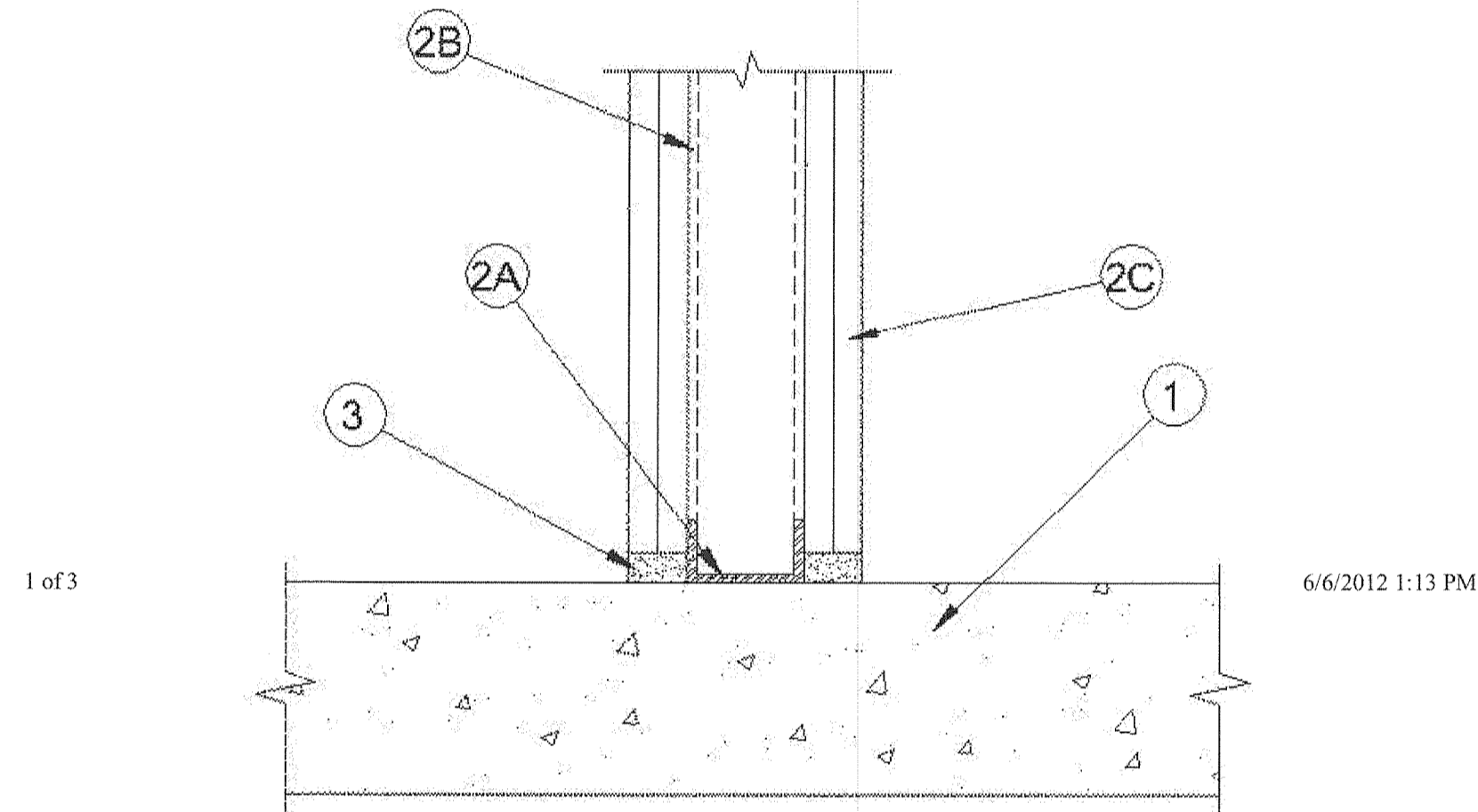
June 12, 2003

Assembly Ratings - 1 and 2 Hr (See Item 2)

L Rating at Ambient - Less than 1 CFM/Lin Ft

L Rating at 400° F - Less than 1 CFM/Lin Ft

Joint Width - 3/4 In. Max



1 of 3

6/6/2012 1:13 PM

- 1. Floor Assembly - Min 4-1/2 in. thick reinforced lightweight or normal weight (100-150 pcf) structural concrete. Floor may also be constructed of any 6 in. thick UL Classified hollow-core Precast Concrete Units*.
2. Wall Assembly - The 1 or 2 hr fire-rated gypsum board/steel stud wall assembly shall be constructed of the materials and in the manner specified in the individual U400 or V400 Series Wall or Partition Design in the UL Fire Resistance Directory.
3. Fill, Void or Cavity Material* Sealant - Max separation between top of floor and bottom of gypsum board is 3/4 in.

HILTI CONSTRUCTION CHEMICALS, DIV OF HILTI INC - CP601S Elastomeric Firestop Sealant, CP606 Flexible Firestop Sealant or FS-ONE Sealant

*Bearing the UL Classification Mark

Last Updated on 2003-06-12

The appearance of a company's name or product in this database does not in itself assure that products so identified have been manufactured under UL's Follow-Up Service. Only those products bearing the UL Mark should be considered to be listed and covered under UL's Follow-Up Service. Always look for the Mark on the product.

UL permits the reproduction of the material contained in the Online Certification Directory subject to the following conditions: 1. The Guide Information, Designs and/or Listings (RIS) must be presented in their entirety and in a non-misleading manner, without any manipulation of drawings. 2. The statement 'Reprinted from the Online Certifications Directory with permission from UL' must appear adjacent to the extracted material. In addition, the reprinted material must include a copyright notice in the following format: '© 2012 UL LLC'.



System No. HW-D-1066 XHBN.HW-D-1066 Joint Systems

Page Bottom

Design/System/Construction/Assembly Usage Disclaimer

- Authorities Having Jurisdiction should be consulted in all cases as to the particular requirements covering the installation and use of UL Certified products, equipment, system, devices, and materials.
Authorities Having Jurisdiction should be consulted before construction.
Fire resistance assemblies and products are developed by the design submitter and have been investigated by UL for compliance with applicable requirements. The published information cannot always address every construction nuance encountered in the field.
When field issues arise, it is recommended the first contact for assistance be the technical service staff provided by the product manufacturer noted for the design. Users of fire resistance assemblies are advised to consult the general Guide Information for each product category and each group of assemblies. The Guide Information includes specifics concerning alternate materials and alternate methods of construction.
Only products which bear UL's Mark are considered Certified.

Joint Systems

See General Information for Joint Systems

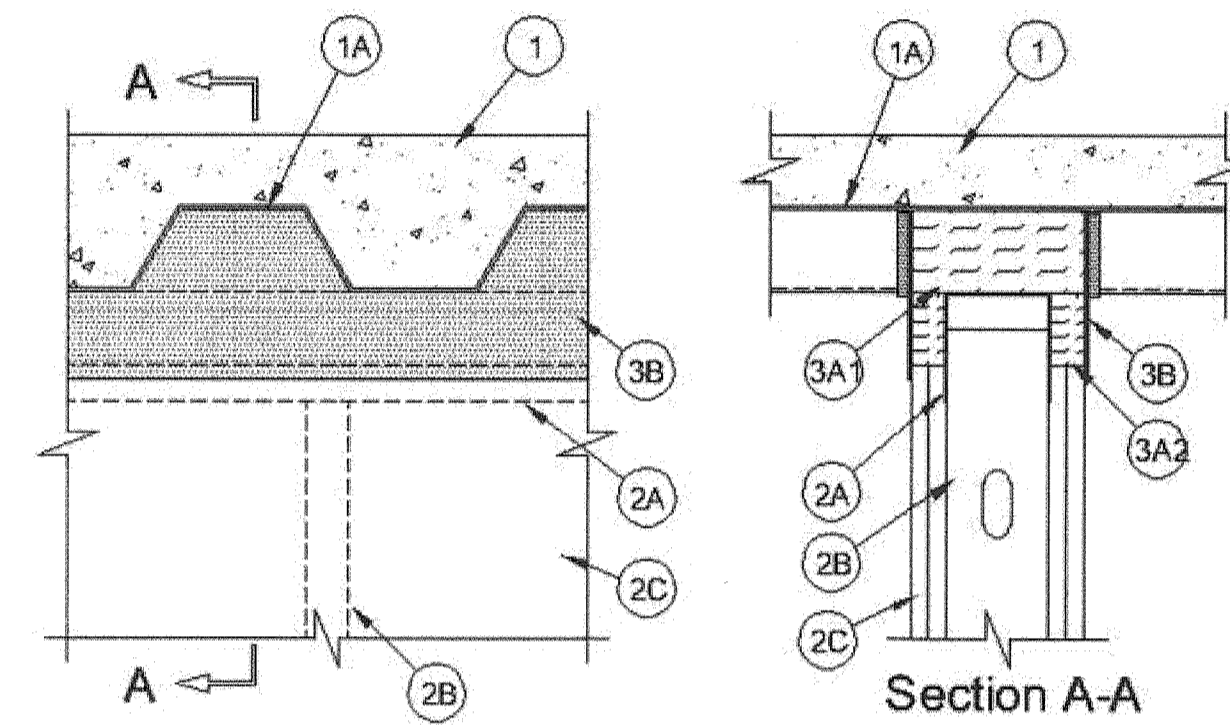
System No. HW-D-1066

June 28, 2011

Assembly Ratings - 1 And 2 Hr (See Item 2)

Nominal Joint Width - 2 - 1/2 In.

Class II Movement Capabilities - 40% Compression Or Extension (See Items 2A and 2A1)



1 of 3

5/8/2014 2:23 PM

1. Floor Assembly - The fire rated fluted steel deck/concrete floor assembly shall be constructed of the materials and in the manner described in the individual D900 Series Floor-Ceiling Design in the UL Fire Resistance Directory and shall include the following construction features:

- A. Steel Floor and Form Units* - Max 3 in. (76 mm) deep galv steel fluted floor units.
B. Concrete - Min 2-1/2 in. (64 mm) thick reinforced concrete, as measured from the top plane of the floor units.
1A. Roof Assembly - (Not Shown) - As an alternate to the floor assembly, a fire rated fluted steel deck roof assembly may be used.
A. Steel Roof Deck - Max 3 in. (76 mm) deep galv steel fluted roof deck.
B. Roof Insulation - Min 2-1/4 in. (57 mm) thick poured insulating concrete, as measured from the top plane of the steel roof deck.
2. Wall Assembly - The 1 hr or 2 hr fire rated gypsum board/steel stud wall assembly shall be constructed of the materials and in the manner described in the individual U400 or V400 Series Wall and Partition Design in the UL Fire Resistance Directory and shall include the following construction features:

- A. Steel Floor and Ceiling Runners - Floor and ceiling runners of wall assembly shall consist of galv steel channels sized to accommodate steel studs (Item 2B).
A1. Light Gauge Framing* - Slotted Ceiling Runner - As an alternate to the ceiling runner in Item 2A, slotted ceiling runner to consist of galv steel channel with 3-1/4 in. (83 mm) high slotted flanges sized to accommodate steel studs (Item 2B).
BRADY CONSTRUCTION INNOVATIONS INC, DBA SLIPTRACK SYSTEMS - SLIPTRK325

- B. Studs - Steel studs to be min 3-1/2 in. (89 mm) wide. Studs cut 1-1/4 in. to 1-1/2 in. (32 to 38 mm) less in length than assembly height with bottom resting in and resting on floor runner and with top nesting in ceiling runner without attachment. Stud spacing not to exceed 24 in. (610 mm) OC.

- C. Gypsum Board* - Gypsum board installed to a min total thickness of 5/8 in. (16 mm) or 1-1/4 in. (32 mm) on each side of wall for 1 hr and 2 hr rated assemblies, respectively.
The hourly rating of the joint system is dependent on the hourly rating of the wall.
3. Joint System - Max separation between bottom plane of floor or roof and top of gypsum board at time of installation of joint system is 2-1/2 in. (64 mm). The joint system is designed to accommodate a max. 40 compression or extension from its installed width. The joint system consists of forming material and a fill material as follows:

- A. Forming Material* - Nom 5 in. (127 mm) thick pieces of nom 4 pcf (64 kg/m³) forming material sized to attain a min compression rate of 50 percent in the thickness direction firmly packed to completely fill the flutes.
ROCK WOOL MANUFACTURING CO - Deba Board

- ROXUL INC - SAFE
THERMAFIBER INC - Type SAF

- A1. Forming Material* - Plugs - As an alternate to Item 3A, preformed mineral wool plugs, formed to the shape of the fluted floor units, friction fit to completely fill the flutes above the ceiling runner. The plugs shall project beyond each side of the ceiling runner, flush with wall surfaces.

2 of 3

5/8/2014 2:23 PM

Additional forming material, described in Item 3A2, to be used in conjunction with the plugs to fill the gap between the top of gypsum board and the bottom of plug.
HILTI CONSTRUCTION CHEMICALS, DIV OF HILTI INC - CP777 Speed Plugs
A2. Forming Material* - Strips - Nom 5/8 in. (16 mm) and 1-1/4 in. (32 mm) wide by 5 in. (127 mm) thick pre-cut mineral wool strips for 1 and 2 hr rated assemblies, respectively. The strips are compressed 50 percent in thickness and firmly packed into the gap between the top of the gypsum board and bottom of the steel floor or roof deck on both sides of the wall.
HILTI CONSTRUCTION CHEMICALS, DIV OF HILTI INC - CP 767 Speed Strips

*Bearing the UL Classification Mark

Last Updated on 2011-06-28

Questions? Print this page Terms of Use Page Top

© 2014 UL LLC

When the UL Leaf Mark is on the product, or when the word "Environment" is included in the UL Mark, please search the UL Environment database for additional information regarding this product's certification.

The appearance of a company's name or product in this database does not in itself assure that products so identified have been manufactured under UL's Follow-Up Service. Only those products bearing the UL Mark should be considered to be Certified and covered under UL's Follow-Up Service. Always look for the Mark on the product.

UL permits the reproduction of the material contained in the Online Certification Directory subject to the following conditions: 1. The Guide Information, Assemblies, Constructions, Designs, Systems, and/or Certifications (RIS) must be presented in their entirety and in a non-misleading manner, without any manipulation of the data (or drawings). 2. The statement 'Reprinted from the Online Certifications Directory with permission from UL' must appear adjacent to the extracted material. In addition, the reprinted material must include a copyright notice in the following format: '© 2014 UL LLC'.

NOTE: THESE DETAILS ARE INCLUDED FOR REFERENCE PURPOSES AND DO NOT INCLUDE ALL APPLICABLE UL SYSTEM TESTED DETAILING TO BE UTILIZED THROUGH OUT THE PROJECT. PROVIDE APPLICABLE UL SYSTEM TESTED DETAILING FOR ALL FIRE RATED AND SMOKE PARTITION CONDITIONS/PENETRATIONS, WHETHER INDICATED WITHIN THESE DRAWINGS OR NOT.

CWS ARCHITECTS ARCHITECTURE | INTERIOR DESIGN
434 Cumberland Avenue Portland ME 04101 OFFICE: 207.774.4441 CWSARCH.COM
DESIGNER: GUY T. LABRECQUE, JR. LICENSED ARCHITECT STATE OF MAINE
OWNER: AARON'S FIT-UP STORE #: F0810 309 EAST PACES FERRY ROAD ATLANTA, GEORGIA 30305 PHONE: (678) 402-3000
PROJECT: AARON'S FIT-UP STORE #: F0810
DRAWING: U.L. DESIGN DETAILS
REVISIONS:
DRAWING NUMBER: LS1.20
SCALE: N/A DATE: 01/08/2016
ISSUED FOR CONSTRUCTION