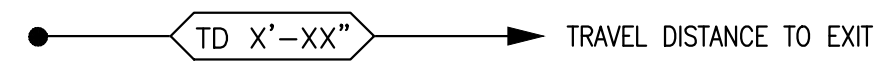


TRAVEL DISTANCES:



PROPOSED USE:

IBC 2009:
USE GROUP M - MERCANTILE

NFPA 101 (2009):
EXISTING MERCANTILE OCCUPANCIES

OVERALL TENANT SPACE AREA:
APPROXIMATELY 5,730 SF

FIRE SUPPRESSION:

FIRE SUPPRESSION SPRINKLER SYSTEM LAYOUT TO BE CONFIGURED TO ACCOMMODATE SPACE LAYOUT AS REQUIRED.

FIRE PARTITIONS:

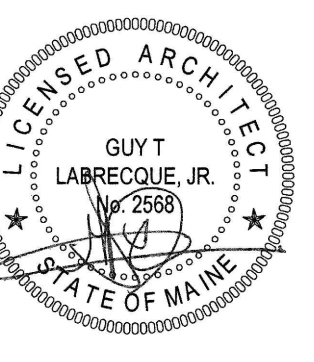
1 HOUR FIRE RATED 1HR-FP

SYMBOLS LEGEND:

- EXIT SIGN - ARROW DENOTES EXIT SIGN TO BE PROVIDED WITH DIRECTIONAL ARROW
- WALL MOUNTED FIRE EXTINGUISHER
- SMOKE DETECTOR
- PULL STATION
- HORN/STROBE DEVICE W/ CANDELLA RATING
- STROBE DEVICE W/ CANDELLA RATING
- FIRE ALARM CONTROL PANEL

CWS ARCHITECTS
ARCHITECTURE | INTERIOR DESIGN

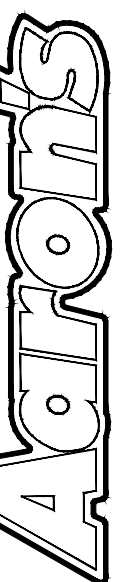
434 Cumberland Avenue Portland ME 04101
OFFICE: 207.774.4441 CWSARCH.COM



DESIGNER

CWS ARCHITECTS
ARCHITECTURE | INTERIOR DESIGN
434 CUMBERLAND AVENUE
PORTLAND, MAINE 04101
T: 207.774.4441
F: 207.774.4016
WWW.CWSARCH.COM

OWNER



309 EAST PACES FERRY ROAD
ATLANTA, GEORGIA 30305
PHONE: (678) 402-3000

PROJECT

AARON'S FIT-UP
STORE #: F0810

449 FOREST AVE.
PORTLAND, MAINE 04101

DRAWING

LIFE SAFETY PLAN

CWS PROJECT NUMBER: 15076

REVISIONS

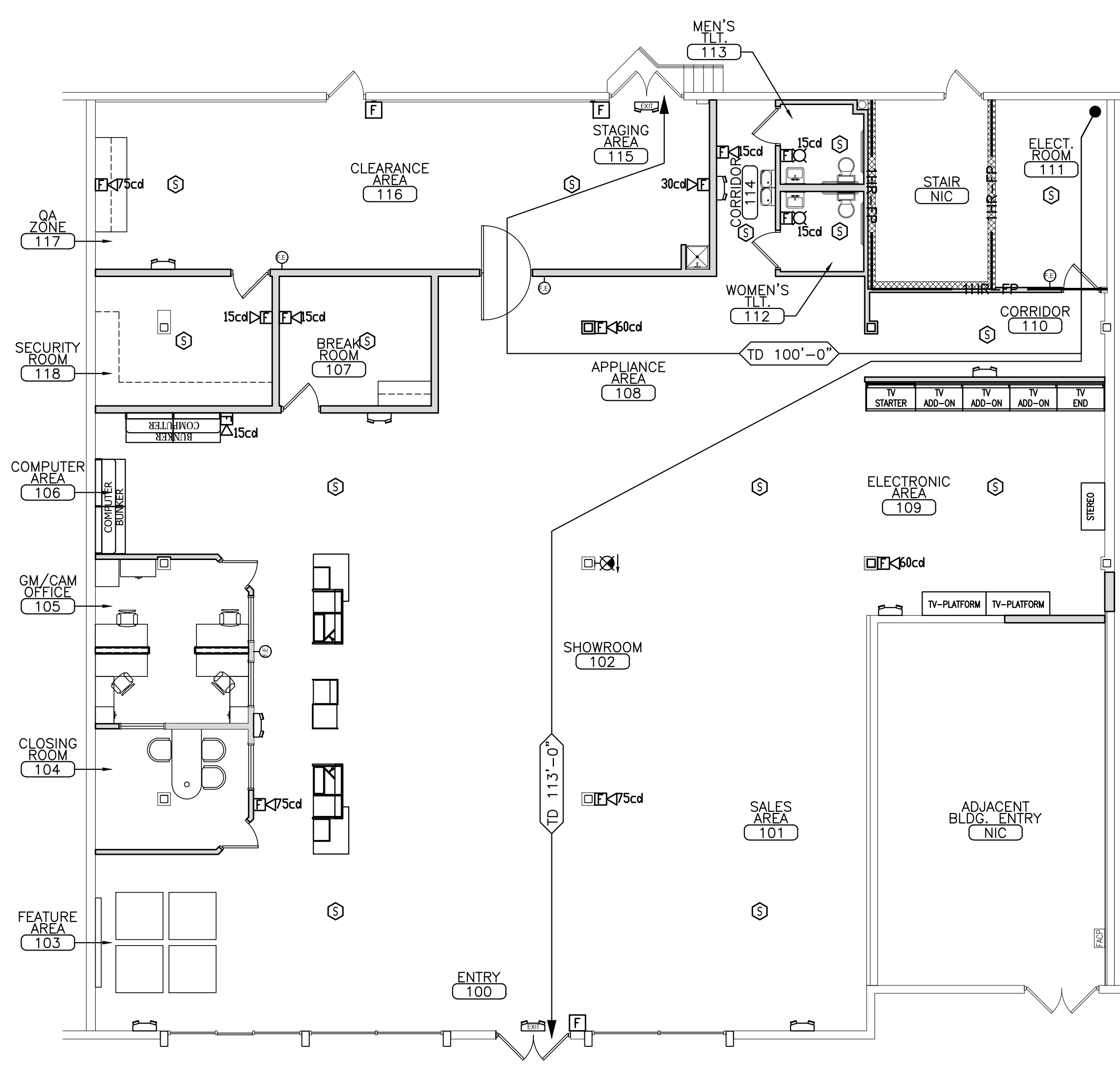
NO.	DESCRIPTION	DATE

DRAWING NUMBER

LS1.10

SCALE: 1/8" = 1'-0"

DATE: 01/08/2016



A5 LIFE SAFETY PLAN

REFERENCED FROM: SCALE: 1/8" = 1'-0"

NOTE: THESE DRAWINGS HAVE BEEN UPDATED TO THE CURRENT SPECIFICATIONS FOR AN AARON'S SALES AND LEASE OWNERSHIP STORE. DEVIATION FROM THESE PLANS IS NOT PERMITTED WITHOUT EXPRESS WRITTEN PERMISSION.

ISSUED FOR CONSTRUCTION