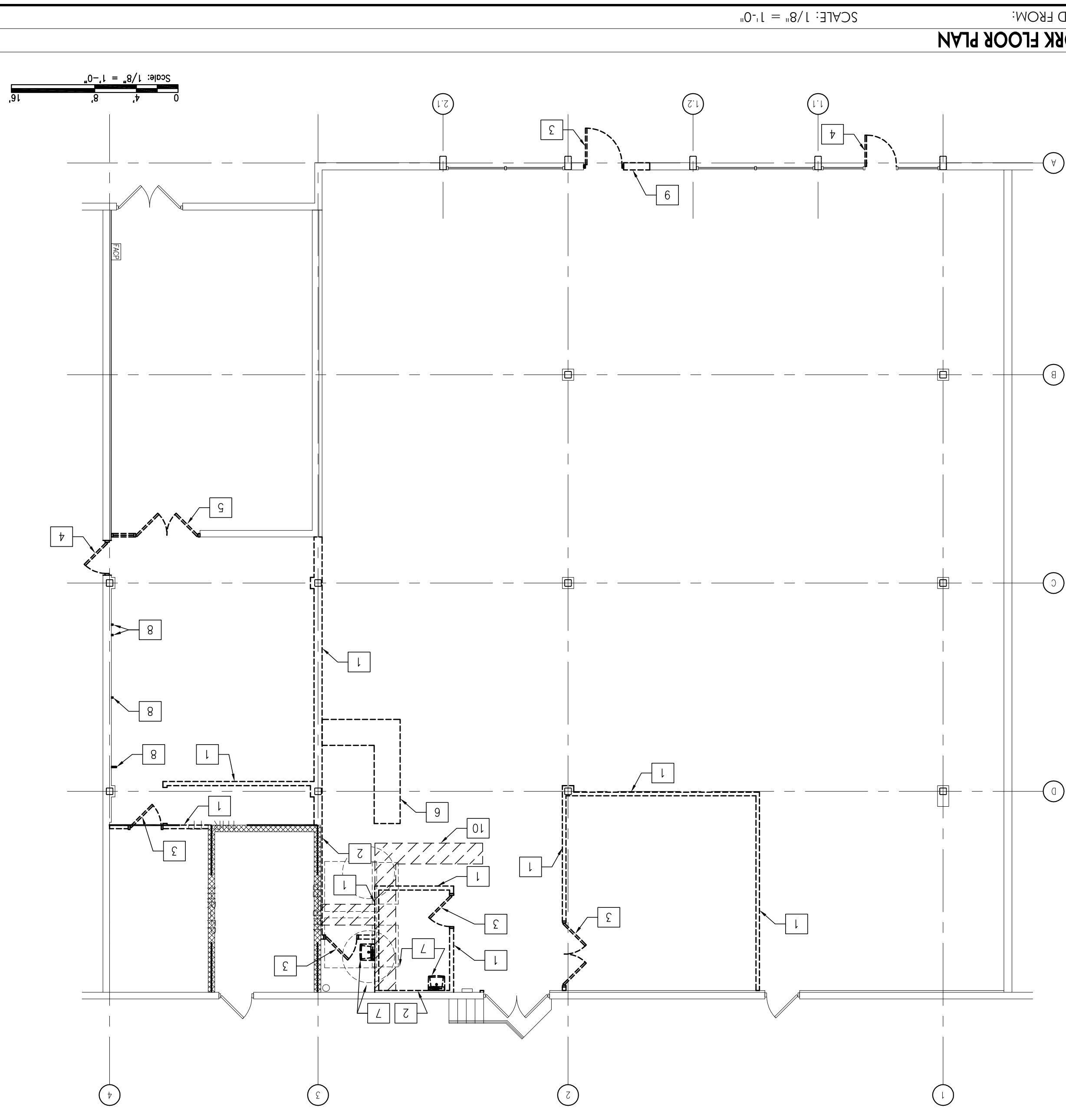


NOTE: THESE DRAWINGS HAVE BEEN UPDATED TO THE CURRENT SPECIFICATIONS FOR AN AARON'S SALES AND LEASE OWNERSHIP STORE. DEVIATION FROM THESE PLANS IS NOT PERMITTED WITHOUT EXPRESS WRITTEN PERMISSION.



- 1 REMOVE GWB WALL ASSEMBLY, FULL HEIGHT TO EXTENTS INDICATED.
- 2 REMOVE PORTION OF GWB WALL ASSEMBLY AS INDICATED.
- 3 REMOVE DOOR AND FRAME ASSEMBLY, COMPLETE.
- 4 REMOVE DOOR HARDWARE AND SECURELY FASTEN DOOR IN A PERMANENTLY CLOSED POSITION.
- 5 REMOVE ALUMINUM DOOR, FRAME AND SIDELIGHT ASSEMBLY, COMPLETE. PREPARE OPENING FOR INFILL.
- 6 REMOVE CABINET AND COUNTERTOP ASSEMBLY, COMPLETE.
- 7 REMOVE PLUMBING FIXTURE, CAP PIPING WITHIN WALL/FLOOR AS REQUIRED.
- 8 CAP PIPING WITHIN WALL AS REQUIRED.
- 9 REFERENCE NEW WORK FLOOR PLAN FOR MORE INFORMATION.
- 10 REMOVE PORTION OF CONCRETE SLAB AS REQUIRED TO ALLOW NEW PLUMBING EXTENTS OF WORK. EXTENTS OF REQUIRED REMOVALS MAY VARY FROM INDICATED - COORDINATE EXTENTS OF REMOVALS WITH NEW FIXTURES AND PIPING LOCATIONS.

REVISIONS

NO.	DATE	DESCRIPTION

DRAWING

REMOVALS FLOOR PLAN AND NOTES
CWS PROJECT NUMBER: 15076

PROJECT

AARON'S FIT-UP STORE # : F0810
449 FOREST AVE.
PORTLAND, MAINE 04101

OWNER

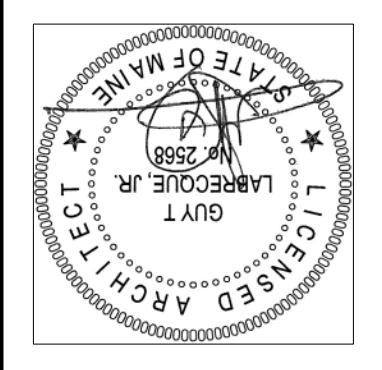
AARON'S

309 EAST PACES FERRY ROAD
ATLANTA, GEORGIA 30305
PHONE: (678) 402-3000

DESIGNER

CWS ARCHITECTS
ARCHITECTURE | INTERIOR DESIGN

434 CUMBERLAND AVENUE
PORTLAND, ME 04101
PHONE: 207.774.4441
WWW.CWSARCH.COM



434 Cumberland Avenue Portland ME 04101
OFFICE: 207 774 4441 CWSARCH.COM

CWS ARCHITECTS | INTERIOR DESIGN

AD1.01
DRAWING NUMBER

SCALE: 1/8" = 1'-0"

DATE: 01/08/2016

ISSUED FOR CONSTRUCTION

