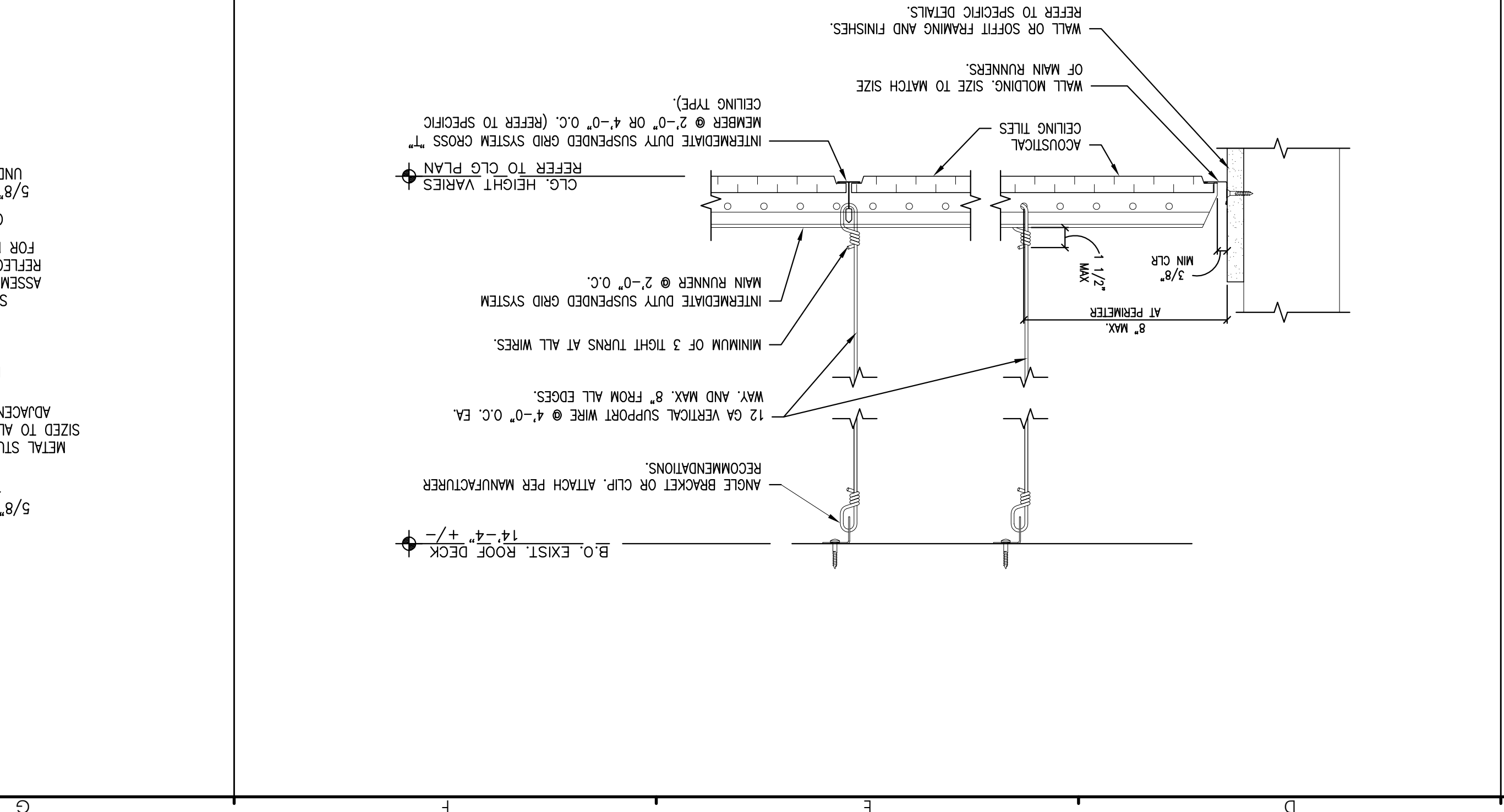
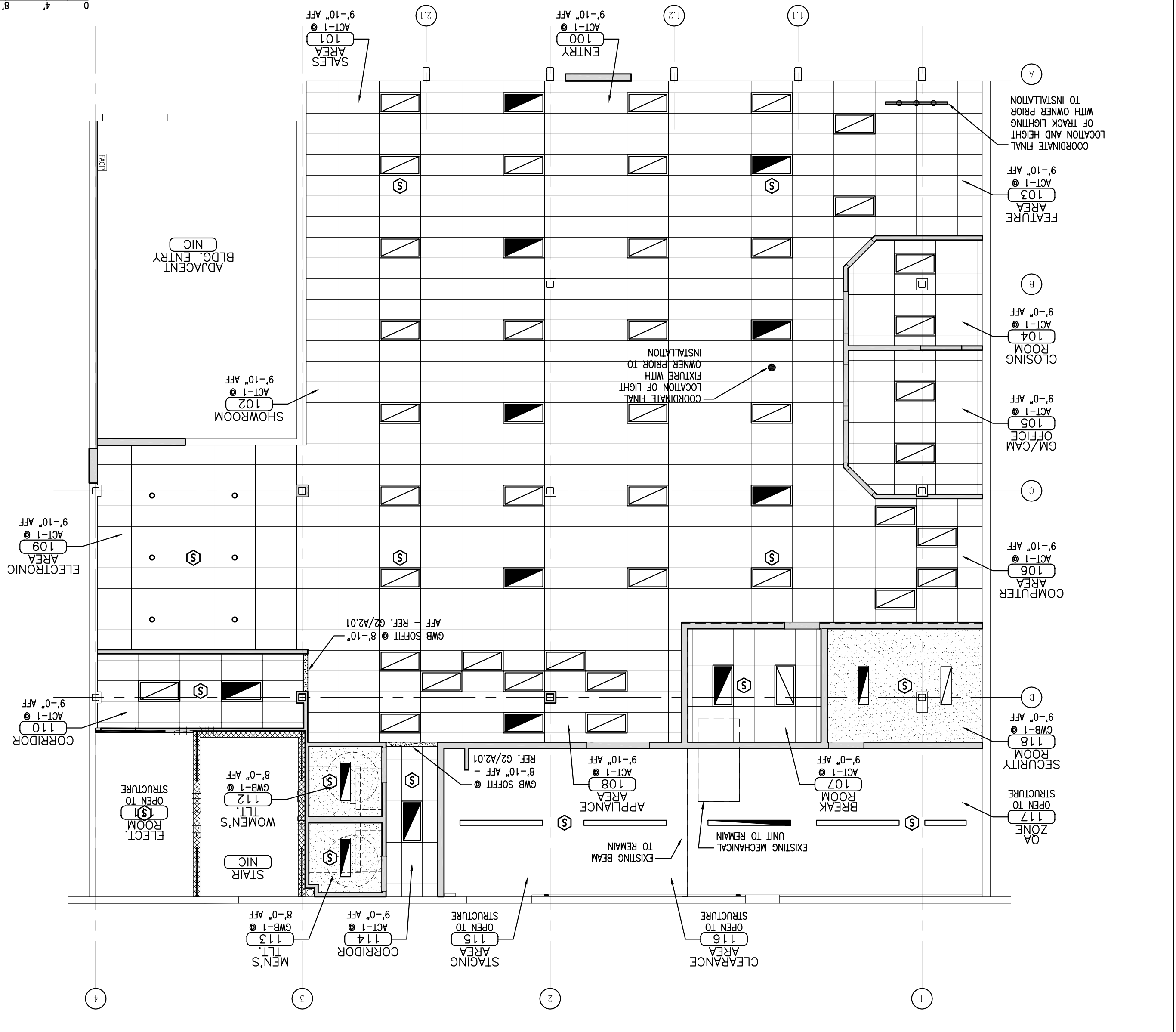
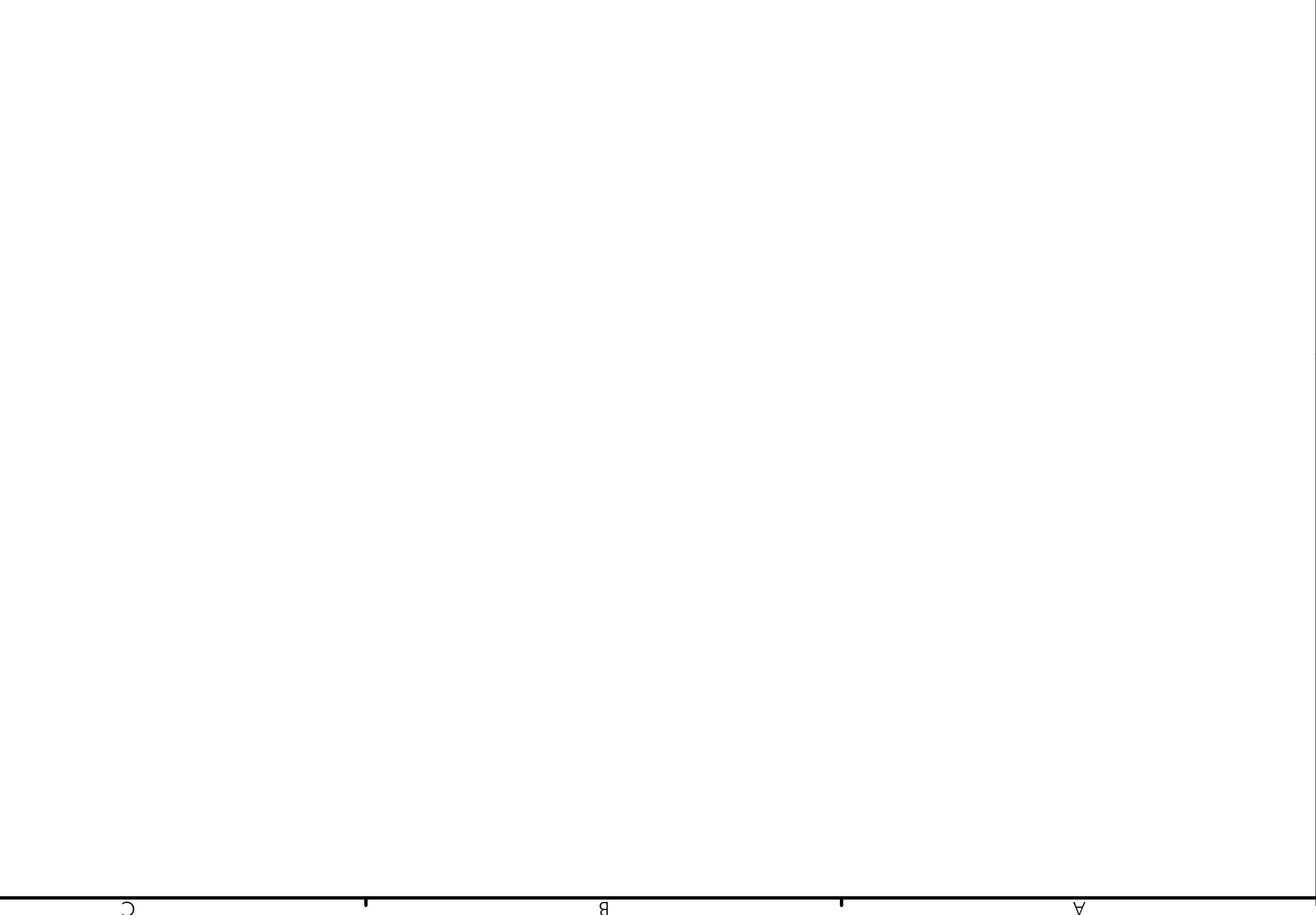


SYMBOL	DESCRIPTION	MODEL NO
●	CASH WRAP	
	DISTRIBUTOR	JUNO
	MANUFACTURER	JUNO
	LINE VOLTAGE	MONOPOINT ADAPTER
	FIXTURE	PAR38 GIMBALL - WHITE R534WH
	LAMP	PAR38 LED LAMP LED17E26P3827KFL
	DISTRIBUTOR	CAPTOL LIGHTING
	MANUFACTURER	JUNO
	FEATURE AREA	
	DISTRIBUTOR	JUNO
	MANUFACTURER	JUNO
	FIXTURE	PAR38 GIMBALL - WHITE R534WH
	LAMP	PAR38 LED LAMP LED17E26P3827KFL
	DISTRIBUTOR	CAPTOL LIGHTING
	MANUFACTURER	JUNO
	TRACK - 6 FOOT	SINGLE CIRCUIT - WHITE R6WH
	EXTENSION WAND	EXTENSION WAND - 12" LONG - WHITE TW12WH
	EXTENSION WAND	EXTENSION WAND - 18" LONG - WHITE TW18WH
	EXTENSION WAND	EXTENSION WAND - 24" LONG - WHITE TW24WH
	EXTENSION WAND	EXTENSION WAND - 36" LONG - WHITE TW36WH
	END FEED	FLOATING END FEED - WHITE R29WH
	T-BAR CLIP	T-BAR CLIP - WHITE R37F
	FIXTURE	PAR38 GIMBALL - WHITE R534WH
	COLOR	SW 6423 RYEGRASS
	LAMP	PAR38 LED LAMP

MANUFACTURER	DISTRIBUTOR	PHONE	CONTACT	OFFICE	CELL
JUNO	CAPTOL LIGHTING	(610) 584-0230	Lois Imperial	(610) 584-0230	

VENDOR CONTACT INFORMATION



REVISIONS

--	--	--	--

DRAWING

PROJECT
 AARON'S FIT-UP STORE #: F0810
 449 FOREST AVE. PORTLAND, MAINE 04101

OWNER
 AARON'S
 309 EAST PACES FERRY ROAD ATLANTA, GEORGIA 30305 PHONE: (678) 402-3000

DESIGNER
 CWS ARCHITECTS ARCHITECTURE | INTERIOR DESIGN
 434 CUMBERLAND AVENUE PORTLAND, ME 04101 PHONE: 207-774-4441 FAX: 207-774-4441 WWW.CWSARCH.COM

434 Cumberland Avenue Portland, ME 04101
 OFFICE: 207 774 4441 CWSARCH.COM
 ARCHITECTURE | INTERIOR DESIGN

NOTE: THESE DRAWINGS HAVE BEEN UPDATED TO THE CURRENT SPECIFICATIONS FOR AN AARON'S SALES AND LEASE OWNERSHIP STORE. DEVIATION FROM THESE PLANS IS NOT PERMITTED WITHOUT EXPRESS WRITTEN PERMISSION.