

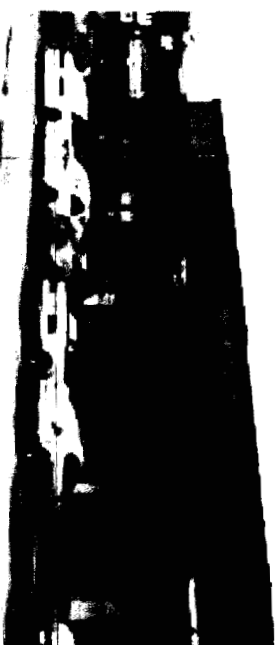
Sign Schedule

Existing Sign Inventory

#	Qty	Description	RC#	#	Qty	Sign Code	Description
1	1	Illuminated Sign Band	019194	1	1	REFACE WALL	Reface Wall Sign
2	1	Illuminated Sign Band	019194	2	1	REFACE WALL	Reface Wall Sign
3	1	D/F Illuminated tenant panel	019194	3	1	REFACE TENANT	Reface D/F tenant panel
4	1	Illuminated ATM Header	019194	4	1	REFACE ATM HEADER	Reface ATM Header

Proposed Sign Inventory

#	Qty	Description	RC#	#	Qty	Sign Code	Description
1	1	Illuminated Sign Band	019194	1	1	REFACE WALL	Reface Wall Sign
2	1	Illuminated Sign Band	019194	2	1	REFACE WALL	Reface Wall Sign
3	1	D/F Illuminated tenant panel	019194	3	1	REFACE TENANT	Reface D/F tenant panel
4	1	Illuminated ATM Header	019194	4	1	REFACE ATM HEADER	Reface ATM Header



Existing Sign - Illum 28" x 20'-0"
2, 3, 3



1 Wall Sign Reface

NOTES
White plex face, applied 3M Scotchcal #VQ-10019 Dk Green vinyl background. Applied 3M Scotchcal # VQ-10018 light green rule line and Logo box. Removed copy.

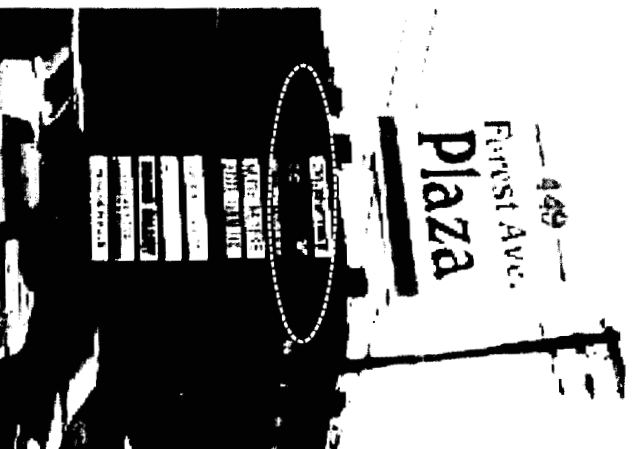


Existing Sign - Illum 28" x 8'-0"
2, 3, 3



2 Wall Sign Reface /With ATM tagline

NOTES
White plex face, applied 3M Scotchcal #VQ-10019 Dk Green vinyl background. Applied 3M Scotchcal # VQ-10018 light green rule line and Logo box. Removed copy.

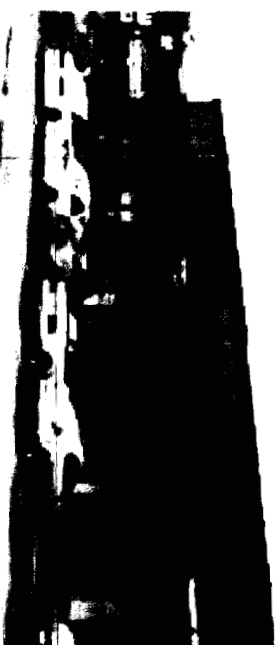


Existing Sign - Illum 8" x 72"
6



3 Reface D/F Tenant Pane /With ATM tagline

NOTES
White plex face, applied 3M Scotchcal #VQ-10019 Dk Green vinyl background. Applied 3M Scotchcal # VQ-10018 light green rule line and Logo box. Removed copy.

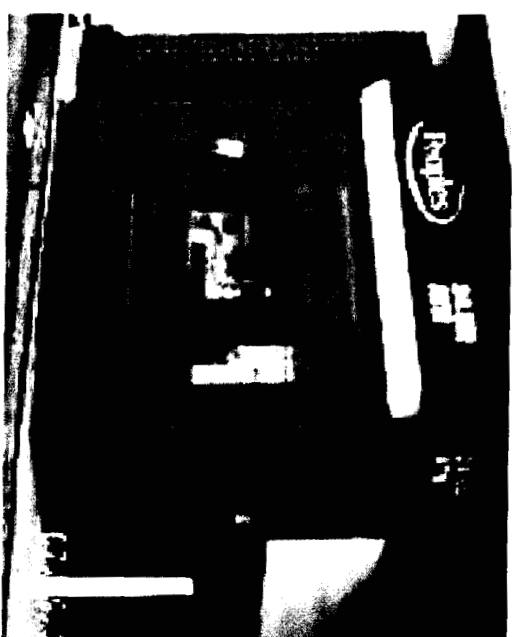


Existing Sign - Illum 28" x 20'-0"
2, 3, 3



1 Wall Sign Reface

NOTES
White plex face, applied 3M Scotchcal #VQ-10019 Dk Green vinyl background. Applied 3M Scotchcal # VQ-10018 light green rule line and Logo box. Removed copy.



Existing Sign - Illum 20" x 108"
1, 6, 6 9



4 ATM Header Reface

NOTES
White plex face, applied 3M Scotchcal #VQ-10019 Dk Green vinyl background. Applied 3M Scotchcal # VQ-10018 light green rule line and Logo box. Removed copy.



Reface ATM sides

Customer Review:

- Approved as submitted
- Approved as noted
- See Notes - Resubmit Drawing for Review and Approval

NAME _____ DATE _____

THIS IS AN ORIGINAL UNPUBLISHED DRAWING CREATED BY NW SIGN INDUSTRIES, INC. IT IS PROVIDED FOR THE EXCLUSIVE USE BY THE CUSTOMER AND FOR THE PROJECT NAMED IN THIS TITLE BLOCK. IT SHALL NOT BE PROVIDED TO ANY OTHER SIGN MANUFACTURER OR USED FOR ANY OTHER PROJECT WITHOUT THE WRITTEN PERMISSION OF NW SIGN INDUSTRIES, INC. THIS DRAWING IS AN INSTRUMENT OF SERVICE AND SHALL REMAIN THE EXCLUSIVE PROPERTY OF NW SIGN INDUSTRIES, INC. © NW SIGN INDUSTRIES, INC. 2005

REVISION _____ DATE _____

NW SIGN INDUSTRIES
of New Jersey
360 CRIDER AVENUE
MOORESTOWN, NJ 08057
(856) 802-1677 • Fax: (856) 802-0412



CUSTOMER: **Banknorth**
ADDRESS: **449 Forest Ave
Portland, ME**
SITE #: **019194**
FILE NAME: 019194-05-487-TD Banknorth Forest Ave Portland ME.dwg
SALES REP: **DOH** DESIGNER: **mlh**
DRAWING NUMBER: **05-487**

05-487
PAGE 1 OF 1