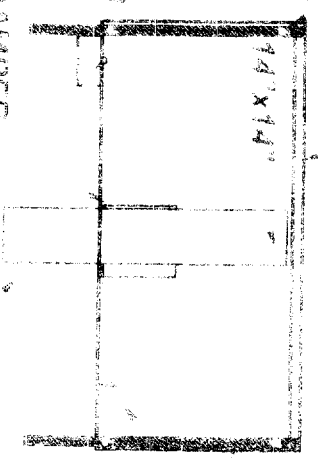


PROPERTY LINE

HOOD SUPP. CRT POINTS
TYPICAL (R/R) FIRE SUPPRESSION
CONTROL

CONCRETE
BLOCK
WALL
3" AIR
SPACE
MIN. 18"

HOOD
TYPE (NO) 20 MSG STAINLESS STEEL
2" X 4" W/ 2" FOR MEDIUM DUTY COOL
DUTY AIRFANCES 360 CFM/F00T EXHA



UNTEMPERED
MAKE UP STEEL W/ W
UNDER HOOD

2" X 3" X 1/4"
STEEL ANGLE
TYPICAL FOR (2)
EACH HOOD
SPAN MINIMUM
(5) JOISTS

2" X 1/2" WOOD
JOISTS 16" O.C.

1 1/2" X 8" X 1 1/2" 2" X 1/2" DOWN
W/ 1 1/2" DUCT WRAP
FROM SUPPLY RAY
BEARING WALL

DHW

STEEL POST
1 1/2" X 6" O.C. (R/R)

HOOD FAN
CONTROL PANEL

KEF-2

KEF-1

MINIMUM 10"
14" X 14" W/ 1 1/2"

STEEL W/ W
INSULATED
FLEX DUCT
4" TYPE 20 MSG STAINLESS STEEL
4" O.C. W/ 4" FOR LIGHT DUTY SWIRLING
DUTY AIRFANCES 360 CFM/F00T EXHAUST

KSF-1



HOOD SUPPORT POINTS
R/R AT F0R14

NEW RATED
METAL STUD
WALL
3" AIR
SPACE
12" X 14"

EXISTING
DUCT

NEW FIRE
RATED

EXISTING
WALL

EXISTING
DUCT

EXISTING
CONCRETE
WALL

EXISTING
WOOD
BEAM

EXISTING
WOOD
BEAM

EXISTING
WOOD
BEAM

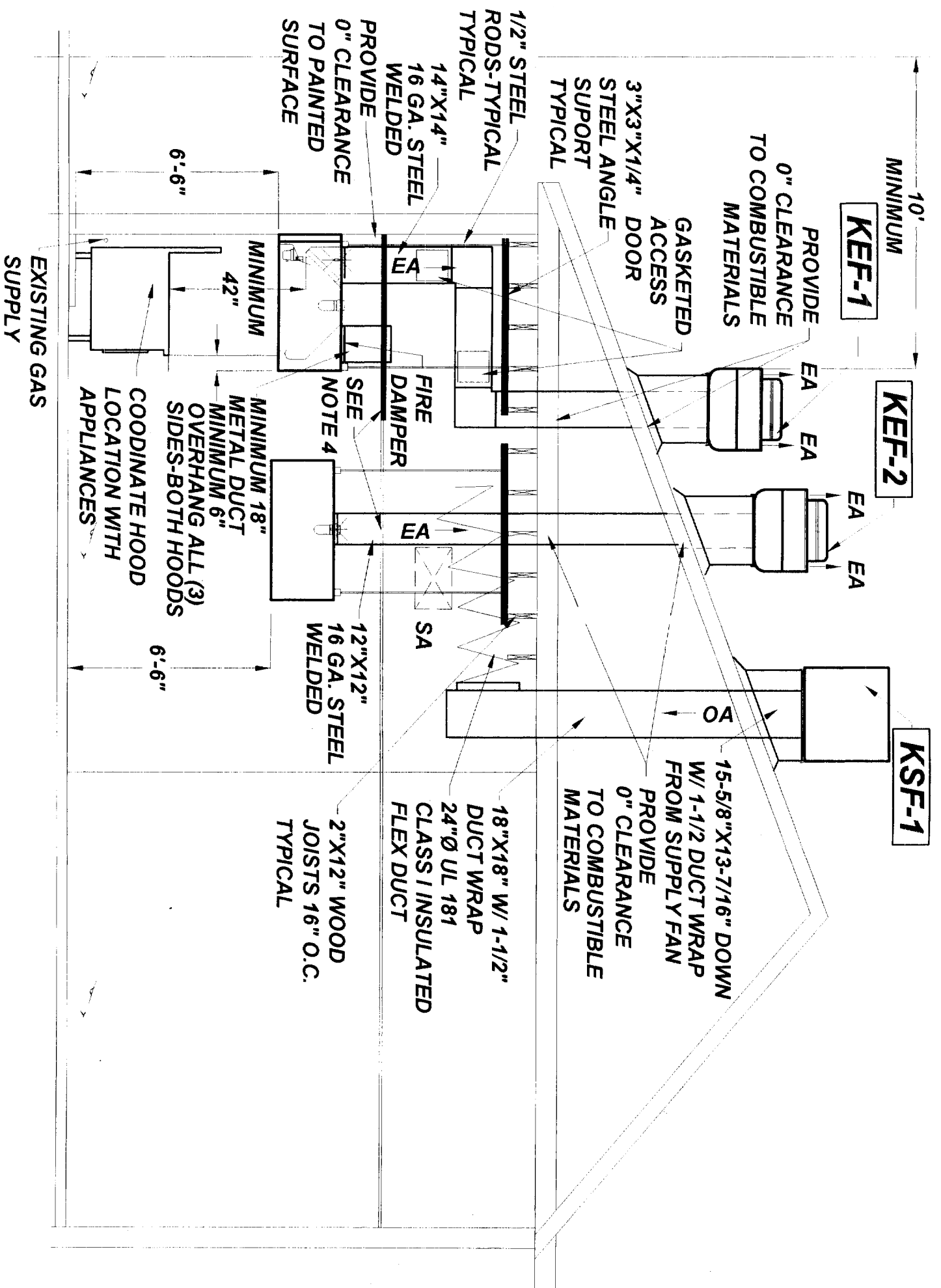
EXISTING
WOOD
BEAM

FAN AND HOOD SCHEDULE

TAG	SERVICE	CFM	ESP	RPM	HP	WHEEL DIA. INCHES	POWER	MAX SONES	FAN WEIGHT LBS.	HOOD WEIGHT LBS.	GRAINGER PRODUCT #	N
KEF-1	HOOD EXHAUST	2,700	1.0	1,400	1	16-1/2	208/230/60/1	21.0	111	432	7A626	1
KSF-1	UNTEMPERED SUPPLY	2 160	0.625	680	1	12-1/2	208/230/60/1	24.0	252	N/A	7D503	1
KEF-2	HOOD EXHAUST	900	1.0	1,540	1/3	12-1/4	120/60/1	13.4	79	216	7A594	1

NOTES:

1. OPERATED FROM HOOD FAN SWITCH WITH PILOT LIGHT
2. 2-SPEED MOTOR 1725/1140. INTERLOCK WITH HOOD FAN SWITCH
3. KEF-1 AND KEF-2 SHALL BE UL 762 LISTED



PROPERTY
LINE

HOOD ELEVATION

REVISION #3 03-20-06

Project:
**KITCHEN HOODS
 INSTALLATION**
PIZZARIA
 425 Forest Avenue
 Portland, Maine

Installing Contractor:
**ATLANTIC
 RESTAURANT
 SERVICES**
 34 Albion Road
 Windham, Maine 04062

DESIGNED RPW	DATE 02-12-06
DRAWN RPW	SCALE 1/4" = 1'-0"
CHECKED RPW	JOB. NO.

SHEET NO.
HOOD-1

REPRODUCTION OR REUSE OF THIS
 DOCUMENT WITHOUT THE
 EXPRESS WRITTEN CONSENT OF
 AMTREC ENGINEERING, P.A.
 IS PROHIBITED

KITCHEN HOOD GENERAL NOTES

1. HOOD CONTRACTOR SHALL COORDINATE INSTALLATION WITH OTHER TRADES.
2. ALL DUCTWORK IS SHOWN DIAGRAMATICALLY. EXACT LOCATIONS ARE TO BE DETERMINED IN THE FIELD.
3. ALL DUCT SIZES SHOWN ARE OUTSIDE DIMENSIONS.
4. PROVIDE FIRE RATED CEILING TILE ABOVE AND AROUND PERIMETER OF BOTH HOODS. TO MAINTAIN 3" MINIMUM SEPARATION
5. WIRE HOOD FIRE EXTINGUISHING SYSTEMS TO AUTOMATICALLY SHUT OFF ALL SOURCES OF FUEL AND HEAT FOR APPLIANCES UNDER THE HOOD.
6. MAINTAIN MINIMUM 1,500 FPM AIR VELOCITY IN HOOD EXHAUST DUCTS
7. INSULATION: HOOD EXHAUST DUCTS: FIRE MASTER COMMERCIAL KITCHEN DUCT WRAP FP-60 BLANKET. MAKE-UP AIR DUCT: 1-1/2" FIBERGLASS BATT.
8. HOOD FILTERS: ALUMINUM BAFFLE MINIMUM 42" ABOVE COOKING SURFACE.
9. FASTEN 3"X3" ANGLE TO WOOD FLOOR JOISTS SECURELY

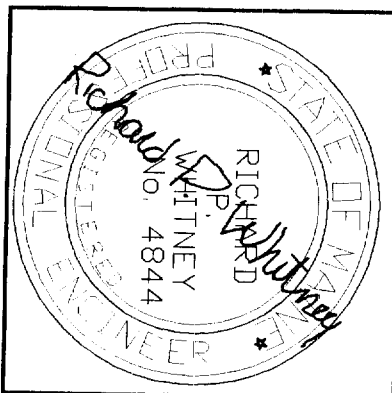
HVAC LEGEND

- SUPPLY DUCT
- EXHAUST OR RETURN DUCT
- SA SUPPLY AIR
- OA OUTSIDE AIR
- EA EXHAUST AIR
- O.C. ON CENTERS
- N/A NOT APPLICABLE

4

4

REVISIONS		
NO.	DATE	DESCRIPTION
1	2/27/06	RELOCATED FAN FOR 10' SEPARATION TO PROPERTY LINE
2	3/1/06	ADDED STRUCTURAL COMPONENTS
3	3/20/06	ADDED FAN WEIGHTS



Richard Whitney Engineering P.A.
Mechanical Engineering
 3 Danforth Street, Portland, ME 04101
 7-874-7449 Fax: 207-874-7849