

General Notes:

- Follow all Manufacturer's Recommendations for Storage, Assembly and Installation methods.
- Provide all Material Specs and Literature in a bound folder to Owner at completion of project.
- Follow all Manufacturer's Procedures and Policies regarding Warranties.
- Provide all written Warranties in a bound folder to Owner.

Construction:

- All structural lumber in direct contact with concrete must be Pressure Treated.
- All exterior trim to be PVC with wood grain texture.
- All exterior trim is to be rabbeted to fit over the siding. Minimize use of J-channel.

Insulation:

- Ceilings and sloped roof = Open cell spray R-49 minimum
- Exterior walls = Open cell spray R-20 minimum
- Garage ceiling = Material TBD - R-30 minimum with (2) layers 1-1/2" foamboard.
- See floorplan and Typical section
- Insulate all interior walls around the bedroom and bathroom with Roxul
- Exterior shell of structure to be insulated. No vents in eaves, gable ends or ridge.

Mechanical:

- Contractor to work with a qualified electrician to provide carbon monoxide alarms and smoke alarms per R315 and R314. Coordinate with Building Inspector.
- Contractor to coordinate with Mechanical Contractor to design and install a proper Energy Recovery Ventilation unit (ERV) taking into consideration the specific and separate needs of the Mechanical space.
- All specs for the Mechanical space and systems provided separately by Others.

Architectural asphalt roofing shingles. Dual thick or similar. Mandat for hurricane conditions. Weaved valleys.

Advance roof sheathing - stagger joints
Painted 1/6" trim
Painted 1/6" trim
Painted 1/6" trim over cont. furring

2x6 collar tie each bay
1x4 strapping 16" o.c.
Finished gypsum wall board. Moisture resistant in bathroom.

2x4 bump out on gable ends. See elevations
Painted 5/4x3 trim

Painted 1x4
Painted 1x4 over cont. furring
Sanded 4x6 Hemlock rail
Heavy gauge bent flashing. Coordinate color with trim color
Painted 1x6 window trim
See Typical window header detail

3/4" Advance T&G sheathing attached w/ screws & adhesive
Floor joists per Structures

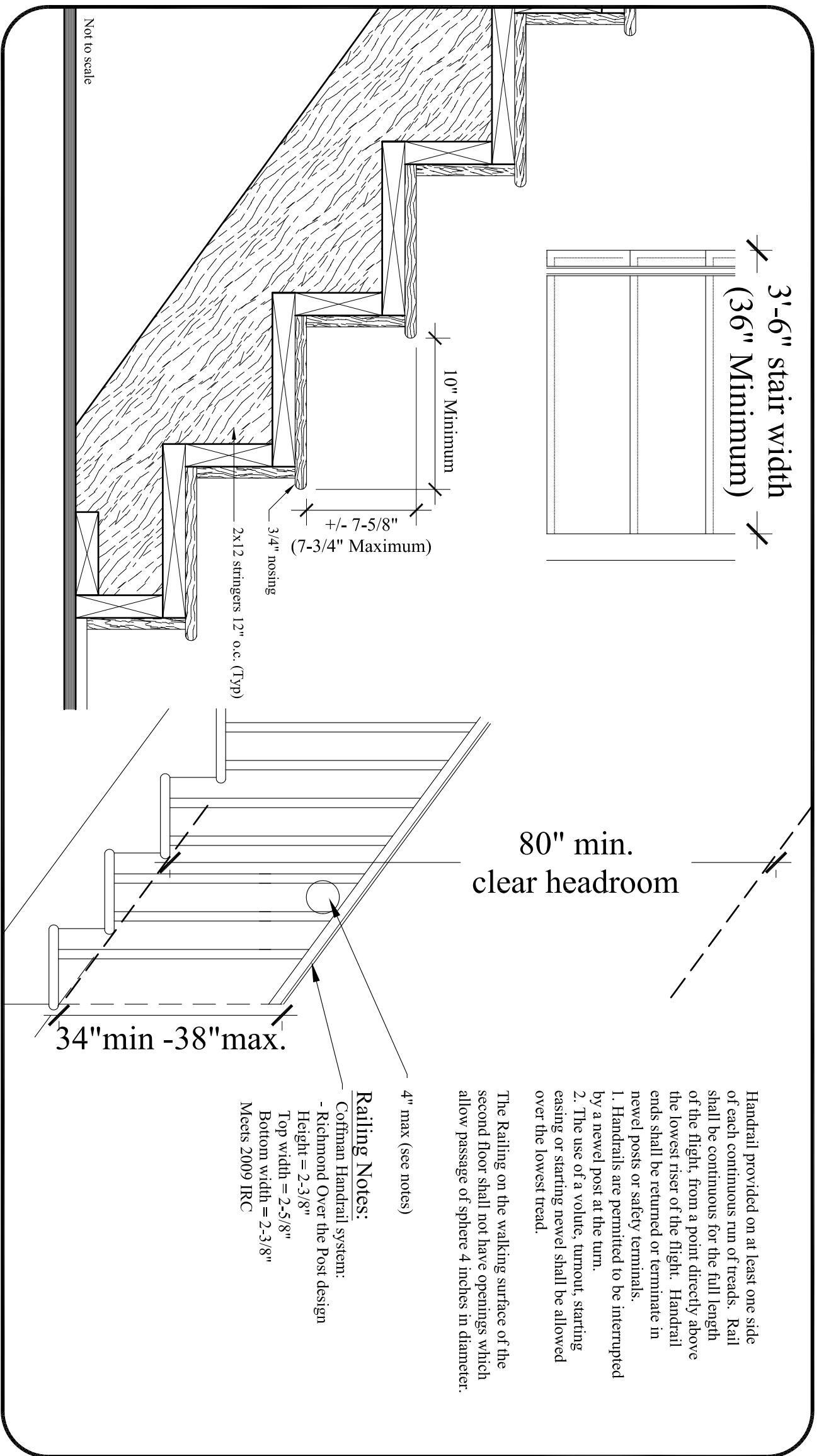
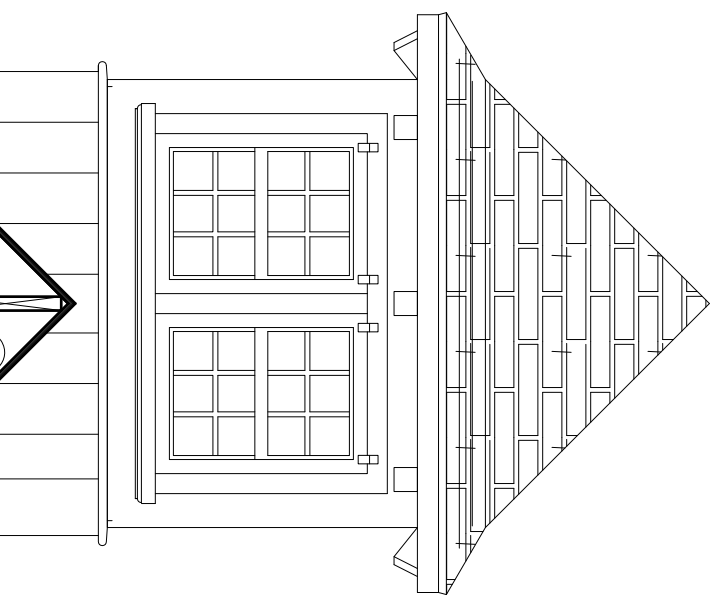
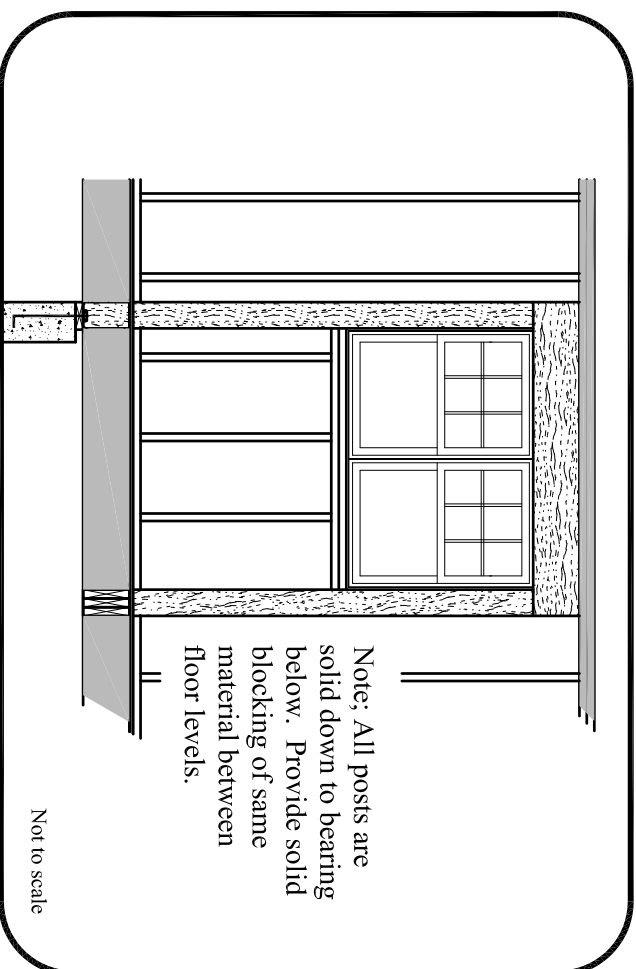
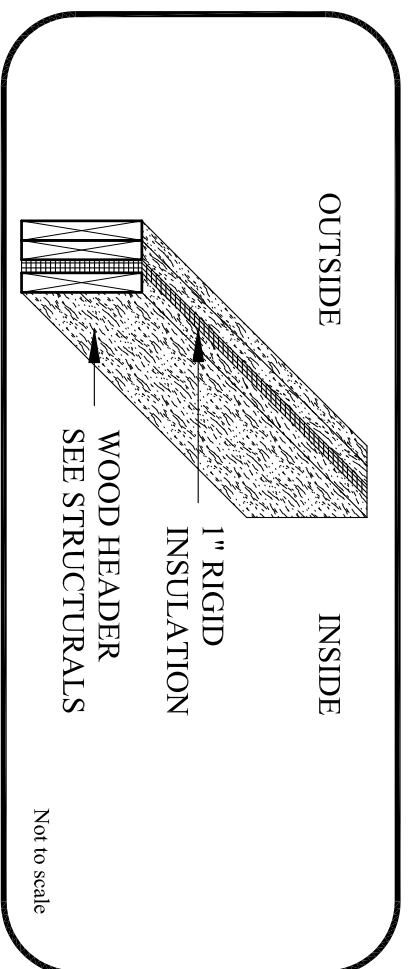
Traditional window sills to match Building #1
Double sill plates typical on all window openings.
KD 2x10's @ rafter nail locations for additional support.
Provide @ both sides of rafter and attach with xxx thru bolts.
Cont. ripped 2x in between rafter tails
Advance roof sheathing
2x0 T&G Hemlock boards
Hemlock 6x8 bbs

Painted 1-3/4" crown molding
Ripped painted 1x
Painted 1x6 over cont. furring

(2) layers 1-1/2" rigid insulation. Install in perpendicular layers
1x4 strapping 16" o.c.
Cont. layer 5/8" Freecode C rated drywall - Install throughout garage ceiling, all walls and common wall around mechanical room.

5/8" Freecode C drywall throughout garage

See floorplan for further specs
KD studs 16" o.c. - align all framing
Advance Zap wall sheathing system
Heavy gauge bent flashing. Coordinate color with trim color
Continuous Masonry cap
Stone veneer - Match existing stone on Building #1 and #2
Verify all specs of attachment and assembly with manufacturer.
Some steel fast into top of foundation wall
4" reinforced concrete slab. See foundation plan for additional information



Solar panels and all equipment specified by Others

Cont. 2x12 p/le
Lamb-to rafters - See Structures

Kneewall with double top p/le
Cont. sheathing on kneewall
Cont. 2x12 sill plate on main roof. Attach all rafters w/ Simpson 3.5 tie down
Rim joists by floor system Manufacturer

2x6 ceiling ties each bay - Attach with hangers

1-5/8" framing to tip on beam

See stair detail

Typical Section
Scale: 1/2" = 1'-0"

Detail F2
Interior Stairs

CUSTOM CONCEPTS, INC.
ARCHITECTURE

383 U.S. ROUTE 1, SUITE 1A - SCARBOROUGH, MAINE 04074
House Bldg # New Energy Building & Caretaker's Residence WWW.CUSTOMCONCEPTSINC.COM

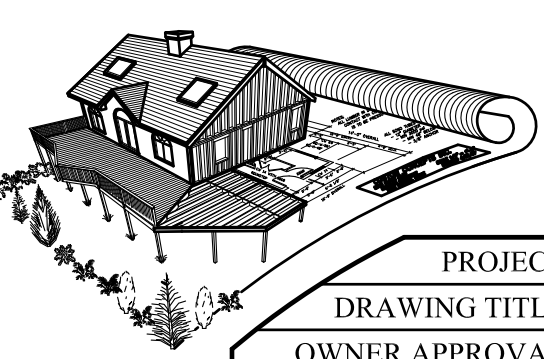
PROJECT: Typical Section & Specifications

DRAWING TITLE:
OWNER APPROVAL:

JOB NUMBER: 9269-14
DRAWN BY: MER
SCALE: As noted

Preliminary Design
 Design Development
 Contract Documents
CLIENT REVIEW ONLY - NOT CONSTRUCTION
CLIENT REVIEW AND COST ESTIMATING
FOR PERMITS, BIDS, AND CONSTRUCTION

NO.	DATE	DESCRIPTION
REVISIONS		



A5

DATE: May 19, 2015