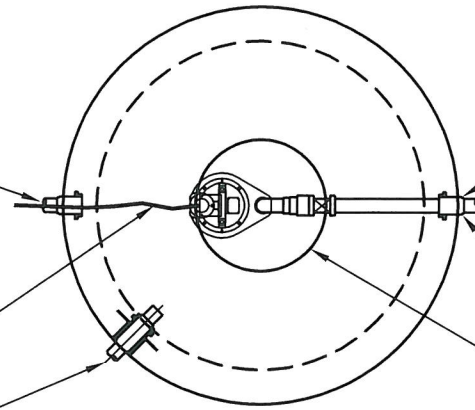


7 CONDUCTOR, 12 GAUGE
DIRECT BURIAL CABLE, 30'
STANDARD ADDITIONAL
CABLE AVAILABLE UPON
REQUEST

4"x4"x4" PVC JUNCTION
BOX. ALL CONNECTIONS
INSIDE BOX ARE TO BE
JOINED WITH HEAT-SHRINK
BUTT CONNECTORS

INLET PIPE,
WATERTIGHT BOOT



PLAN VIEW

NOTES:
CONCRETE SPECIFICATIONS:

1. 4,000 PSI AFTER 28 DAYS
4%-6% ENTRAINED AIR
2. ALL REINFORCING IS GRADE 60
FOR H-20 LOADING.
3. ALL PENETRATIONS TO TANK
ARE INTEGRALLY CAST.

2" FB MALE ADAPTER ATTACHED
TO OUTSIDE OF PUMP TANK, TO
ACCEPT 2" COIL PLASTIC PIPE

2" SCHEDULE 40 PVC FEMALE
ADAPTER CAST IN CONCRETE

24"φ CLEAR OPENING ACCESS,
CONCRETE COVER H-20, TO
ALLOW SERVICING OF PUMP

24"φ x6" CAST IRON
FRAME & COVER
H-20 "SEWER"

4"x4"x4" PVC
JUNCTION BOX

H-20 LOADING FORM
FRAME, COVER AND
CONCRETE TOP

DIRECT
BURIAL CABLE

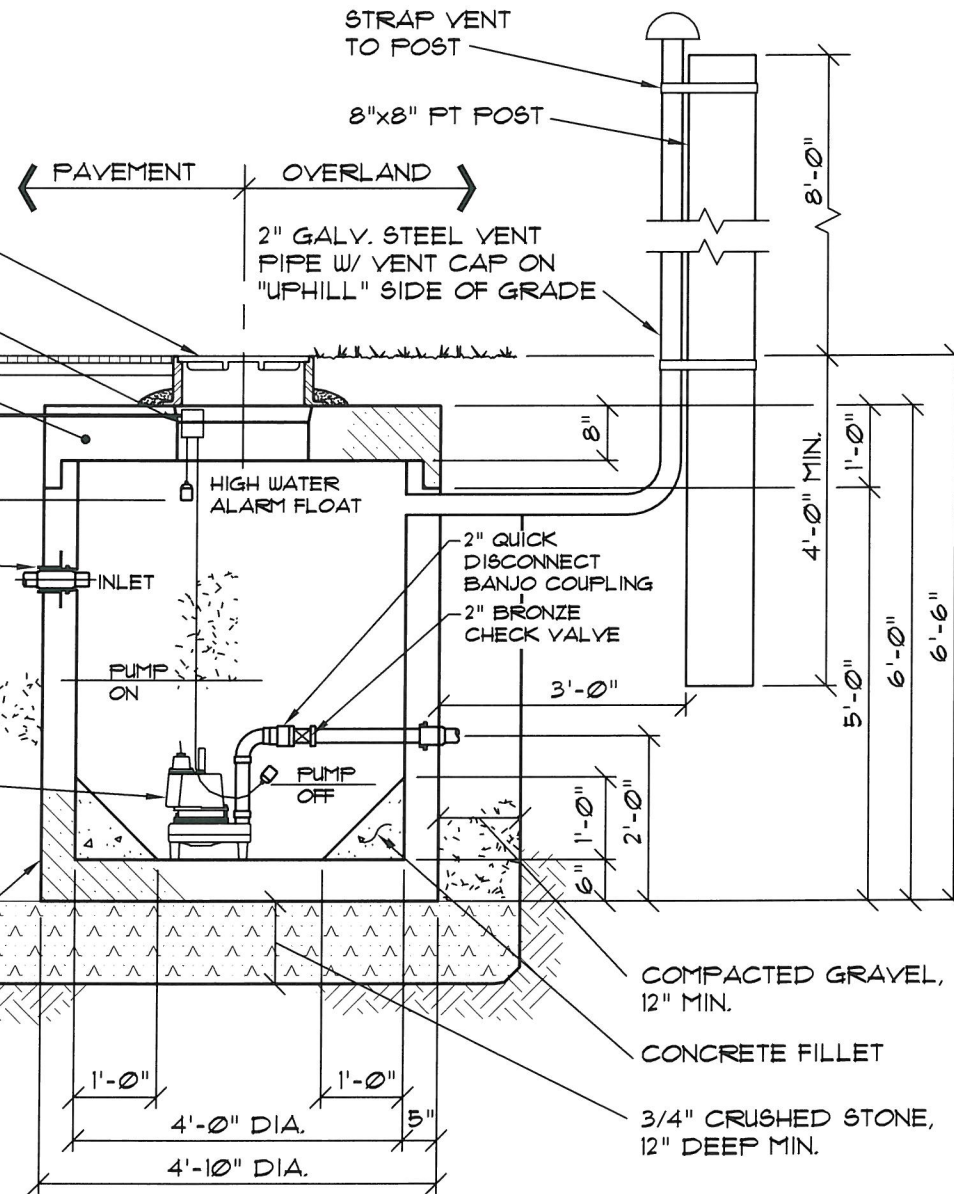
HIGH WATER ALARM

WATERTIGHT FLEXIBLE
BOOT, TYP.

MYERS 1/2 HP EFFLUENT
PUMP MODEL #350HT SERIES
WITH CONTROL PANEL
#FW217-280. PROVIDE
ENUNCIATOR, FLASHING
LIGHT, AND RUN METER

AS REQUIRED

PRECAST CONCRETE WET
WELL FIT WITH POLY FROST
BARRIER, 2 WRAPS OF 10
MIL POLYETHYLENE SHEET
TO 6' BELOW GRADE



STRAP VENT
TO POST

8"x8" FT POST

PAVEMENT OVERLAND

2" GALV. STEEL VENT
PIPE W/ VENT CAP ON
"UPHILL" SIDE OF GRADE

HIGH WATER ALARM FLOAT

INLET

PUMP ON

PUMP OFF

2" QUICK
DISCONNECT
BANJO COUPLING
2" BRONZE
CHECK VALVE

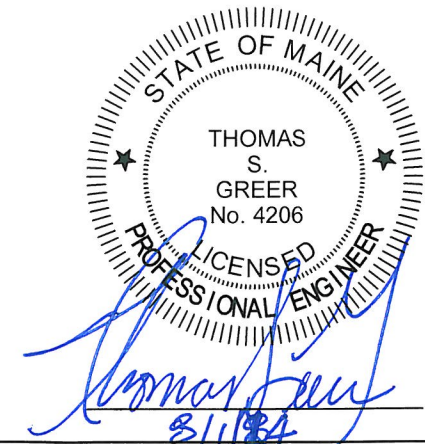
COMPACTED GRAVEL,
12" MIN.

CONCRETE FILLET

3/4" CRUSHED STONE,
12" DEEP MIN.

3 EFFLUENT PUMP

NOT TO SCALE



PINKHAM & GREER
CIVIL ENGINEERS

28 VANNAH AVE. PORTLAND, ME. 04103

CLIFF ISLAND SEPTIC SYSTEM ASSOCIATION
COVE COLLECTION SYSTEM
WHARF ROAD, CLIFF ISLAND, MAINE

C1.2C

SCALE: AS SHOWN DATE: 8/1/14

CHK BY:

PROJECT: 11161