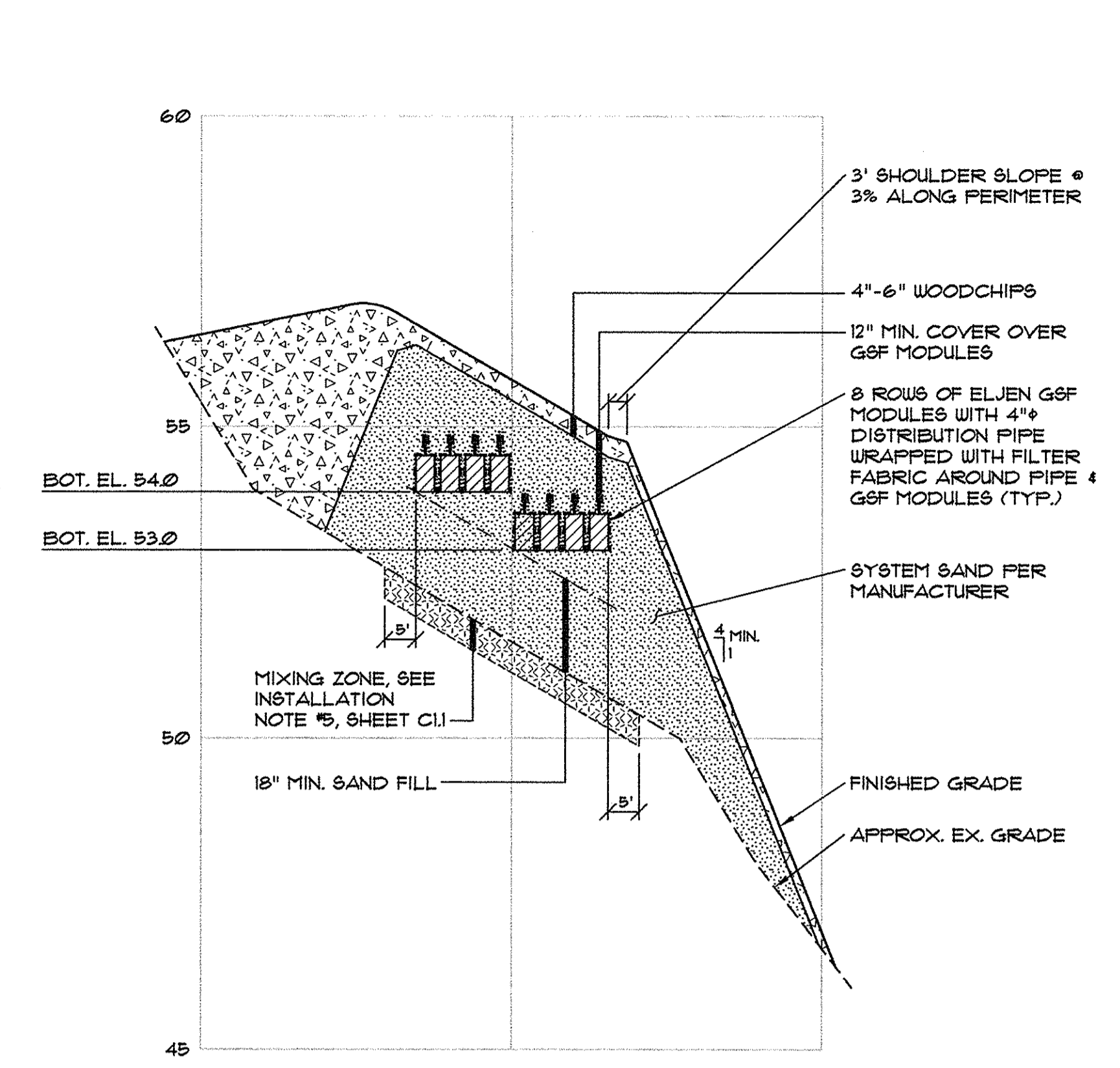
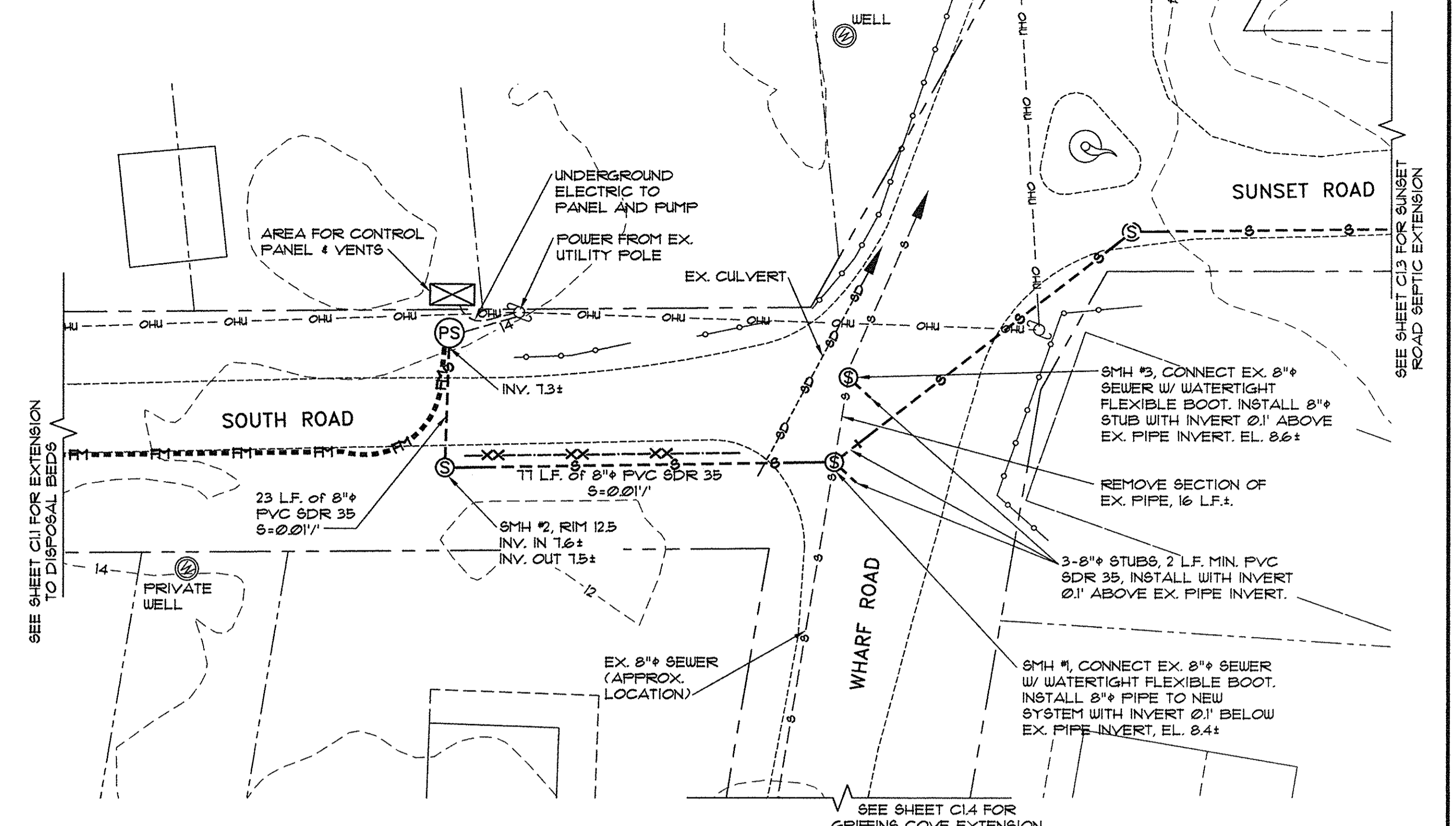


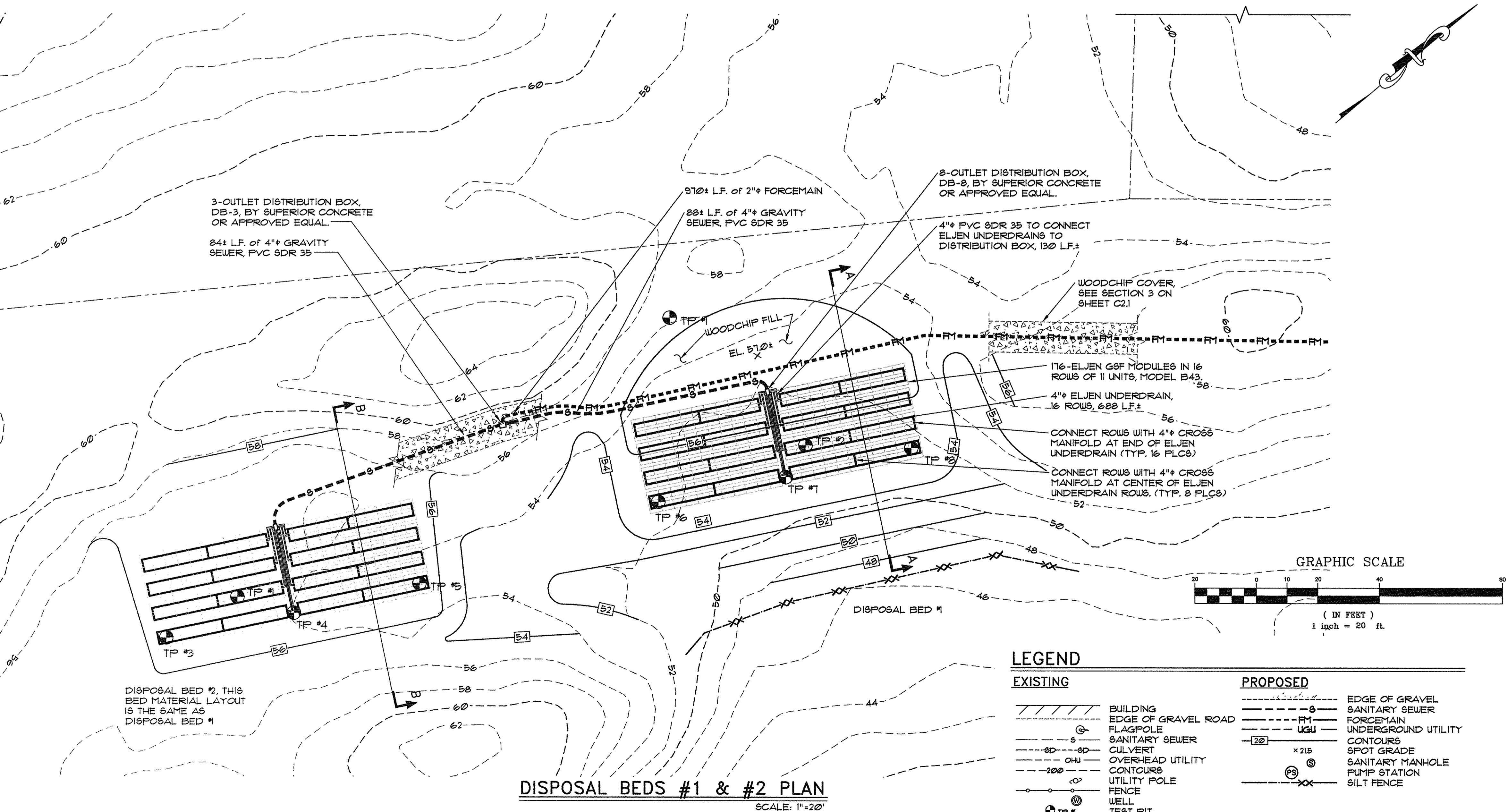
SECTION B-B
SCALE: HORIZ. 1"=20'
VERT. 1"=2'



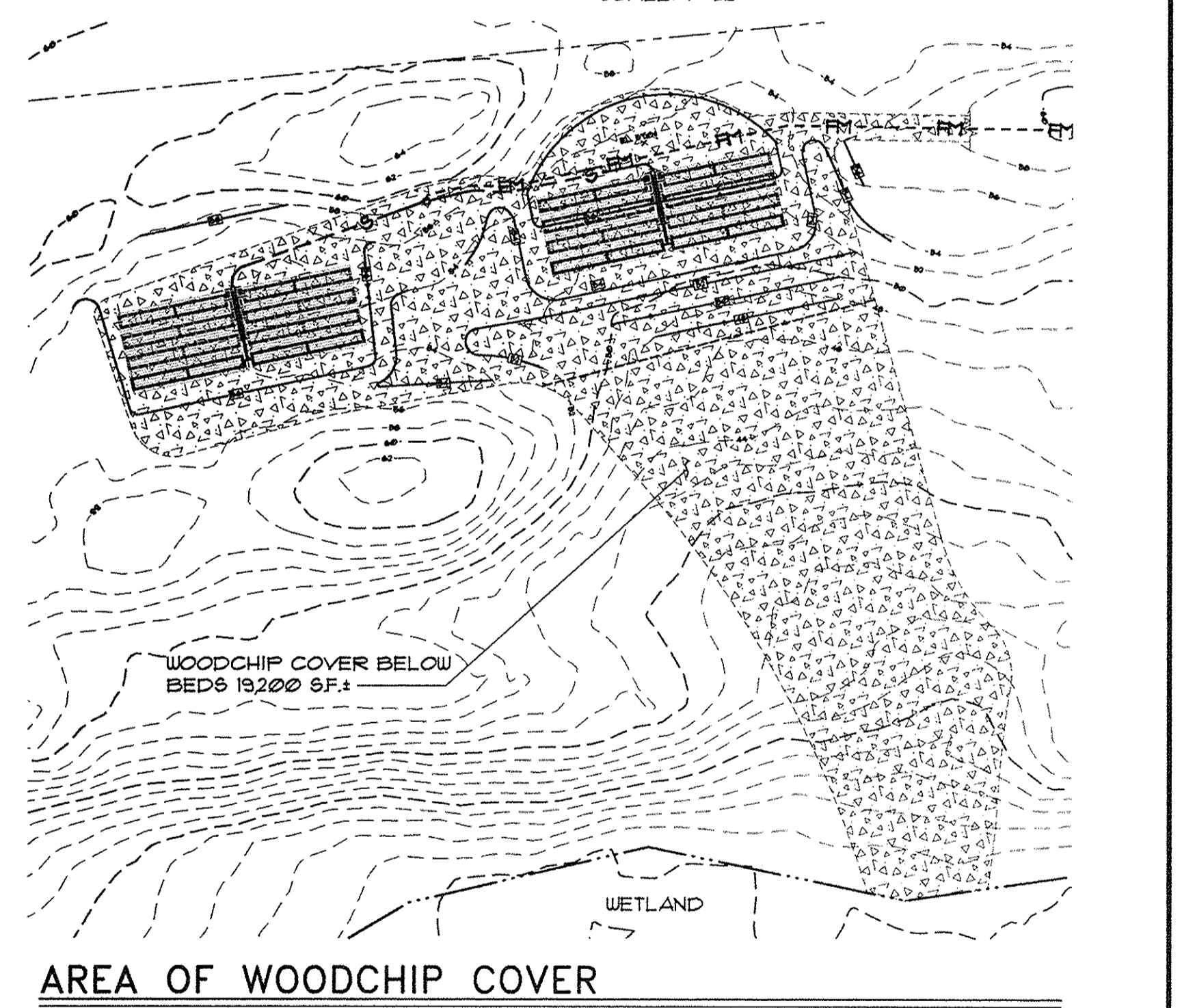
SECTION A-A
SCALE: HORIZ. 1"=20'
VERT. 1"=2'



PUMP STATION & EXISTING SYSTEM CONNECTIONS
SCALE: 1"=20'



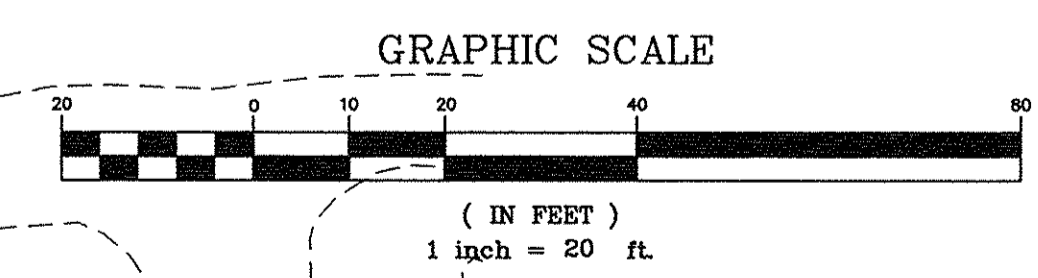
DISPOSAL BEDS #1 & #2 PLAN
SCALE: 1"=20'



AREA OF WOODCHIP COVER
SCALE: 1"=50'

LEGEND

- | | | | |
|-----------------|------------------|-----------------|---------------------|
| EXISTING | | PROPOSED | |
| | BUILDING | | EDGE OF GRAVEL ROAD |
| | FLAGPOLE | | SANITARY SEWER |
| | CULVERT | | FORCE MAIN |
| | OVERHEAD UTILITY | | CONTOURS |
| | UTILITY POLE | | 8" POT GRADE |
| | FENCE | | SANITARY MANHOLE |
| | WELL | | PUMP STATION |
| | TEST PIT | | SILT FENCE |



4	9/23/13	ADDED TEST PITS BY MARK HAMPTON
3	6/25/13	RELOCATED FORCEMAIN
2	4/9/13	ADDED WOODCHIP COVER AREA
1	3/26/13	REVISED FORCEMAIN LOCATION
REV.	DATE	DESCRIPTION

CLIFF ISLAND SEPTIC SYSTEM ASSOCIATION
P.O. BOX 78, CLIFF ISLAND, MAINE

WASTEWATER TREATMENT
CLIFF ISLAND, PORTLAND MAINE

PINKHAM & GREER

CONSULTING ENGINEERS
28 WANAHA AVENUE
PORTLAND, MAINE

SYSTEM LAYOUT DETAILS

SCALE: AS SHOWN	DRN BY: JDC
DATE: OCTOBER 5, 2012	DESG BY: TSG
PROJECT: 11161	CHK BY: TSG

C1.2

9/23/13