

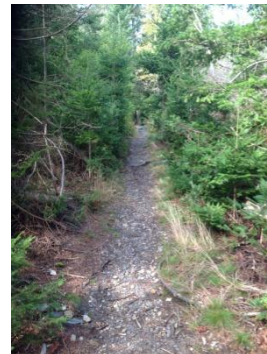
Maine Division of Parks and Public Lands: Jewell Island Trail Rehab. Rex Turner 287-4920, rex.turner@maine.gov

The Maine Division of Parks and Public Lands will be supervising a trail team from the Maine Conservation Corps to reconstruct stone steps, install rock or wood waterbars and several small timber steps, construct a rustic plank bridge, and build a small timber staircase. There may be limited ditching of a short trail segment, though overall ground disturbance will be very limited. Work will be performed by a three-person team with hand tools. Specific work is listed in the table below. Sample photographs are included as well as an attached map of the project.

<u>Lat.</u>	<u>Long.</u>	<u>Structure/Issue/need</u>	<u>Quantity/Length</u>
43.681756	-70.096832	rock steps	12
43.681148	-70.096178	waterbar	4
43.681148	-70.096178	ditching	50 yards
43.675526	-70.099509	rock steps	3
43.675834	-70.100668	rock steps	3
43.680883	-70.095899	waterbar	1
43.681745	-70.094065	waterbar	2
43.682767	-70.094226	timber steps	15'
43.684275	-70.093995	rock steps	2
43.686491	-70.089525	rock steps	6 steps
43.686451	-70.089555	waterbar	2
43.686089	-70.089362	timber steps	2
43.684794	-70.089236	rock steps	2
43.685508	-70.091774	rock steps	12
43.684758	-70.091809	Rustic plank bridge	12'



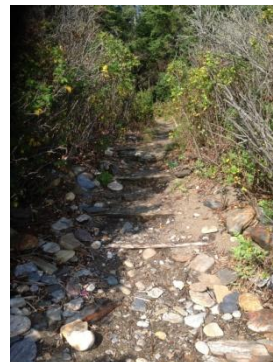
(left) Rustic foot bridge to be replaced.



(Right) Trail segment needing waterbar.



(Left) Stone steps needing repair



(Right) Wood steps needing replacement

Jewell Island Trail Rehab: Project Map

