

CPVC CURING TIMES

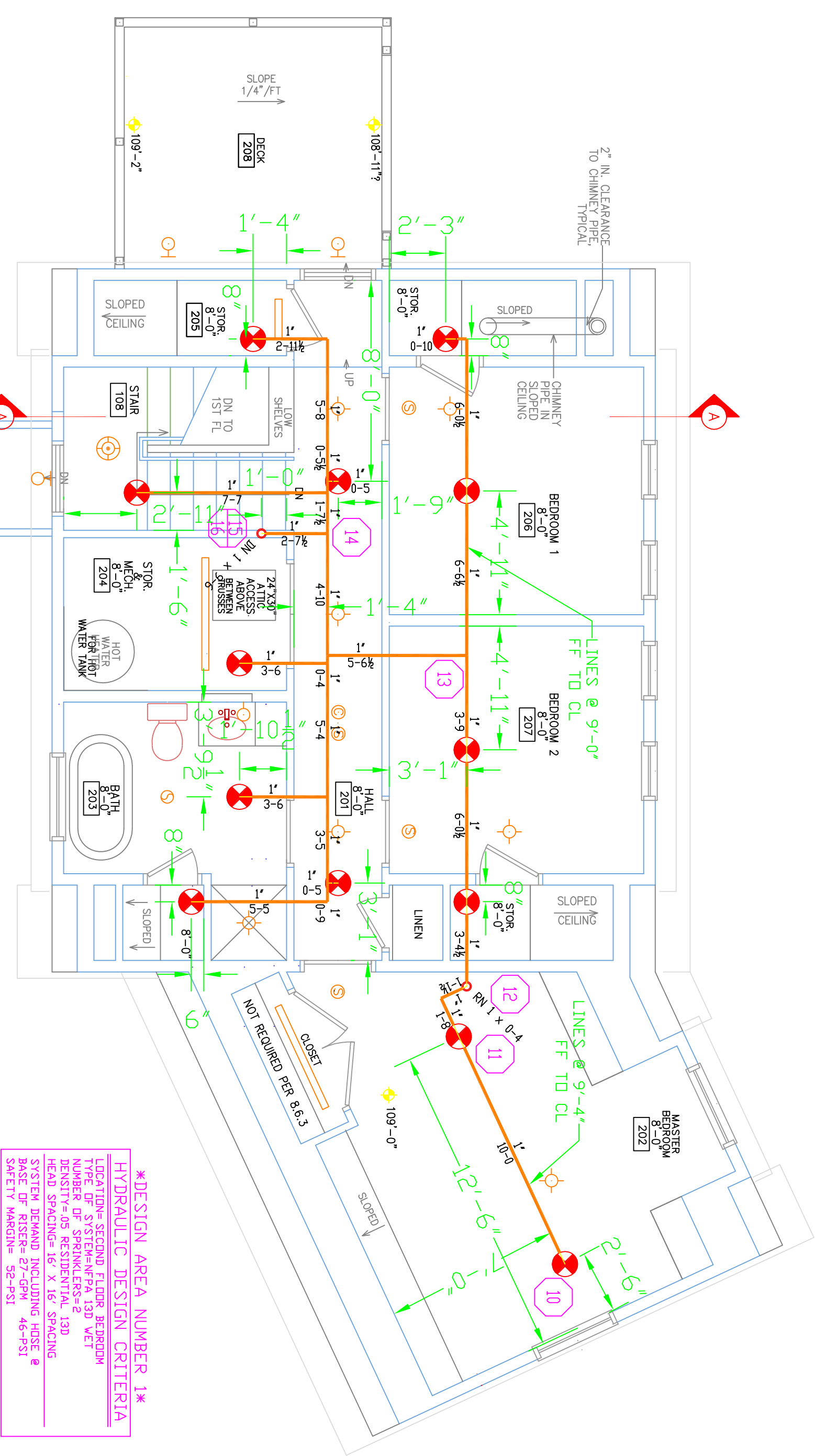
FOR TFP-400, TFP-500  
VICTAULIC #899 & SPEARS FS-5  
CURE TIMES WITH ONE STEP SOLVENT CEMENT  
200 PSI (MAXIMUM) TEST PRESSURE

PIPE SIZE (NPS)	TEMP. 40°F	41°F TO 59°F	60°F TO 93°F
1/2"	45 MIN.	1.5 HR.	24 HR.
3/4"	45 MIN.	1.5 HR.	24 HR.
1-1/4"	1.5 HR.	16 HR.	120 HR.
1-1/2"	1.5 HR.	16 HR.	120 HR.
2-1/2"	6 HR.	36 HR.	SEE NOTE 1
3"	8 HR.	48 HR.	SEE NOTE 1
4"	8 HR.	72 HR.	SEE NOTE 1

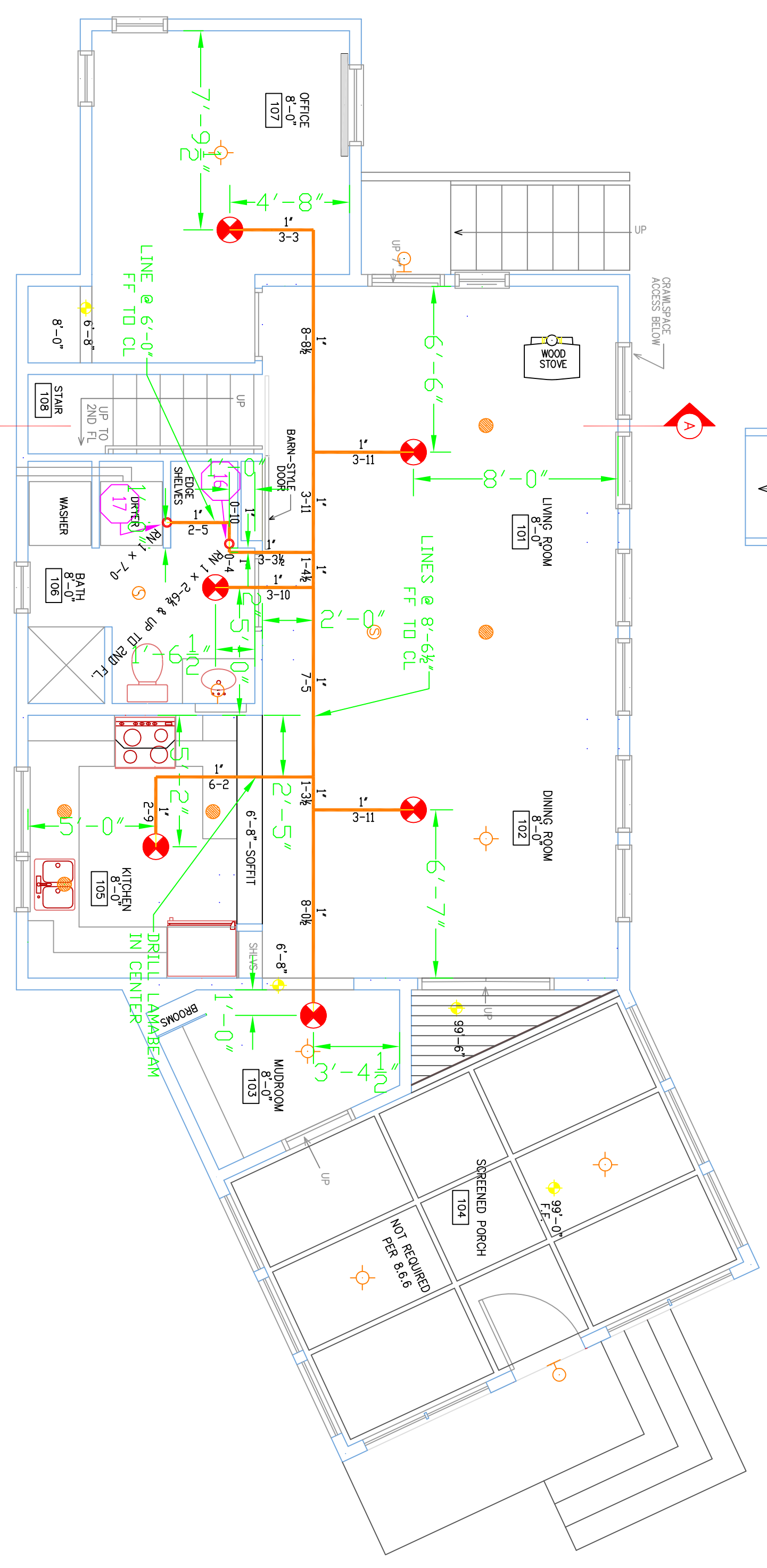
NOTE: 1. FOR THESE SIZES, THE SOLVENT CEMENT CAN BE APPLIED AT TEMPERATURES BELOW 32°F HOWEVER, THE SPRINKLER SYSTEM TEMPERATURE MUST BE RAISED TO A TEMPERATURE OF 32°F OR ABOVE AND ALLOWED TO CURE FOR THE ABOVE RECOMMENDATIONS PRIOR TO PRESSURE TESTING.

CPVC HANGING NOTES

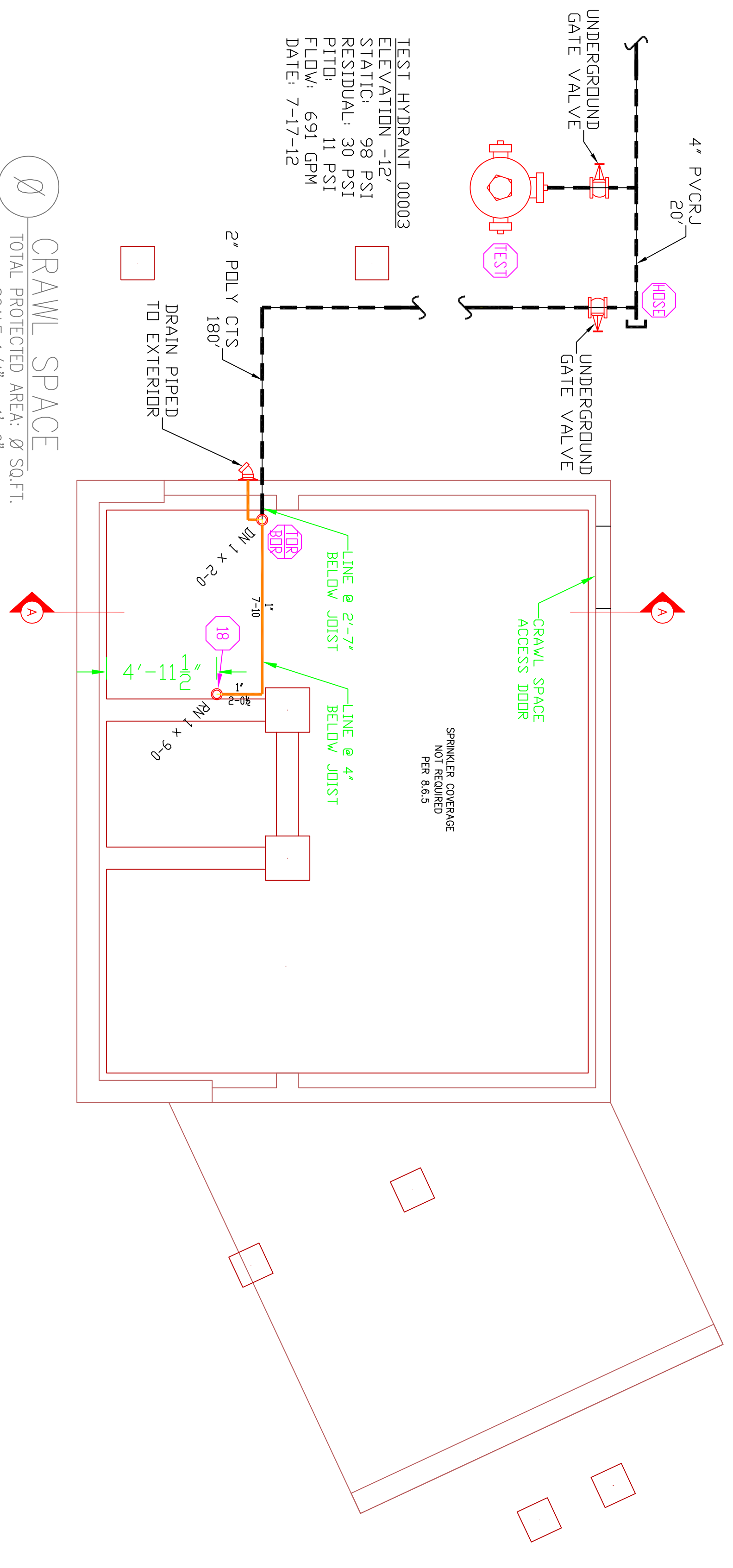
PIPE SIZE	3/4"	1"	1-1/4"	1-1/2"	2"	2-1/2"	3"
HANGER SPACING	5'-7/2"	6'	6'-7/2"	7'	8'	9'	10'



2 SECOND FLOOR  
TOTAL PROTECTED AREA: 800 SQ.FT.  
SCALE 1/4" = 1'-0"



1 FIRST FLOOR  
TOTAL PROTECTED AREA: 802 SQ.FT.  
SCALE 1/4" = 1'-0"



3 CRAWL SPACE  
TOTAL PROTECTED AREA: 0 SQ.FT.  
SCALE 1/4" = 1'-0"

PROJECT DESCRIPTION

**BUILDING CONSTRUCTION:**  
THE BUILDING IS 2 LEVELS, WITH CONDITIONED ATTIC & CRAWL SPACE OF WOOD FRAMING, FIBERGLASS INSULATION AND GYPSUM BOARD FINISHES. CPVC SPRINKLER PIPING AS SHOWN ON PLAN.

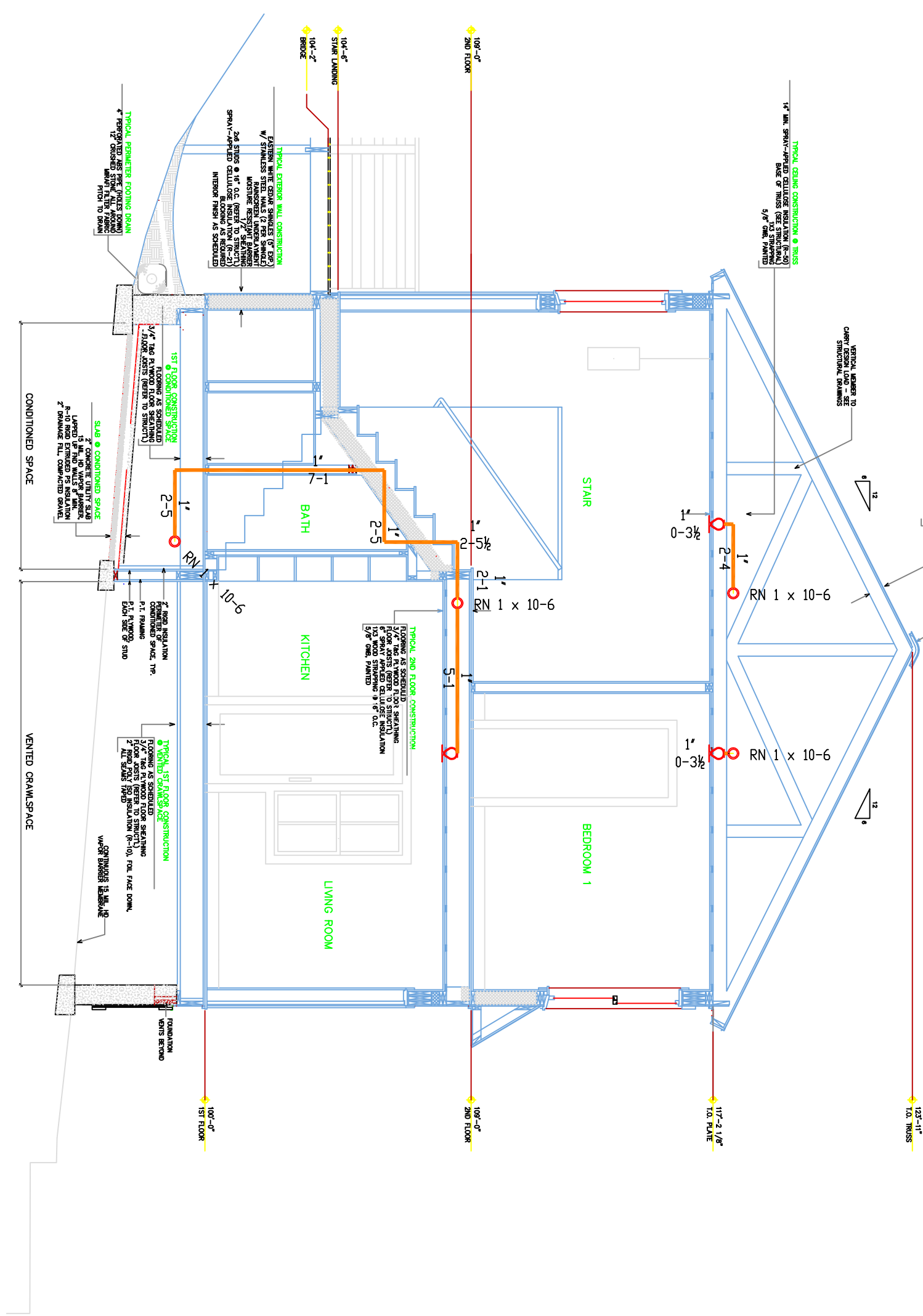
**BUILDING OCCUPANCY:**  
THE BUILDING WAS BUILT & DESIGNED FOR RESIDENTIAL LIVING USAGE, UNOCCUPIED ATTIC SPACE & UNOCCUPIED CRAWL SPACE.

**SPRINKLER SYSTEM DESIGN:**  
THERE IS A WET SYSTEM FOR THE LIVING UNIT IN ACCORDANCE WITH NFPA 13D 2010ed.

**RESIDENTIAL LIVING SPACE COVERED WITH RESIDENTIAL PENDENT SPRINKLER HEADS FED FROM CPVC PIPING ABOVE GC TO PROPERLY INSULATE AROUND SPRINKLER PIPING TO PREVENT WATER FILLED PIPE FROM FREEZING. THE SPRINKLER SYSTEM WAS DESIGNED TO MEET ALL APPLICABLE CODES REGARDING NFPA 13D 2010ed. SYSTEM.**



5 PLOT PLAN  
SCALE: N.T.S.



4 SECTION 'A'  
SCALE 1/4" = 1'-0"

SPRINKLER SYSTEM DESCRIPTIONS

1. 2" CTS POLY UNDERGROUND (BY OTHERS) 1'-0" ABOVE GRADE
2. 2" FORD POLY TO THREAD BRASS ADAPTER WITH 2" X 1" BRASS BUSHING
3. 1" BRASS NIPPLE
4. WATER PRESSURE GAUGES
5. 1" WILKINS 950 XLT BACKFLOW PREVENTER.
6. SHUT OFF VALVES
7. STEEL TO CPVC ADAPTER TO SPRINKLER SYSTEM
8. 1" DRAIN VALVE
9. 1" DRAIN DISCHARGE TO EXTERIOR GRADE
10. PIPE STAND

3 RISER DETAIL  
SCALE: N.T.S.

HIGH TECH  
FIRE PROTECTION

P.O. BOX 156  
MILFORD, ME 04258-0156  
TEL: (207) 998-2581 FAX: (207) 998-4187  
NAME LICENSE # 102  
GENERAL CONTRACTOR ON RECORD:  
THAYER COMPANY 878-5553  
THAYER THAYER 653-5346  
JASON 508-566-4307

SPECIAL APPLICATIONS:

- MINOR PIPE RISER UP OR DOWN
- PROPOSED PIPE
- SYSTEM RISER
- PIPE FROM MAINS TO MAINS
- SWAY BRACING
- HYDRAULIC CALC. POINT

DESIGN & SYSTEM NOTES:

WITH APPROVED EQUALS. ALL PIPING TO BE SCHEDULE 40 WITH APPROPRIATE FINISHING AND USE OF SPRINKLER HEADS SHALL BE IN ACCORDANCE WITH NFPA 13D. POSITION, LOCATION, SPACING, AND USE OF HANGERS SHALL BE IN ACCORDANCE WITH NFPA 13D. FIELD CUTTING OF RISER SHALL BE IN ACCORDANCE WITH NFPA 13D. DIMENSIONS AND LOCATIONS GIVEN FOR SPRINKLER ACTUAL FIELD CONDITIONS. OWNER TO PROVIDE ABSOLUTE HEAT THROUGHOUT BUILDING TO PROTECT WATER FILLED PIPING AND EQUIPMENT FROM FREEZING TEMPERATURES. OWNER IS RESPONSIBLE TO MAINTAIN THE SPRINKLER SYSTEM IN ACCORDANCE WITH NFPA 13D. THE DESIGNER IS NOT RESPONSIBLE FOR THE MAINTENANCE OF WATER-BASED FIRE PROTECTION SYSTEMS AND/ OR LINES, ORES AND BRANCHINGS, AND/OR LOCAL TRADES TO COORDINATE THEIR WORK WITH SPRINKLER CONTRACTOR. ALL ELECTRICAL, ELECTRONIC AND PLUMBING TRADES TO COORDINATE THEIR WORK WITH SPRINKLER CONTRACTOR. ALL ELECTRICAL WORK IS TO BE DONE BY OTHERS.

- RELIABLE®  
MODEL RFC49  
19 7/16" K=4.9  
1/2" WHITE CONCEALED PENDENT  
16" X 16" SPACING

408 APPROVED EQUALS

TOTAL HEADS ON THIS SHEET: 19

SCALE: 1/4" = 1'-0"

REVISIONS:

NO.	DATE:	DESCRIPTION:
1	MARCH 12, 2017	DESIGNER: ED BOULIN (RMS# 515)
2	CHECKED BY: AL COSS	

DATE: MARCH 12, 2017  
DESIGNER: ED BOULIN (RMS# 515)  
CHECKED BY: AL COSS

LOCATION:  
66 SHORE ROAD  
CUSHING ISLAND, ME

DRAWING TITLE:  
ANHOLT-WHITE  
COTTAGE

FIRE PROTECTION PLAN  
(NFPA 13D 2010ed.)

DRAWING NO.: FP-01