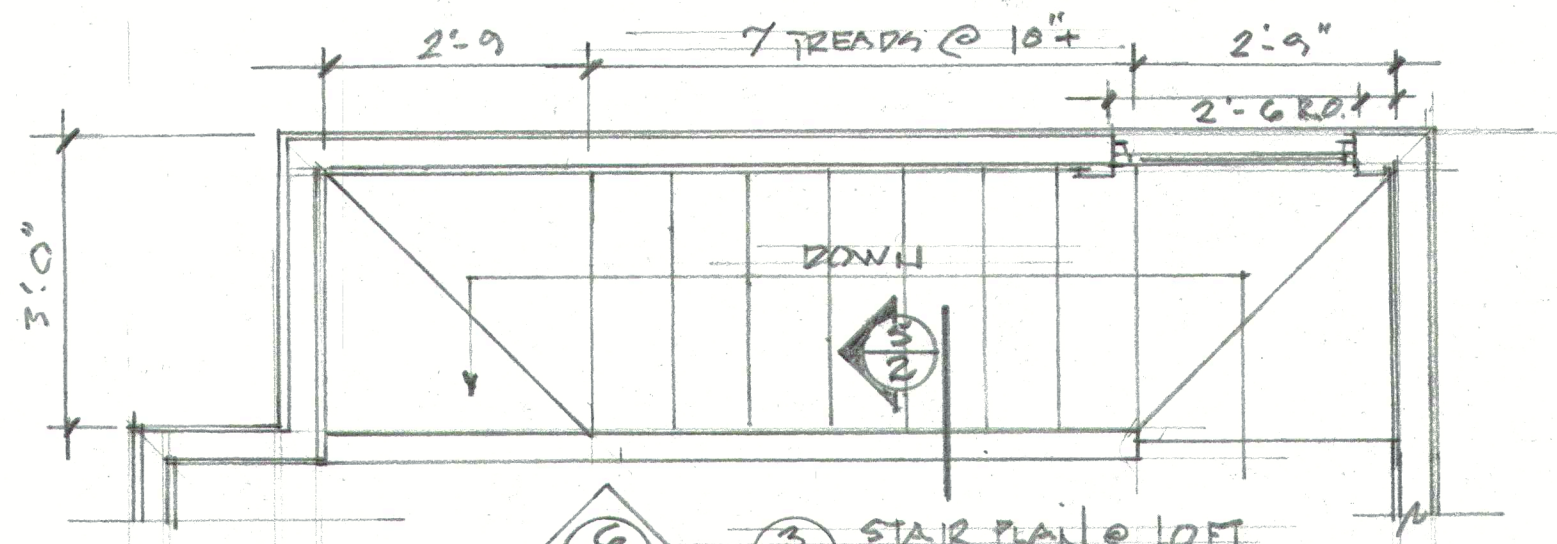


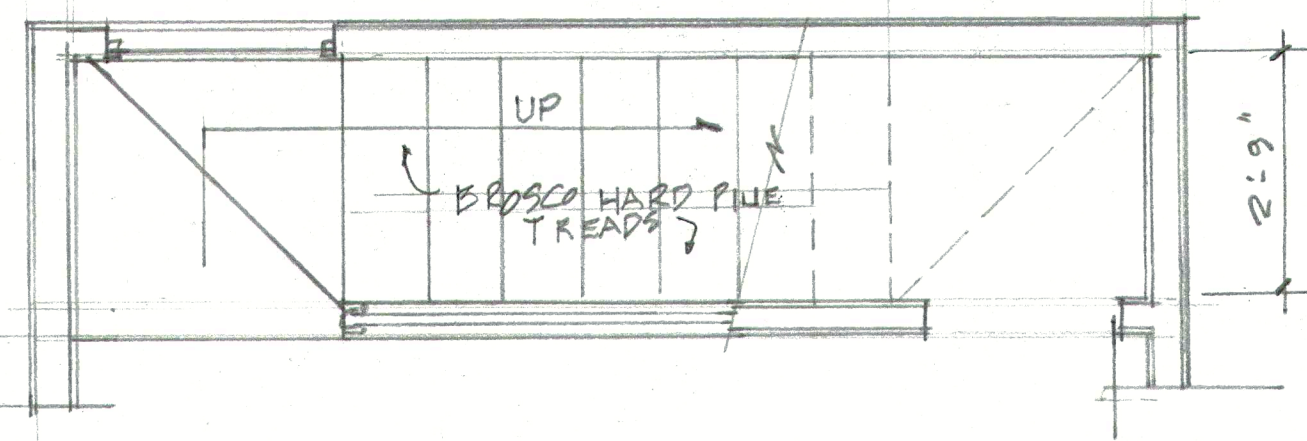
④ EAST ELEVATION OF RAILING AT LOFT
2 1/2" = 1'-0"

⑤ SECTION
2 1/2" = 1'-0"

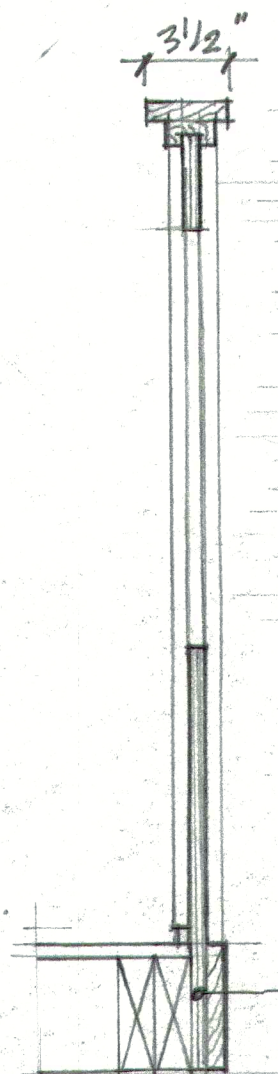
④ PLAN SECTION
2 1/2" = 1'-0"



③ STAIR PLAN @ LOFT
2 1/2" = 1'-0"



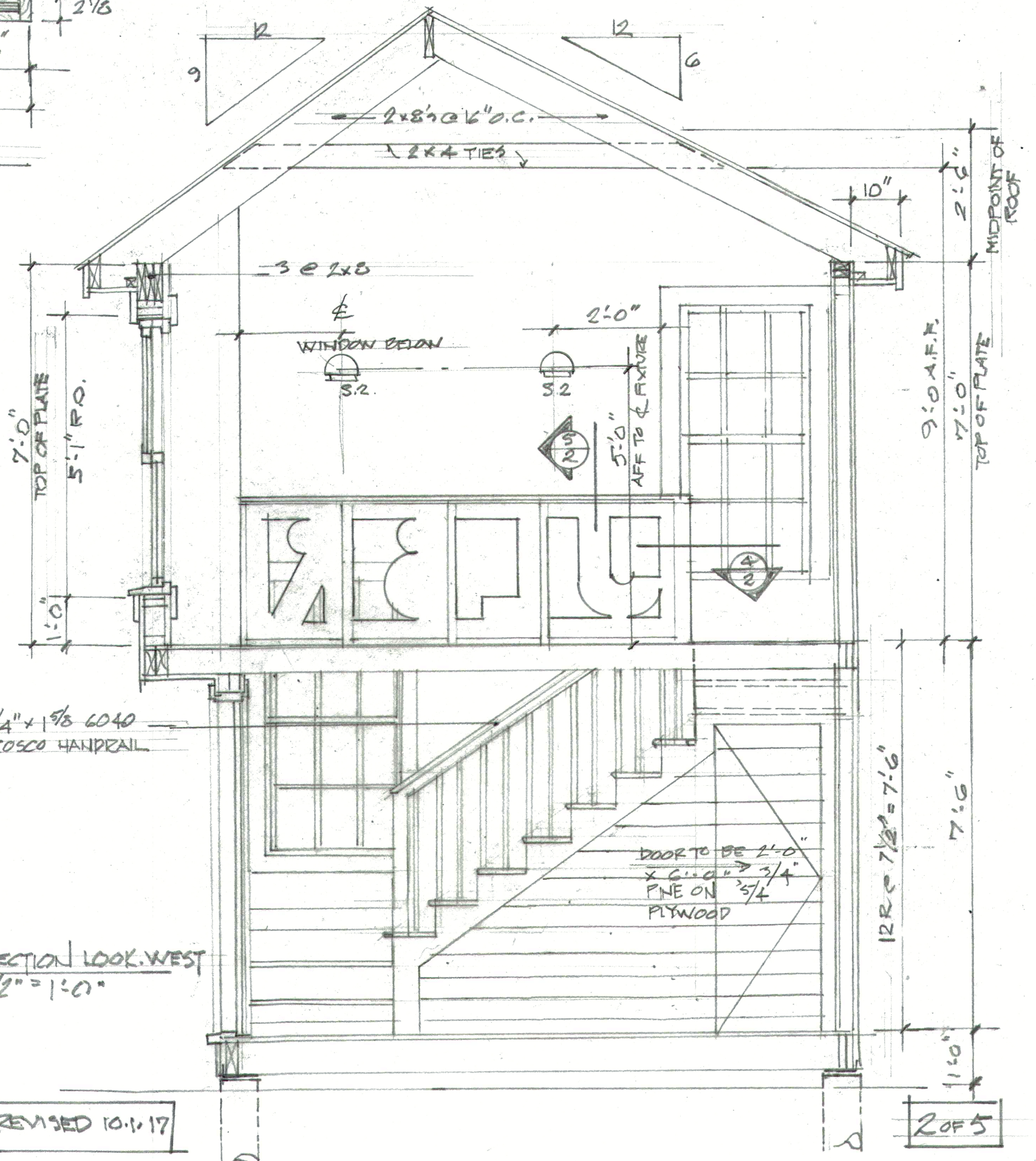
② STAIR PLAN @ FLOOR
2 1/2" = 1'-0"



NOTES

1. HANDRAIL PANELS TO BE 3/4" FINISH PLYWOOD, BOTH SIDES, FOR PAINTING
2. TRIM STOCK TO BE 3/4" x 4" FLAT FOR PAINTING

PLYWOOD PANELS FASTENED TO 2x8'S



① SECTION LOOK WEST
2 1/2" = 1'-0"