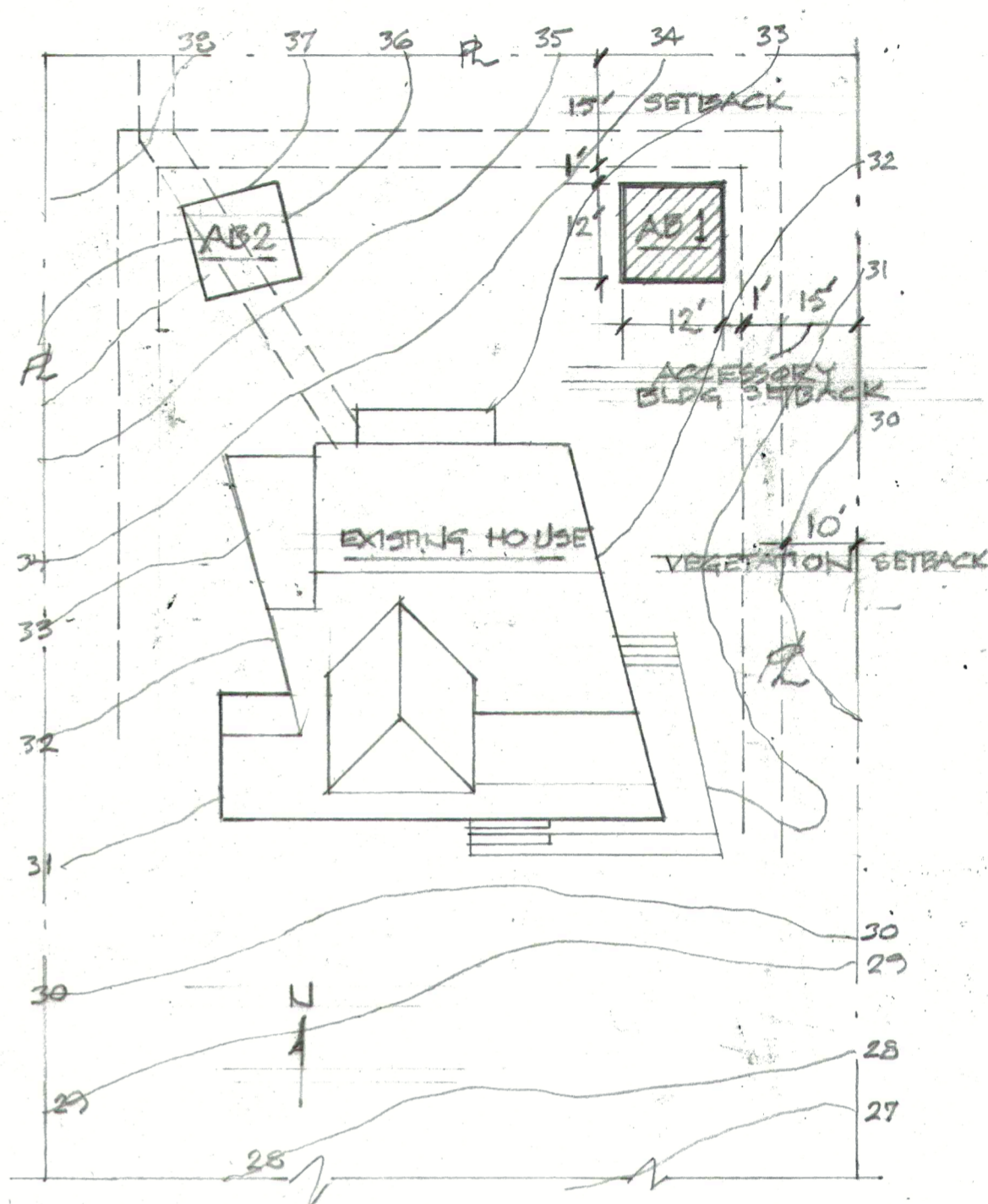
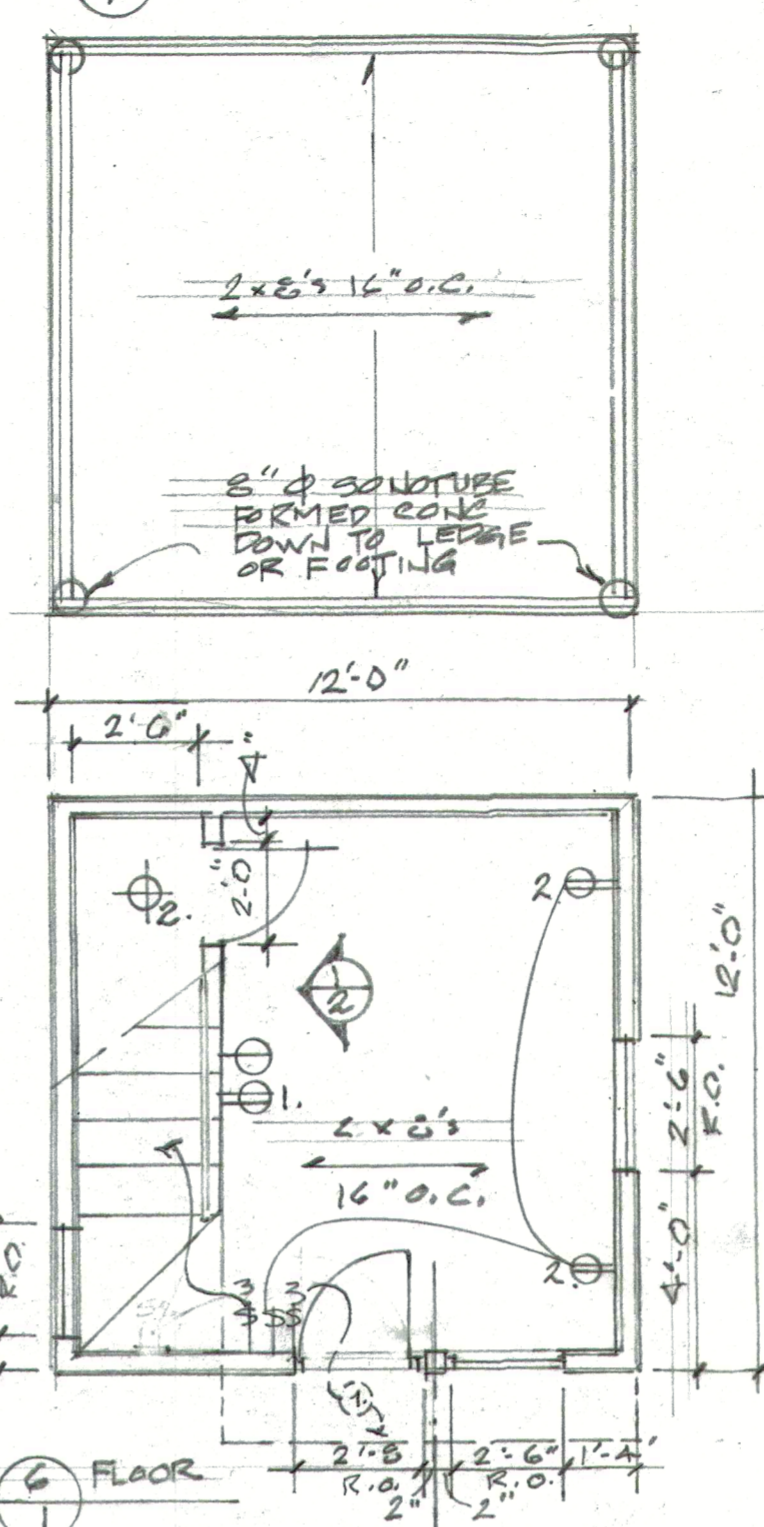
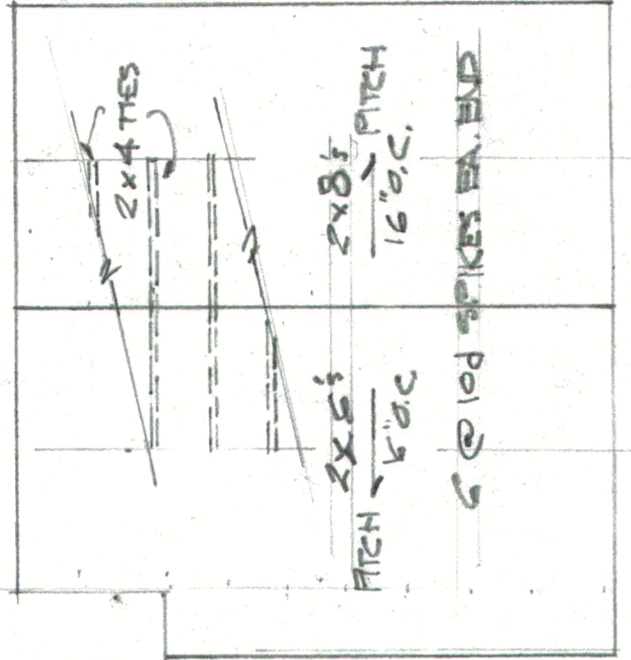


2 FLOOR FRAMING

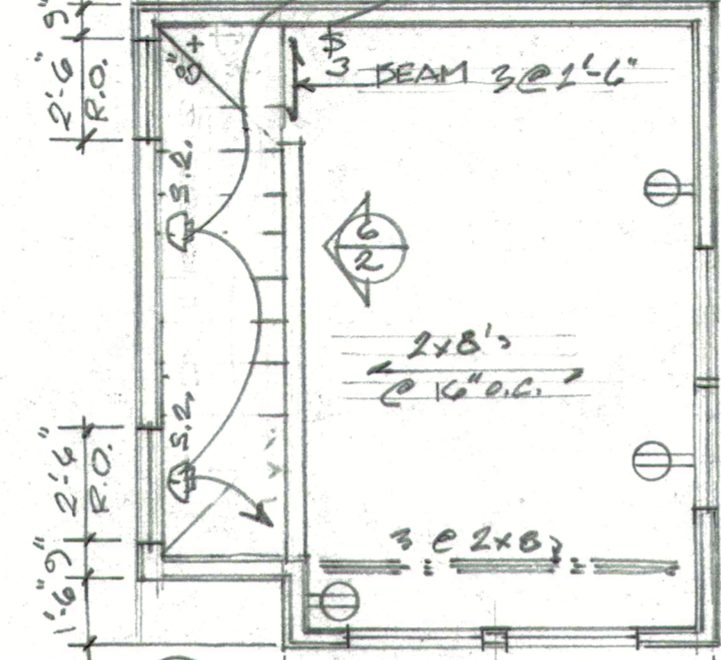


1 SITE PLAN  
1" = 20'-0"

PROVIDE #10 x 3 1/2" SCREWS UP THROUGH TOP PLATE INTO BOTTOM OF RAFTERS, 2" EMBEDDED INTO RAFTERS.

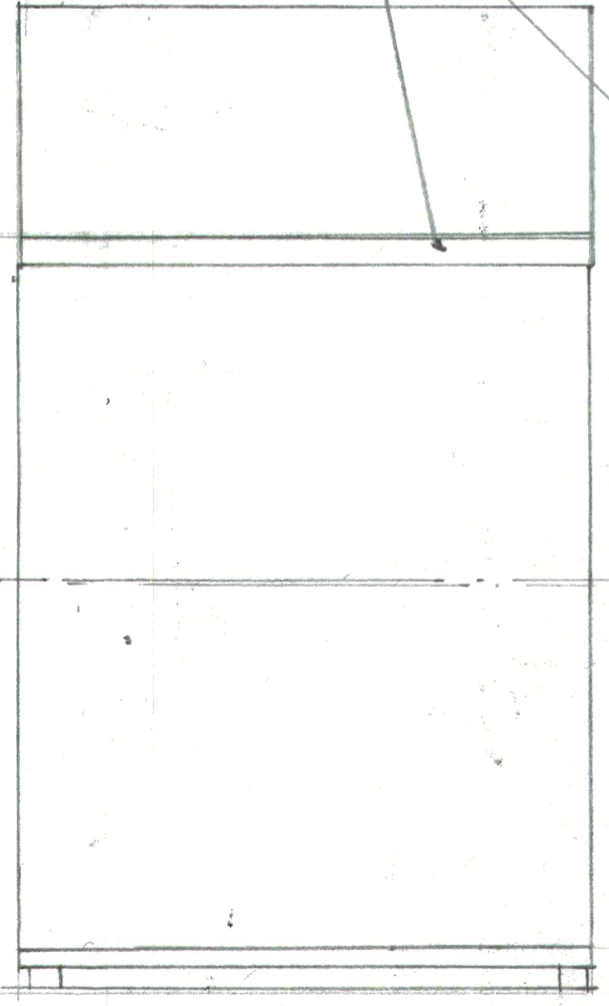


8 ROOF

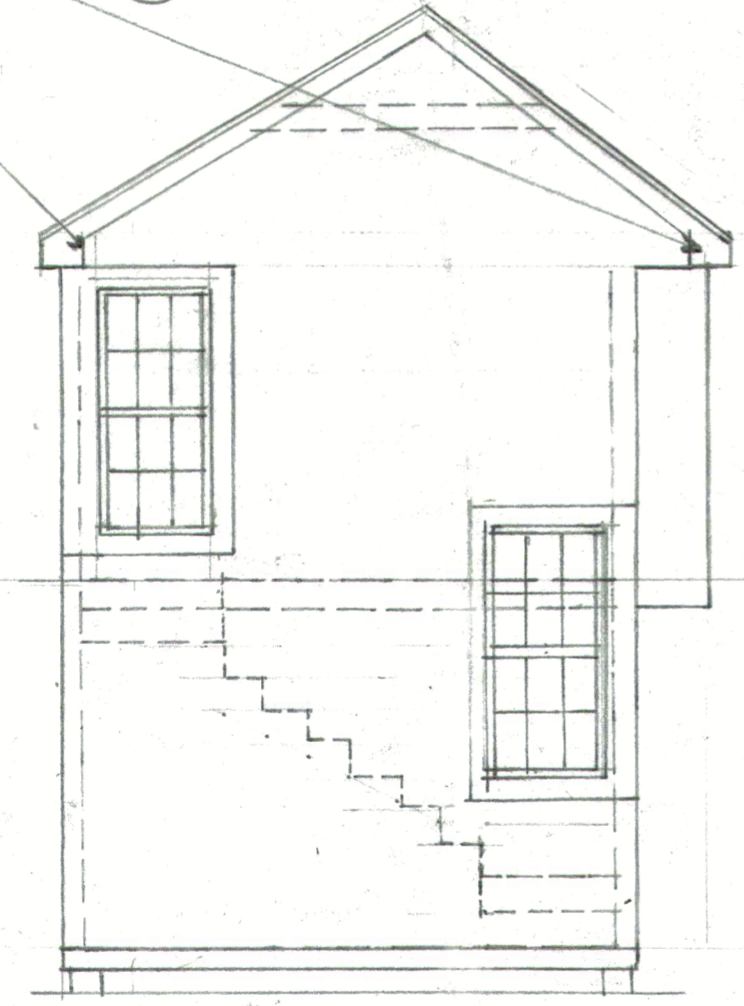


7 LOFT

6 FLOOR



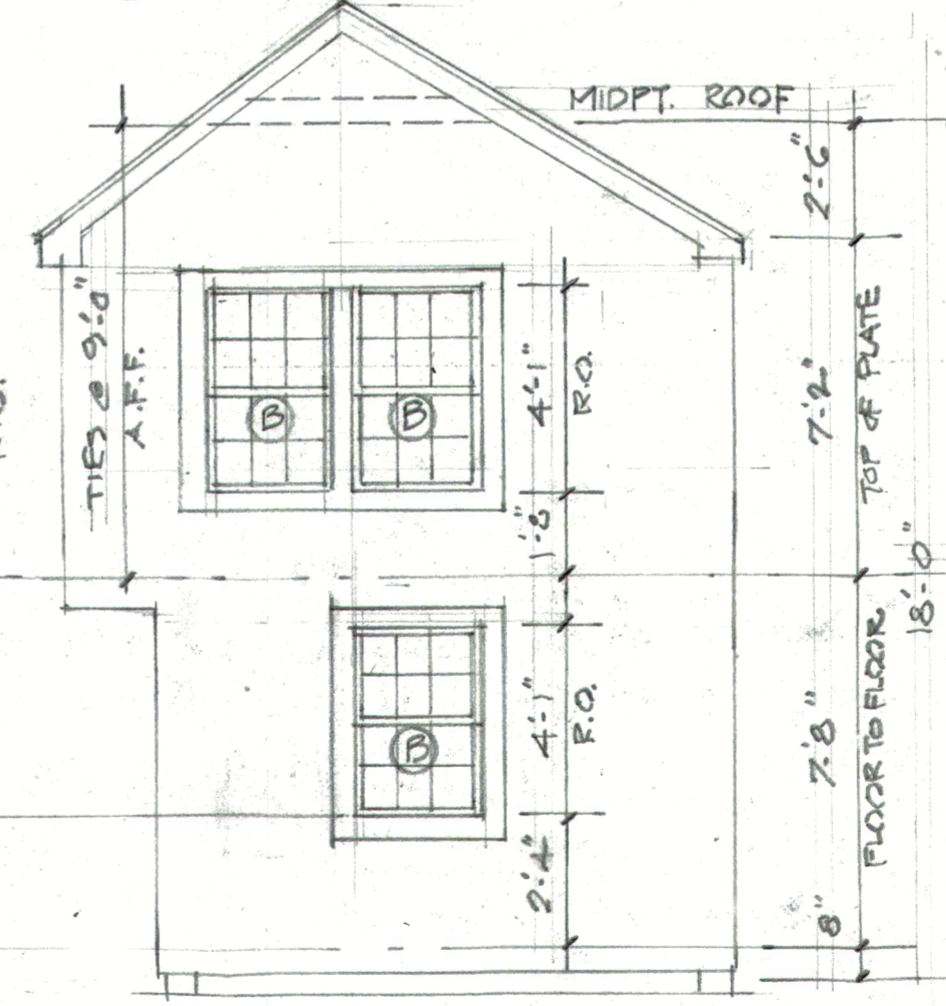
5 NORTH ELEV.



4 WEST ELEV.



3 SOUTH ELEV.



2 EAST ELEVATION

NOTES:

- 1. WINDOWS: BROSCO AUTH. DIV. LIGHTS DOUBLE HUNG 6/6 (5/13)
- 2. DOOR: BROSCO F944 2'-0" x 6'-8"
- 3. BLDG FOOTPRINT 12' x 12' = 144 sq ft  
AVG. BLDG HEIGHT = 18'-0"
- 4. LIGHT & POWER
  - (1) RECESSED DOWNLIGHT SWITCH TO HOUSE
  - (2) CIG. MTD. CLOSET LIGHT WITH PULLCHAIN
  - CABLE POWER 3'-0" AFF
  - 1 DUPLEX 3'-0" AFF
  - 2 DUPLEX 1 SIDE HOT, 1 SIDE SWITCHED
  - DUPLEX
  - SOURCE (2 REED)