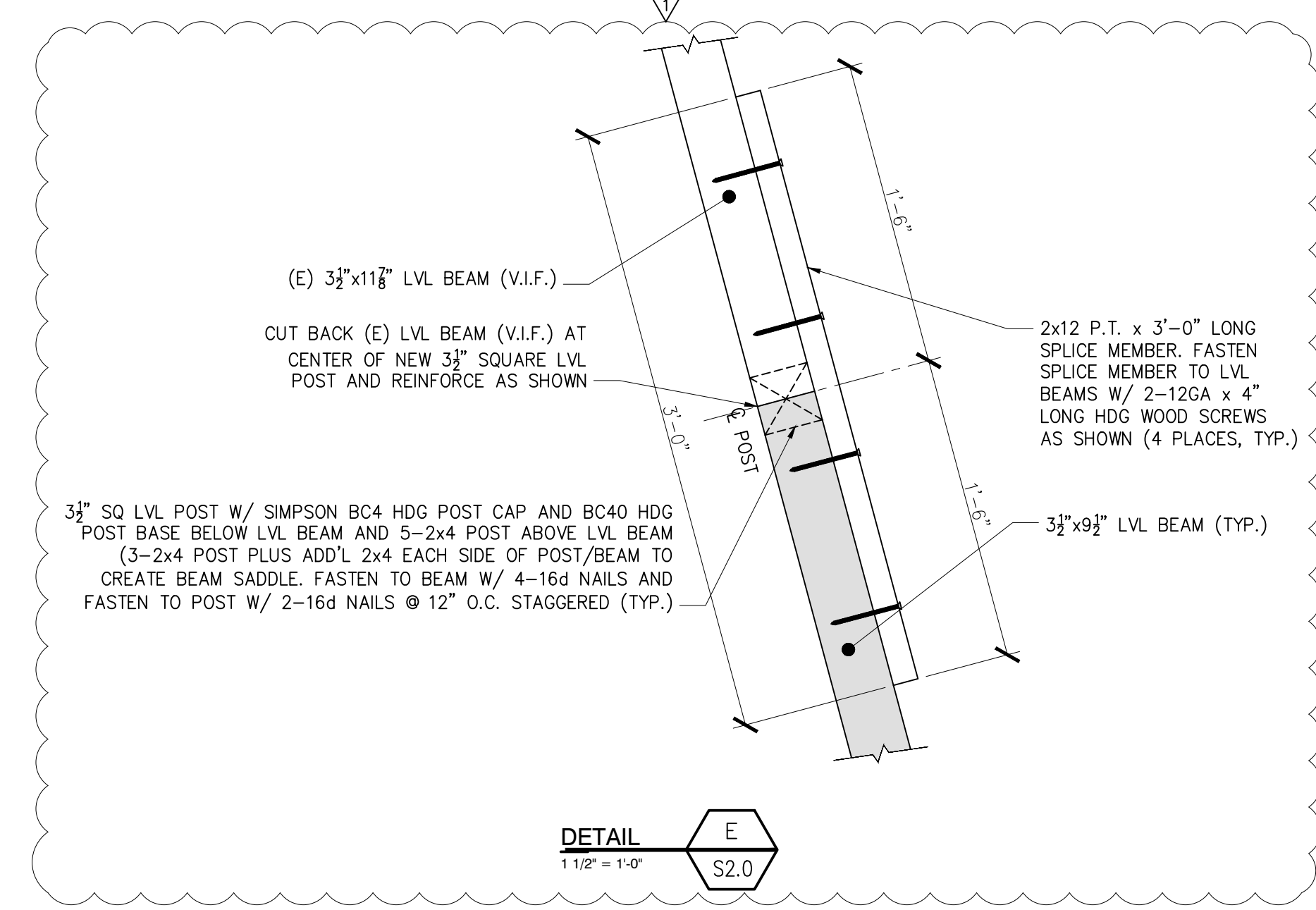
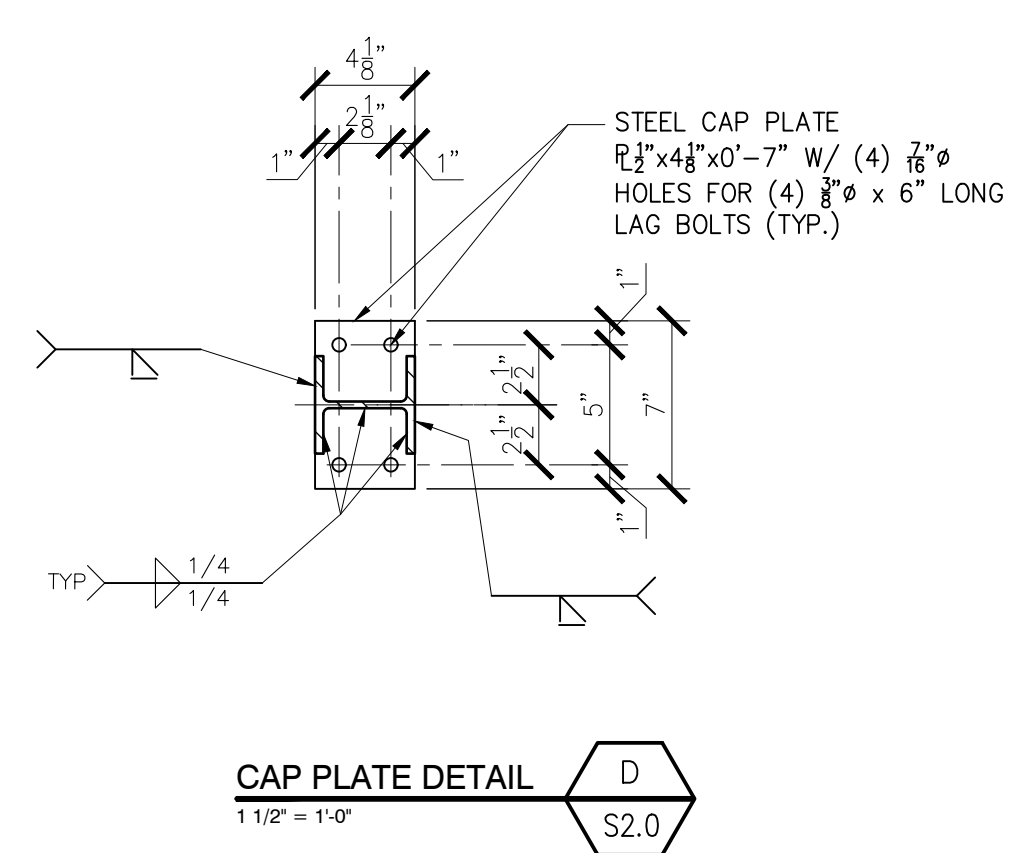
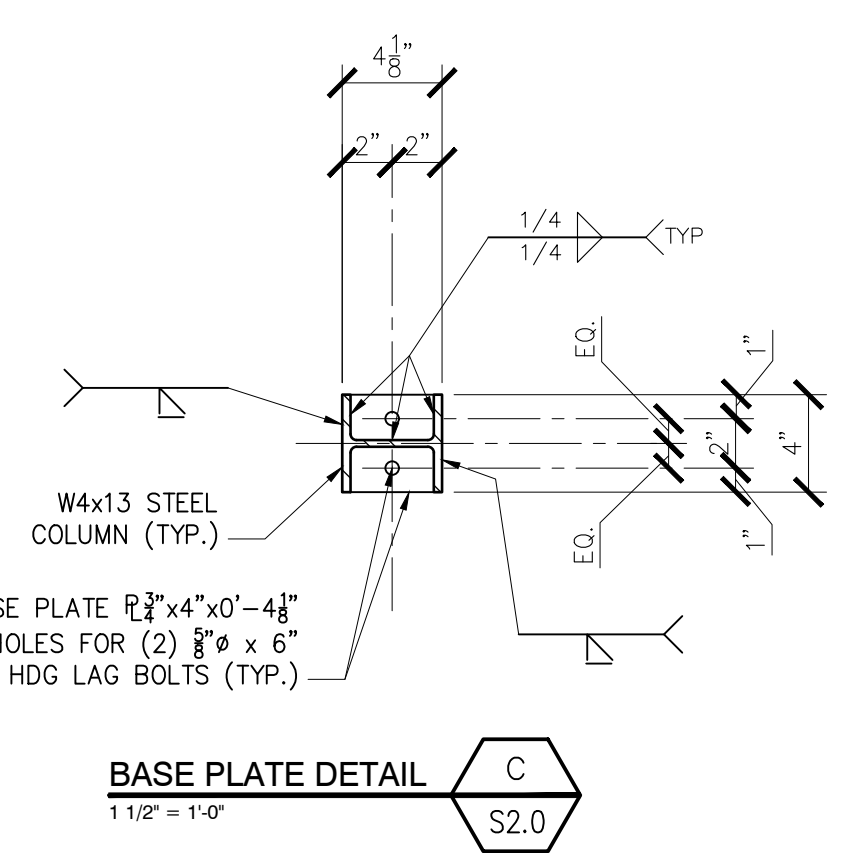
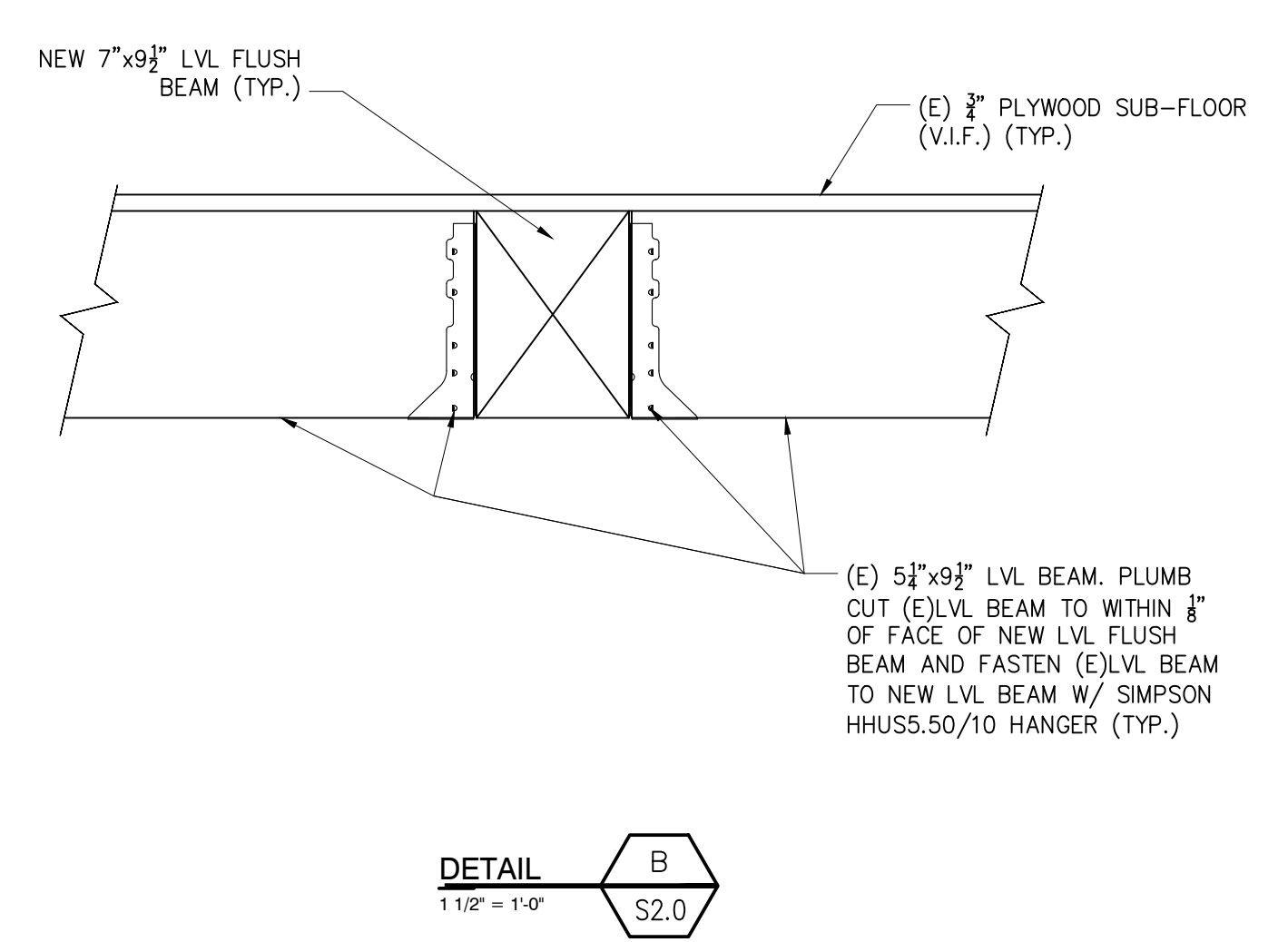
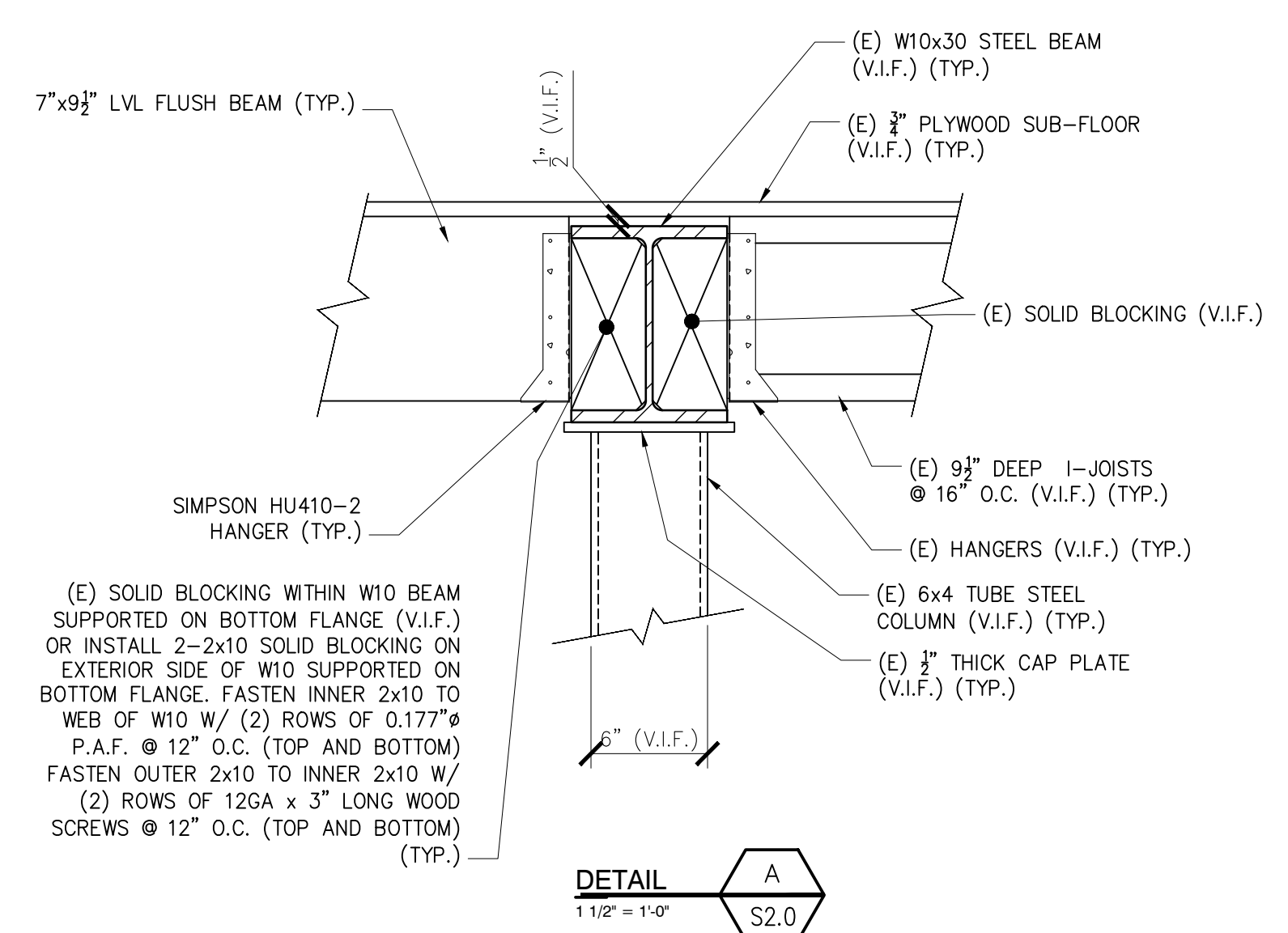
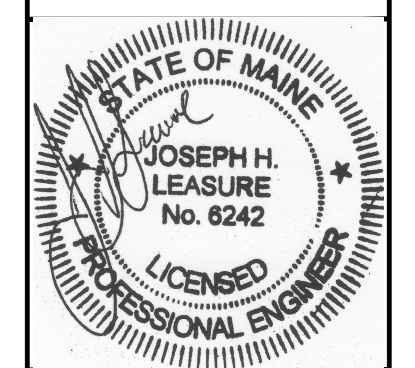


SECTION 1
1 1/2" = 1'-0"
S2.0
S1.1
S1.2



L & L STRUCTURAL ENGINEERING SERVICES, INC.
SIX Q. STREET SOUTH PORTLAND, MAINE 04106
PHONE: (207) 767-4830
FAX: (207) 799-5432
EMAIL: JLEASURE@L-L-ENG.COM



designed by: JHL	checked by: JHL	date	description	rev.	date
JHL	JHL	04/12/17	FOR PERMIT & COORD.	A	
JHL	JHL	06/30/17	FOR CONSTRUCTION	0	
JHL	JHL	11/02/17	GENERAL REVISIONS	1	
JHL	JHL	04/12/2017			
		11/02/2017			
					project # 2015-150

KLAUBER-SPIDEN RESIDENCE
SHORE ROAD
CUSHINGS ISLAND, PORTLAND MAINE
STRUCTURAL RENOVATIONS AND ADDITIONS
SECTIONS AND DETAILS

S2.0

THESE DRAWINGS HAVE BEEN DEVELOPED BY L&L STRUCTURAL ENGINEERING SERVICES, INC. FOR THE TITLED SET ONLY. THE DRAWINGS ARE THE SOLE PROPERTY OF L&L ENGINEERING SERVICES, INC. AND THEY SHALL NOT BE USED, LENT, COPIED OR ALTERED WITHOUT THE WRITTEN CONSENT OF L&L STRUCTURAL ENGINEERING SERVICES, INC.