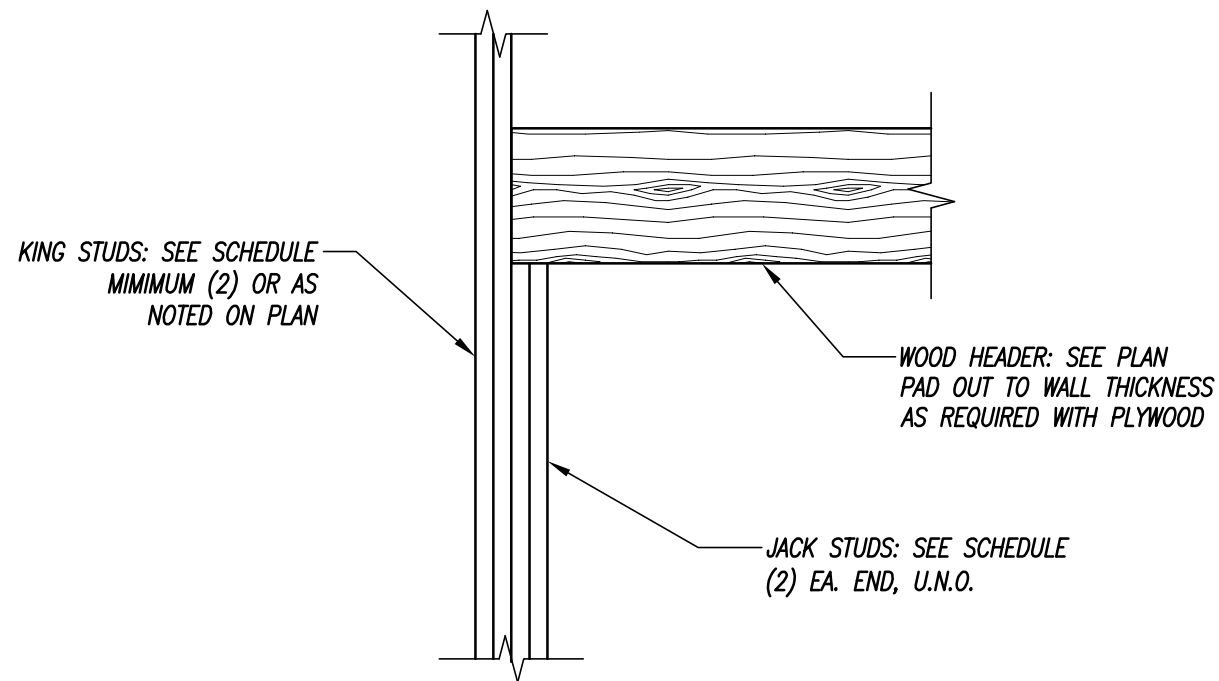


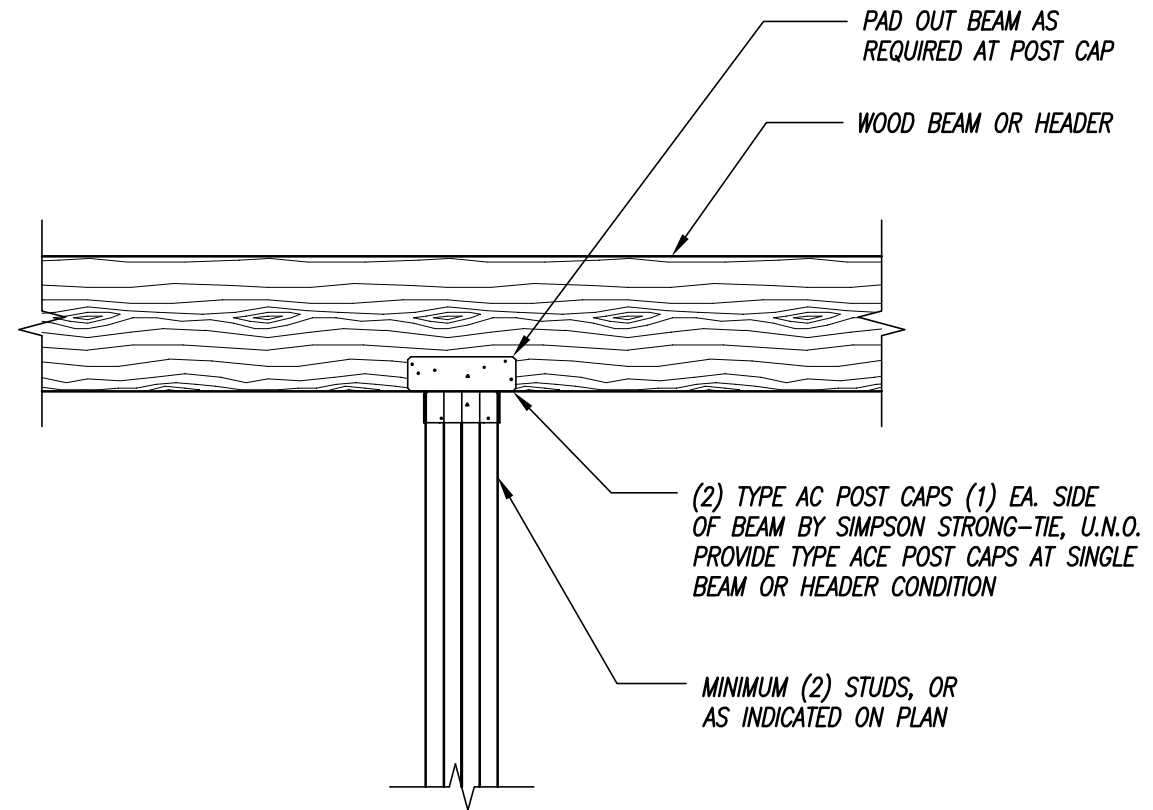
BEAM BEARING PERPENDICULAR TO WALL

3/4" = 1'-0"



TYPICAL BEAM/HEADER DETAIL

3/4" = 1'-0"



TYPICAL BEAM TO WOOD COLUMN DETAIL

3/4" = 1'-0"



ISSUED FOR PERMIT
APRIL 8, 2015